

Accessing Standard Edition Web Interface

With CDP properly installed, you can access the administration Interface by opening a Web browser and typing in the Host Name or IP address of the CDP Server.

[Accessing CDP from Local Machine](#) | [Accessing CDP from Internet/LAN](#) | [Using Secure Connection](#) | [Logging In CDP Server](#)

Accessing CDP from Local Machine

You can connect to the CDP Server Web Interface from the computer where it is installed (type "localhost") or from any computer connected to the Internet/in your LAN.



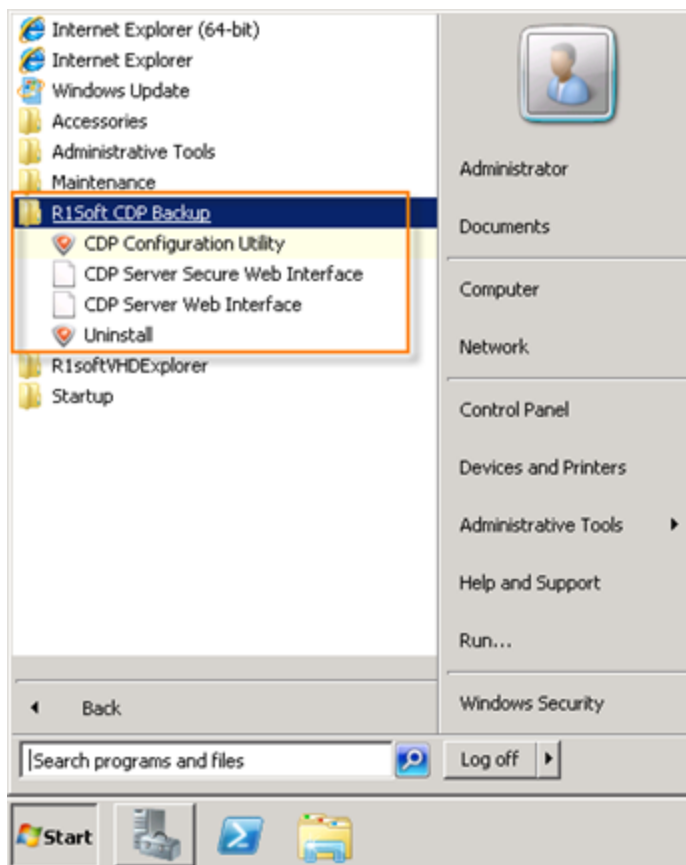
You can also access the CDP Server Web Interface from the Start Menu.

For example, Start > Programs/All Programs > R1Soft CDP Backup > CDP Server Secure Web Interface or CDP Server Web Interface.



Notice

The Start menu folder can be different if the User has chosen another name during the CDP installation.



Accessing CDP from Internet/LAN

To connect to the CDP Server Web Interface from any computer connected to Internet/LAN, follow the instructions below.

In the address bar of the browser, type the IP address (Host Name) of the CDP Server. Typically, it is same as the IP address of the computer. Example:

`http://178.120.122.126`

Tip

In Windows, you can find out the IP address of the computer by following these instructions. Click "Start," select "Run" (in some versions), type "cmd," type "ipconfig," and press <Enter>. IP address of your PC will be displayed among the other configuration parameters.

**Tip**

In Linux, type the "ifconfig" command to find out the IP address of the machine.

Using Secure Connection

CDP Server Secure Web Interface uses encrypted (SSL) HTTPS connections.



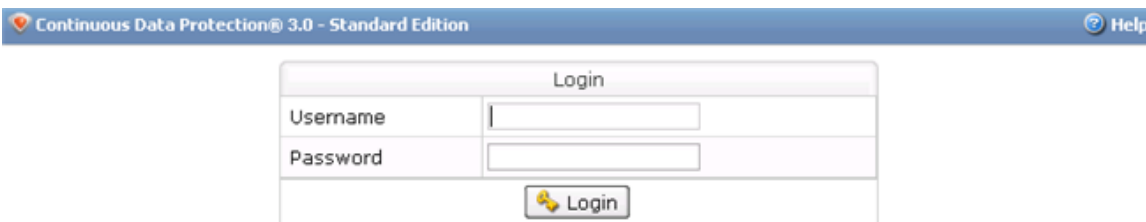
CDP Server Web Interface uses HTTP protocol.

**Note**

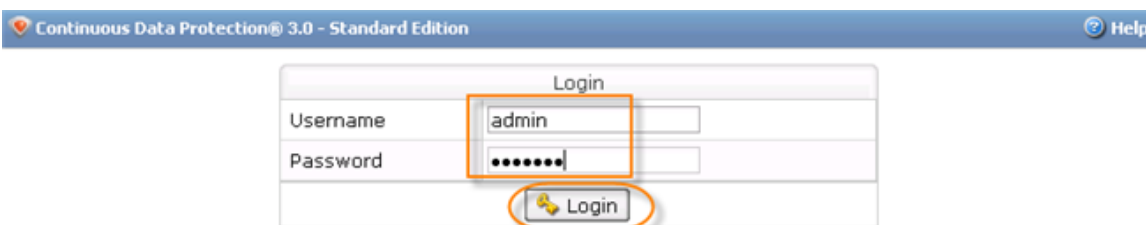
By default, HTTP and SSL are enabled. You can configure these settings in [Configuration > Web Server Options](#). See [Configuring Web Server Options](#).

Logging In CDP Server

Once you have established a connection to the CDP Server, you will be prompted for a Username and Password.



Type in "admin" as the Username and type in the Password you specified during installation. Click on "Login."



Proceed to the next step: [Activating CDP Standard Edition](#).