

Monitoring Disk Safes in Data Center Console

CDP Data Center Console allows you to monitor parameters of Disk Safes on multiple CDP Servers at once. You can do so from the "Disk Safes" screen.

Follow the instructions below to access the "Disk Safes" screen.

1. Select "Disk Safes" from the Main Menu.



You will enter the "Disk Safes" screen.

Enabled	CDP Server	Agent	Volume	Name	Path				All Devices	Actions
●	10.230.4.20	120 - USS Enterpris	vol20	10.230.4.120	/mnt/hda1/vol20/eb1	3215	2	43.6 f		QuickLZ
●	10.230.4.22	122 - USS Excalibur	vol22	10.230.4.122	/mnt/hda1/vol22/0d1	3243	2	38.6 f	✓	QuickLZ
●	10.230.4.23	123 - USS Exeter	vol23	10.230.4.123	/mnt/hda1/vol23/0f3	3194	2	38.5 f	✓	QuickLZ

1 / 11 Items Per Page

Disk Safe Details for '10.230.4.120'

Identification	
State	Disk Safe Open
Name	10.230.4.120
CDP Server	10.230.4.20
Path	/mnt/hda1/vol20/eb1c8aab-944c-40a2-acc9-4d337b394eb5
Agent	120 - USS Enterprise
Volume	vol20
GUID	eb1c8aab-944c-40a2-acc9-4d337b394eb5

Statistics	
Devices	2
Recovery Points	3215
On Disk Size	43.6 MB
Deltas	67.2 MB (70510000)

The "Disk Safes" List | Details Pane

The "Disk Safes" List

The list of all Disk Safes is displayed with the following columns:

- Enabled - Graphically indicates the Disk Safe state. If the icon is green, then the Disk Safe is opened. The red icon is used for closed Disk Safes.
- CDP Server - The name of the CDP Server to which the current Disk Safe belongs.

Note
The server name displays in the form of a link. You can click the link for quick access to the CDP Server.

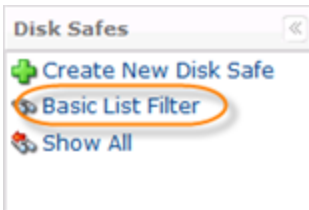
Enabled	CDP Server	Agent	Volume	Name	Path		
	Houston DC	122 ubuntu 11.04 /	linux_vol	linux_ds	/home/r1soft/linux_v	324	2
	Houston DC	122 ubuntu 11.04 /	linux_vol	t3st	/home/r1soft/linux_v	1	2

- Agent - Displays the name of the Agent to which the Disk Safe is assigned.
- Volume - Displays the name of the Volume to which the Disk Safe is assigned.
- Name - Displays the name of the Disk Safe.
- Path - This column displays the path to the folder where the Disk Safe is physically located.
- Recovery Points - Displays the number of Recovery Points in the Disk Safe.
- Devices - Displays the number of Devices assigned to the Disk Safe.
- On Disk Size - Displays the disk space occupied by the Disk Safe.
- All Devices - Indicates if all Host's Devices are assigned to the Disk Safe. If the "All Devices" option was selected for the Disk Safe, then there is a green icon in this column. Otherwise, there will be no icon.
- Compression - Displays the compression level set for the Disk Safe. Possible values: "ZLib Low," "ZLib Medium," "ZLib High," "NONE."
- Actions - The following actions are available (see [Editing Disk Safes](#) for detailed description):
 - Edit
 - Stop
 - Close
 - Remove
 - Delete

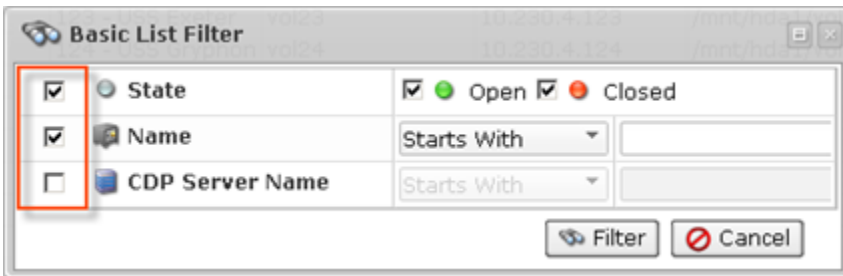
This column also contains the icon. Clicking this icon will allow you to "drill down" to the specified CDP's "Disk Safes" screen.

Filtering the "Disk Safes" List

You can use a Basic List Filter to sort the "Disk Safes" list. Click on the "Basic List Filter" button to access the filtering options.



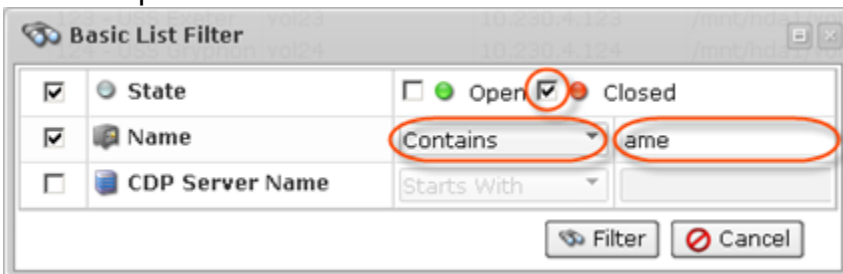
1. Select the necessary options to filter.



- State- Allows you to sort by the Disk Safe state (opened or closed).
- Name - Allows you to sort by the Disk Safe name.
- CDP Server Name - Allows you to sort by CDP Server name.

2. Select the type of search from the drop-down menu (Starts With/Contains/Ends With) and enter the Name//Server name to the field. Select whether to display "Opened" or "Closed" Disk Safes.

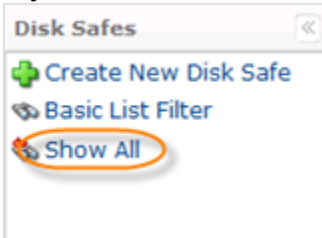
For example:



3. Click on the "Filter" button.



If you want to discard filtering options and view the whole list, click "Show all."



Details Pane

Click on a Disk Safe in the list to see its details in the "Details" pane. This pane provides more detailed information about the Disk Safe selected in the list. The pane has three sections:

- Identification
- Statistics
- Compression

Most of the information presented in these sections is the same as the data shown in the Disk Safes list columns (See above). Extra information is following:

- GUID - Globally Unique Identifier generated by the system.
- Deltas - The value in bytes. Deltas are the data that has changed since the last backup run.
- Pages
- Free Pages

Disk Safe Details for 'linux_ds'

Identification

State	Disk Safe Open
Name	linux_ds
CDP Server	Houston DC
Path	/home/r1soft/linux_vol/231ae027-bd96-4474-a25a-288d5248f0a7
Agent	122 ubuntu 11.04 Agent
Volume	linux_vol
GUID	231ae027-bd96-4474-a25a-288d5248f0a7

Statistics

Devices	2
Recovery Points	108
On Disk Size	975.3 MB
Deltas	1.7 GB (1795344558)
Pages	30831 (963.5 MB)
Free Pages	1706 (53.3 MB)

Compression

Compression Type	QuickLZ
------------------	---------

- If you click on the icon near the CDP Server name, you will access the server details window.

CDP Details for 'Houston DC'

Details

Identification

Name	Houston DC
Description	Houston DC
Status	CDP server is online
Enable	Enabled


Server Details

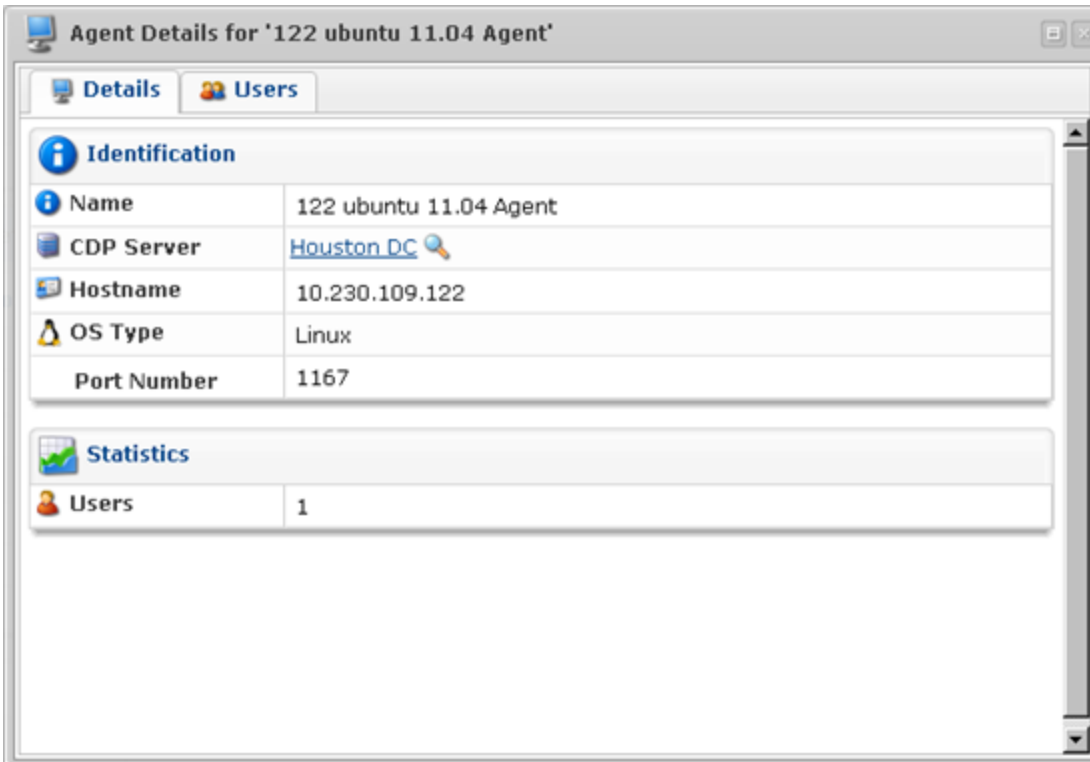
OS Type	Linux
Product Type	Enterprise Edition
Product Version	3.12.0 build 14298
License Validity	License is valid

Connection Settings

Hostname	10.230.109.121
API HTTP Port	9080
API SSL Port	9443
COM SSL Port	5443
UI HTTP Port	80
UI SSL Port	443

For more information about server details, see [Accessing CDP Servers in Data Center Console](#).

- If you click on the  icon near the Agent name, you will access the Agents Details window.



For more information about Agent details, see [Monitoring Agents in Data Center Console](#).

- If you click on the 🔍 icon near the Volume name, you will access the Volumes details window.

Volume Details for 'linux_vol'

Details | **Groups** | **Users**

Identification

Name	linux_vol
Description	all linux volumes
CDP Server	Houston DC
Status	Volume is OK!

Quotas

Quota Type	No Quota
------------	----------

Statistics

On Disk Size	1.3 GB
Deltas	2.4 GB (1,481,535)
Groups	0
Users	2

For more information about Volume details, see [Monitoring Volumes in Data Center Console](#).