

Attaching VHDs

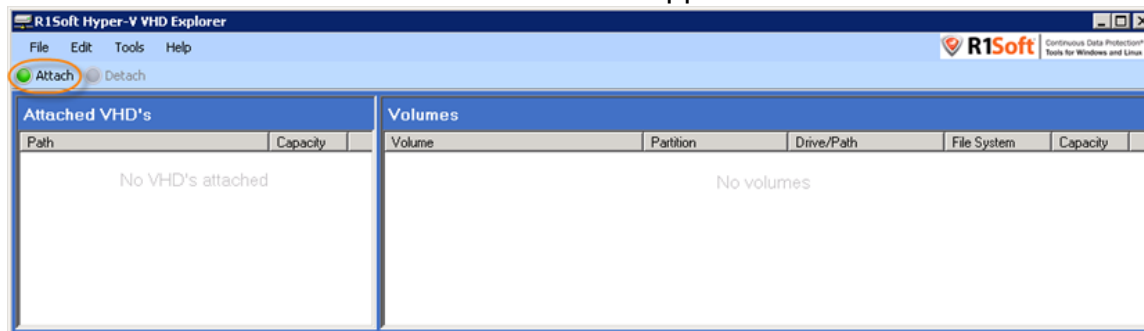
Attaching VHDs

Attaching VHD means making it available for use. You can attach a new VHD you have just created or another existing VHD.

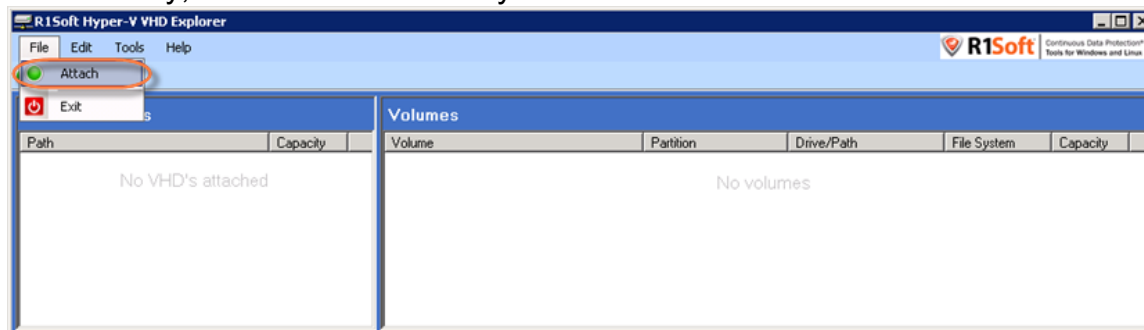
To attach a VHD, follow the instructions below.

Attaching VHD Using R1Soft Hyper-V VHD Explorer

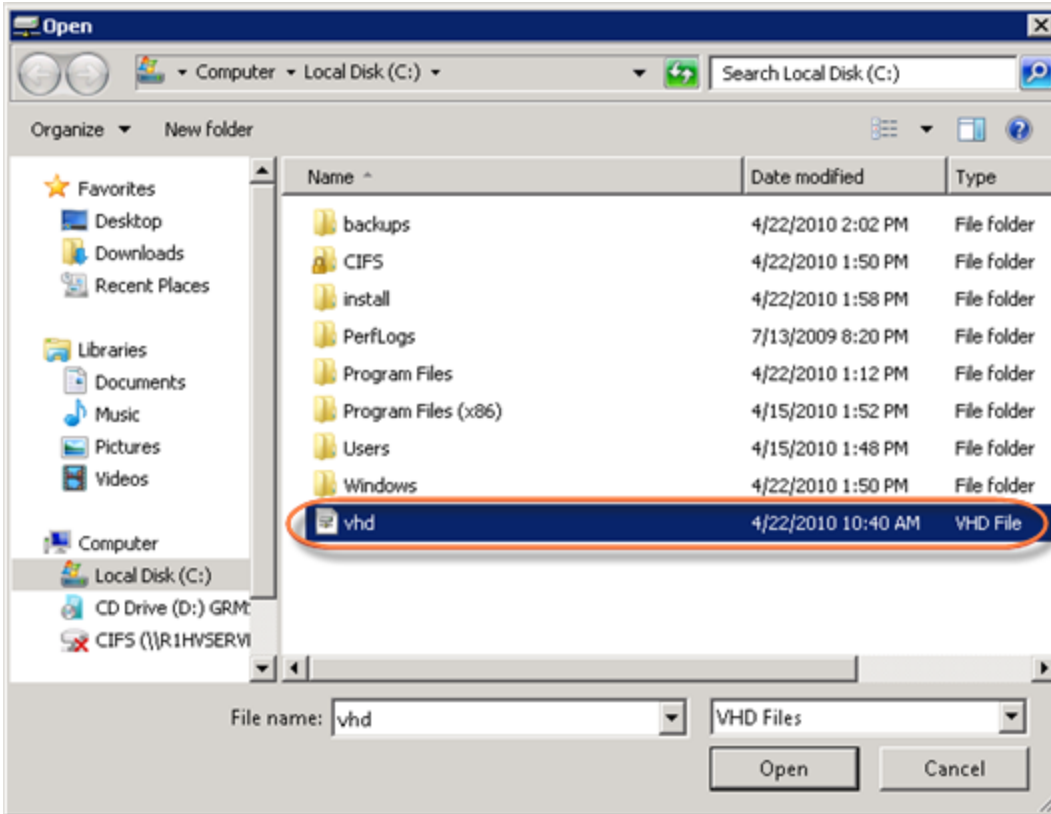
1. Launch the R1Soft Hyper-V VHD Explorer.
2. Click on the "Attach" button located on the application toolbar.



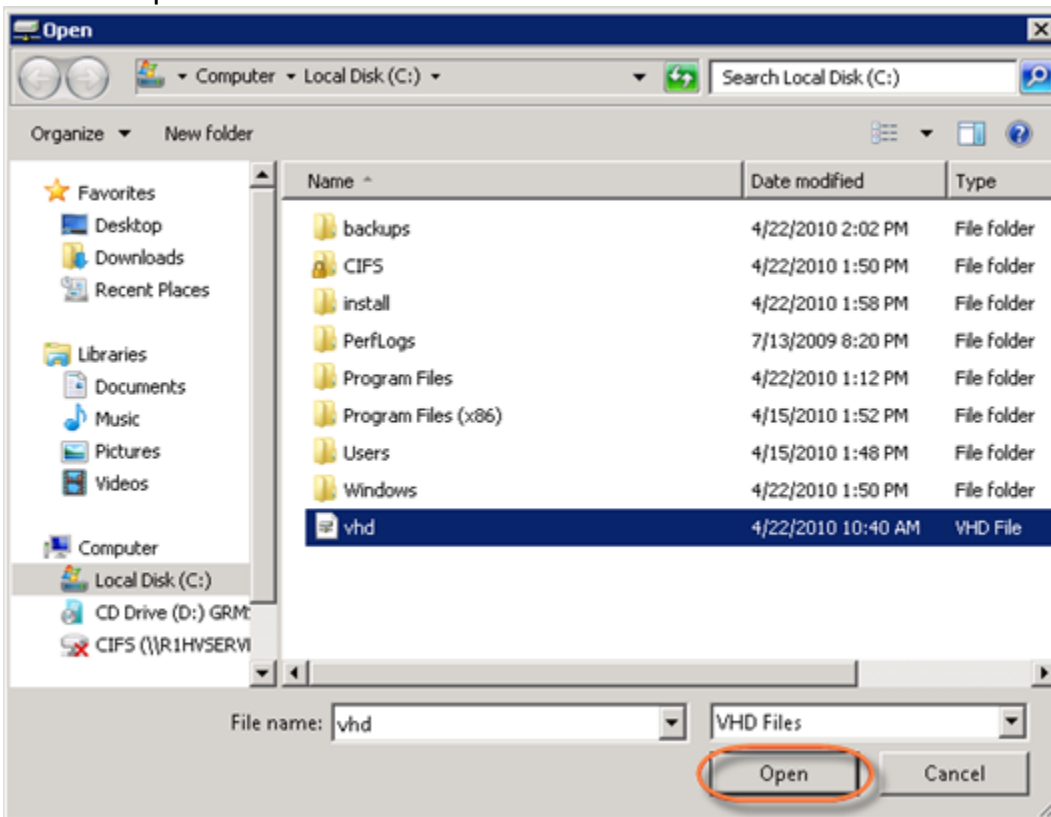
Alternatively, from the "File" menu you can select the "Attach" command.



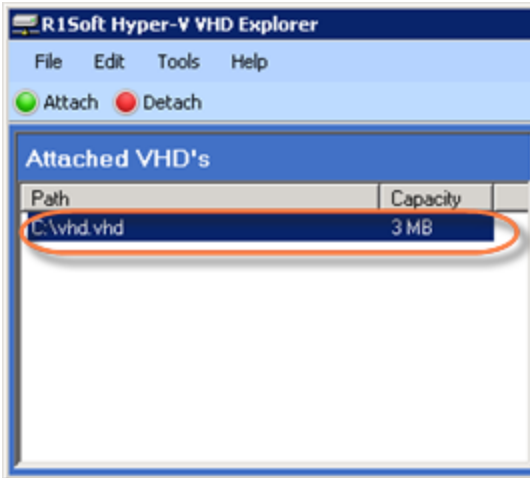
3. Locate the `.vhd` file.



4. Click "Open."

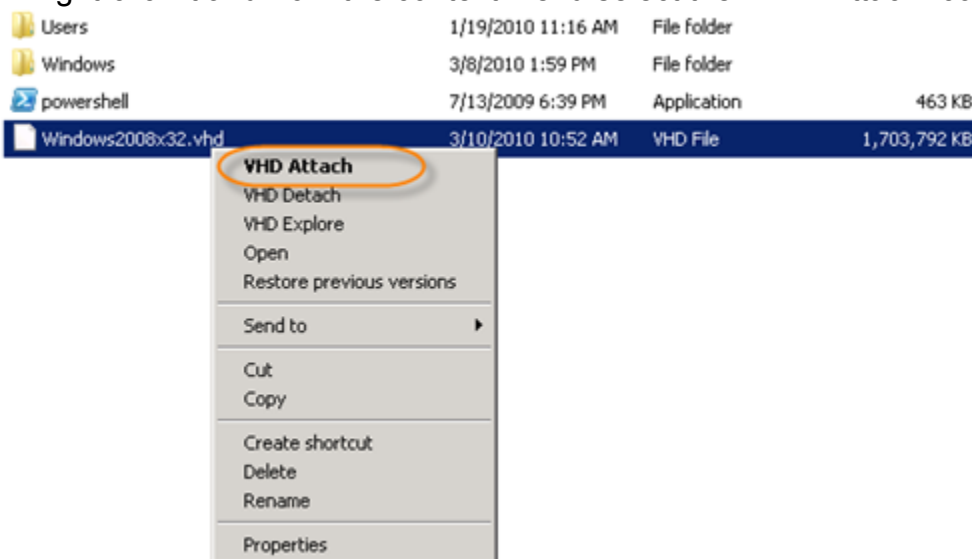


5. After a few moments, the VHD appears in the "Attached VHDs" pane.



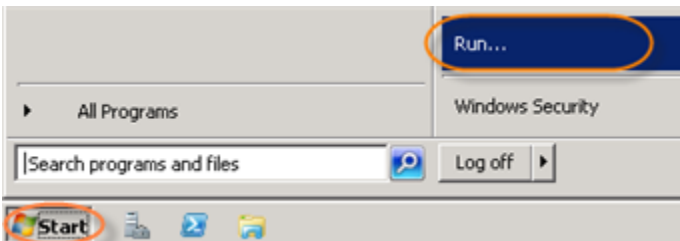
Attaching VHD Using Context Menu

1. Locate a `.vhd` file on your computer.
2. Right-click it and from the context menu select the "VHD Attach" command.

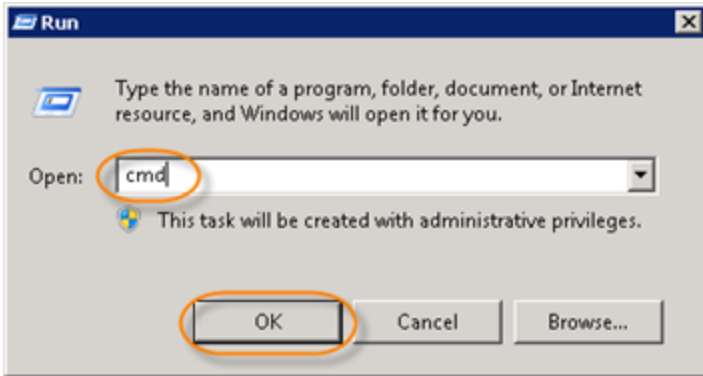


Attaching VHD Using R1Soft Hyper-V VHD Console

1. Click "Start" and select the "Run" menu.



2. Type "cmd" without quotes and press <Enter>.



3. Go to the folder where the R1Soft Hyper-V Explorer is installed.

```
Microsoft Windows [Version 6.1.7600]
Copyright (c) 2009 Microsoft Corporation. All rights reserved.

C:\Users\Administrator>cd c:\program files\r1soft hyperv explorer
c:\Program Files\R1Soft Hyperv Explorer>_
```

4. Run the following command:

"R1Soft Hyper-V Console.exe" -a -f

```
C:\Program Files\R1Soft Hyperv Explorer>"R1Soft Hyper-U UHD Console.exe" -a -f C
:\Windows2008x32.vhd
UHD file 'C:\Windows2008x32.vhd' attached successfully.

C:\Program Files\R1Soft Hyperv Explorer>dir E:\
Volume in drive E has no label.
Volume Serial Number is 9099-6A23

Directory of E:\

09/18/2006 01:43 PM          24 autoexec.bat
09/18/2006 01:43 PM          10 config.sys
01/19/2008 12:44 AM        <DIR>          PerfLogs
01/19/2008 12:44 AM        <DIR>          Program Files
09/11/2009 12:41 PM        <DIR>          Users
09/11/2009 12:33 PM        <DIR>          Windows
                2 File(s)          34 bytes
                4 Dir(s)  29,146,046,464 bytes free
```