

## Disabling and Enabling Control Panel Instances

A disabled Instance will not be replicated at the scheduled time. However, the Instance will remain in the list and can be enabled again for replication.



### Tip

You can disable a Control Panels Instance in the "Edit Control Panels Instance" window. See [Editing Control Panel Instances](#).

Follow the instructions below to disable Instances in the "Control Panels" tab of the Policy.

1. Click on "Policy" in the Main Menu to access the "Policies" page.



2. Find the necessary Policy in the "Policies" list, and click on the "Edit" icon in the "Actions" column for this Policy.

		Disable Selected		Enable Selected		Delete Selected		Bulk Edit	
<input type="checkbox"/>	Enabled	Name	Disk Safe	Agent Name	Frequency	Last Run Time	Next Run Time		
<input type="checkbox"/>		Plesk	plesk	plesk	Hourly	5/4/11 1:30 AM	5/4/11 2:30 AM		
<input type="checkbox"/>		virtuozzo	virtuozzo	virtuozzo	Hourly	5/4/11 1:32 AM	5/4/11 2:32 AM		

**Tip**

To find a Policy, you can use the Basic and Advanced List Filters. See [Customizing the Policies List](#).

3. The "Edit Policy" window will open.

The screenshot shows the 'Edit Policy' window with the following sections:

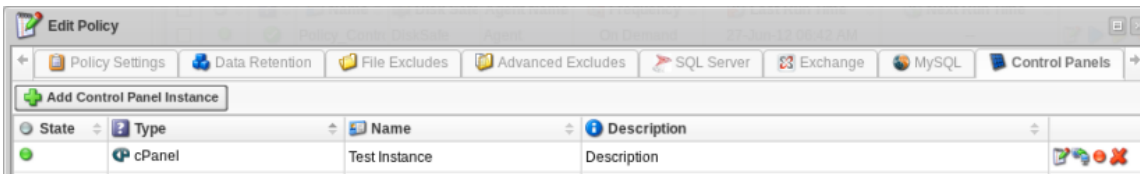
- Identification:**
  - Enabled:
  - Name: Policy\_Control Panel
  - Description: (empty field)
- Disk Safe:**
  - Agent: Agent
  - Disk Safe: DiskSafe
- Scheduling:**
  - Replication Schedule:  Replication schedule is ON DEMAND, policy must be manually ran.
  - Merge Schedule:  Daily at 12:00AM

At the bottom right, there are 'Save' and 'Cancel' buttons.

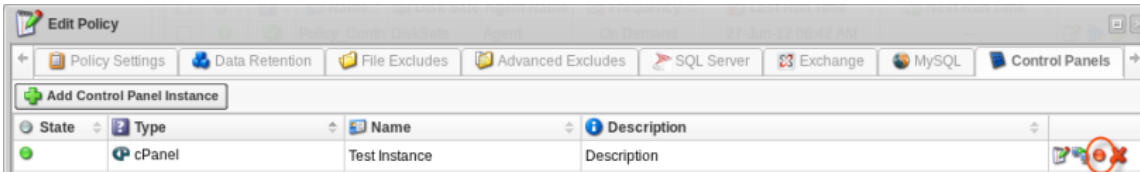
4. Choose the "Control Panels" tab.

This screenshot is identical to the previous one, but the 'Control Panels' tab in the top navigation bar is highlighted with a red circle, indicating it is the selected tab.

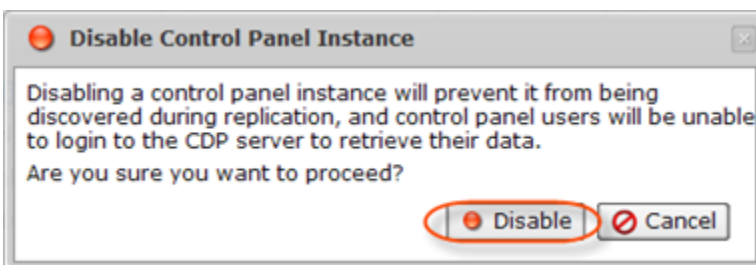
5. The "Control Panels Instances" list on the "Control Panels" tab of the Policy window will appear.



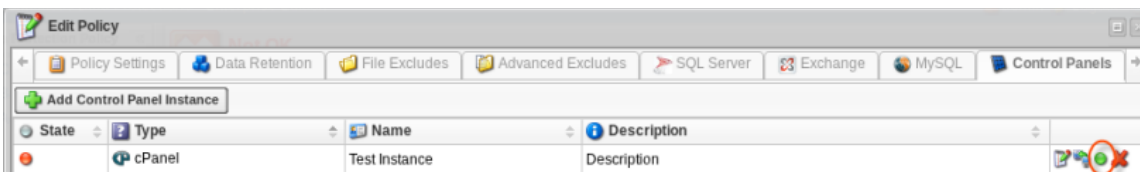
6. To disable the Control Panel Instance, click on the "Disable" icon in the "Actions" column for this Instance.



7. In the opened dialog, click "Disable" to confirm your request.



8. To enable a Control Panel Instance, click on the "Enable" icon in the "Actions" column for this Instance.



You can see the current status in the "State" column. The status is indicated by a green or red icon.

Icon	Meaning
	Enabled Control Panel Instance.
	Disabled Control Panel Instance.

9. Click "Save."

