

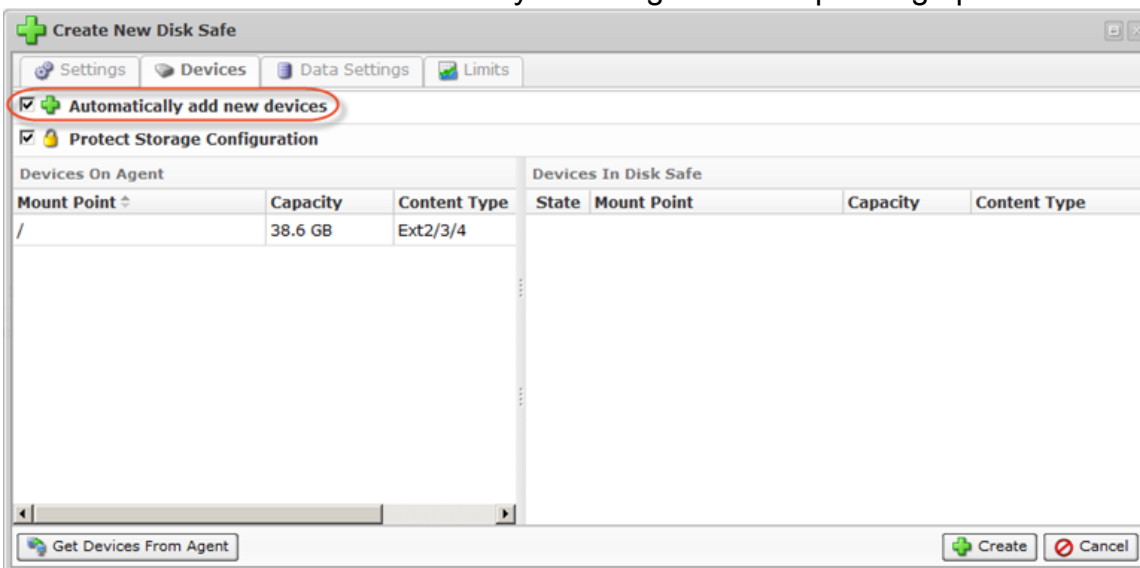
## Adding Devices

A Policy can replicate data on [Devices](#) assigned to the Disk Safe selected for this Policy.

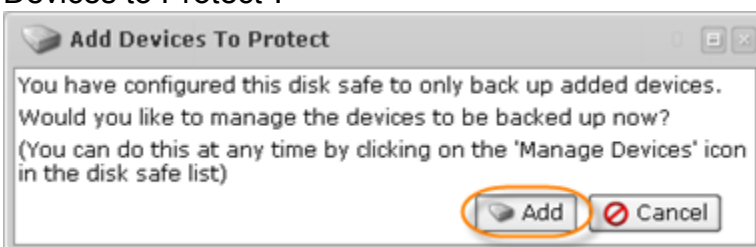
Follow the instructions below to add Device(s) to the Disk Safe in CDP.

1. Access the "Devices" tab of the "Edit Disk Safe" window. For the detailed instructions see [Accessing Devices](#).

When you create a new Disk Safe (See [Creating Disk Safes](#)) you can automatically add all available Devices to the Disk Safe by selecting the corresponding option:

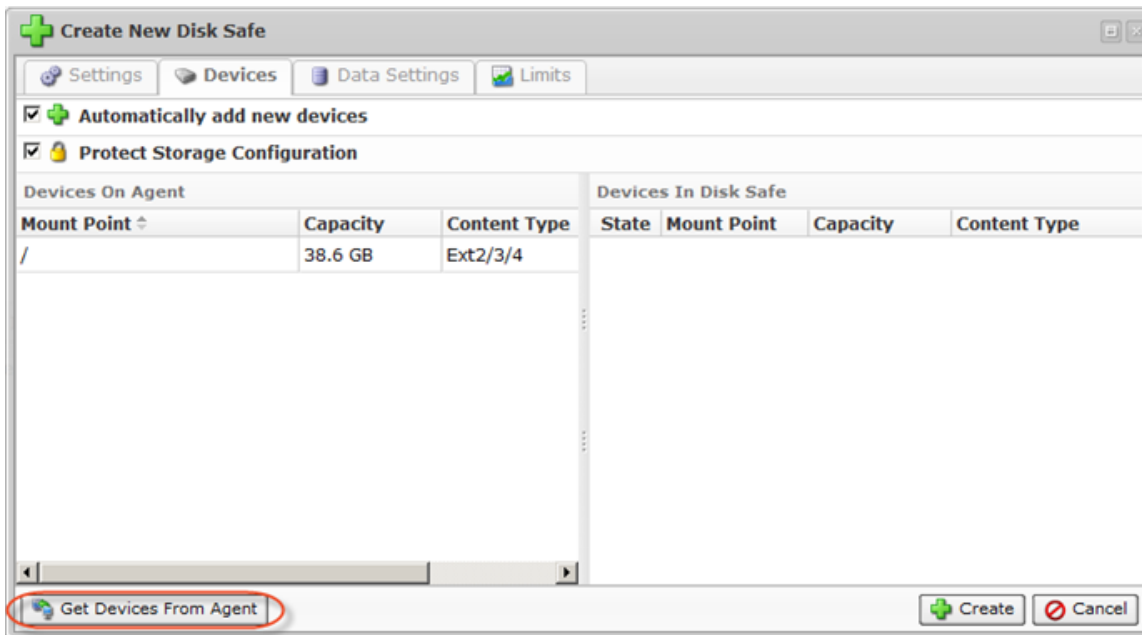


If you do not select this option, once you save the Disk Safe, a dialog will appear entitled, "Add Devices to Protect".



Click "Add."

2. In the "Devices" tab, click on "Get Devices from Agent."



3. All Host Devices will be listed in the "Devices On Agent" pane.

Devices On Agent			
Mount Point	Capacity	Content Type	
C:\	29,3 GB	NTFS	+
D:\	97,7 GB	NTFS	+
E:\	105,9 GB	NTFS	

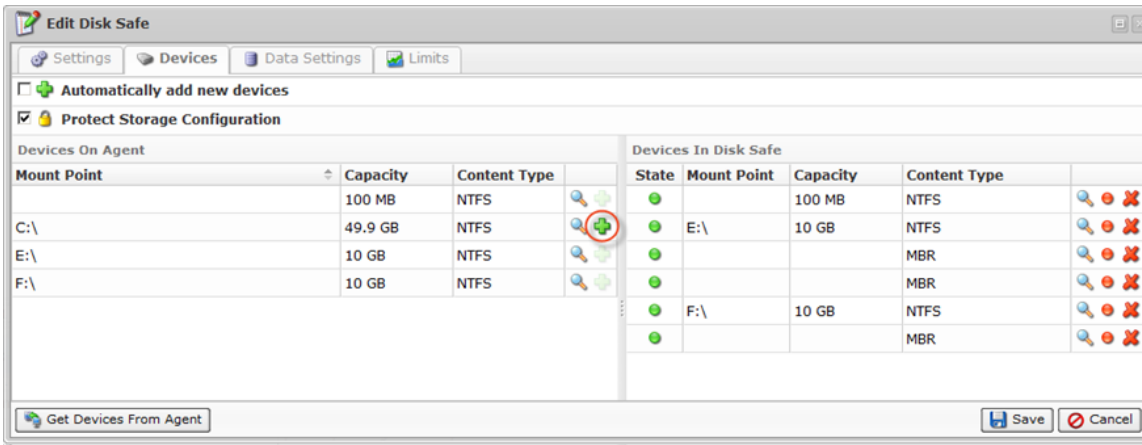
The following information is displayed in the table:

- Mount Point
- Capacity
- Content Type

See the description in [Accessing Devices](#).

**Tip**  
To display the details about the device, click on the device in the list. See [Accessing Devices](#).

4. Click on the "Add" icon. This will assign the Device to the Disk Safe. The Devices will appear in the "Devices In Disk Safe."



5. After you have assigned all necessary devices, close the "Devices" window.

