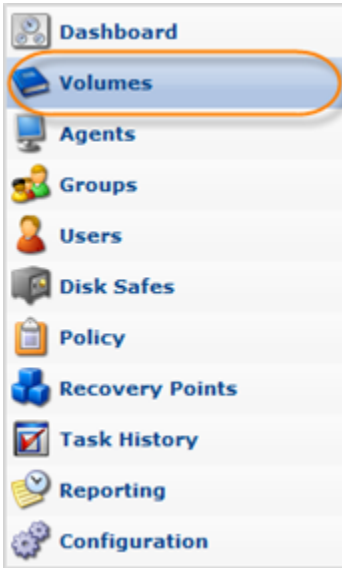


# Changing Volumes

All Volume properties are described in [Creating Volumes](#).

Follow the instructions below to change Volume properties in your CDP Enterprise Edition.

1. Click on "Volumes" in the Main Menu to access the "Volumes" page.



2. The "Volumes" page will list all existing Volumes.

Name	Description	Volume Path	Quota Type	Soft Quota	Hard Quota	On Disk Size	Deltas	
Accountants		C:\acc	🔴			0 bytes	0 bytes (0)	🔍 ⚙️ ✖️
Lib18-41	DB	C:\db\21	🟡	1 GB	2 GB	0 bytes	0 bytes (0)	🔍 ⚙️ ✖️
MyVolume	Personal data	C:\MyVol	🟡	100 GB	200 GB	3.4 MB	0 bytes (0)	🔍 ⚙️ ✖️
test	test	C:\_test	🔴			3.5 MB	0 bytes (0)	🔍 ⚙️ ✖️

<< 1 / 1 >> 10 Items Per Page



## Tip

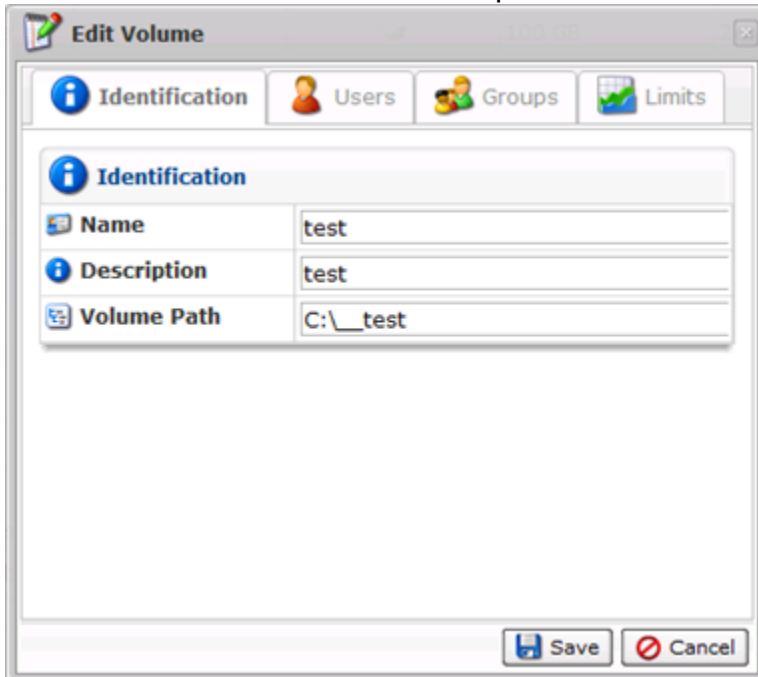
To find a Volume, you can use the Basic and Advanced List Filters. See [Customizing the Volumes List](#).

To change existing Volume properties, click on the Edit icon under Actions for the corresponding Volume in the list.

Name	Description	Volume Path	Quota Type	Soft Quota	Hard Quota	On Disk Size	Deltas	
Accountants		C:\acc	🔴			0 bytes	0 bytes (0)	🔍 ⚙️ ✖️
Lib18-41	DB	C:\db\21	🟡	1 GB	2 GB	0 bytes	0 bytes (0)	🔍 ⚙️ ✖️
MyVolume	Personal data	C:\MyVol	🟡	100 GB	200 GB	3.4 MB	0 bytes (0)	🔍 ⚙️ ✖️
test	test	C:\_test	🔴			3.5 MB	0 bytes (0)	🔍 ⚙️ ✖️

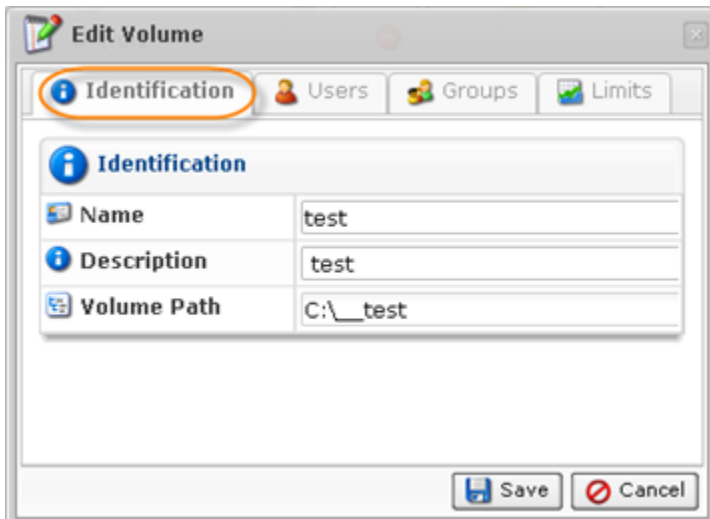
<< 1 / 1 >> 10 Items Per Page

3. The "Edit Volume" window will open.



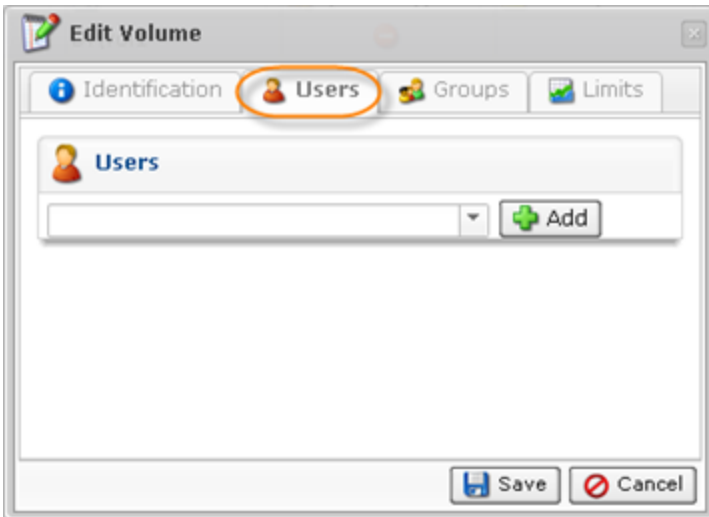
The following tabs can be edited:

Identification



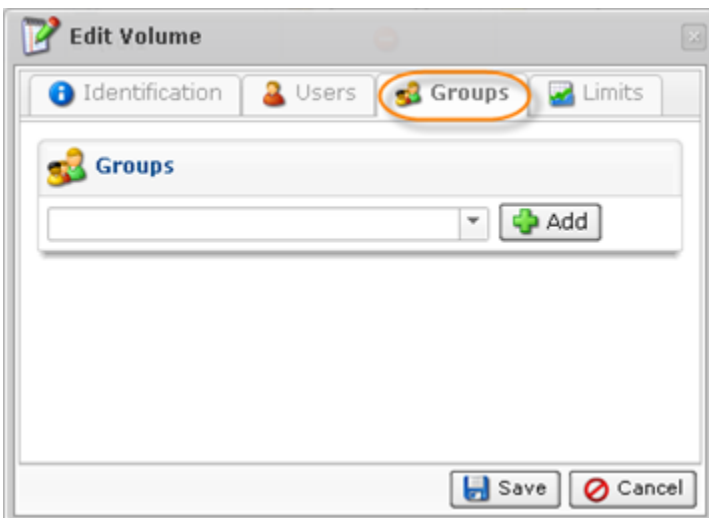
This tab allows you to change the name, description and the location of the Volume

Users



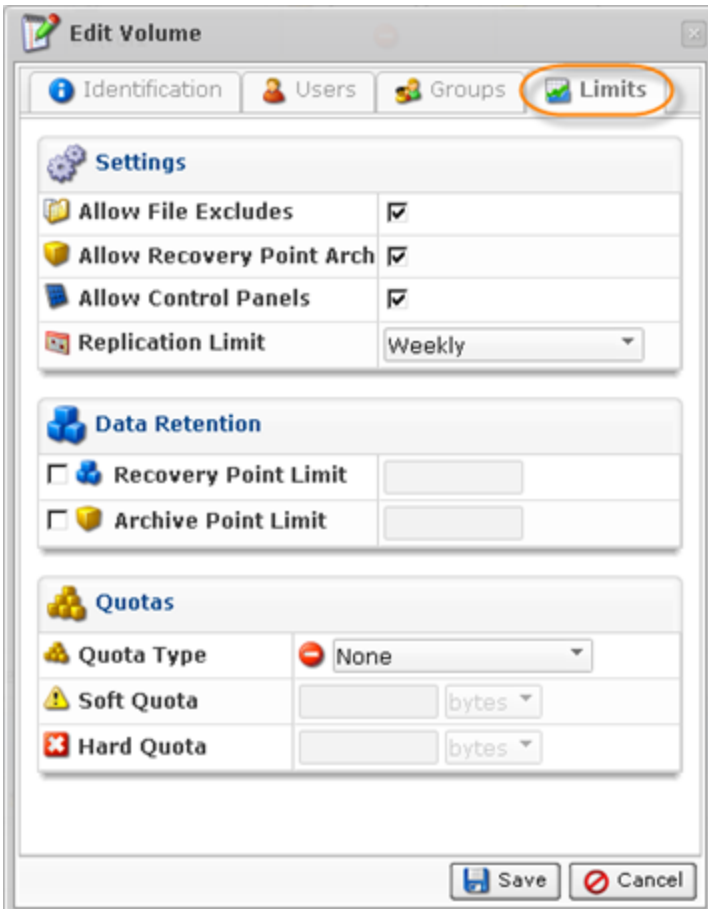
This tab allows you to add or remove Users assigned to the Volume. See [Assigning Users and Groups to a Volume](#).

Groups



This tab allows you to add or remove Groups assigned to the Volume. See [Assigning Users and Groups to a Volume](#).

Limits



This tab allows you to edit limits, quotas and other settings. See the detailed description in [Creating Volumes](#).

4. Once the changes are complete, click "Save."

