

Restarting CDP Server

[Linux Installations](#) | [Windows Installations](#)

Linux Installations

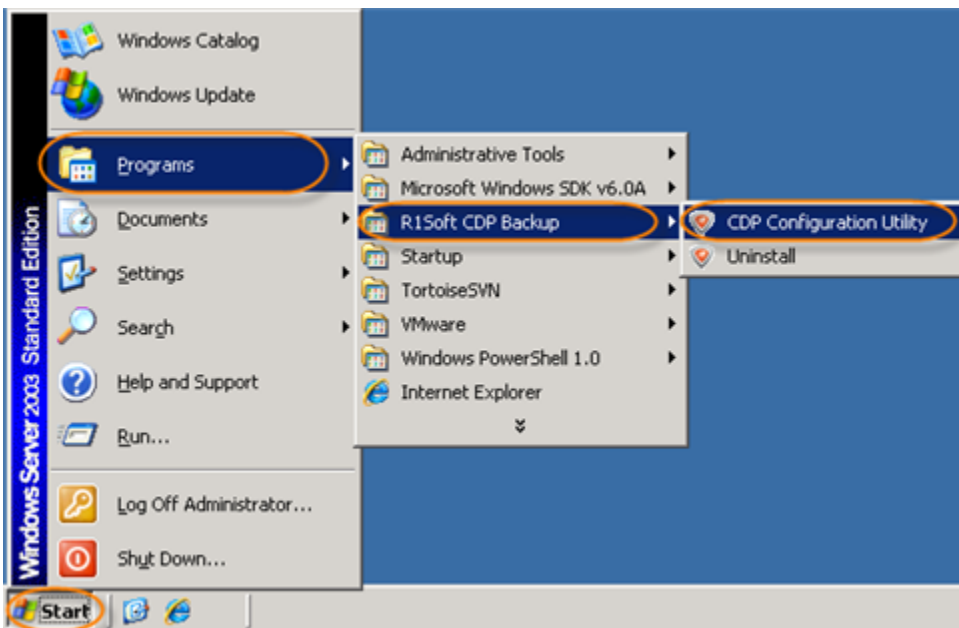
The R1Soft Linux CDP Server can be restarted using this command:

```
/etc/init.d/cdp-server restart
```

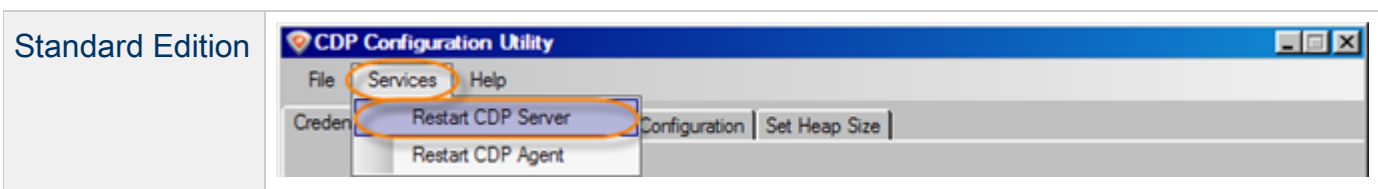
Windows Installations

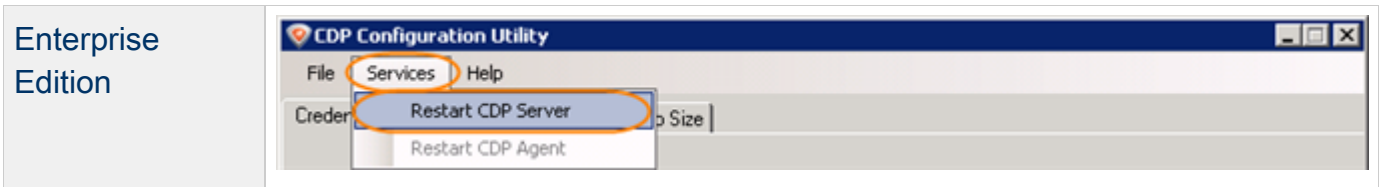
Follow the instructions below to restart the CDP Server using the [Windows CDP Configuration Utility](#).

1. Run the Windows CDP Configuration Utility by going to Start > (All) Programs > R1Soft CDP Backup > CDP Configuration Utility.

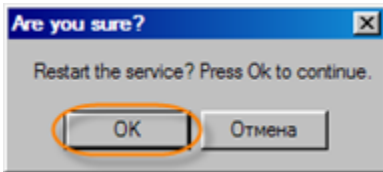


2. From the "Services" menu, select the "Restart CDP Server" command.





3. Confirm your request to restart the CDP Server by clicking "OK."



4. Once the CDP Server restarts successfully, a confirmation dialog is displayed. Click "OK."

