

Locking Recovery Points

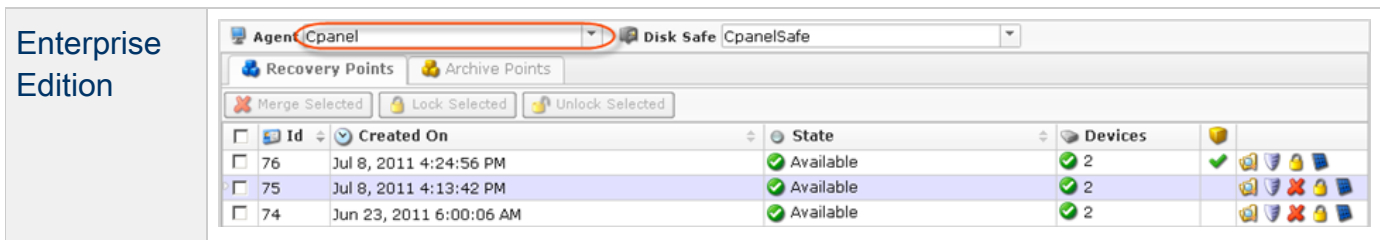
Locking [Recovery Points](#) allows you to protect them from merging (deleting) by Retention Policy or manually.

Follow the instructions below to browse file(s)/folder(s) in Recovery Points in CDP.

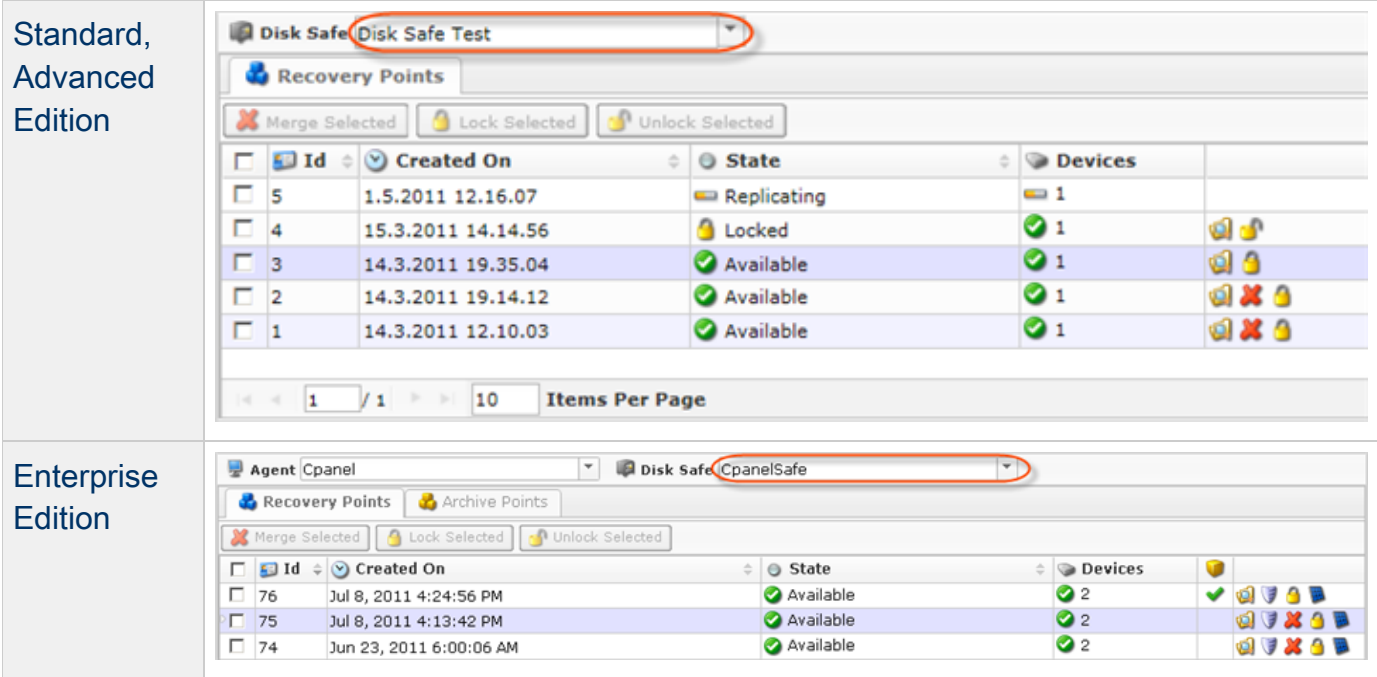
1. Click on "Recovery Points" in the Main Menu to open the "Recovery Points" window.



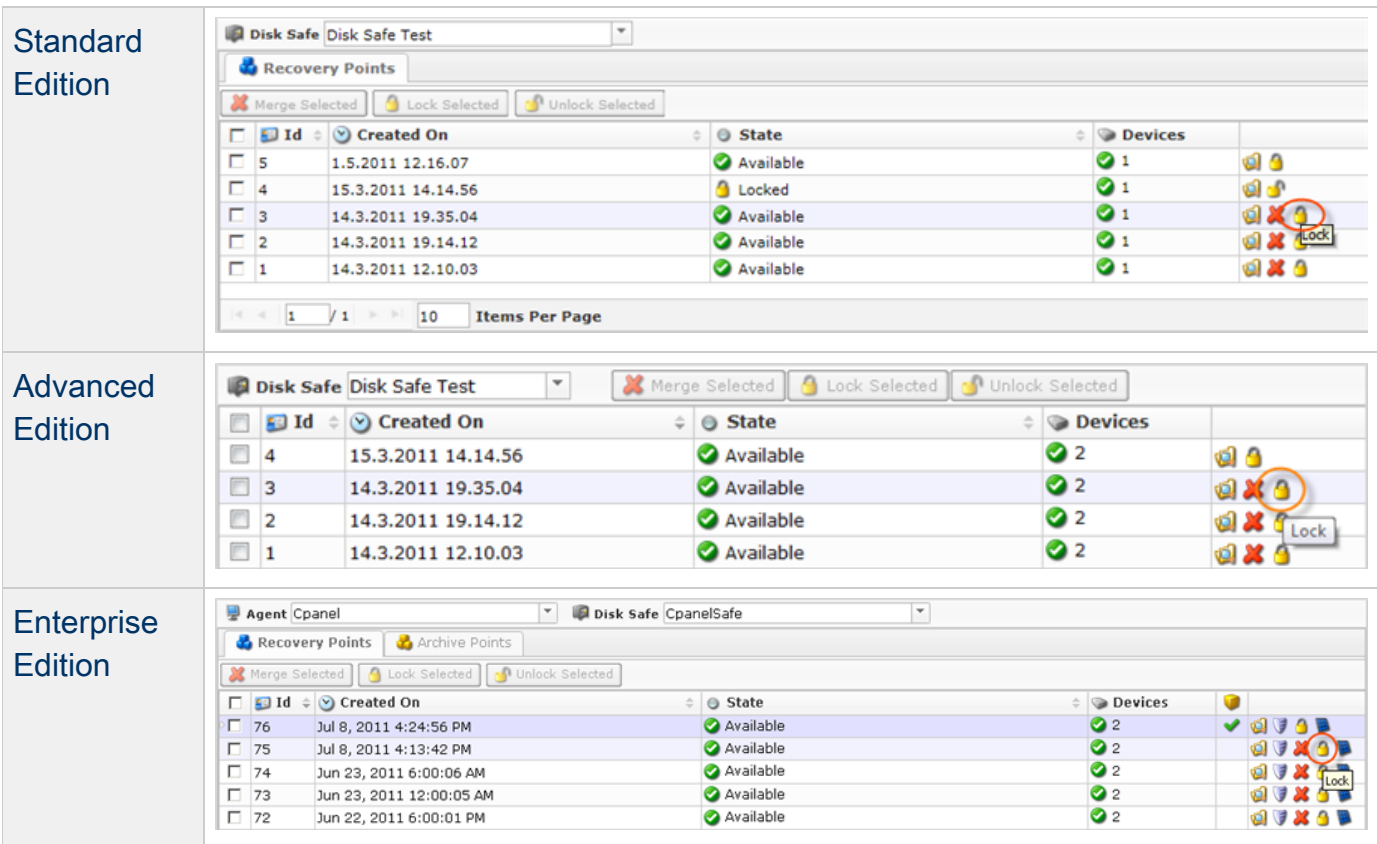
2. **Enterprise Edition:** In the "Recovery Points" list, select an Agent from the drop-down menu located on the "Recovery Points" list toolbar.



3. Select a Disk Safe from the drop-down menu located on the "Recovery Points" list toolbar.



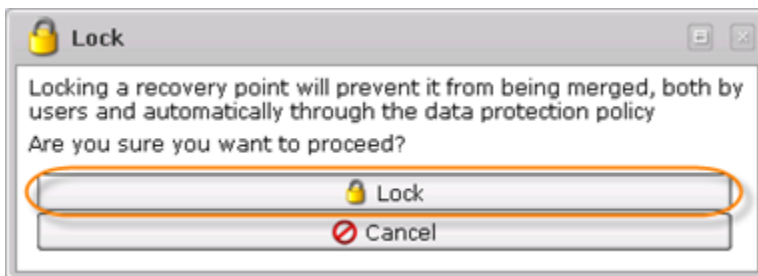
4. In the right top area, find a Recovery Point and click on the "Lock" icon in the "Actions" column for this Recovery Point.



Tip
To find a Recovery Point, you can use the Basic and Advanced List Filters. See Customizing the Recovery Points List.

Note
You can lock several Recovery Points simultaneously. See below Bulk Locking.

5. Confirm your request to lock the Recovery Point by clicking on "Lock" in the displayed confirmation window.



6. You can see the "Locked" state in the "State" column in the "Recovery Points" list.

| <input type="checkbox"/> | Id | Created On | State | Devices | |
|--------------------------|------|-------------------------|-----------|---------|--|
| <input type="checkbox"/> | 1528 | Jun 24, 2011 3:30:03 PM | Available | 2 | |
| <input type="checkbox"/> | 1526 | Jun 24, 2011 1:30:21 PM | Locked | 2 | |

Bulk Locking

Using the "Lock Selected" button, you can lock multiple Recovery Points simultaneously. Follow the instructions below.

1. Select several Recovery Points by checking check-boxes in the first column in the "Recovery

| <input type="checkbox"/> | Id | Created On | State | Devices | |
|-------------------------------------|------|--------------------------|-----------|---------|--|
| <input type="checkbox"/> | 1528 | Jun 24, 2011 3:30:03 PM | Available | 2 | |
| <input checked="" type="checkbox"/> | 1526 | Jun 24, 2011 1:30:21 PM | Available | 2 | |
| <input checked="" type="checkbox"/> | 1525 | Jun 24, 2011 12:30:09 PM | Available | 2 | |
| <input checked="" type="checkbox"/> | 1523 | Jun 24, 2011 10:30:07 AM | Available | 2 | |
| <input type="checkbox"/> | 1522 | Jun 24, 2011 9:30:27 AM | Available | 2 | |
| <input type="checkbox"/> | 1521 | Jun 24, 2011 8:30:05 AM | Available | 2 | |

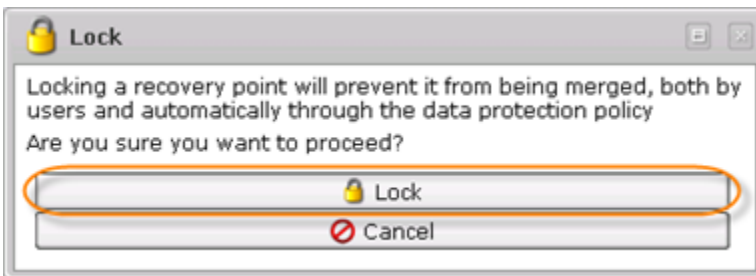
Points" list.

Tip
To find a Recovery Point, you can use the Basic Filter. See Customizing the Recovery Points List.

2. Click on "Lock Selected" located in the "Recovery Points" list toolbar.

| Merge Selected | | Lock Selected | | Unlock Selected | |
|-------------------------------------|------|--------------------------|-----------|-----------------|--|
| <input type="checkbox"/> | Id | Created On | State | Devices | |
| <input type="checkbox"/> | 1528 | Jun 24, 2011 3:30:03 PM | Available | 2 | |
| <input checked="" type="checkbox"/> | 1526 | Jun 24, 2011 1:30:21 PM | Available | 2 | |
| <input checked="" type="checkbox"/> | 1525 | Jun 24, 2011 12:30:09 PM | Available | 2 | |
| <input checked="" type="checkbox"/> | 1523 | Jun 24, 2011 10:30:07 AM | Available | 2 | |
| <input type="checkbox"/> | 1522 | Jun 24, 2011 9:30:27 AM | Available | 2 | |
| <input type="checkbox"/> | 1521 | Jun 24, 2011 8:30:05 AM | Available | 2 | |

3. Confirm your request to lock the Recovery Point by clicking on "Lock" in the displayed confirmation window.



4. You can see the "Locked" state in the "State" column in the "Recovery Points" list.

| <input type="checkbox"/> | Id | Created On | State | Devices | |
|-------------------------------------|------|--------------------------|-----------|---------|--|
| <input type="checkbox"/> | 1528 | Jun 24, 2011 3:30:03 PM | Available | 2 | |
| <input checked="" type="checkbox"/> | 1526 | Jun 24, 2011 1:30:21 PM | Locked | 2 | |
| <input checked="" type="checkbox"/> | 1525 | Jun 24, 2011 12:30:09 PM | Locked | 2 | |
| <input checked="" type="checkbox"/> | 1523 | Jun 24, 2011 10:30:07 AM | Locked | 2 | |
| <input type="checkbox"/> | 1522 | Jun 24, 2011 9:30:27 AM | Available | 2 | |
| <input type="checkbox"/> | 1521 | Jun 24, 2011 8:30:05 AM | Available | 2 | |
| <input type="checkbox"/> | 1520 | Jun 24, 2011 7:30:03 AM | Available | 2 | |