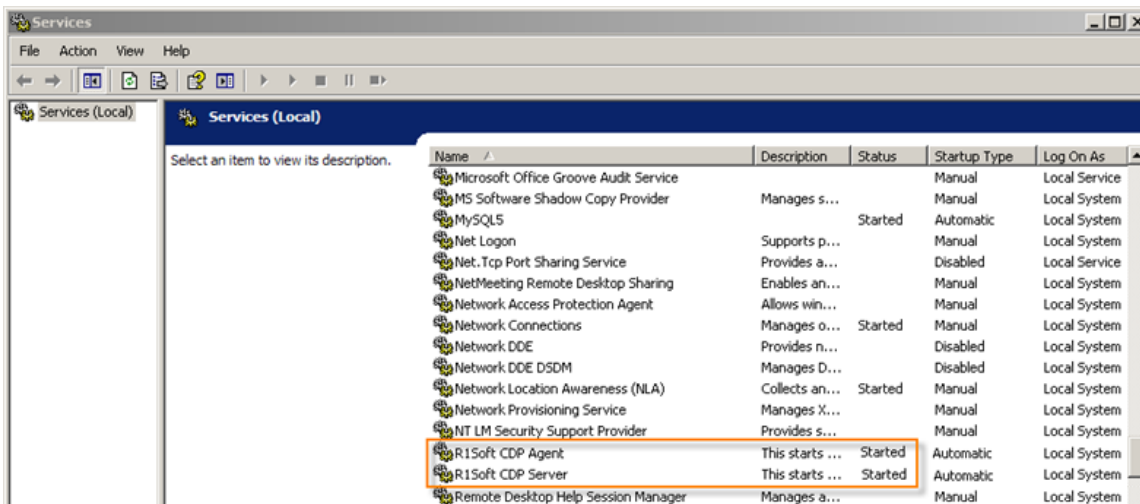


Configuring Enterprise Edition on Windows

After [installation](#), you need to configure the Windows CDP Server.

1. By default, the embedded web server required for the Web-based Interface will listen on TCP ports 80 (HTTP) and 443 (HTTPS). These ports are frequently in use by other applications. If you are already using ports 80 and 443, you will need to define different ports for CDP. 8080 (HTTP) and 8443 (HTTPS) are recommended alternatives to standard 80 and 443. You can choose any valid and unused TCP port that you like. See [Configuring CDP Server Ports](#). Then restart the CDP Server. See [Restarting CDP Server](#).
2. You may need to change firewall rules depending on where you are connecting to the Web Interface from.
3. You may need to configure heap memory. See [Configuring Heap Memory](#).
4. Make sure the CDP Server has been started to start using it.



5. You should now be able to connect to the CDP 3 Enterprise Edition Web Interface using Firefox or Internet Explorer. See [Accessing Enterprise Edition Web Interface](#).

For more information, refer to the following topics:

- [Migration from CDP 2.0 to CDP 3.0 Enterprise Edition](#)
- [Configuring CDP Server](#)