

Using Advanced Edition Dashboard

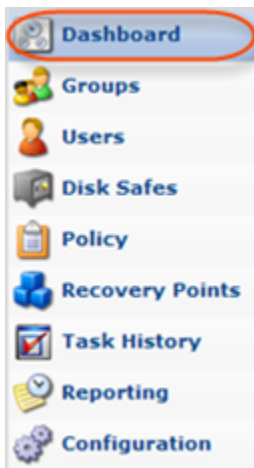
Follow the instructions below to access the Dashboard in CDP.

1. The Dashboard page typically loads automatically after you log in. See [Logging in to CDP Server](#).

The screenshot displays the dashboard for Continuous Data Protection 3.0 - Advanced Edition. The sidebar on the left contains the following menu items: Dashboard, Groups, Users, Disk Safes, Policy, Recovery Points, Task History, Reporting, and Configuration. The main content area is divided into three sections:

- Last 10 Finished Replications:** A table with columns for State, Type, Name, Start Time, and Detail. It shows four entries, all with a green checkmark state.
- Disk Quotas:** A table with columns for Drive, Free Space, % Free, Soft Limit, and Hard Limit. It shows data for C:\ and d:\.
- Last 10 Tasks With Alerts:** A table with columns for State, Type, Name, Start Time, and Detail. It shows ten entries, most with a red 'X' state, indicating alerts.

To access the Dashboard from any other screen, click on "Dashboard" in the main menu.



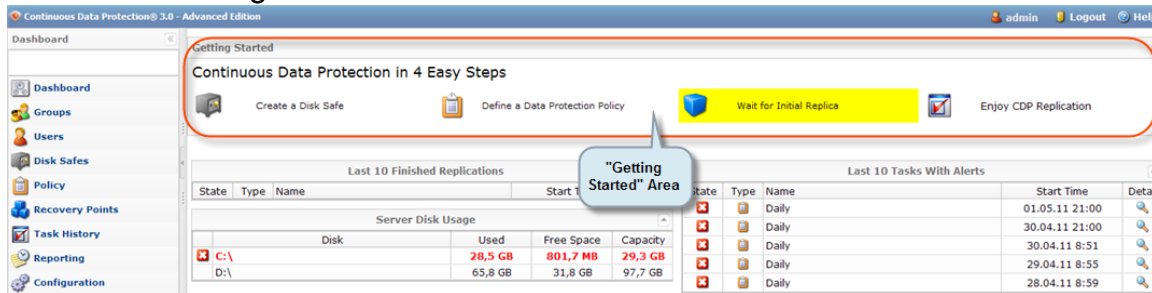
Tip

You can access the Dashboard by typing the Server IP, the root folder in the browser address bar. For example: <http://10.61.200.31/>. Note that the address is case sensitive.



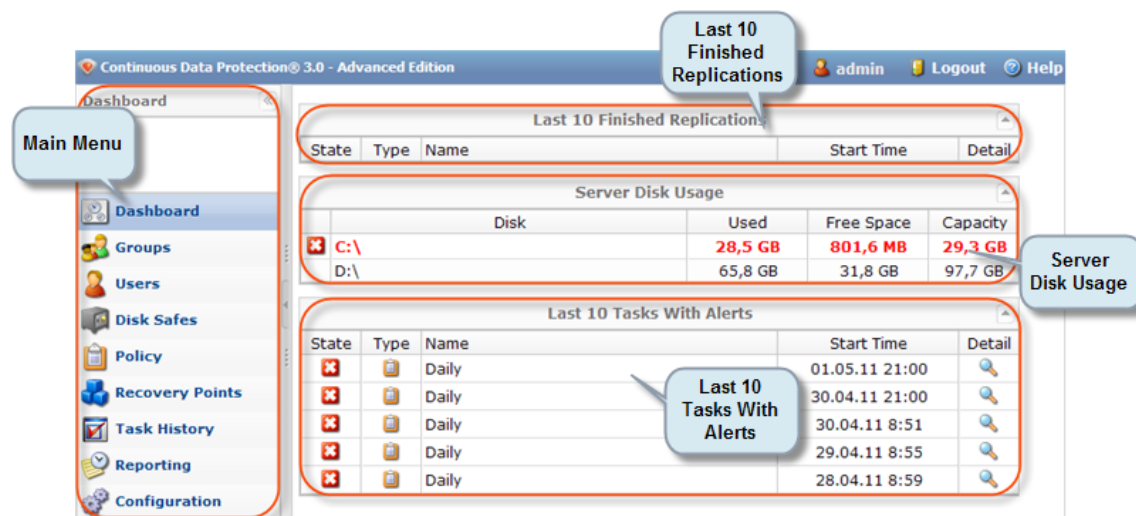
After you log in to CDP for the first time after installation, you see that the "Dashboard" has an

additional "Getting Started" area.



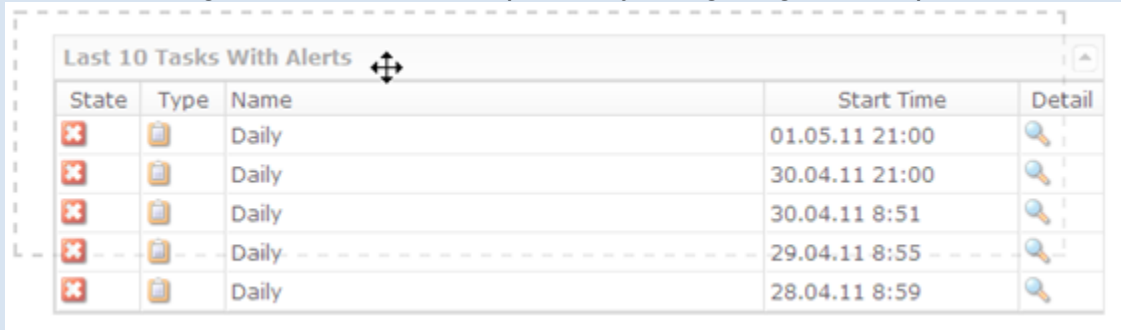
The Dashboard can contain the following panes:

- Getting Started Area - Provides access to the major functions of the system.
- Last 10 Finished Replications - Provides details of ten recently finished Policies. You can access their summary.
- Last 10 Tasks with Alerts - Provides details of ten recently finished Tasks with alerts. You can see the alerts in detail.
- Server Disk Usage - Provides information about soft and hard quotas for each Device.



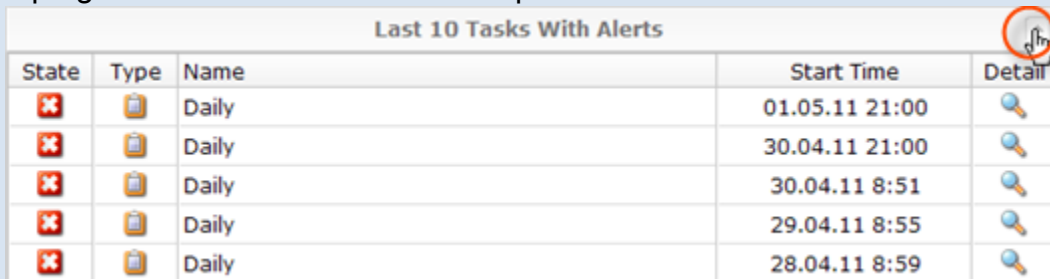
❏ Tips

- You can change the location of the panes by using drag-and-drop.



State	Type	Name	Start Time	Detail
✖	📅	Daily	01.05.11 21:00	🔍
✖	📅	Daily	30.04.11 21:00	🔍
✖	📅	Daily	30.04.11 8:51	🔍
✖	📅	Daily	29.04.11 8:55	🔍
✖	📅	Daily	28.04.11 8:59	🔍

- You can expand/collapse the pane details by clicking on the arrow button in the top right corner of the header of the pane.



State	Type	Name	Start Time	Detail
✖	📅	Daily	01.05.11 21:00	🔍
✖	📅	Daily	30.04.11 21:00	🔍
✖	📅	Daily	30.04.11 8:51	🔍
✖	📅	Daily	29.04.11 8:55	🔍
✖	📅	Daily	28.04.11 8:59	🔍

Getting Started Area | [Last 10 Finished Replications](#) | [Last 10 Tasks with Alerts](#) | [Server Disk Usage](#)

Getting Started Area

For beginners, the links to the main actions are displayed in the Dashboard:









- Create a Disk Safe - See [Creating Disk Safes](#).
- Define a Data Protection Policy - See [Creating Policies](#).
- Wait for Initial Replica - See [Accessing Task History](#).
- Enjoy CDP Replication

After clicking on the link, you will go directly to the appropriate screen.

Last 10 Finished Replications

The table displays information about 10 recently finished Policies. The table includes the following columns:

- **State** - Graphically indicates the current State of the Task. The state can change over time. Move the mouse pointer over it to display a yellow tool tip that informs you of what the icon indicates. A Task can be in one (1) of the following states:
 - Queued - The Task is waiting and will run as soon as more resources are available.
 - Running - The Task is currently in progress.
 - Finished - The Task has completed successfully and without errors.
 - Error - The Task has completed with one or more errors.
 - Canceled - The Task has been terminated by the User on the "Reporting" page while running.
 - Duplicate - There is a duplicate scheduled Task in the queue.
- **Type** - Graphically indicates Task type: Restore Files, Merge Recovery Points or Data Protection Policy. Move the mouse pointer over it to display a yellow tool tip that informs you of what the icon indicates.
- **Name** - For Data Protection Policies, the name specified in the Policy properties is shown in this column.
- **Start Time** - Date and time when a Task was started.
- **Detail** - By clicking on the icon located in the "Detail" column, you can open the "Summary" window for the Task. The same information as shown on the "Summary" tab in the "Reporting" screen is provided in the opened window. See descriptions in [Viewing Task Summary](#).

Last 10 Finished Replications				
State	Type	Name	Start Time	Detail
✓		Policy 2	10/26/09 7:00 AM	
✓		Policy 2	10/25/09 7:00 AM	
✓		Policy 1	10/24/09 10:28 PM	
✓		Policy 1	10/23/09 4:41 PM	

Last 10 Tasks with Alerts

The table displays information about 10 recent Tasks with alerts. Columns are the same as in "Last 10 Finished Replications."

By clicking on the icon located in the "Detail" column, you can open the "Alerts" window for the Task. The same information as shown on the "Alerts" tab in the "Reporting" screen is provided in the opened window. See descriptions in [Viewing Alerts](#).

Last 10 Tasks With Alerts				
State	Type	Name	Start Time	Detail
		Policy 2	11/29/09 12:00 AM	
		Policy 2	11/28/09 12:00 AM	
		Policy 2	11/27/09 12:00 AM	
		Policy 2	11/26/09 12:00 AM	
		Policy 2	11/25/09 12:00 AM	
		Policy 2	11/24/09 12:00 AM	
		Policy 2	11/23/09 12:00 AM	
		Policy 2	11/22/09 12:00 AM	
		Policy 2	11/21/09 12:00 AM	
			11/20/09 11:49 AM	

Server Disk Usage

- Alert - Move the mouse pointer over it to display a yellow tool tip that shows you the message. For example, "Disk space limit has been reached."

Server Disk Usage				
	Disk	Used	Free Space	Capacity
	C:\	28,5 GB	802,4 MB	29,3 GB
	D:\	65,8 GB	31,8 GB	97,7 GB

Disk space limit has been reached

- Disk - Disk name. See [Devices](#).
- Used - Disk Resources occupied by data, bytes.
- Free Space - Disk Resources not occupied by data, bytes.
- Capacity - Full Disk Resources, bytes.