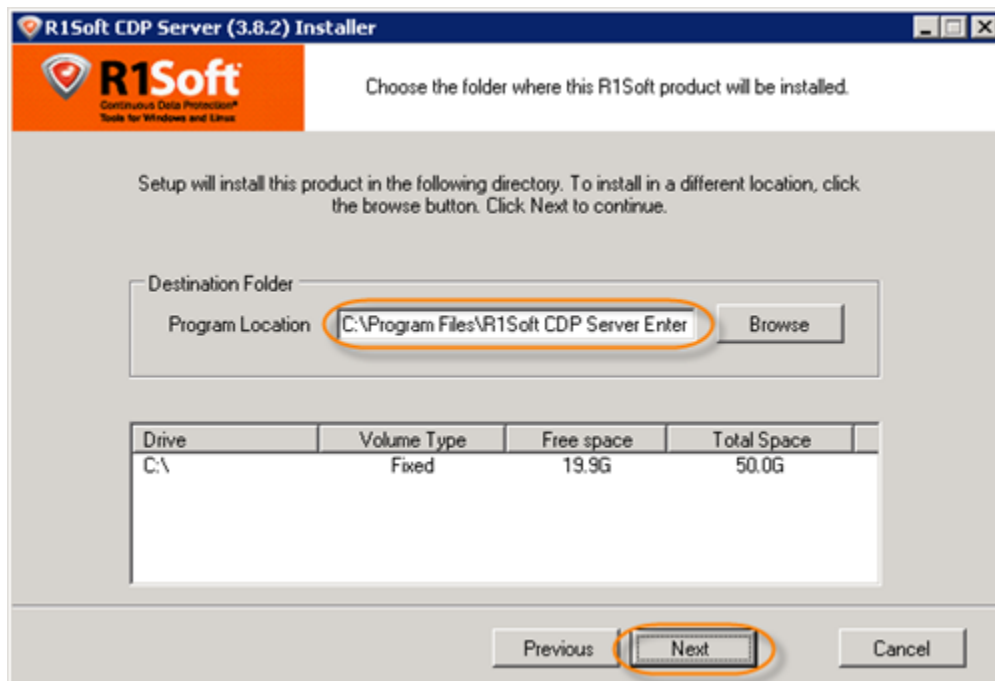


Accessing Example API Functions

You can access Example API Functions in [<installdir>/apisamples](#) directory.

Windows CDP

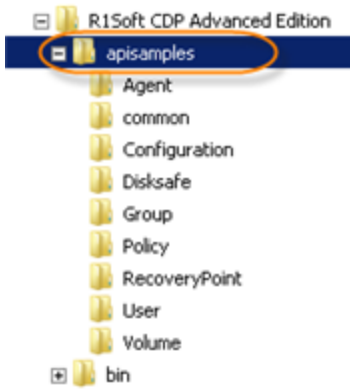
During CDP Server installation you can select the installation directory for the server or leave the default location untouched.



By default, the CDP Server is installed to:

- [C:\Program Files\R1Soft CDP Server Standard Edition](#)
- [C:\Program Files\R1Soft CDP Server Enterprise Edition](#)
- [C:\Program Files\R1Soft CDP Server Advanced Edition](#)

The following screenshot displays the contents of the [apisamples](#) directory of R1Soft CDP Advanced Edition directory (Windows).



Linux CDP

API samples are located in `/usr/sbin/r1soft/apisamples` directory. This directory cannot be changed because it is hardcoded in `.deb` and `.rpm` packages. The following screenshot displays the contents of the `apisamples` directory. The screenshot is made from Debian Gnome desktop.



Tip

Nautilus file manager should be started with root permissions because directory `/usr/sbin/r1soft` is not readable by regular users.

