

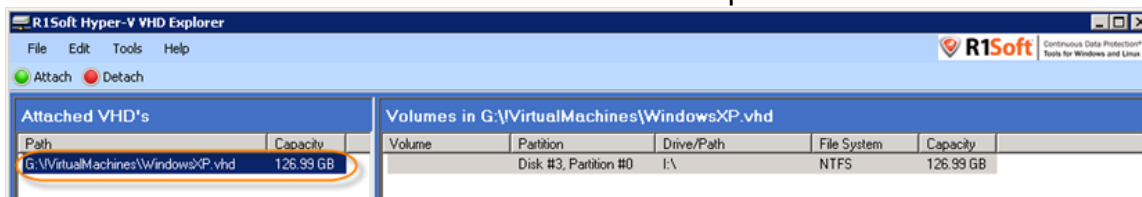
Managing VHD Volumes

Managing VHD Volumes

You can use the R1Soft Hyper-V VHD Explorer to manage the Volumes within the attached VHDs.

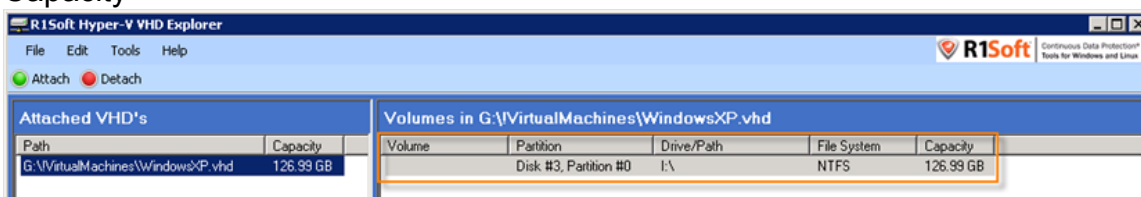
To access Volumes, follow the instructions below.

1. Launch the R1Soft Hyper-V VHD Explorer.
2. Select an attached VHD in the "Attached VHDs" pane.



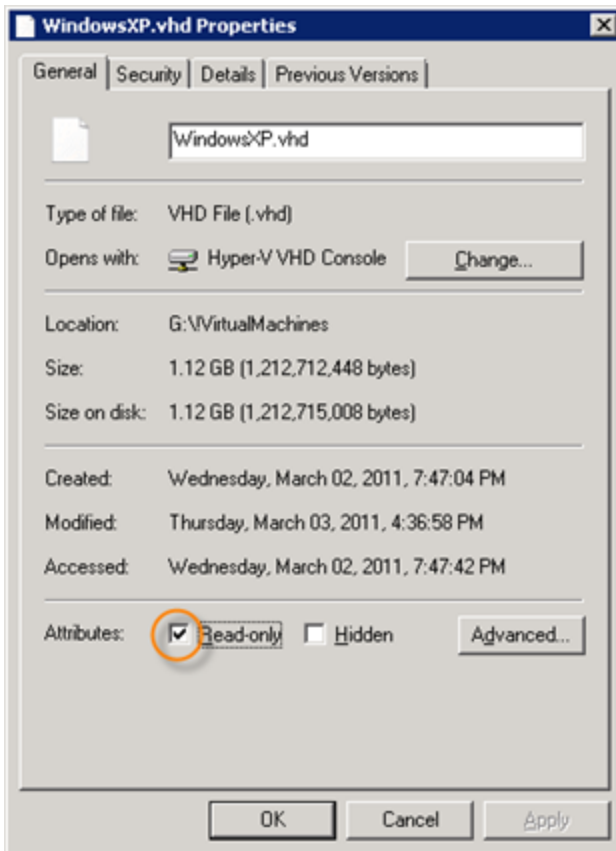
In the right "Volumes in..." pane, you can see the following data about existing Volumes on the selected VHD:

- Volume
- Partition
- Drive/Path
- File System
- Capacity



Tip

If the Volumes are not displayed, try to remove the Read-only attribute for the [.vhd file](#).



You can perform the following operations with Volumes:

- Mount Volume - See [Mounting VHD Volumes](#).
- Change Volume's Drive Letter - See [Changing VHD Volume's Drive Letter](#).
- Unmount Volume - See [Unmounting VHD Volumes](#).
- Explore - See [Exploring VHD Volumes](#).