

Adding Another Drive to the Server Disk Usage

Question

What is the process for adding another drive to the server disk usage? I would like to add `/dev/hda2` for replication.

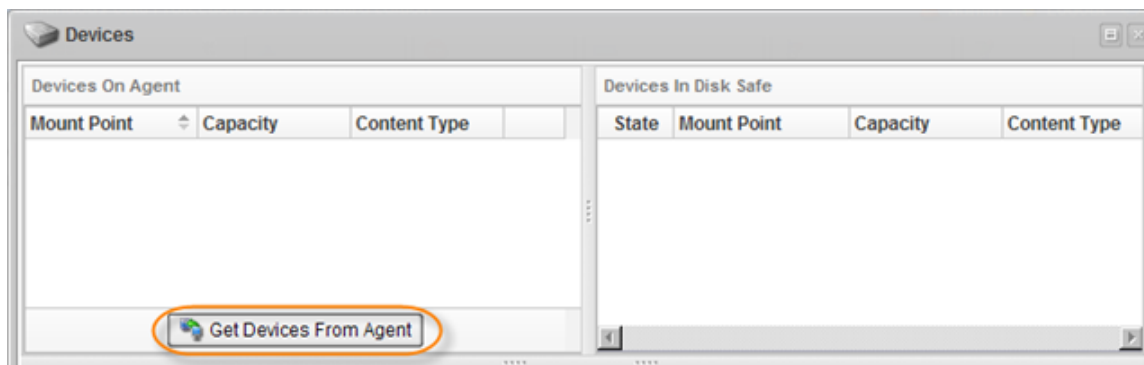
Solution

Follow the instructions below.

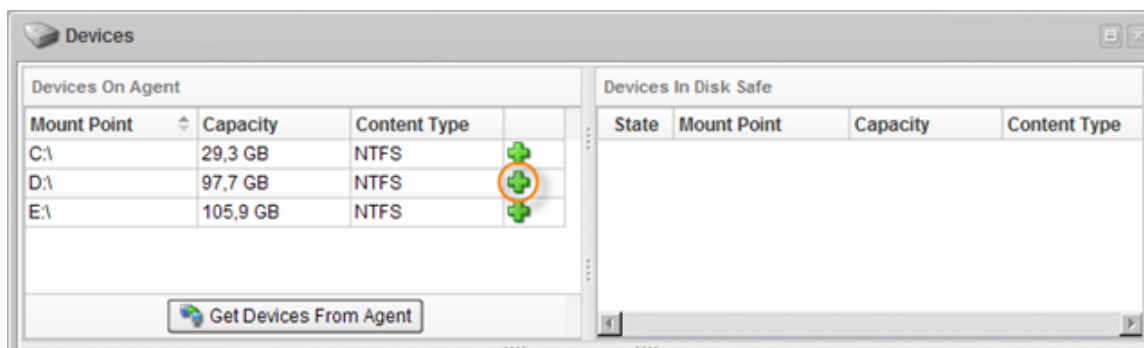
1. Mount your new drive to the system. Example:

```
mount /dev/hda2/backup_cdp
```

2. Then you can add the new Device in the "Devices" window of the Disk Safe. You can add Devices while creating/editing a Disk Safe. Click the "Get Devices from Agent" button to view the list of all available drives.



3. Select the drives you want to add to the Disk Safe by clicking the green plus icon.



Related Articles

Page: Adding Another Drive to the Server Disk Usage (Knowledge Base) Labels:
[server_disk_usage_3, device_3](#)

Page: Adding Another Drive to the Server Disk Usage (Knowledge Base) Labels:
[server_disk_usage_3, device_3](#)
