

Monitoring Agents in Data Center Console

CDP Data Center Console allows you to monitor parameters of Agents on multiple CDP Servers at once. This can be done from the "Agents" screen.

Follow the instructions below to access the "Agents" screen.

1. Select "Agents" from the Main Menu.



You will enter the "Agents" screen.

Name	CDP Server	Hostname	Port Number	OS Type	Add-ons	Actions
122 ubuntu 11.04 Agent	TestServ	10.230.109.122	1167			
agent 57	Serv 1	10.230.106.57	1167			
agent231	Serv 1	10.230.200.231	1167			

1 / 1 10 Items Per Page

Agent Details for 'agent231'

Details Groups Users

Identification

Name	agent231
CDP Server	Serv 1
Hostname	10.230.200.231
OS Type	Linux
Port Number	1167
Add-ons	

Statistics

Groups	1
Users	2

The Agents List | Details Pane

The Agents List

The list of all Agents is displayed with the following columns:

- Name - The name of the Agent.
- CDP Server - The name of the CDP Server to which the current Agent belongs.

Note
The server name is displayed in the form of a link. You can click the link for quick access to the CDP Server.

Status	Name	CDP Server	Quota Type	Soft Quota	Hard Quota
	linux_vol	Houston DC			

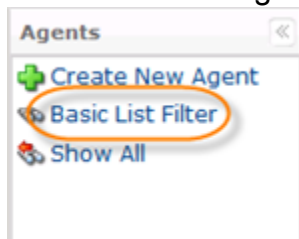
- Hostname - The hostname or IP address of the Agent.
- Port Number - The port used to connect to the Agent.
- OS Type - The icon-indicating operation system (Windows or Linux) is displayed in this column.
- Actions - This column contains the icon. Clicking this icon will allow you to "drill down" to the specified CDP's "Agents" screen.

Tip
Use "Pages Navigation" to look through the "Agents" list more efficiently.

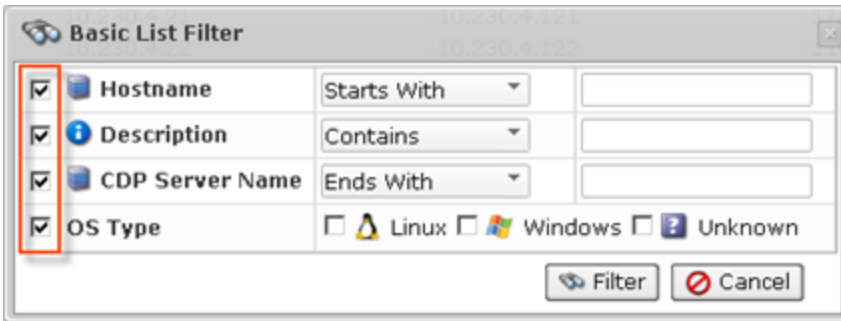
/ 6 Items Per Page

Filtering the "Agents" List

You can use a Basic List Filter to sort the "Agents" list. Click on the "Basic List Filter" link to access the filtering options.



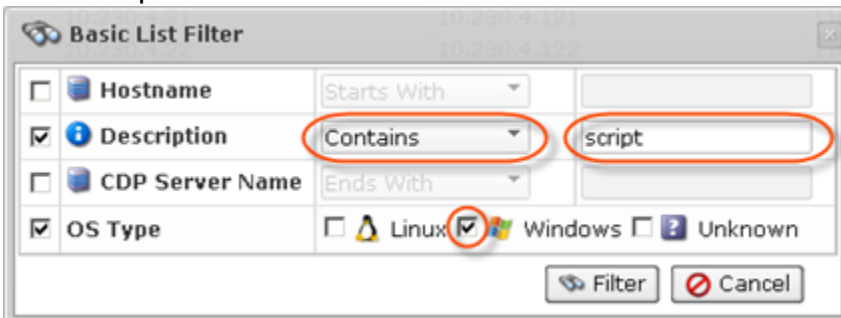
1. Select the necessary options to filter.



- Hostname - Allows you to sort by hostname.
- Description - Allows you to sort by description.
- CDP Server Name - Allows you to sort by CDP Server name.
- OS Type - Allows you to sort by the OS:
 - Linux
 - Windows
 - Unknown

2. Select the type of search from the drop-down menu (Starts With/Contains/Ends With) and enter the hostname/description/Server name to the field. Select the OS Type.

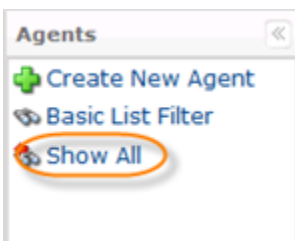
For example:



3. Click on the "Filter" button.



If you want to discard filtering options and view the whole list, click "Show All."



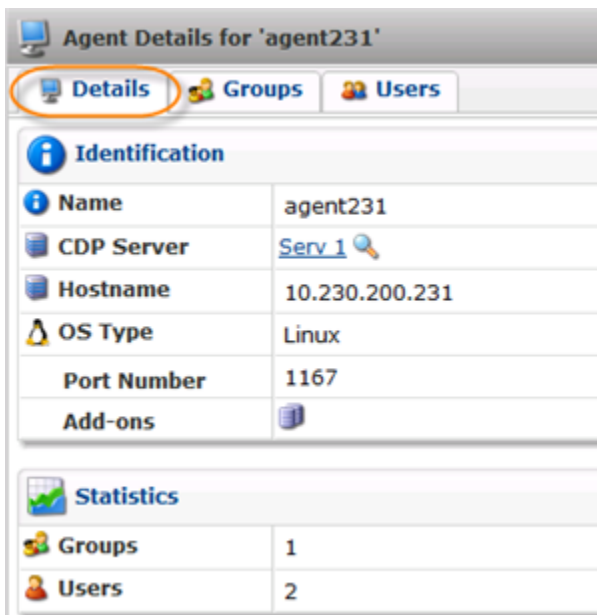
Details Pane

Click on the Agent in the "Agents" list to see its details in the "Details" pane. The "Details" pane has the following tabs:

- Details
- Groups
- Users

Filtering the "Agents" List | [Details Tab](#) | [Groups Tab](#) | [Users Tab](#)

Details Tab



The screenshot shows a window titled "Agent Details for 'agent231'". At the top, there are three tabs: "Details" (selected and highlighted with an orange circle), "Groups", and "Users". Below the tabs, there are two main sections: "Identification" and "Statistics".

Identification	
Name	agent231
CDP Server	Serv_1 🔍
Hostname	10.230.200.231
OS Type	Linux
Port Number	1167
Add-ons	

Statistics	
Groups	1
Users	2

Most of the information presented here is the same as the data shown in the Agents list columns.

If you click on the 🔍 icon near the CDP Server name, you will access the server details window.

CDP Server Details for 'Serv 1'

Details

Identification

Name	Serv 1
Description	
Status	CDP server is online
Enabled	Enabled

Server Details

OS Type	Linux
Product Type	Enterprise Edition
Product Version	3.14.0
License Validity	License is valid
Agents (Used/Licensed)	2 / 100
Agents with MySQL (Used/Licensed)	1 / 100
Configuration Presets	CUSTOM
Sub-Users	Enabled
Volumes	Enabled
Groups	Enabled
Power-Users	Enabled
Hosting Control Panels	Enabled

Connection Settings

Hostname	10.230.200.38
API HTTP Port	9080
API SSL Port	9443
COM SSL Port	5443
UI HTTP Port	80
UI SSL Port	443

For more information about server details, see [Accessing CDP Servers in Data Center Console](#).

Groups Tab

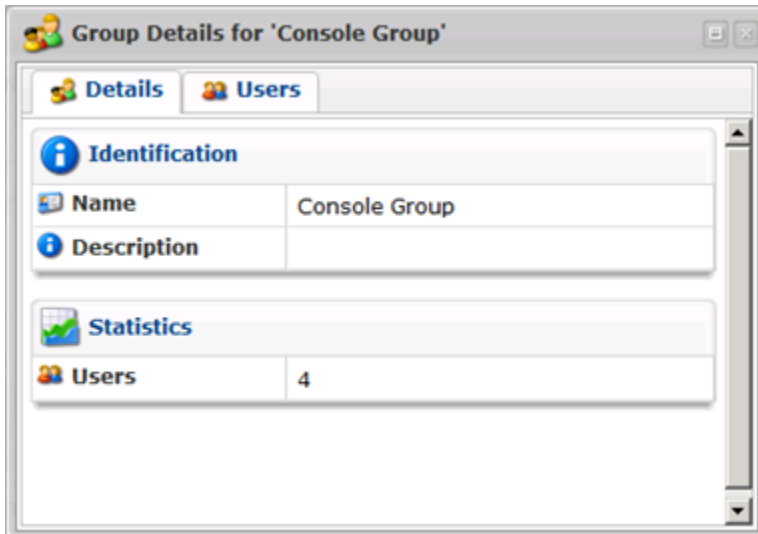
Agent Details for 'agent231'

Details **Groups** **Users**

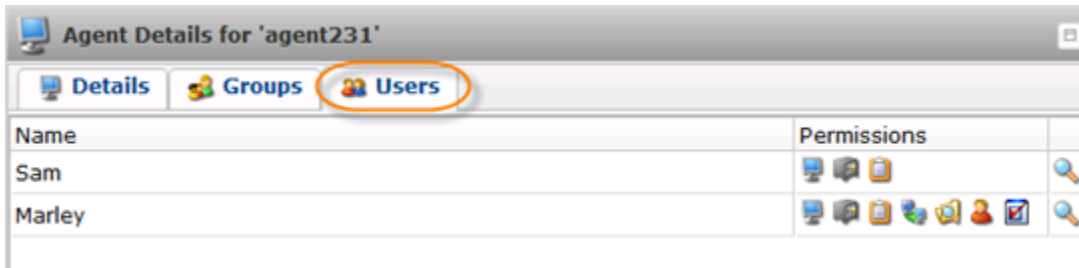
Name	Description	Permissions
Console Group		


Displays the list of Groups assigned to the Agent. In the "Permissions" column, you can see the set of permissions of the current group. And if you click the icon, you can access the "Group

Details" window.



Users Tab



Displays the list of Users assigned to the Agent. In the "Permissions" column, you can see the set of permissions of the current user. And if you click the  icon, you can access the "User Details" window.

