

Editing Disk Safes

Follow the instructions below to change **Disk Safes** in CDP.

1. Click on "Disk Safes" in the Main Menu to access the "Disk Safes" page.



2. In the "Disk Safes" list, find the Disk Safe you need and click on the "Edit" icon in the "Actions" column for this Disk Safe.

	Name	Agent Name	Volume Name				Auto Add		
<input type="checkbox"/>	cPanel	cPanel	Control Panels	23	3	2.9 GB			
<input type="checkbox"/>	DirectAdmin	DirectAdmin	Control Panels	182	2	1.8 GB	<input checked="" type="checkbox"/>		
<input type="checkbox"/>	disk1	win_agent1	Virtuozzo	0	0	3.6 MB	<input checked="" type="checkbox"/>		



Note

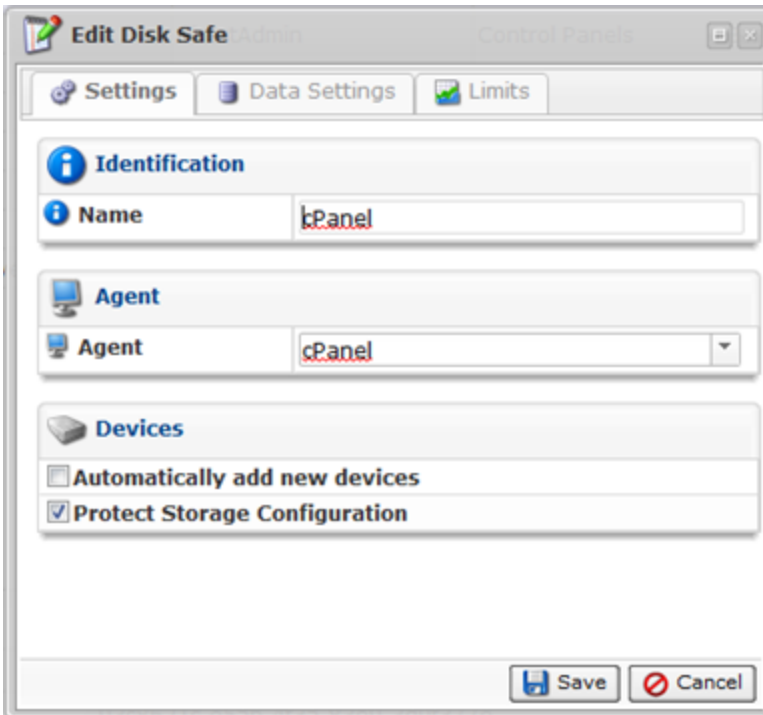
To find a Disk Safe, you can use the Basic and Advanced List Filters. See [Customizing the Disk Safes List](#).



Note

You can also edit several Disk Safes at once. See [Bulk Editing](#) below.

3. The "Edit Disk Safe" window will open.



4. The following tabs are available for editing:

- Settings
- Data Settings
- Limits

See the description of all tabs and their properties in [Creating Disk Safes](#).



Note

You cannot change the Disk Safe location through the CDP Server Interface. See also: [Copying and Moving Disk Safes](#).

5. After you have finished editing, click on "Save" at the bottom of the window to apply the changes.



Bulk Editing

Using the "Edit Selected" button, you can change compression settings of multiple Disk Safes at once. The same values will be set for all selected items. Follow the instructions below.

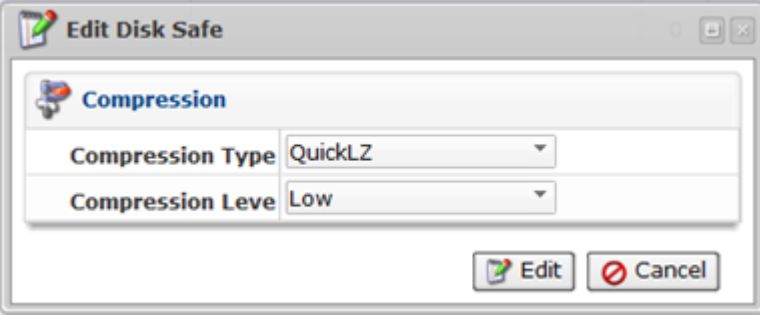
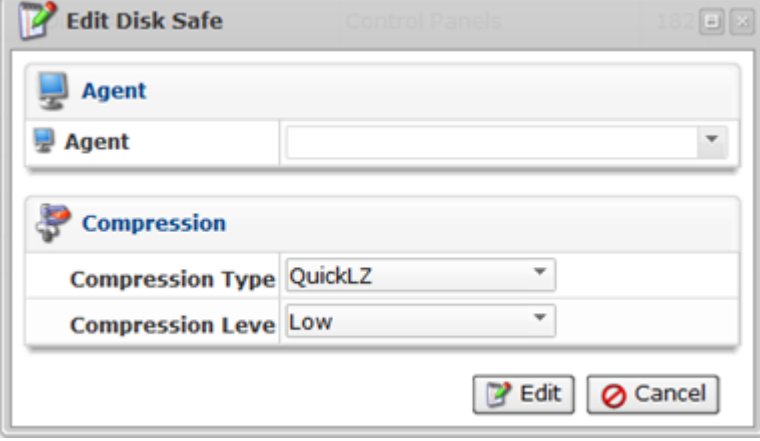
1. Select several Disk Safes by selecting the checkboxes in the first column in the Disk Safes list.

Edit Selected Vacuum Selected Open Selected Close Selected Detach Selected									
<input type="checkbox"/>	Name	Agent Name	Volume Name	<input type="checkbox"/>	<input type="checkbox"/>	<input type="checkbox"/>	Auto Add	<input type="checkbox"/>	<input type="checkbox"/>
<input checked="" type="checkbox"/>	cPanel	cPanel	Control Panels	23	3	2.9 GB	<input type="checkbox"/>	<input type="checkbox"/>	<input type="checkbox"/>
<input checked="" type="checkbox"/>	DirectAdmin	DirectAdmin	Control Panels	182	2	1.8 GB	<input checked="" type="checkbox"/>	<input type="checkbox"/>	<input type="checkbox"/>
<input type="checkbox"/>	disk1	win_agent1	Virtuozzo	0	0	3.6 MB	<input checked="" type="checkbox"/>	<input type="checkbox"/>	<input type="checkbox"/>

2. Click on "Edit Selected" located in the "Disk Safes" list toolbar.

Edit Selected Vacuum Selected Open Selected Close Selected Detach Selected									
<input type="checkbox"/>	Name	Agent Name	Volume Name	<input type="checkbox"/>	<input type="checkbox"/>	<input type="checkbox"/>	Auto Add	<input type="checkbox"/>	<input type="checkbox"/>
<input checked="" type="checkbox"/>	cPanel	cPanel	Control Panels	23	3	2.9 GB	<input type="checkbox"/>	<input type="checkbox"/>	<input type="checkbox"/>
<input checked="" type="checkbox"/>	DirectAdmin	DirectAdmin	Control Panels	182	2	1.8 GB	<input checked="" type="checkbox"/>	<input type="checkbox"/>	<input type="checkbox"/>
<input type="checkbox"/>	disk1	win_agent1	Virtuozzo	0	0	3.6 MB	<input checked="" type="checkbox"/>	<input type="checkbox"/>	<input type="checkbox"/>

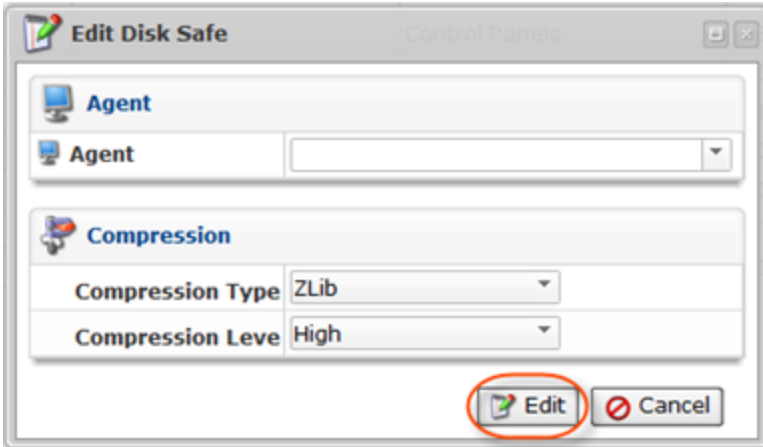
3. The "Edit Disk Safe" window opens.

Standard, Advanced Edition	
Enterprise Edition	

4. In the window, select the following options:

- Agent (**Enterprise Edition**) - Select an Agent to assign to the for the Disk Safe(s).
- Compression Type - Define the type of compression for the Disk Safe(s).
- Compression Level - Choose the level of compression: Low, Medium, High.

5. Click "Edit" to apply the changes to the selected Disk Safes at once.



6. In the "Disk Safes" list, the updated properties will be displayed in the appropriate column(s). In our case, in the "Compression" column, the values are "ZLIB High" and "QuickLZ".

You can also edit Disk Safes using the "Disk Safes" tab of the Agent "Details" Pane. This screen provides the same functionality as the main "Disk Safes" screen. See more information in [Accessing Agents](#).