

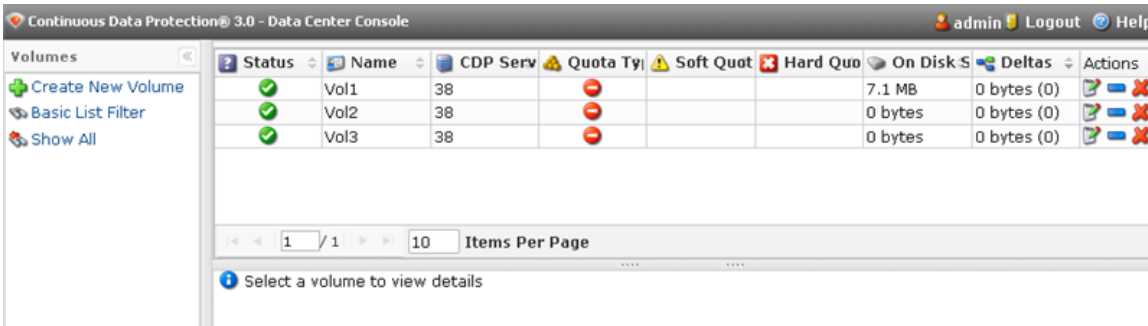
Editing Volumes in Data Center Console

It is possible to edit Volumes on CDP servers using the Data Center Console. Follow the instructions below.

1. Select Volumes from the Main Menu.

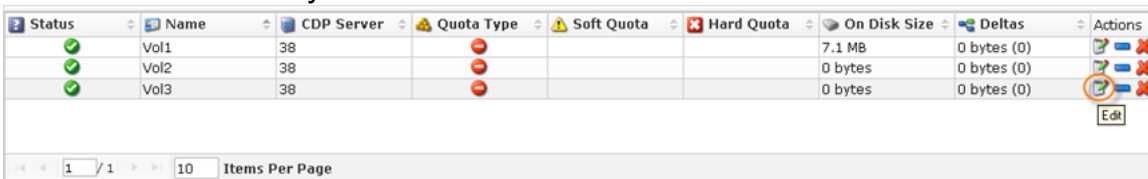


You will enter the "Volumes" screen.

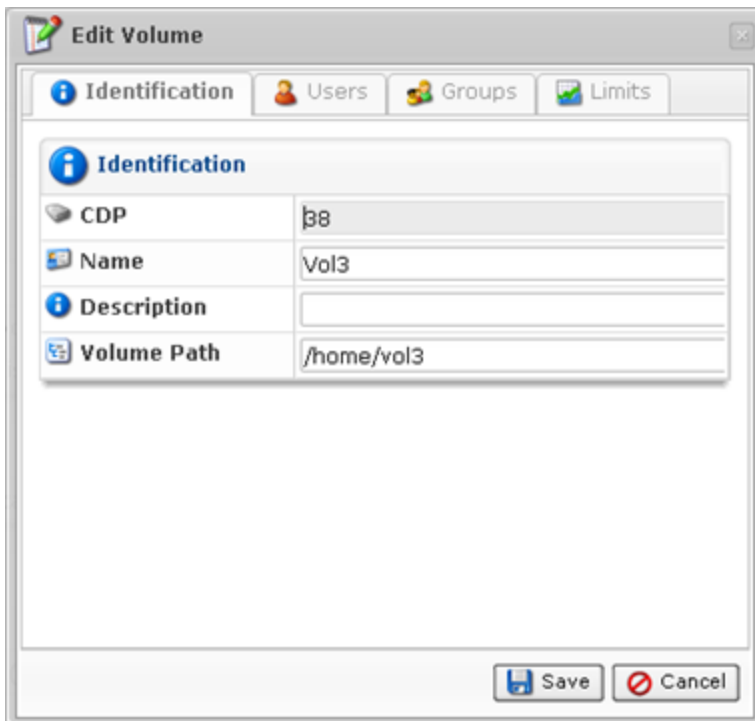


The list of all Volumes from all connected CDP Servers is displayed.

2. Select the Volume you want to edit and click the "Edit" icon.



3. The "Edit Volume" window will open.



You can edit the following tabs:

- Identification
- Users
- Groups
- Limits

See [Creating Volumes in Data Center Console](#) for the information about every tab.

4. Once the changes are complete, click "Save."

