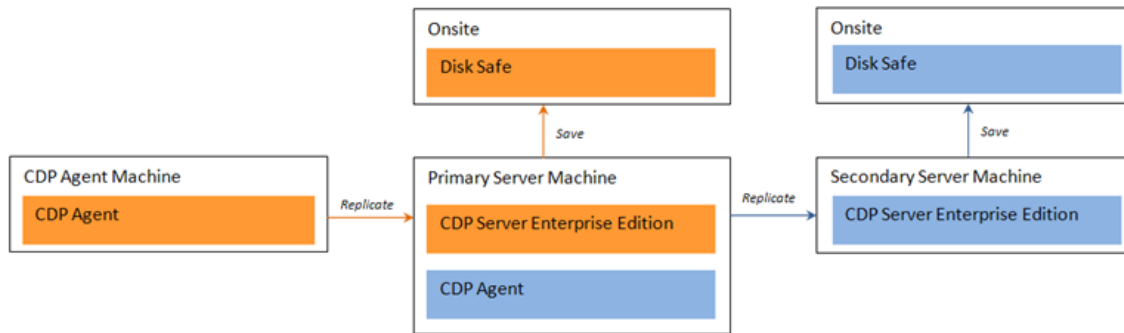


Setting up Onsite Multi-Point Replication

This topic provides instructions on how to set up onsite [Multi-Point Replication](#) for your CDP Server Enterprise Edition based on the following scheme.



Follow the instructions below.

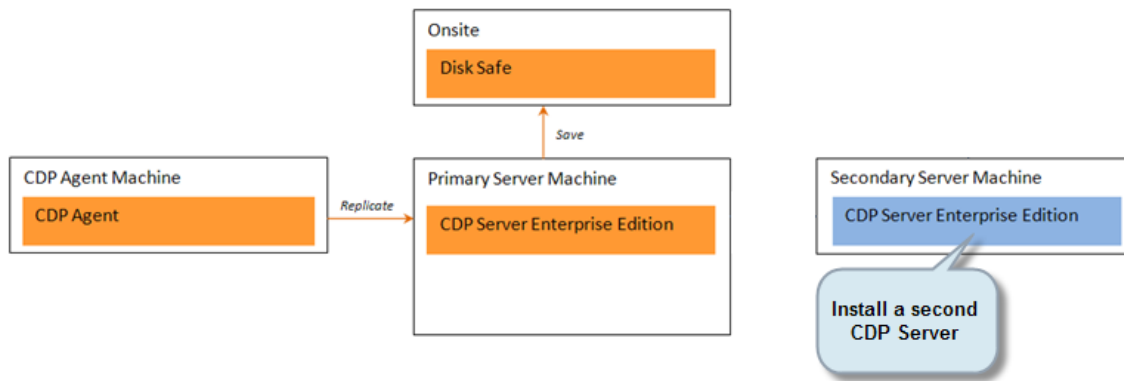
Step 1 - Obtain additional CDP Agent license per CDP Server | Step 2 - Install a second CDP Server | Step 3 - Install an Agent on the primary CDP Enterprise Server | Step 4 - Add the Agent to the second CDP Server | Step 5 - Create working environment | Step 6 - Configure the replication schedule

Step 1 - Obtain additional CDP Agent license per CDP Server

If you want to perform offsite backups, you need to have an additional CDP Agent license per CDP Server you are going to make replicas/copies of. Read more in [Getting Technical Support & Licensing](#).

Step 2 - Install a second CDP Server

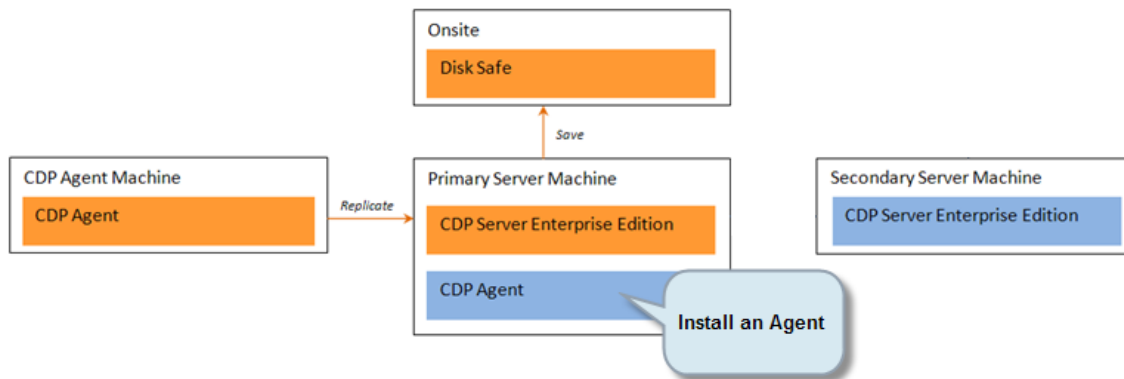
Install a second CDP Server (onsite or offsite). See [Installing Enterprise Edition on Linux](#), [Installing Enterprise Edition on Windows](#).



Step 3 - Install an Agent on the primary CDP Enterprise Server

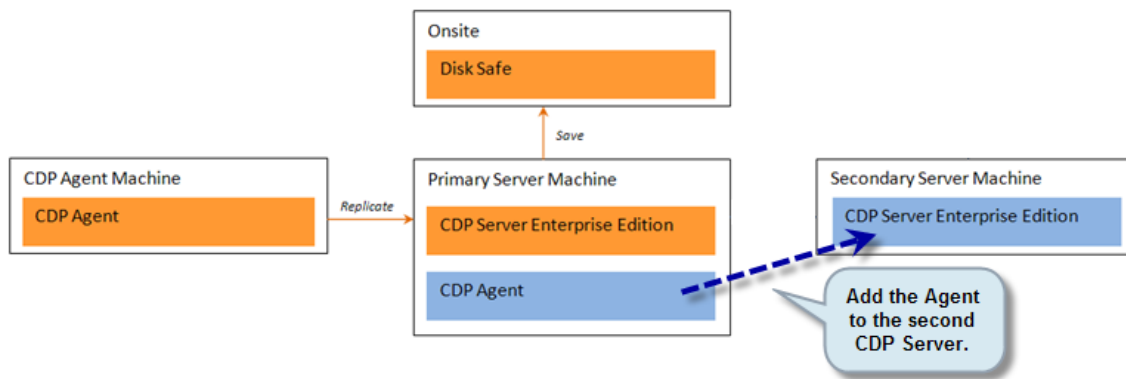
Install an Agent on the primary CDP Enterprise Server. For instructions, refer to [Installing Agent on Linux](#), [Installing Agent on Windows](#).

After the machine reboots, the installation is complete.



Step 4 - Add the Agent to the second CDP Server

Add the newly-installed Agent to the second CDP Server and activate the Agent. See [Adding the Agent to the CDP Server](#), [Adding the Server Key to Linux Agent](#), [Adding the Server Key to Windows Agent](#).



In our example, we added the installed Agent to the second CDP Server. The Agent name is "cpanel." Once the Agent is added to the second CDP Server, it is listed on the "Agents" screen.

The screenshot shows the **Agents** screen in the R1Soft Continuous Data Protection 3.0 - Enterprise Edition interface. The table below lists the agents:

Name	Host Name/IP	Port Number	OS Type	Add-ons
cpanel	10.230.200.33	1167	Linux	
plesk	10.230.104.11	1167	Linux	
virtuozzo	10.230.200.21	1167	Linux	
mysql	10.230.102.116	1167	Linux	
10.230.100.234	10.230.100.234	1167	Linux	
Core-10.230.100.141	10.230.100.141	1167	Windows	

The **Agent Details for cpanel** section is expanded, showing the following information:

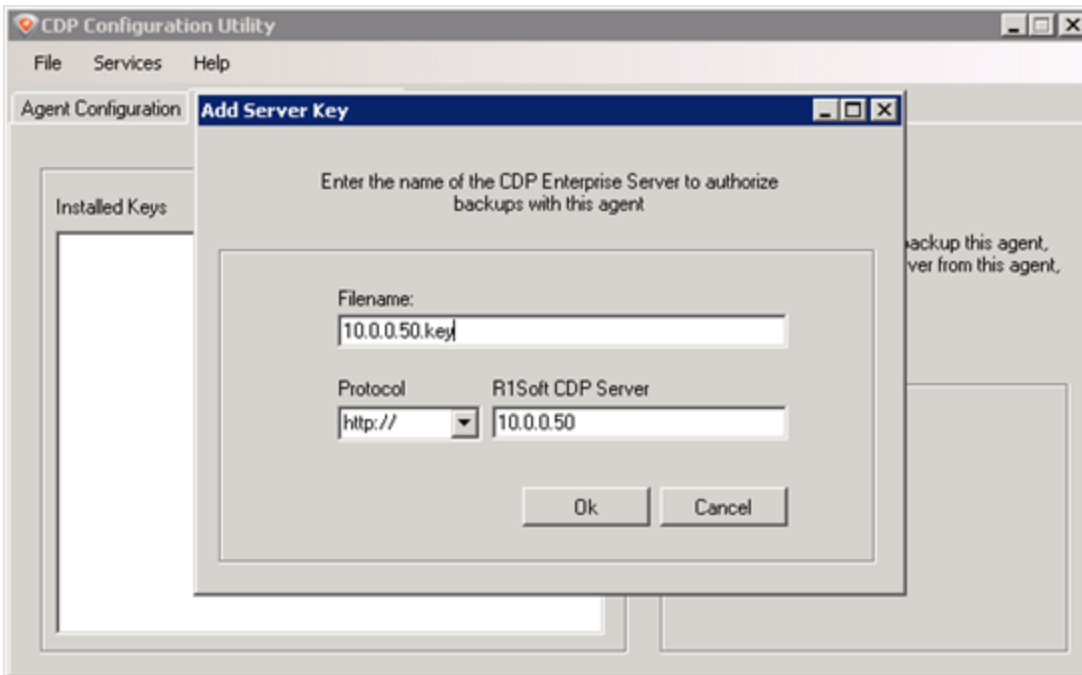
Identification

- Name: cpanel
- Host Name/IP: 10.230.200.33
- Port Number: 1167

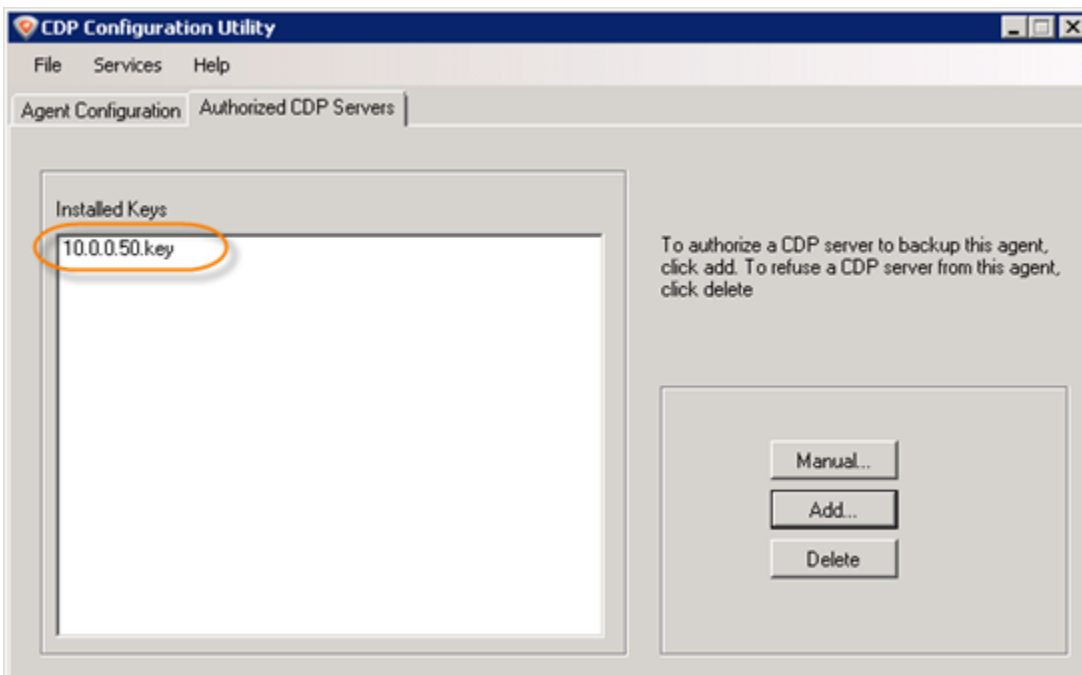
Statistics

- Disk Safes: 2
- Groups: 1
- Users: 3

Below, we added the Server Key to the Agent using the Windows CDP Agent Configuration Utility. To do this, select the "Authorized CDP Servers" tab. > Click the "Add..." button. > Enter the Filename, Protocol, and R1Soft CDP Server IP. > Click "Ok."



Once the key is added, it appears on the "Authorized CDP Servers" tab, as pictured below.

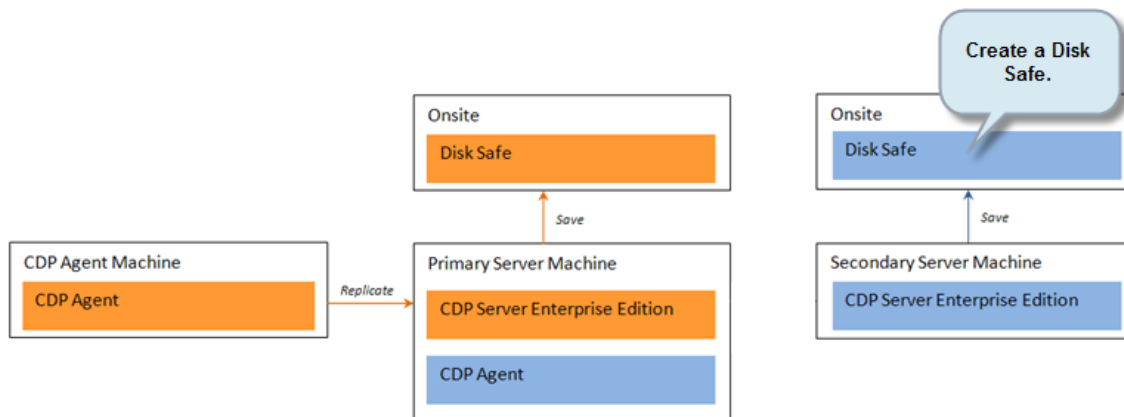


Step 5 - Create working environment

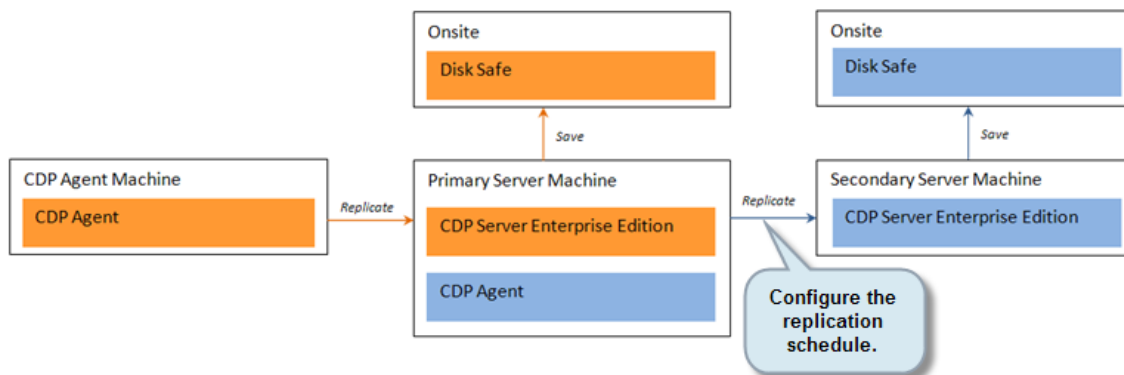
Set up the Users, User Groups, Volumes, and Disk Safes in the second CDP Server. See [Adding Users](#), [Adding Groups](#), [Creating Volumes](#), [Creating Disk Safes](#).

**Tip**

If the secondary server machine is located remotely, you can first create an initial replica on the primary server machine and then move the Disk Safe to the secondary server machine. You can find instructions in [Setting up Remote Multi-Point Replication](#).

**Step 6 - Configure the replication schedule**

Configure the replication schedule on the secondary CDP Enterprise Server to protect the primary CDP Enterprise Server. See [Creating Policies](#).



In the following image, you can see that we selected the Agent called "cpanel" when creating the Policy on the second CDP Enterprise Server.

Create New Policy

Policy Settings | Advanced Policy Settings | File Excludes | Advanced Excludes | Archiving | Databases | Control Panels

Identification

- Enabled:
- Name: Create Multipoint Backup
- Description: Initial backup

Disk Safe

- Agent: cpanel
- Disk Safe: DS dev2

Frequency

- Frequency Type: Hourly
- Starting Minute: 0

Recovery Point Retention

- Recovery Point Limit: 10

Create Cancel