

Installing Standard Edition on Windows

The Server installer is a typical Windows installer application. Follow the instructions given below to install CDP 4.2 Standard Edition (Stable).



Note

New in version 4.2. Windows installers will support English, Japanese, and Spanish. End-users cannot add installation support for additional languages. The language chosen during the installation will not become the CDP Server's default user language.

1. Log on to the Windows server as a member of the local Administrators group.
2. Navigate to the directory where you saved the CDP Server installation file. The installer will have the following attributes:

For a 32-bit system:

- File name - R1Soft-StandardEdition-win32.zip
- File size - 138 MB

For a 64-bit system:

- File name - R1Soft-StandardEdition-win64.zip
- File size - 157 MB



See Also

[Checking Windows Bit Version](#) - Instructions on how to determine whether a computer is running a 32-bit version or a 64-bit version of the Windows operating system.

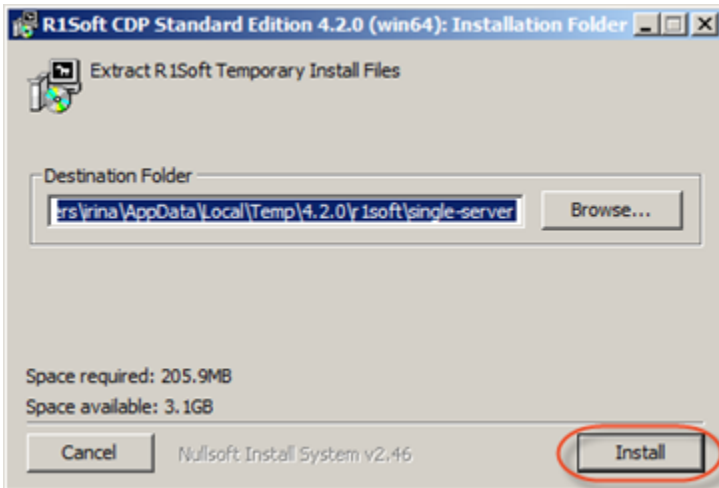


Note

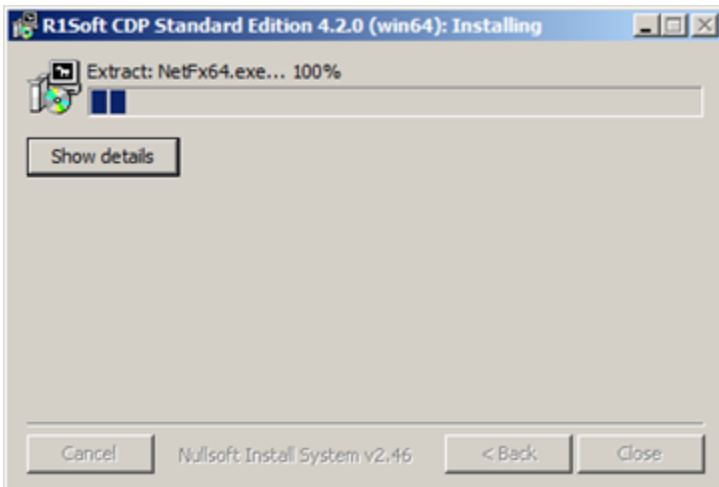
R1Soft products follow this format for version numbers: MAJOR.MINOR.MAINTENANCE. Pre-release downloads ALWAYS have a version number that has an ODD MINOR number, e.g., 3.7.5. Stable downloads ALWAYS have a version number with an EVEN MINOR number, e.g., 3.8.1.

3. Extract the file from the archive. Execute the file.

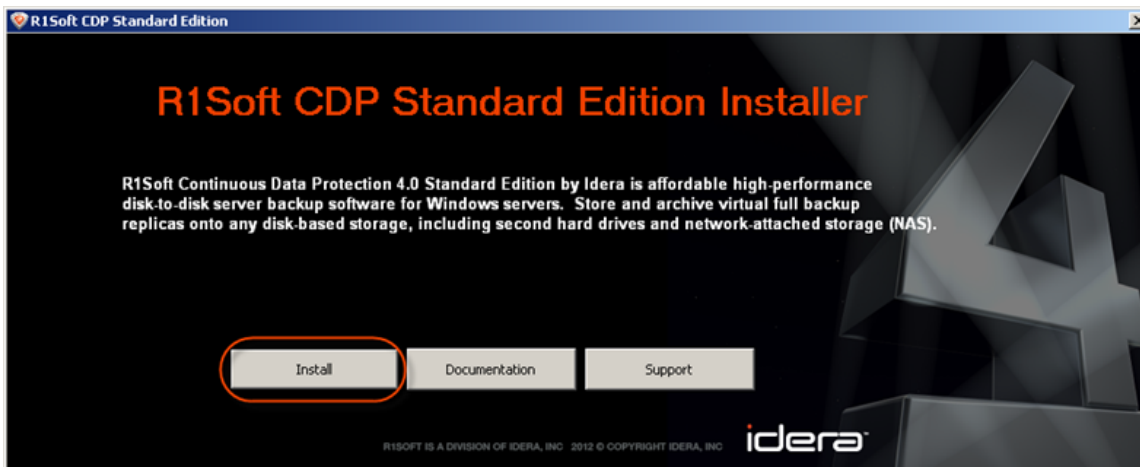
4. In the Welcome window, select a destination folder and click "Install."



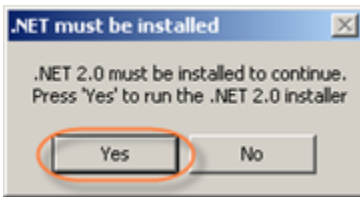
5. Wait while the files are extracted.



6. Click "Install" in the opened window.

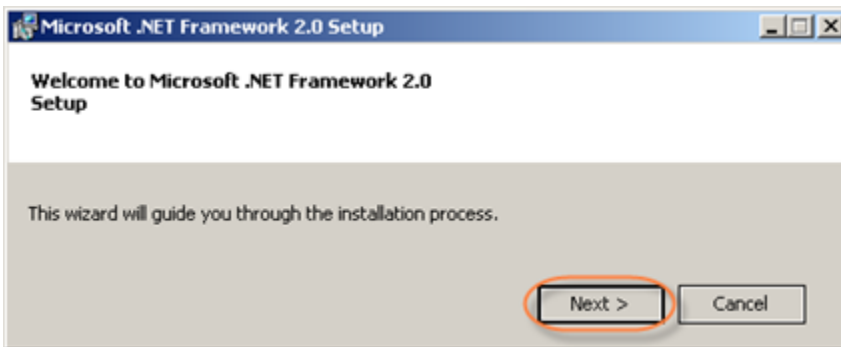


7. If Microsoft .NET Framework 2.0 is not already installed on your PC, you will be asked to install it. Click "Yes."

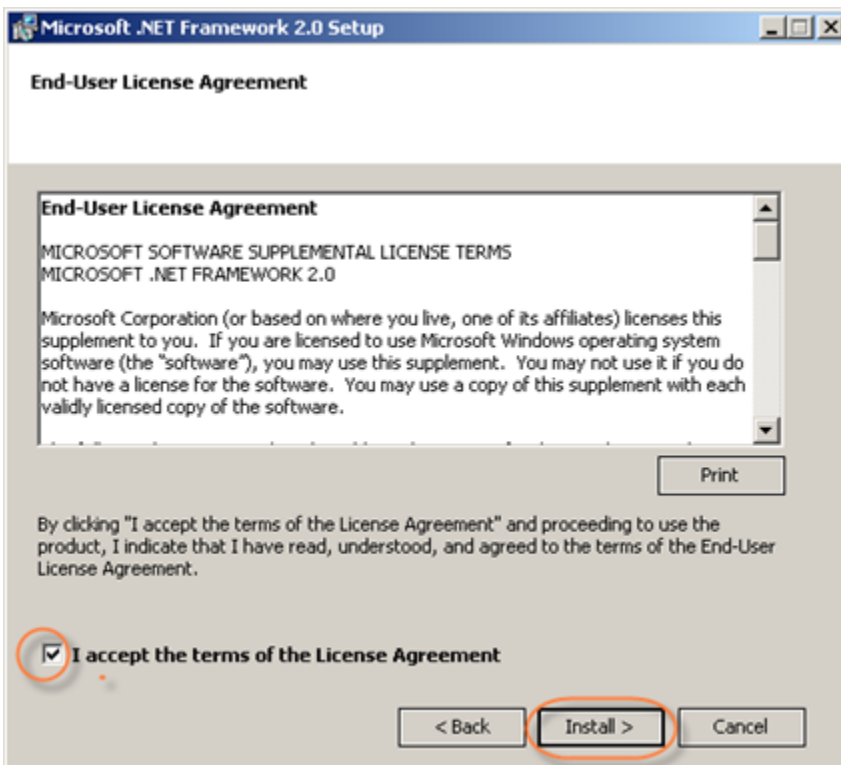


If Microsoft .NET Framework 2.0 is installed, go to Step 12.

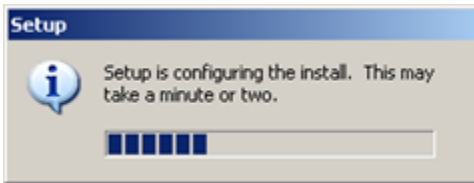
8. Click "Next" to start Microsoft .NET Framework 2.0 setup.



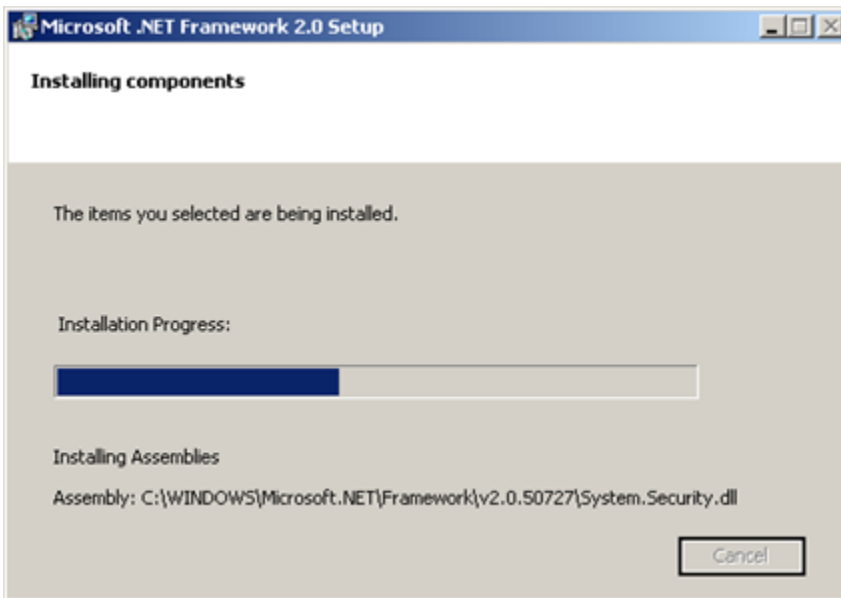
9. The next screen will display the "End-User License Agreement." Read it to the end, select the "I accept ..." check-box, and then click "Install."



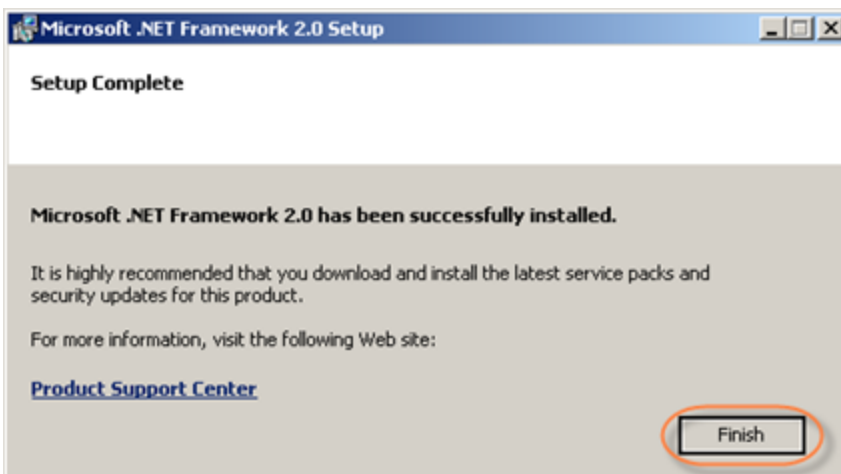
10. You will see a progress bar notifying you that the Setup is configuring the installation.



Wait while the components are installed.



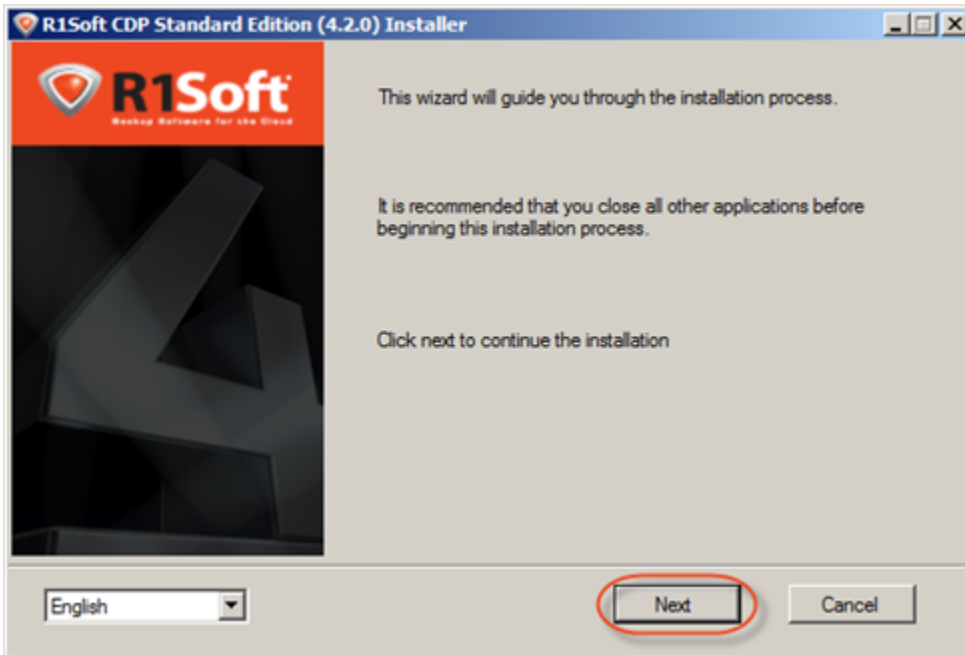
The system will inform you once the process is complete. Click "Finish" to close the ".NET Setup" window.



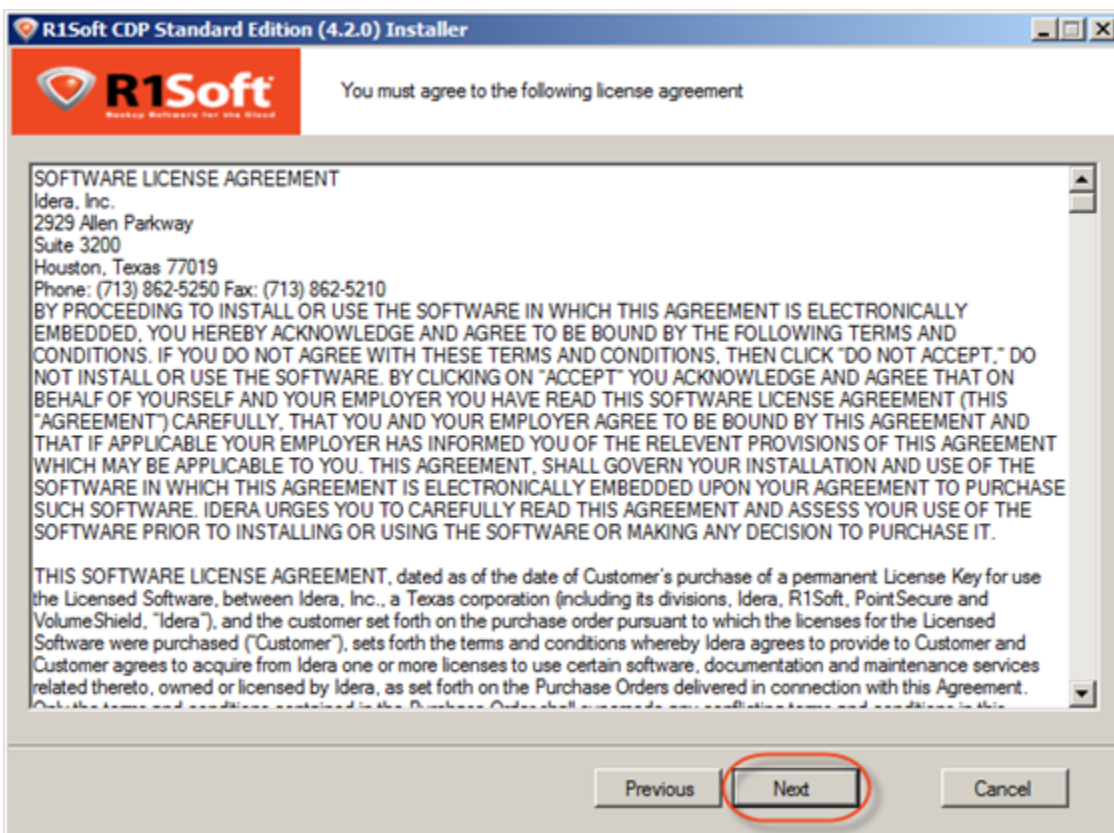
11. Once Microsoft .NET Framework is installed, you will be returned to Step 6 where you must choose between "Install CDP Server" and "Install CDP Agent." Click "Install CDP Server."

12. The R1Soft CDP Standard Edition Installer will open. Make sure all other applications are

closed and click "Next."

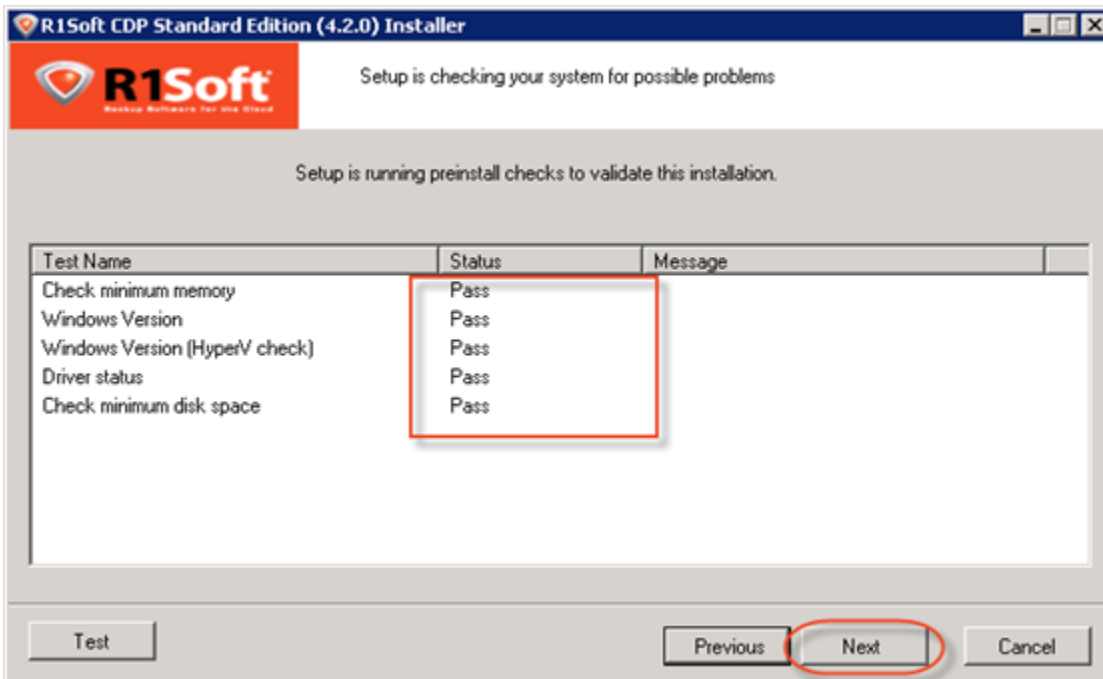


14. You must agree to the following license agreement. Read it to the end and click "Next" to accept.



15. The installer will check your system for possible problems. It is strongly recommended that all

tests have a "Pass" status. You can repeat the tests by clicking the "Test" button. Click "Next" to go to the next screen.



Note

You can find the full list of requirements here:

<http://www.r1soft.com/windows-cdp/cdp-standard-edition/requirements/>.



Note

If one or several requirements are not met, then an explanation will be displayed in the "Message" column. For such configurations, further installation is not recommended.

Test Name	Status	Message
Check minimum memory	Pass	
Windows Version	Pass	
Windows Version (HyperV check)	Pass	
Driver status	Pass	
Check minimum disk space	Not Recommended	Insufficient disk space to store backup data

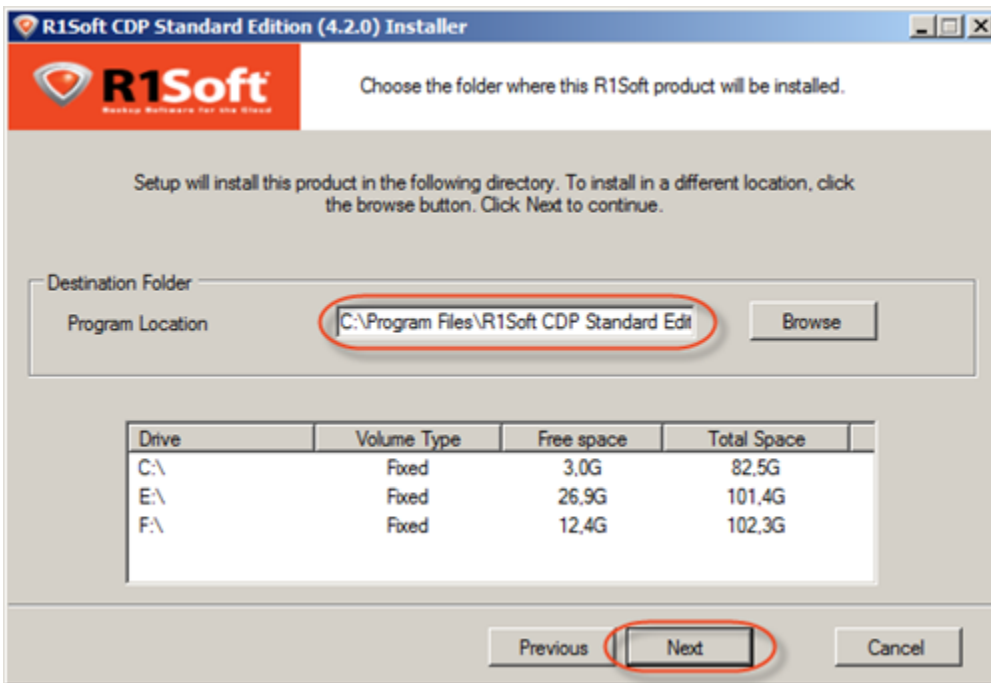
Possible values in the "Status" column are "Pass," "Not Recommended," and "Fail."

If possible, correct the configuration and click "Test" again.

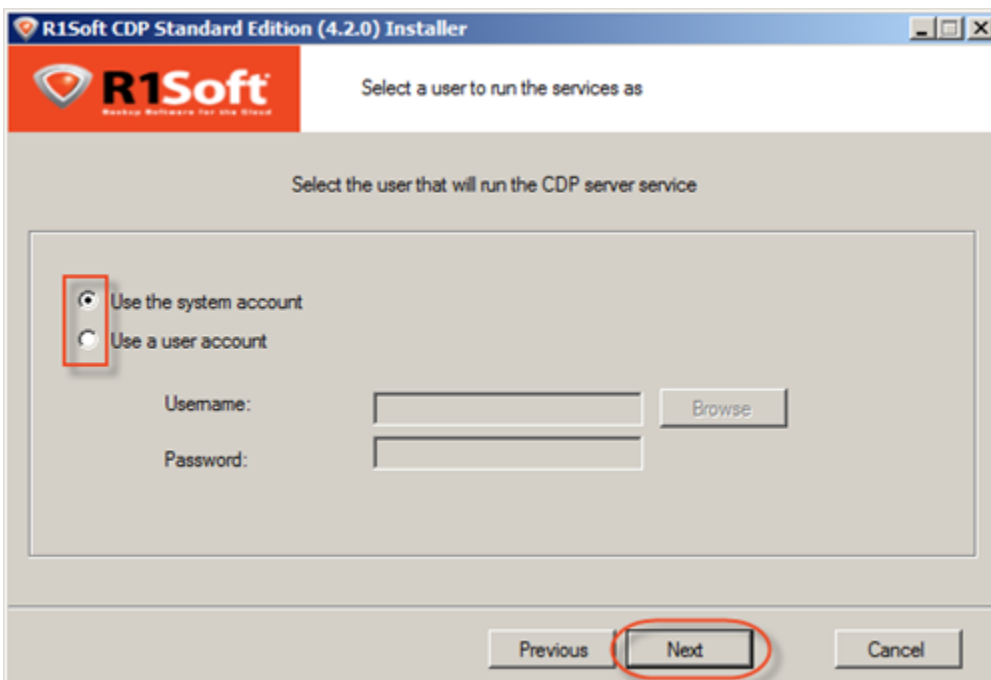
16. On the next screen, choose the installation directory for the Server. It is safe to leave the

default location untouched. However, you can install the Server to another directory if, for example, you do not have enough free space on disk C.

Click "Next" to continue.



17. The "User Setup" window will load. You will be prompted to select the user you want to run the CDP Server as. By default, the "system account" is selected. It is safe to leave the default value untouched. The only exception is when you want to run the Server on behalf of a Domain User that has local administrative rights. Make your selection and click "Next."



**Note**

If you are going to store Disk Safes at a network share, make sure the selected user has permission to write to the network share. See also: [Error - Could Not Create Disk Safe Directory](#) (CDP Server Knowledge Base).

**Note**

The user account can be changed using the CDP Configuration Utility. See [Configuring CDP Server "Run Service As" Account](#).

18. Verify HTTP and HTTPS ports for the CDP Server Interface to run on. Edit these fields if necessary. Click "Next."

R1Soft CDP Standard Edition (4.2.0) Installer

Select a port for the CDP Server interface

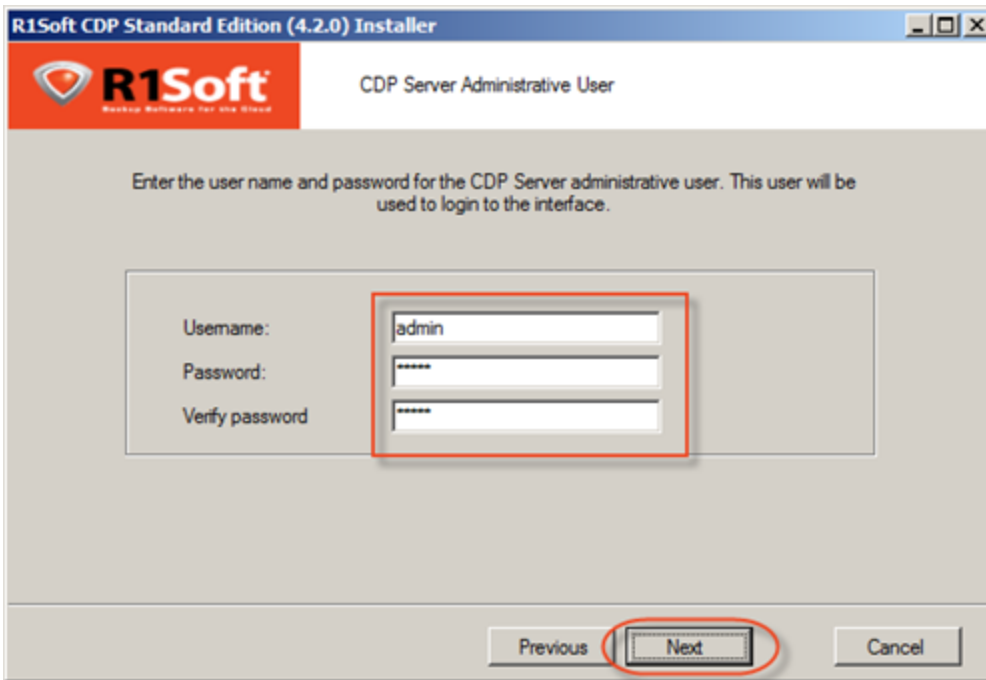
Enter a port for the CDP Server interface to run on

HTTP Port: 81

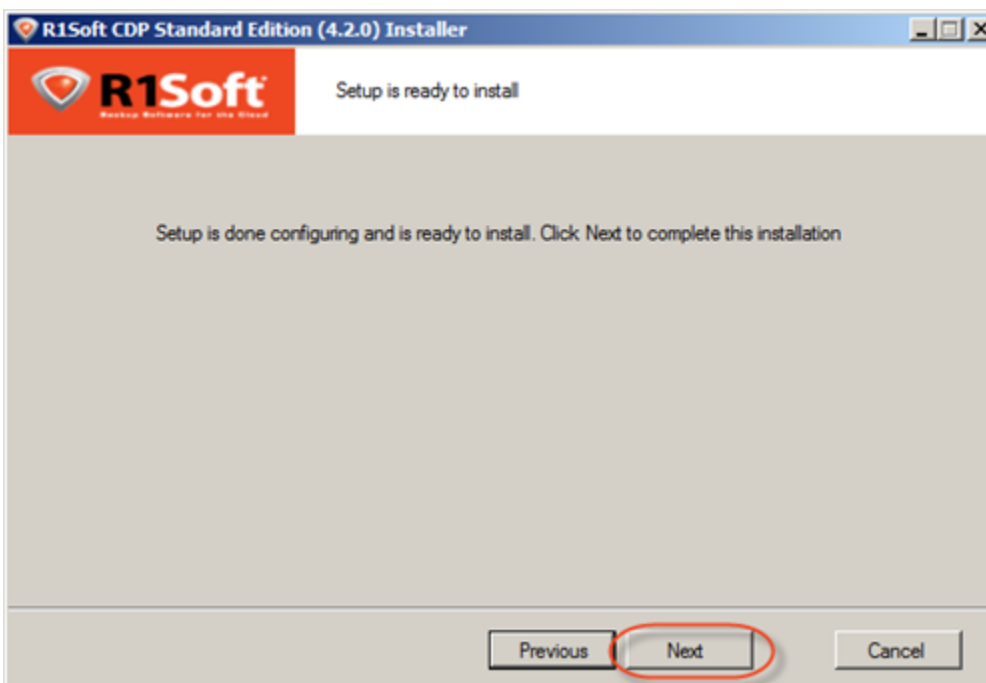
HTTPS Port: 444

Previous Next Cancel

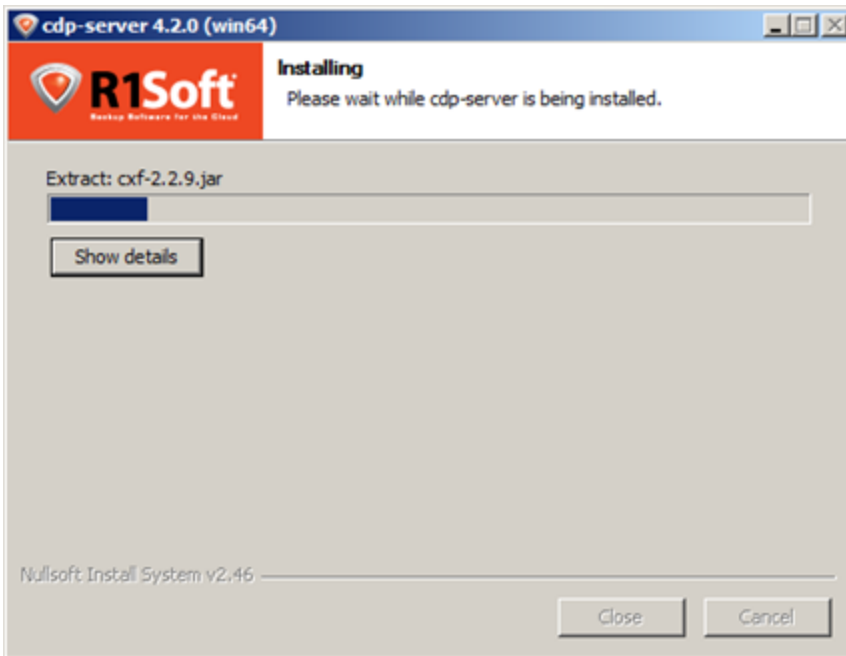
19. Next, you need to set the administrator's login credentials. The user name "admin" and the password that you select will be used to access the CDP Server via the Web Interface. The password characters will be replaced by asterisks (*) on the screen. Click "Next."



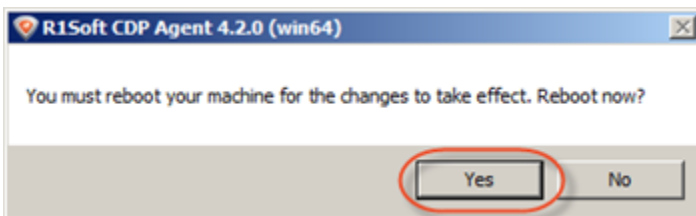
20. The configuration is complete. Click "Next" to start the installation process.



21. The installation process will start.



22. To finish the installation, you will need to reboot your PC. Click "Yes" in the displayed window.



Proceed to the next steps:

- Using Standard Edition Dashboard
- Creating Disk Safes