

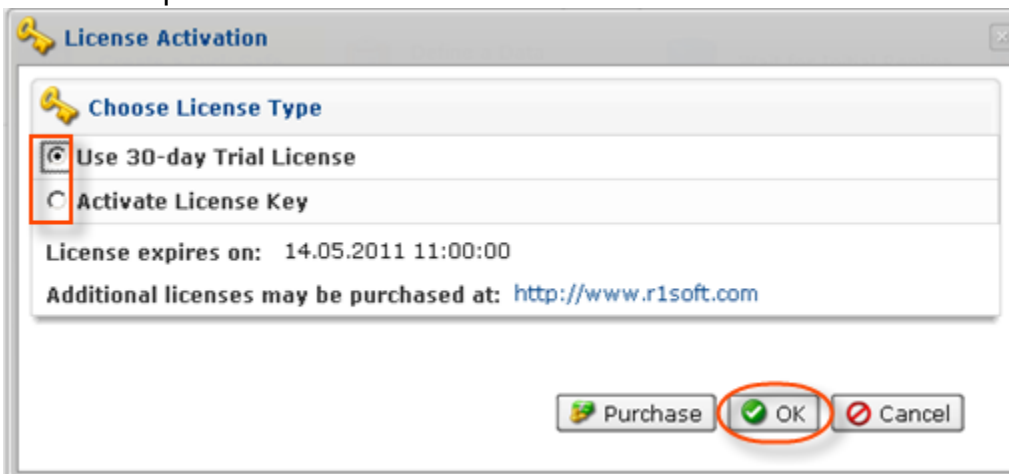
Activating CDP Standard Edition

After your first login to the CDP Server via the Web Interface, you should activate the server. Follow the instructions below.

1. After your first login, the "License Activation" dialog is displayed. It allows you to select one of the following options:

- Use 30-Day Trial License
- Activate License Key

Select an option and click "OK."



Note

The "License Activation" dialog window is NOT displayed if Standard Edition is running on a free license.

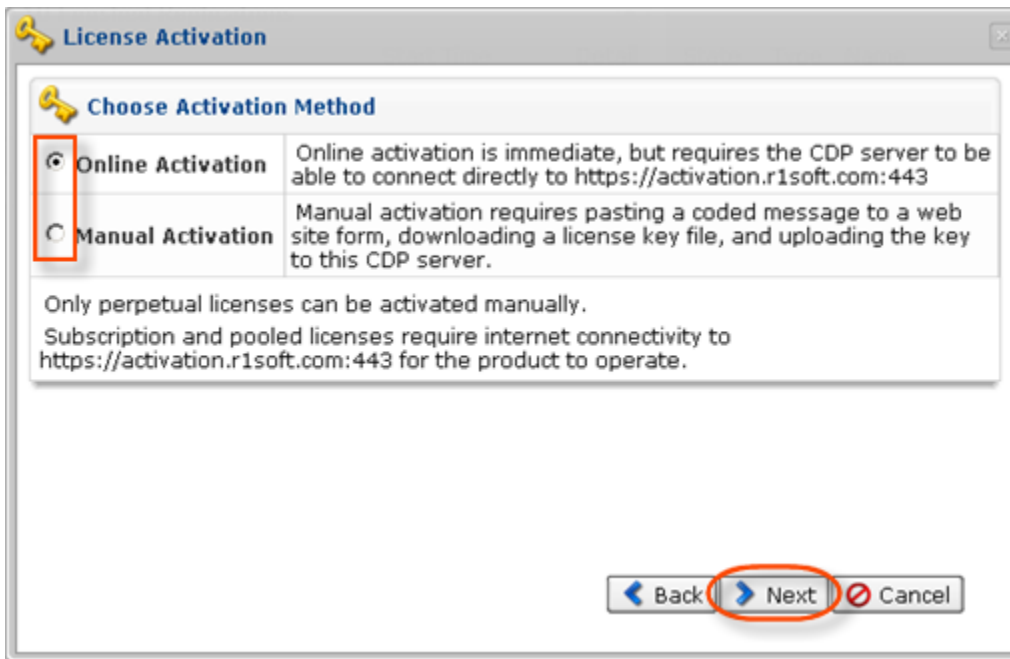
2. If you select the "Activate License Key" option, the next dialog offers you the following activation options:

- Online activation - Online activation is automatic and requires the computer with R1Soft CDP installed to connect directly to <https://activation.r1soft.com:443>.
- Manual activation - Manual activation requires you to paste a coded message to a website form, download the license key file, and then upload it to this CDP installation.

**Note**

Only perpetual licenses can be activated manually. Subscription and pooled licenses require Internet connectivity to <https://activation.r1soft.com:443> for the product to operate.

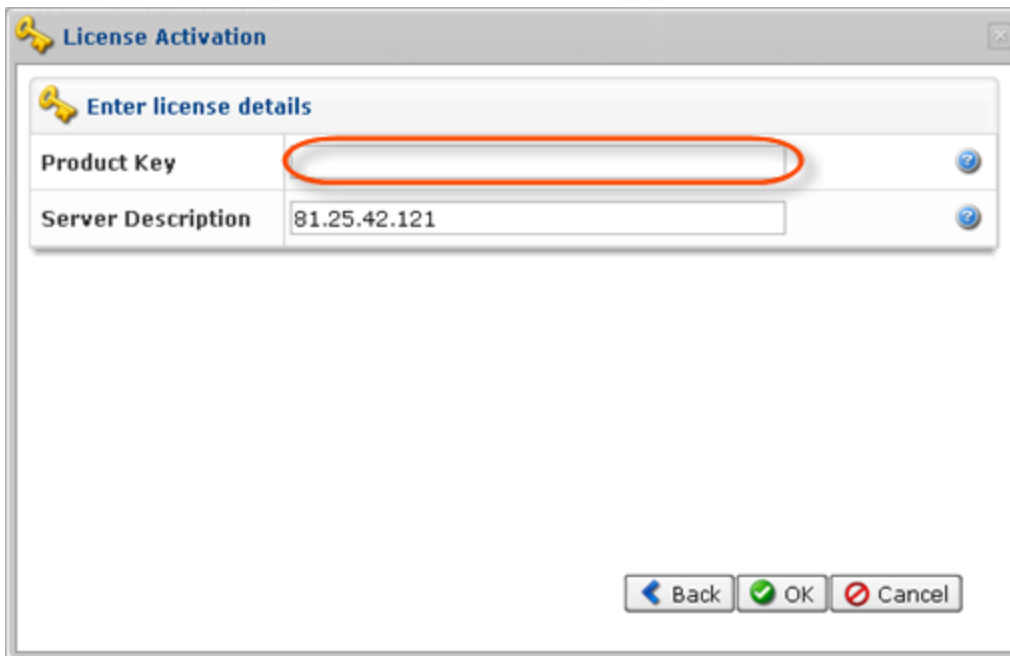
Select an option and click "Next."



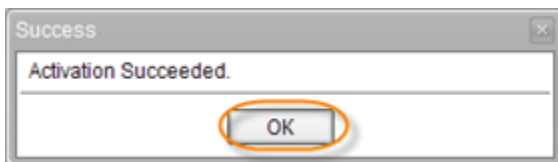
3. The next screen will prompt you for the Product Key. Enter the Product Key you received from the R1Soft sales team in the "Product Key" text box on the "License Activation" screen. You can enter an optional server description in the "Server Description" text box.

- **Product Key** - This is the 36-character product activation code (looks like "xxxxxxxx-xxxx-xxxx-xxxx-xxxxxxxxxxxx"). It is best to copy and paste this code into the form. The Product Key cannot be empty for online/manual activation.
- **Server Description** - The server description is any text string. It is recorded with the license only for your records and to help you identify this license activation if you have multiple licenses.

Click "OK."

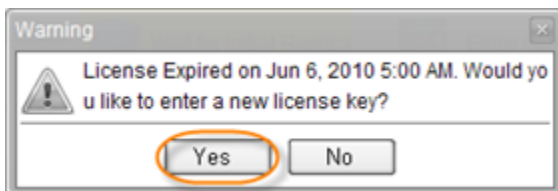


4. You will then receive a confirmation of successful activation. Click "OK."



5. Your license is now activated. The CDP Server redirects you to the Web Interface.

If you select the "Start 30 day trial period" option, CDP functionality is available to you for 30 days, without limitations. Once the trial period has ended, you cannot start Policies, and you will receive a warning message.



Click "Yes" to enter the license key and restore all functions. Then see the current document from Step 2.

If Standard Edition does not have a valid license key, then a perpetual free license key that never expires is generated. On the [Dashboard](#) above the main navigation screen, the "Download now" button is displayed.



Notes

- Free licenses never show up on or involve the license server.
- Free licenses are indicated as "Free" in the "[License Information](#)" screen.
- If you are running a trial license in 4.0.1 or an earlier version, it stays a trial (not a perpetual free license).
- If you are installing 4.2.0 on a new installation, you automatically get a perpetual free license.
- If you are running 4.0.1 or an earlier version on a paid license and upgrade, there are no changes.