

Installing Enterprise Edition on Windows Manually

The Server installer is a typical Windows installer application. Once you have [obtained the CDP Enterprise Edition installation file](#), follow the instructions given below to install CDP Server 4.2 Enterprise Edition. You can find the instructions on how to install CDP Agent 4.2 in [Installing Agent on Windows](#) and [Installing Agent on Linux](#).

Note

New in version 4.2. Windows installers will support English, Japanese, and Spanish. End-users cannot add installation support for additional languages. The language chosen during the installation will NOT become the CDP Server's default user language.

1. Log on to the Windows server as a member of the local Administrators group.
2. Navigate to the directory where you saved the CDP installation file. The installer will have the following attributes:

For a 32-bit system:

- File name - R1Soft-EnterpriseEdition-win32.zip
- File size - 297 MB

For a 64-bit system:

- File name - R1Soft-EnterpriseEdition-win64.zip
- File size - 316 MB

See Also

[Checking Windows Bit Version](#) -

Instructions on how to determine whether a computer is running a 32-bit version or a 64-bit version of the Windows operating system.

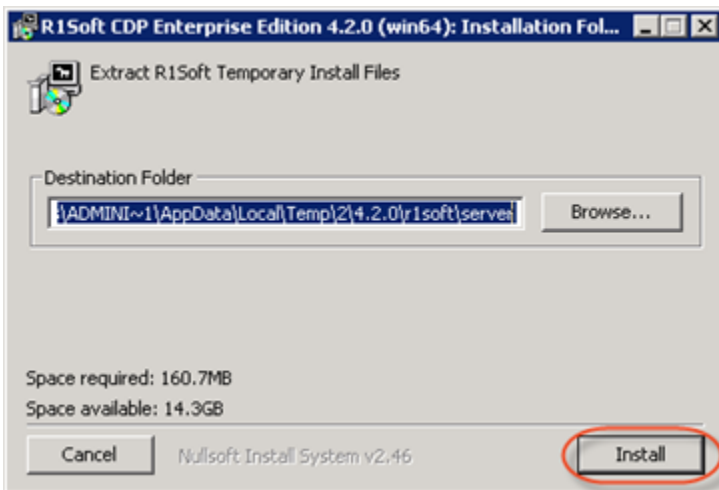
Note

The "Enterprise Edition" installer package is capable of installing both Server and Agent software. The "Enterprise Agent" installer package contains only the Agent software and is a much smaller package.

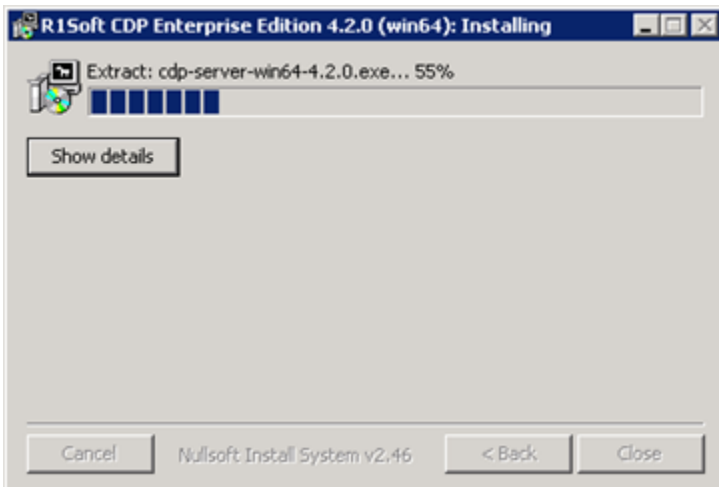
**Note**

R1Soft products follow this format for version numbers: MAJOR.MINOR.MAINTENANCE. Pre-release downloads ALWAYS have a version number that has an ODD MINOR number, e.g., 3.7.5. Stable downloads ALWAYS have a version number with an EVEN MINOR number, e.g., 3.8.1.

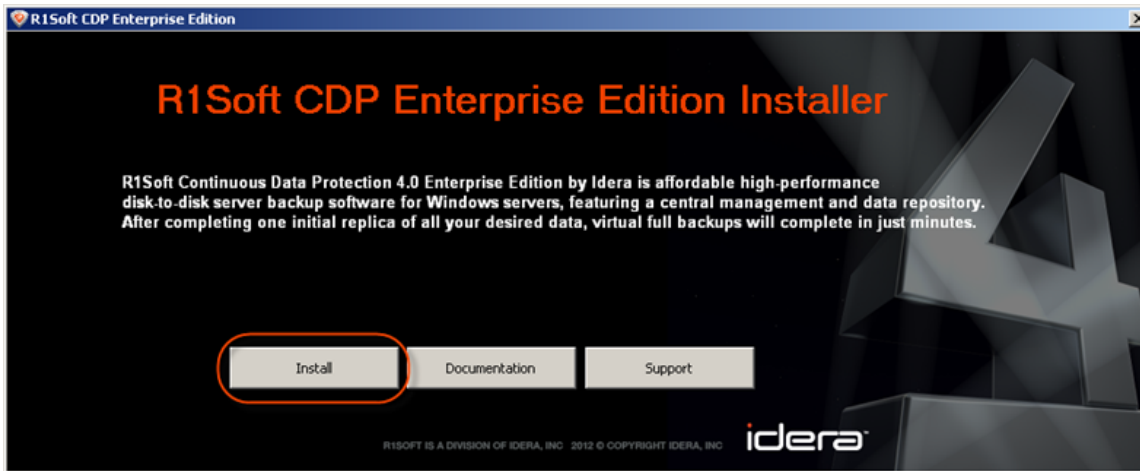
3. Extract the file from the archive. Execute the installer by clicking "Run."
4. In the Welcome window, select a destination folder and click "Install."



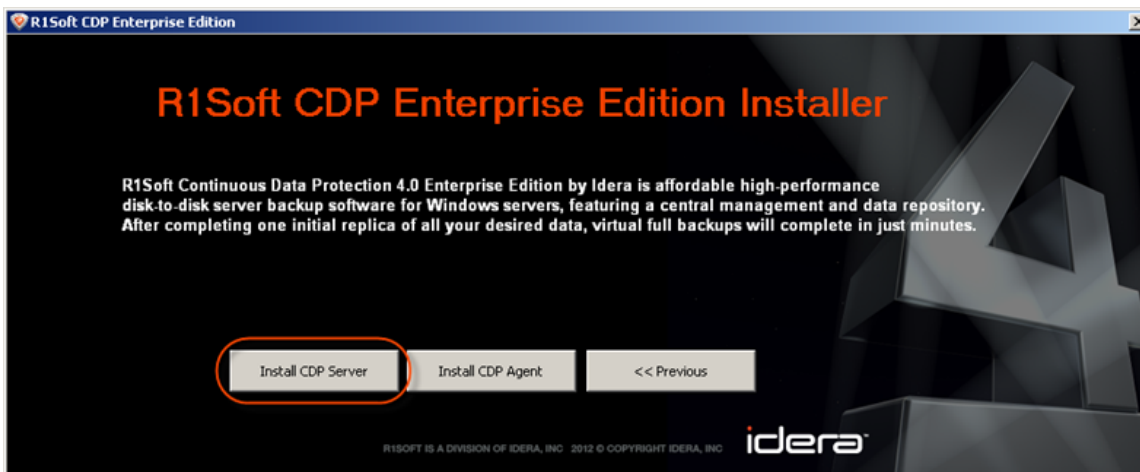
5. Wait while the files are extracted.



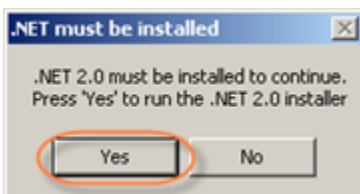
6. Click "Install" in the opened window.



7. Click "Install CDP Server."

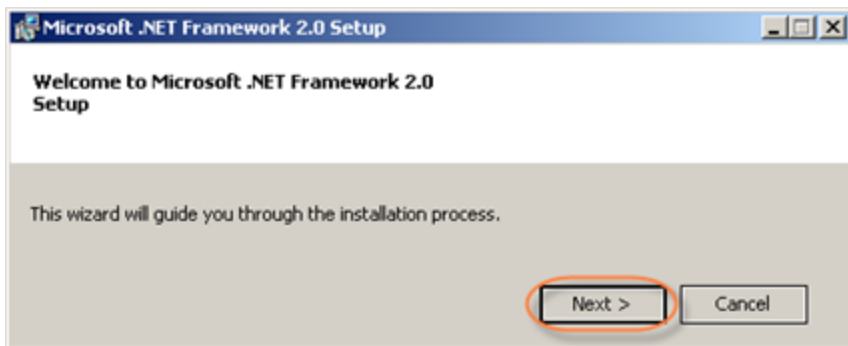


8. If Microsoft .NET Framework 2.0 is not already installed on your PC, you will be asked to install it. Click "Yes."

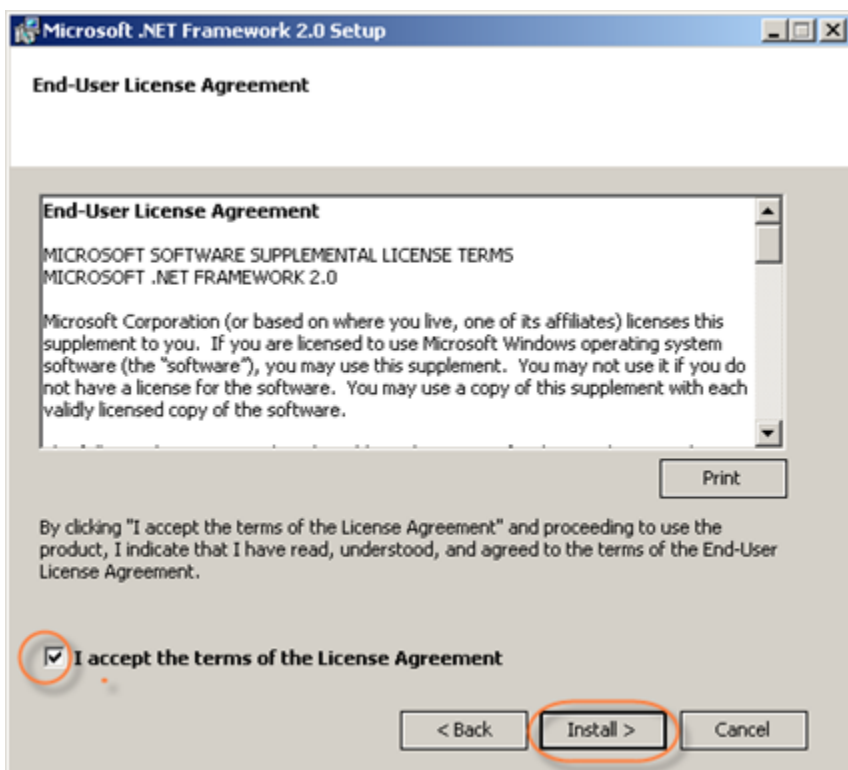


If Microsoft .NET Framework 2.0 is installed, go to Step 13.

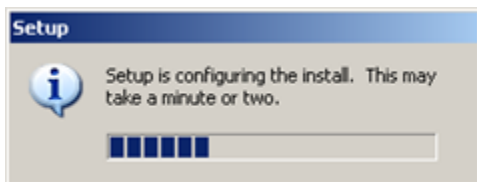
9. Click "Next" to start Microsoft .NET Framework 2.0 setup.



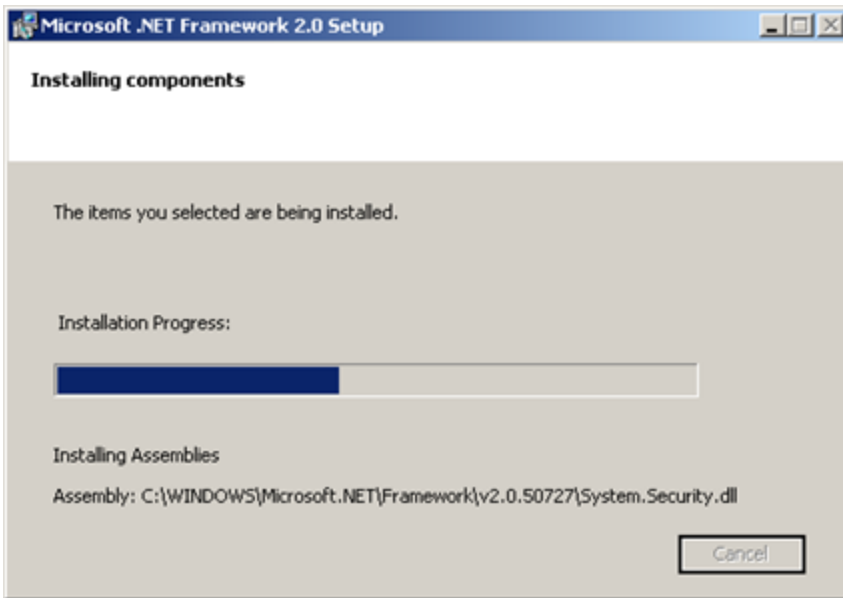
10. The next screen will display the "End-User License Agreement." Read it to the end, select the "I accept ..." check-box, and then click "Install."



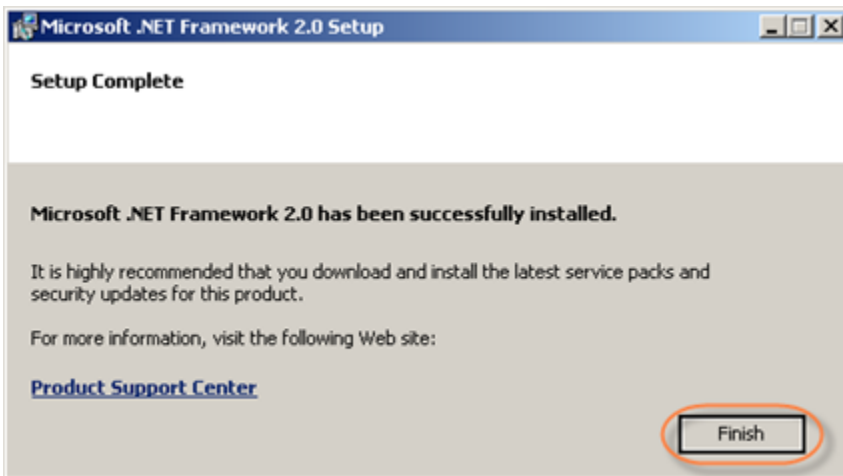
11. You will see a progress bar notifying you that the Setup is configuring the installation.



Wait while the components are installed.

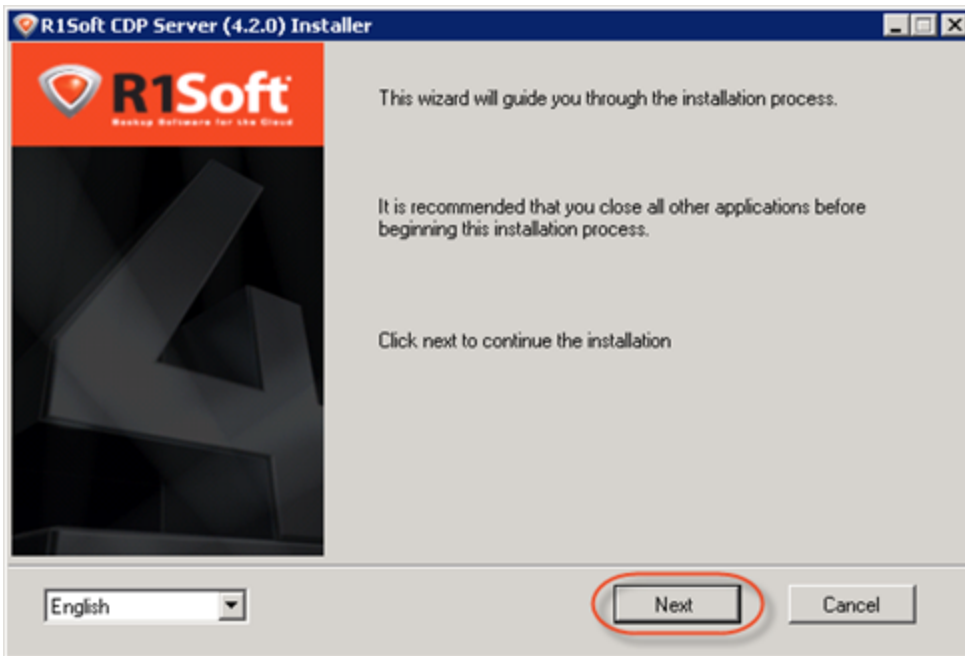


The system will inform you once the Setup is complete. Click "Finish" to close the ".NET Setup" window.

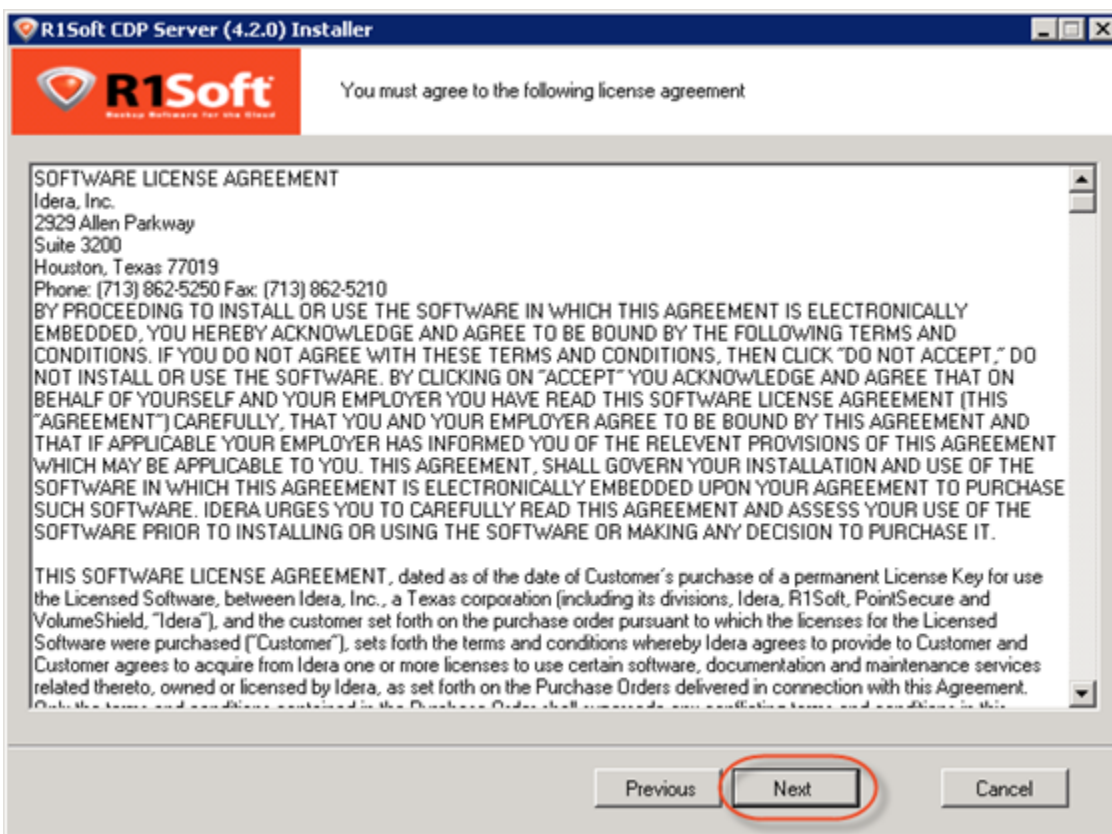


12. Once Microsoft .NET Framework is installed, you will be returned to Step 7, where you must choose between "Install CDP Server" and "Install CDP Agent." Click "Install CDP Server."

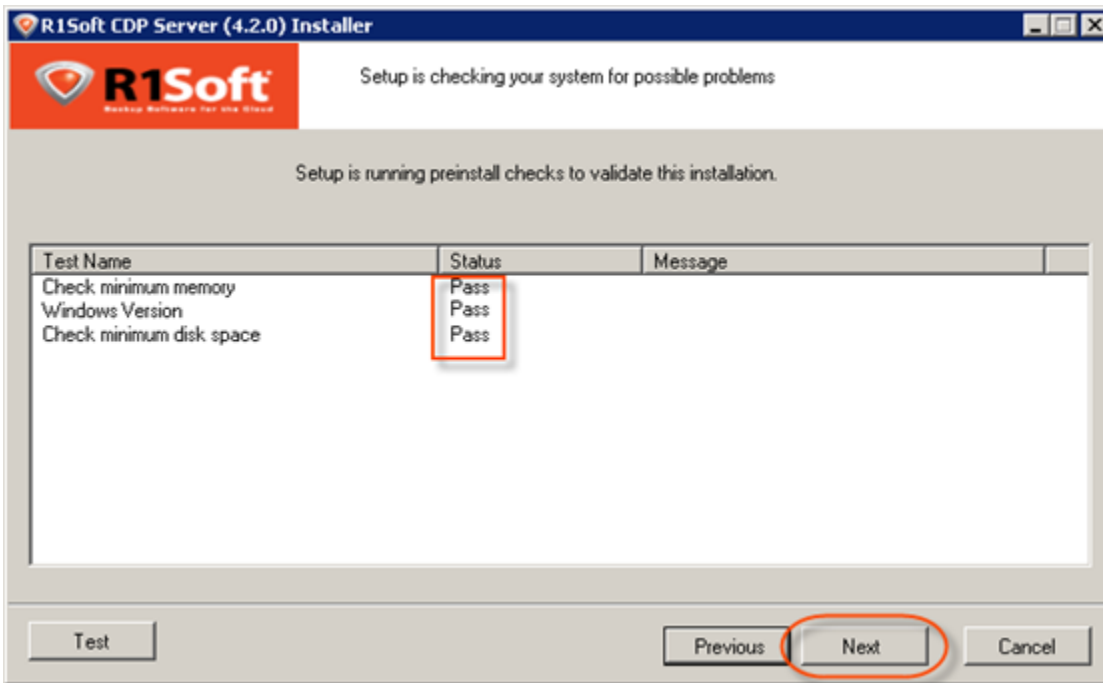
13. The R1Soft CDP Enterprise Edition Installer will open. Make sure that all other applications are closed and click "Next."



14. You must agree to the following license agreement. Read it to the end and click "Next" to accept.



15. The installer will check your system for possible problems. It is strongly recommended that all tests have a "Pass" status. You can repeat the tests by clicking the "Test" button. Click "Next" to go to the next screen.



Note

You can find the full list of requirements in [Enterprise Edition System Requirements].



Note

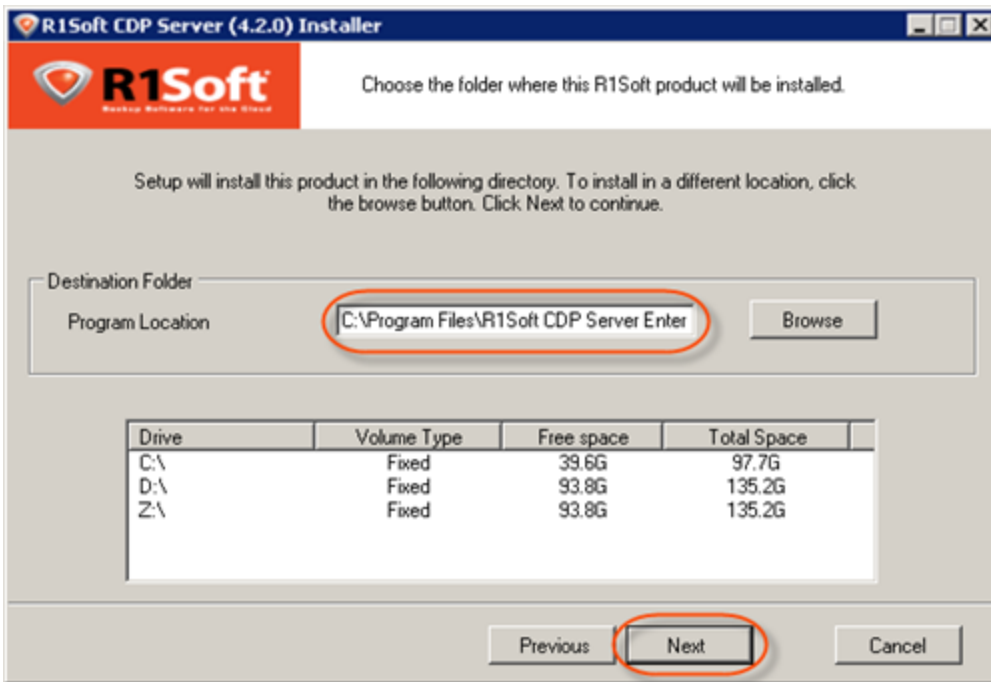
If one or several requirements are not met, then an explanation will be displayed in the "Message" column. For such configurations, further installation is not recommended.

Test Name	Status	Message
Check minimum memory	Fail	This software requires more than 2GB (2048MB) of ph...
Windows Version	Pass	
Previous 2.x series agent	Pass	
Check minimum disk space	Pass	

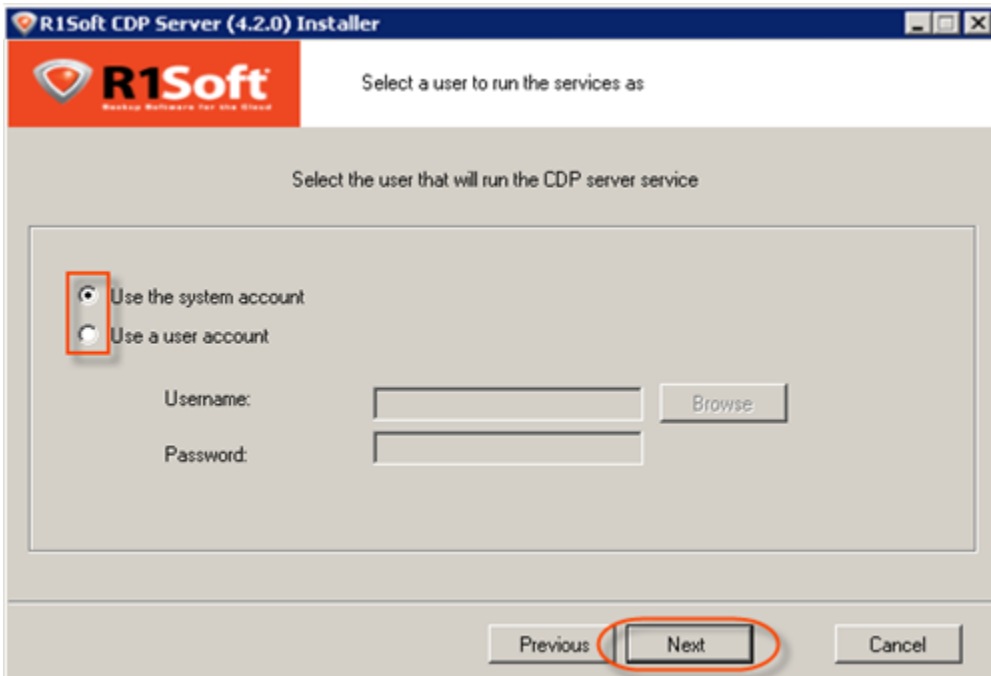
Possible values for the "Status" column are "Pass," "Not Recommended," and "Fail." If possible, correct the configuration and click "Test" again.

16. On the next screen, choose the installation directory for the server. It is safe to leave the default location untouched. However, you can install the server to another directory if, for example, you do not have enough free space on disk C.

Click "Next" to continue.



17. The "User Setup" window will load. You will be prompted to select the user you want to run the CDP Server as. By default, the "system account" is selected. It is safe to leave the default value untouched. The only exception is when you want to run the server on behalf of a Domain User that has local administrative rights. Make your selection and click "Next."



**Note**

If you are going to store Disk Safes at a network share, make sure the selected user has permission to write to the network share. See also: [Error - Could Not Create Disk Safe Directory](#) (CDP Server Knowledge Base).

**Note**

The user account can be changed using the CDP Configuration Utility.

18. Verify HTTP and HTTPS ports for the CDP Server Interface to run on. Edit these fields if necessary. Click "Next."

R1Soft CDP Server (4.2.0) Installer

Select a port for the CDP Server interface

Enter a port for the CDP Server interface to run on

HTTP Port: 81

HTTPS Port: 444

Previous Next Cancel

19. Set the Administrative User login credentials. The user name "admin" and the admin password that you select will be used to access the CDP Server via the Web Interface. The password characters will be replaced by asterisks (*) on the screen. Click "Next."

R1Soft CDP Server (4.2.0) Installer

R1Soft
Backup Software for the Cloud

CDP Server Administrative User

Enter the user name and password for the CDP Server administrative user. This user will be used to login to the interface.

Username:

Password:

Verify password:

Previous **Next** Cancel

The image shows the 'CDP Server Administrative User' configuration screen. It features a header with the R1Soft logo and the product name. Below the header, there is a title bar and a main area with instructions. Three input fields are provided for 'Username', 'Password', and 'Verify password'. The 'Next' button at the bottom is highlighted with a red circle.

20. The configuration is complete. Click "Next" to start the installation process.

R1Soft CDP Server (4.2.0) Installer

R1Soft
Backup Software for the Cloud

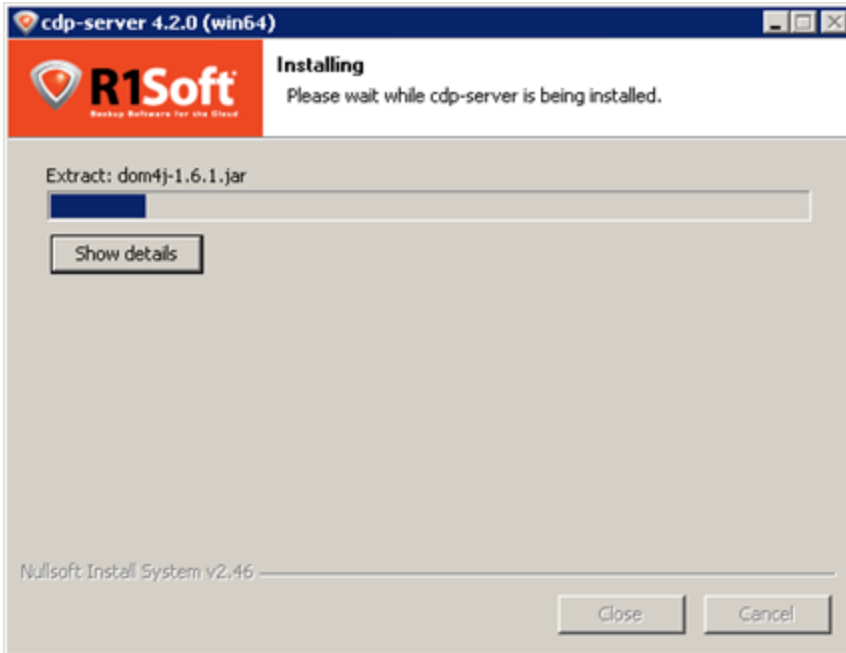
Setup is ready to install

Setup is done configuring and is ready to install. Click Next to complete this installation

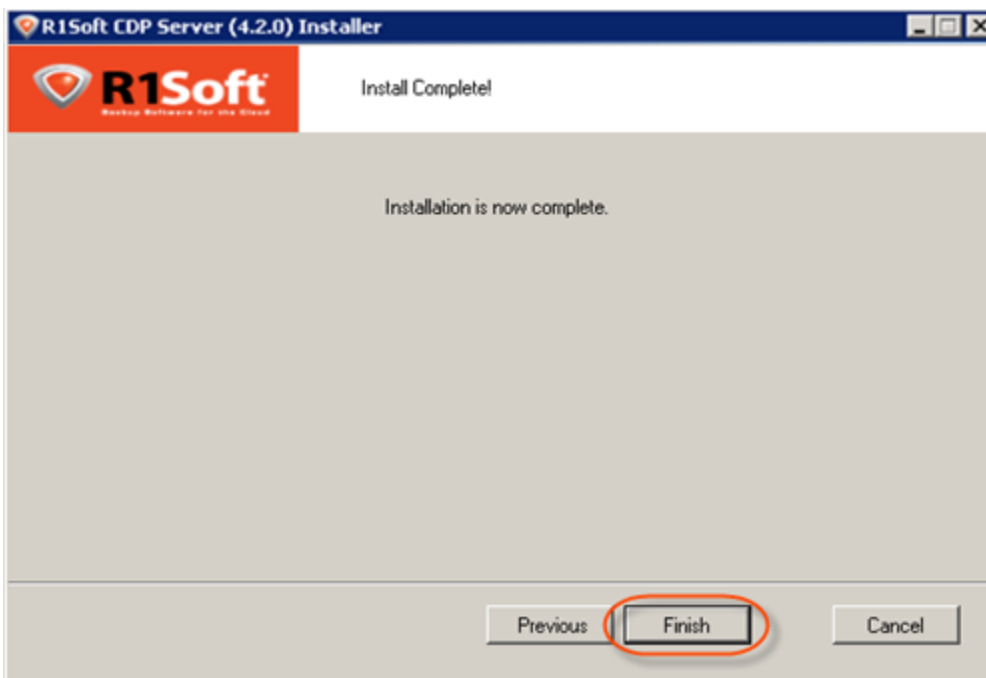
Previous **Next** Cancel

The image shows the 'Setup is ready to install' screen. It features a header with the R1Soft logo and the product name. Below the header, there is a title bar and a main area with a message. At the bottom, there are three buttons: 'Previous', 'Next', and 'Cancel'. The 'Next' button is highlighted with a red circle.

21. The installation process will start.



22. Your installation is now complete. Click "Finish."



Proceed to the next steps:

- Configuring Enterprise Edition on Windows
- Installing Agent on Windows
- Installing Agent on Linux
- Accessing Enterprise Edition Web Interface
- Activating CDP Enterprise Edition
- Adding the Server Key to Linux Agent

- [Adding the Server Key to Windows Agent](#)
- [Configuring Heap Memory](#)
- [Configuring Product Features](#)