

Installing Agent on Windows

You can use the "Enterprise Edition" or "Enterprise Agent" installer to install CDP Agent 4.2 Enterprise Edition. The Agent installer is a typical Windows installer application. Once you have [obtained](#) the CDP Enterprise Agent installation file, follow the instructions given below to install CDP Agent 4.2 Enterprise Edition.



Note

New in version 4.2. Windows installers will support English, Japanese, and Spanish. End-users cannot add installation support for additional languages. The language chosen during the installation will NOT become the CDP Server's default user language.

1. Log on to the Windows server as a member of the local Administrators group.



Notice

The user account must have "Log On as Service" permission to start the CDP Agent service automatically.

2. Extract the files from the archive. Navigate to the directory where you saved the "Enterprise Edition" or "Enterprise Agent" installation file. The Agent installer will have the following attributes:

For a 32-bit system:

- File name - R1Soft-EnterpriseAgent-win32.zip
- File size - 30.1 MB

For a 64-bit system:

- File name - R1Soft-EnterpriseAgent-win64.zip
- File size - 52.0 MB

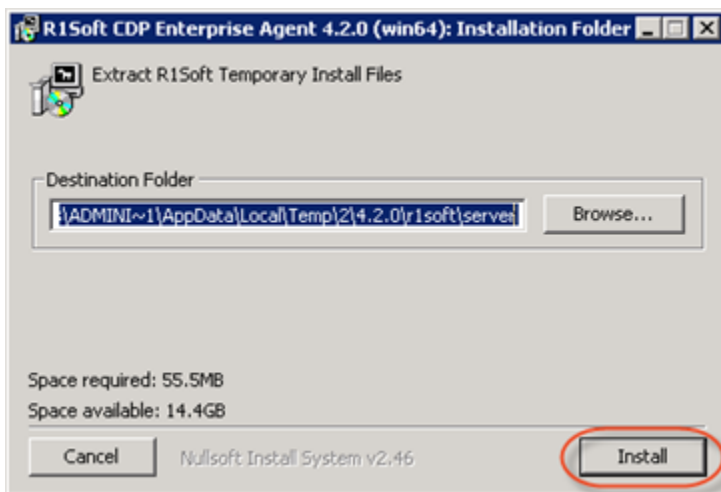
**Note**

The "Enterprise Edition" installer package is capable of installing both Server and Agent software. The "Enterprise Agent" installer package contains only the Agent software and is a much smaller package.

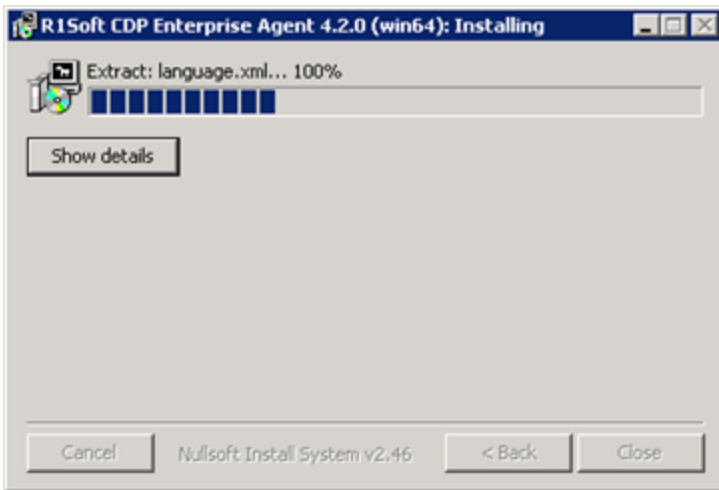
**Note**

R1Soft products follow this format for version numbers: MAJOR.MINOR.MAINTENANCE. Pre-release downloads ALWAYS have a version number that has an ODD MINOR number, e.g., 3.7.0. Stable downloads ALWAYS have a version number with an EVEN MINOR number, e.g., 3.8.1.

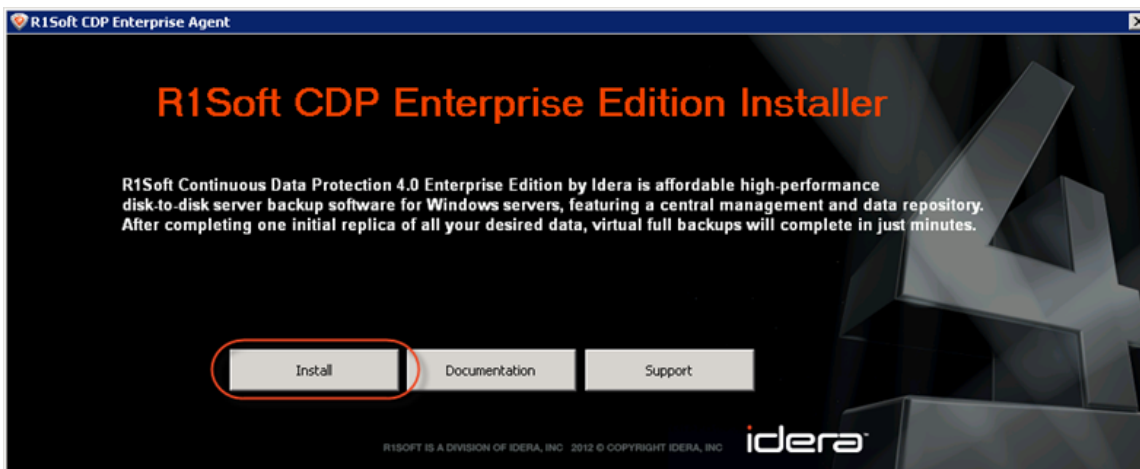
3. Execute the installer by clicking "Run."
4. Verify the installation destination and click on the "Install" button.



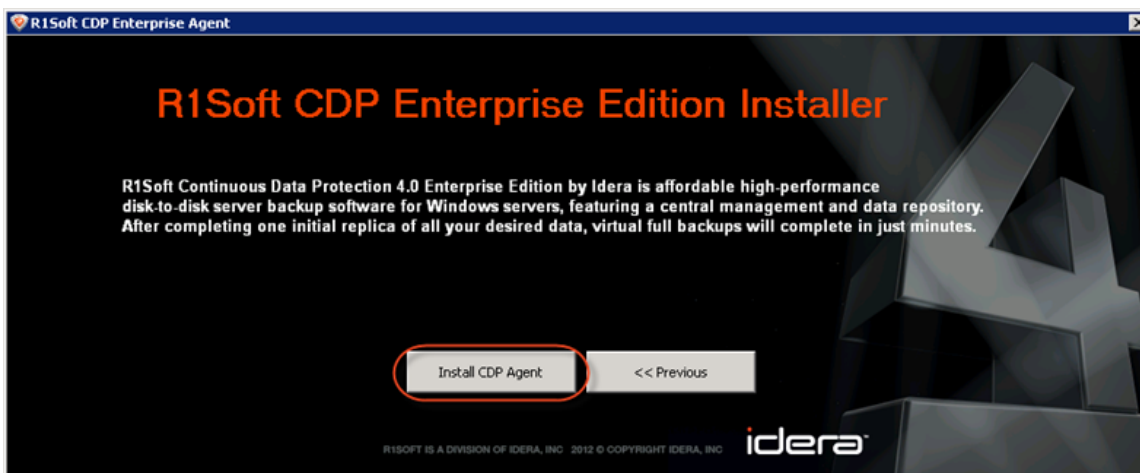
5. Wait while the files are extracted.



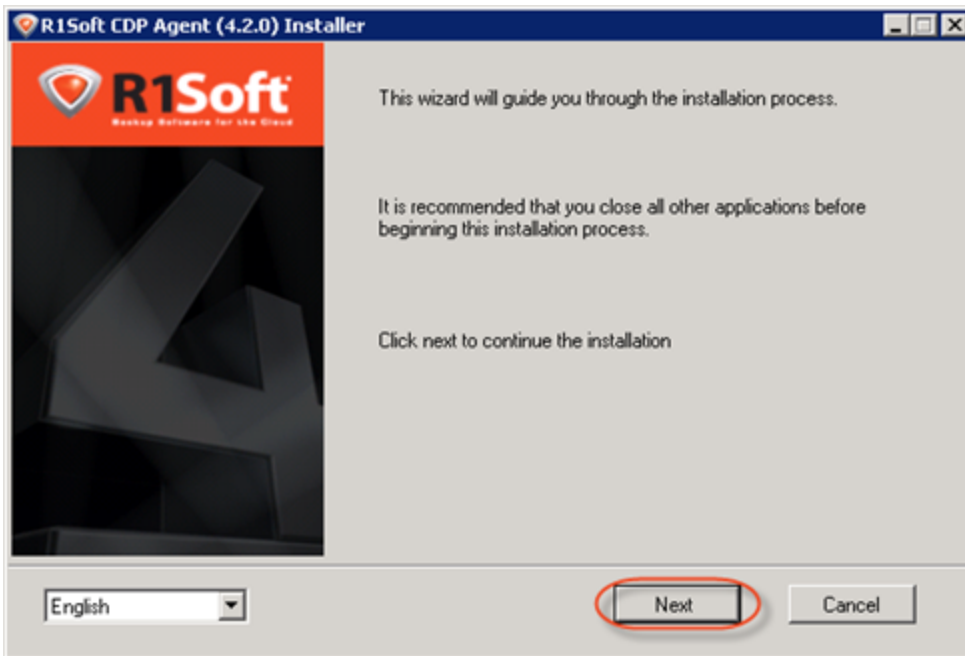
6. Click "Install" in the opened window.



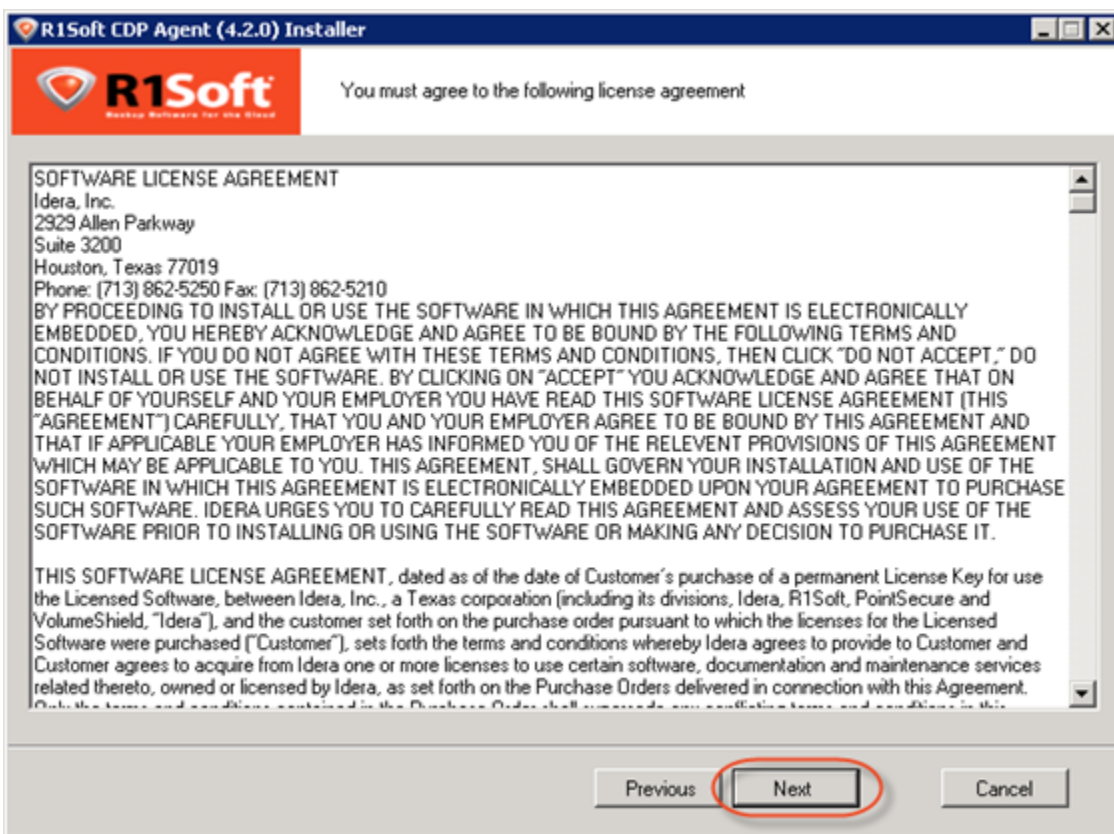
7. Click "Install CDP Agent."



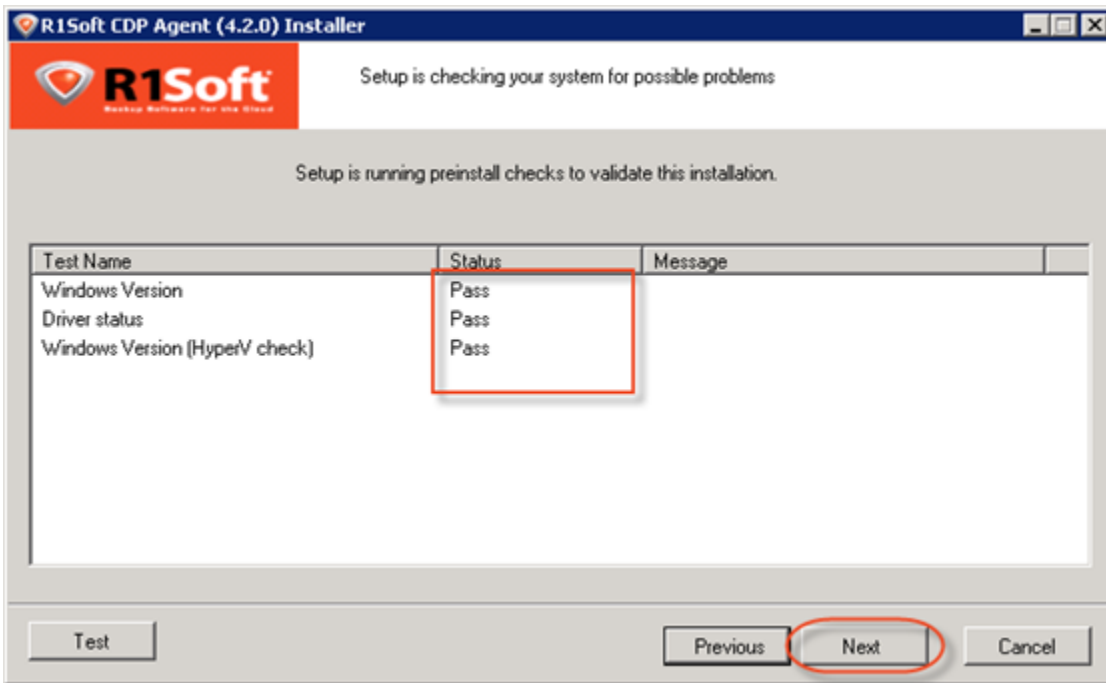
8. The R1Soft CDP Agent Enterprise Edition Installer will open. Make sure all other applications are closed and click "Next."



9. You must agree to the following license agreement. Read it to the end and click "Next" to accept.



10. The installer will check your system for possible problems. It is strongly recommended that all tests have a "Pass" status. You can repeat the tests by clicking the "Test" button. Click "Next" to go to the next screen.



Note

You can find the full list of requirements here:

<http://www.r1soft.com/windows-cdp/cdp-enterprise-edition/requirements/>.



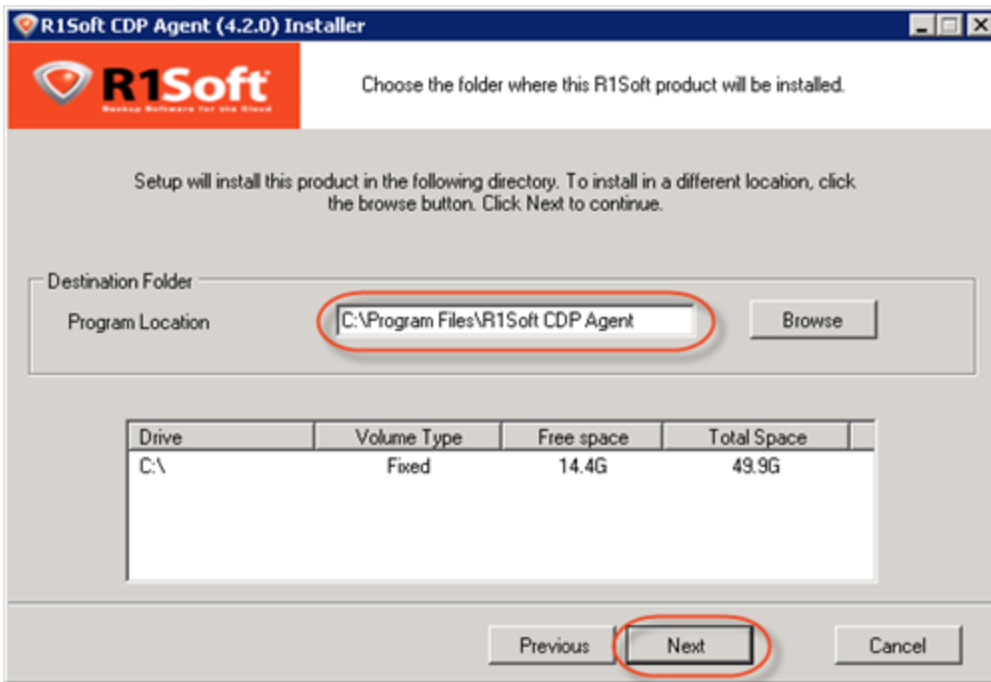
Note

If one or several requirements are not met, then an explanation will be displayed in the "Message" column. For such configurations, further installation is not recommended.

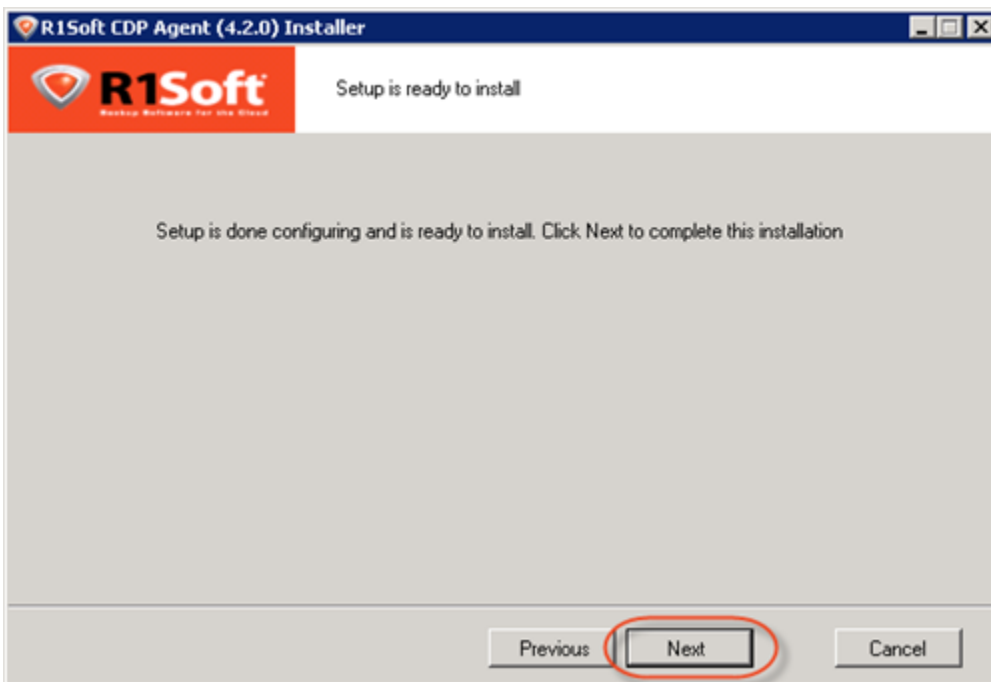
Possible values for the "Status" column are "Pass," "Not Recommended," and "Fail."

If possible, correct the configuration and click "Test" again.

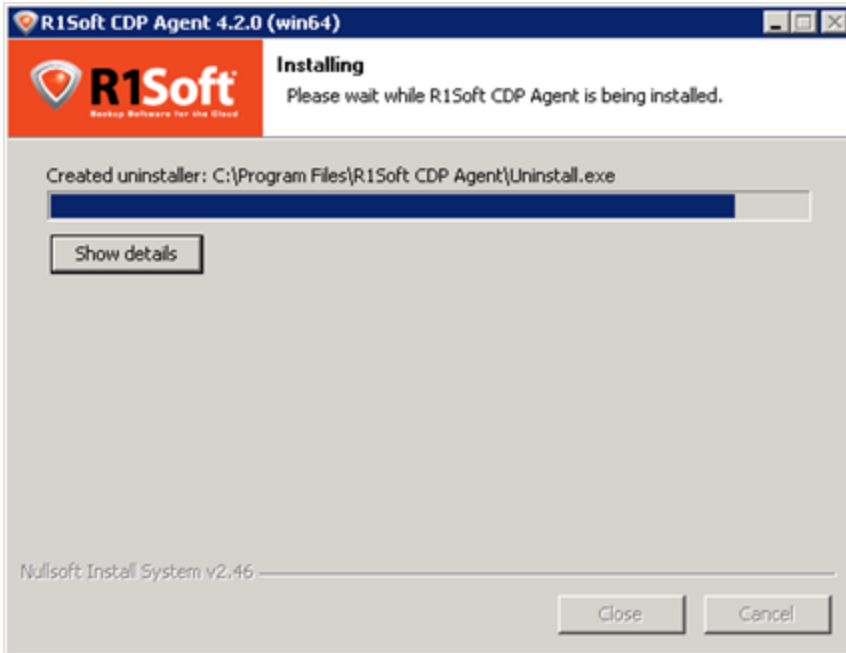
11. On the next screen, choose the installation directory for the Agent. It is safe to leave the default location untouched. However, you can install the Agent to another directory if, for example, you do not have enough free space on disk C. Click "Next" to continue.



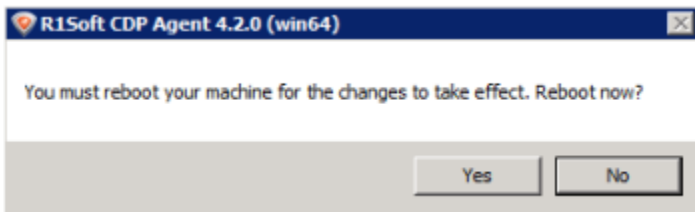
12. The configuration is complete. Click "Next" to start the installation process.



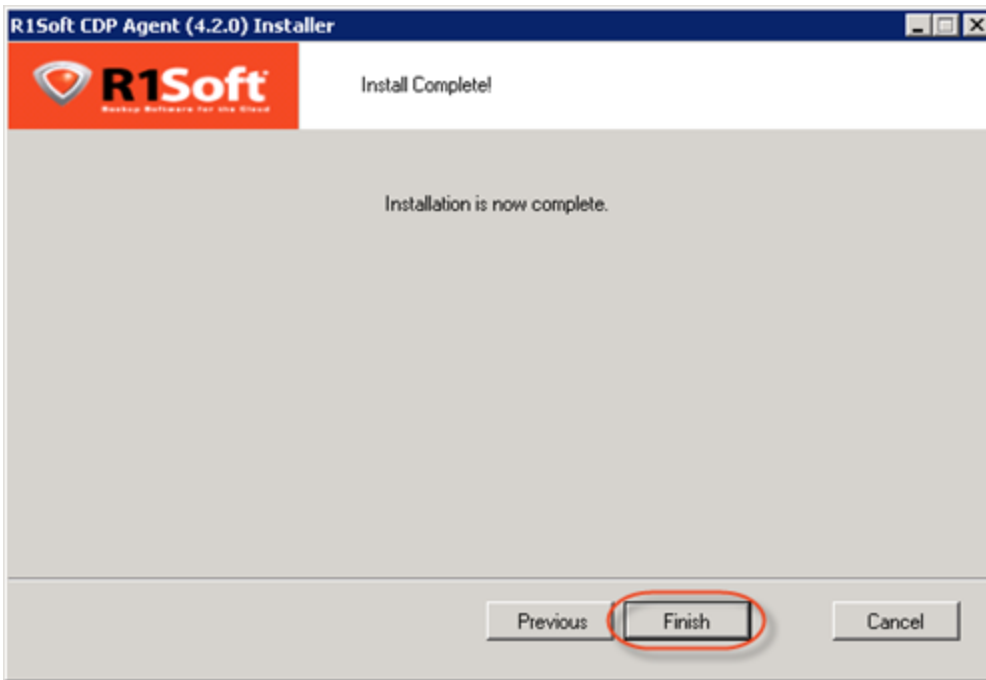
13. The installation process will start.



14. Once the process has been completed the following message will appear. Click the "Yes" button to reboot your machine for the changes to take effect. To postpone the reboot process and perform some additional activities click the "No" button.



15. To complete the installation, click "Finish" in the displayed window.



Proceed to the next steps:

- [Installing Enterprise Edition on Windows Manually](#)
- [Installing Enterprise Edition on Linux](#)
- [Adding the Server Key to Windows Agent](#)