

## Checking Windows Bit Version

This document will help you to find out if your Windows Vista, XP, 7, 2003, 2008 System is 32-bit or 64-bit (x86 or x64). Depending on your Windows version, you need to obtain the 32-bit or 64-bit CDP software installer.

Locate the operating system that is running on your computer, and then follow the steps to determine the bit count of your operating system.

---

[Windows Vista](#) | [Microsoft Windows XP Professional](#) | [Microsoft Windows Server 2003](#) | [Windows 7](#) | [Windows Server 2008](#) | [Windows Server 2008 R2](#) | [Windows Server 2008 Server Core](#)

---

### Windows Vista

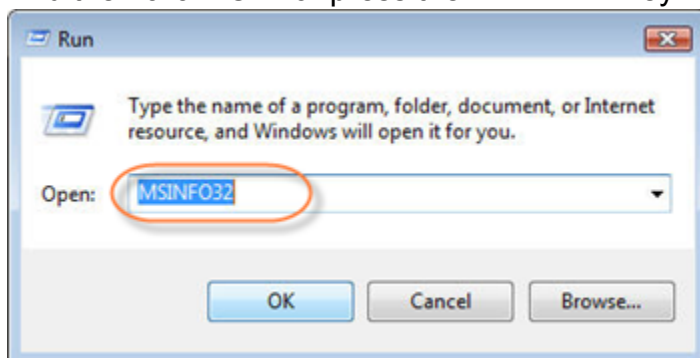
If you have Windows Vista, there are three methods to determine whether you are running a 32-bit or a 64-bit version. Follow the instructions below to check a version of Windows you are installing into.

Method 1 - Using msinfo32

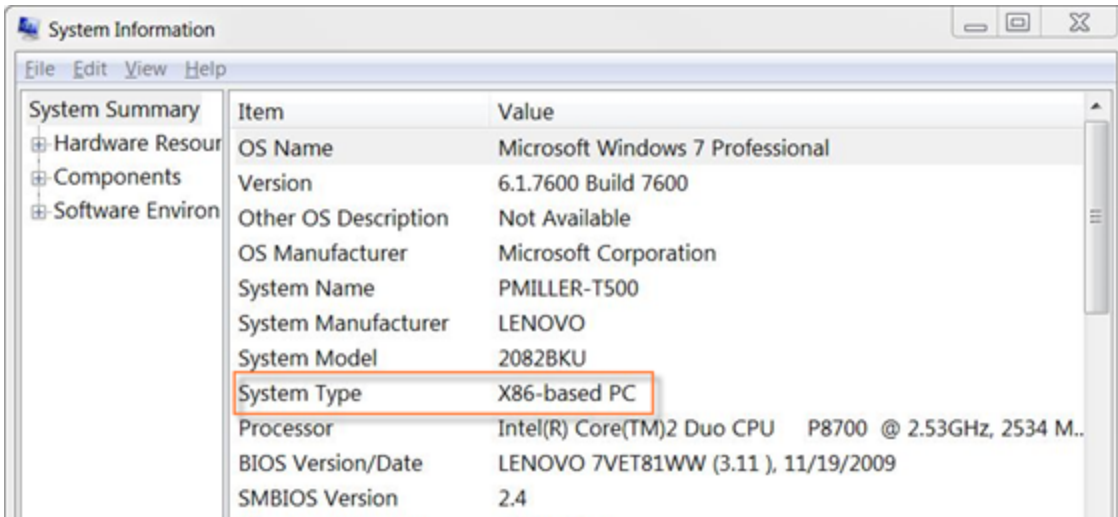
1. Click "Start."
2. Then click on "Run" or "Start Search."
3. Type:

msinfo32.exe

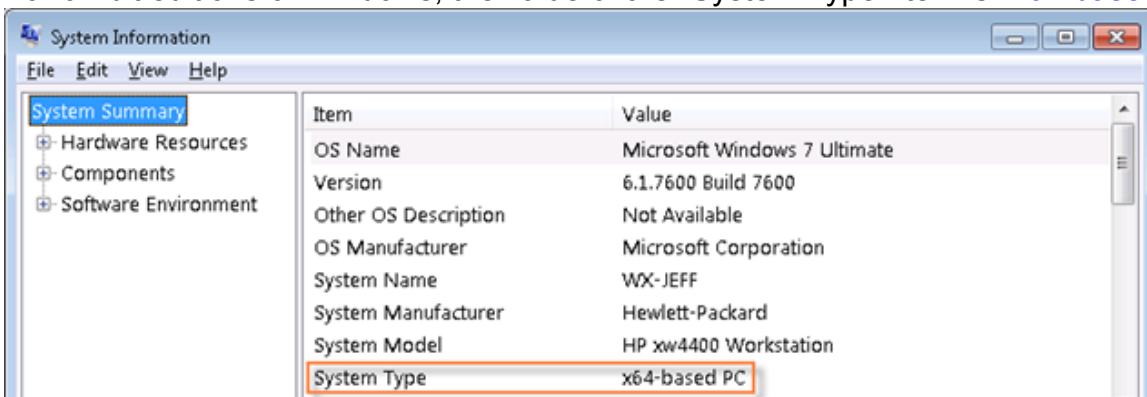
And then click "OK" or press the <ENTER> key.



4. In the displayed "System Information" window, review the value for the System Type item:
  - For 32-bit editions of Windows, the value of the "System Type" item is "x86-based PC."



- For 64-bit editions of Windows, the value of the "System Type" item is "x64-based PC."

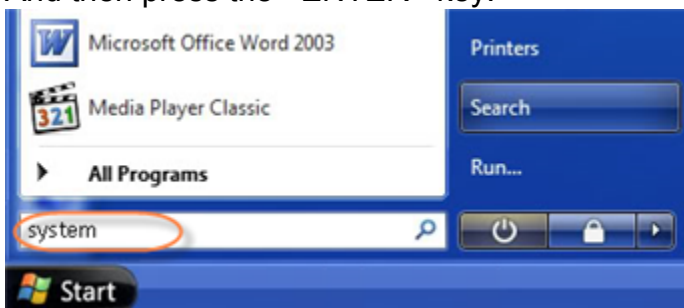


Method 2 - Using System Window

1. Click "Start."
2. In the "Start Search" box, type:

system

And then press the <ENTER> key.



3. Then click "System" in the "Programs" list.
4. The operating system appears as follows:

- For a 64-bit version operating system: "64-bit Operating System" appears for the "System

type" under "System."

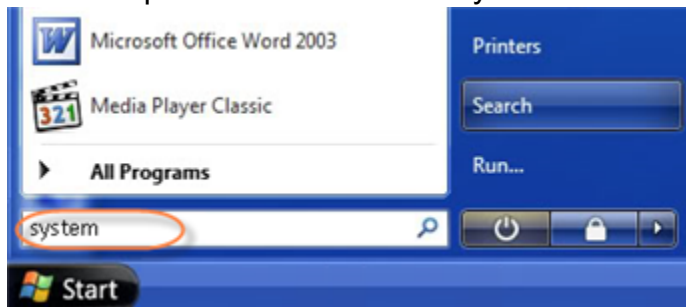
- For a 32-bit version operating system: "[32-bit Operating System](#)" appears for the "System type" under "System."

Method 3 - Using System Summary

1. Click "Start."
2. In the "Start Search" box, type:

system

And then press the <ENTER> key.



3. Then click "System Information" in the "Programs" list.
4. When "System Summary" is selected in the navigation pane, the operating system is displayed as follows:

- For a 64-bit version operating system: "[x64-based PC](#)" appears for the "System type" under "Item."
- For a 32-bit version operating system: "[x86-based PC](#)" appears for the "System type" under "Item."

---

## Microsoft Windows XP Professional

If you have Windows XP, there are three methods to determine whether you are running a 32-bit or a 64-bit version.

Method 1 - Using msinfo32

Follow the instructions below to use msinfo32.exe.

1. Click "Start."
2. Then click on "Run" or "Start Search."
3. Type:

msinfo32.exe

And then press the <ENTER> key.

4. In the displayed "System Information" window, review the value for the System Type item:

- For 32-bit editions of Windows, the value of the "System Type" item is "x86-based PC."
- For 64-bit editions of Windows, the value of the "System Type" item is "x64-based PC."

Method 2 - Using sysdm

Some versions of Windows XP do not have msinfo32.exe installed. For such versions, follow the instructions below.

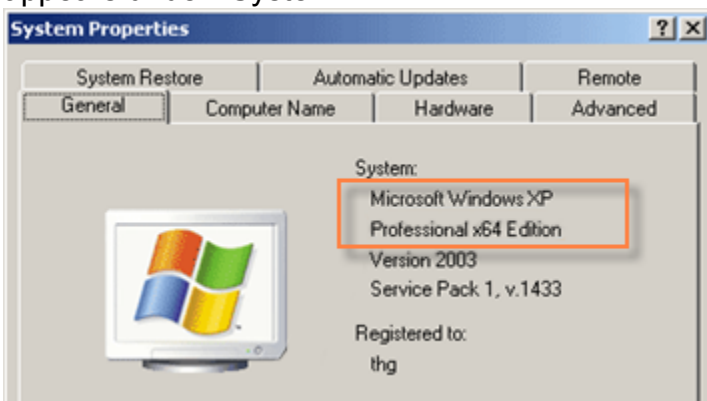
1. Click "Start."
2. Click "Run."
3. Type:

sysdm.cpl

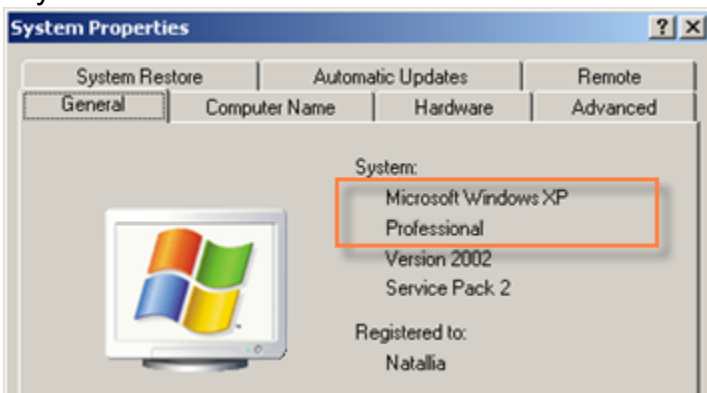
And then click "OK."

4. Click the "General" tab. The operating system appears as follows:

- For a 64-bit version operating system: "Microsoft Windows XP Professional x64 Edition" appears under "System."



- For a 32-bit version operating system: "Microsoft Windows XP Professional" appears under "System."



## Method 3 - Using winsd

1. Click "Start."
2. Click "Run."
3. Type:

```
winmsd.exe
```

And then click "OK."

4. In the details pane, locate Processor under Item. Note the value.

- If the value that corresponds to Processor starts with "x86," the computer is running a 32-bit version of the Windows operating system.
- If the value that corresponds to Processor starts with "ia64" or "AMD64," the computer is running a 64-bit version of the Windows operating system.

---

## Microsoft Windows Server 2003

If you have Windows Server 2003, there are two methods to determine whether you are running a 32-bit or a 64-bit version.

## Method 1 - Using sysdm

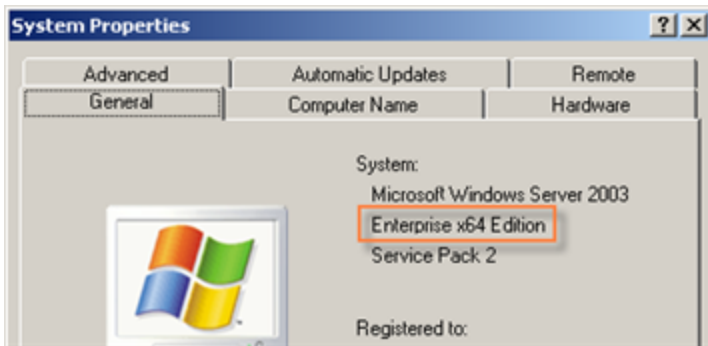
1. Click "Start."
2. Click "Run."
3. Type:

```
sysdm.cpl
```

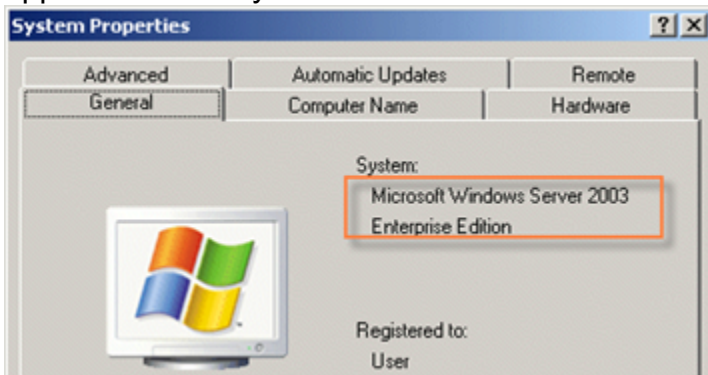
And then click "OK."

4. In the "System Properties" window, go to the "General" tab.
5. The operating system appears as follows:

- For a 64-bit version operating system: "[Microsoft Windows Server 2003 Enterprise x64 Edition](#)" appears under "System."



- For a 32-bit version operating system: "Microsoft Windows Server 2003 Enterprise Edition" appears under "System."



Method 2 - Using winmsd

Using winmsd.exe provides a more detailed output of the operating system.

1. Click "Start."
2. Click "Run."
3. Type:

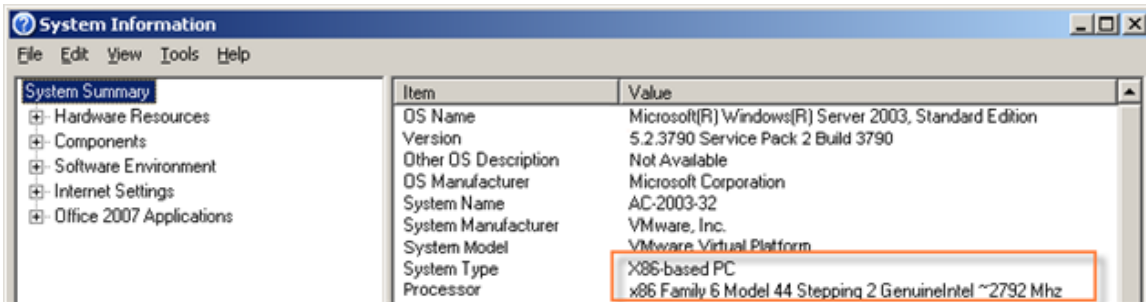
winmsd.exe

And then click "OK."

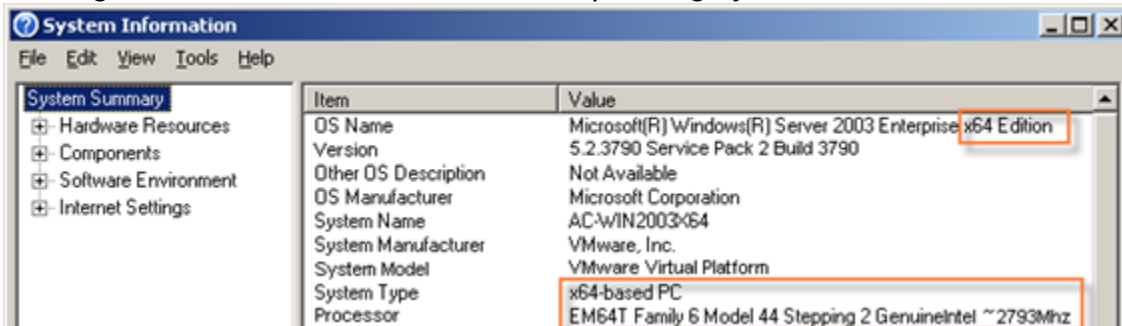


4. In the details pane, locate Processor under Item. Note the value.

- If the value that corresponds to Processor starts with "x86," the computer is running a 32-bit version of the Windows operating system.



- If the value that corresponds to Processor starts with "EM64T" or "ia64," the computer is running a 64-bit version of the Windows operating system.



## Windows 7

To find out if your computer is running a 32-bit or 64-bit version of Windows 7, do the following:

Method 1 - Using the Computer Properties

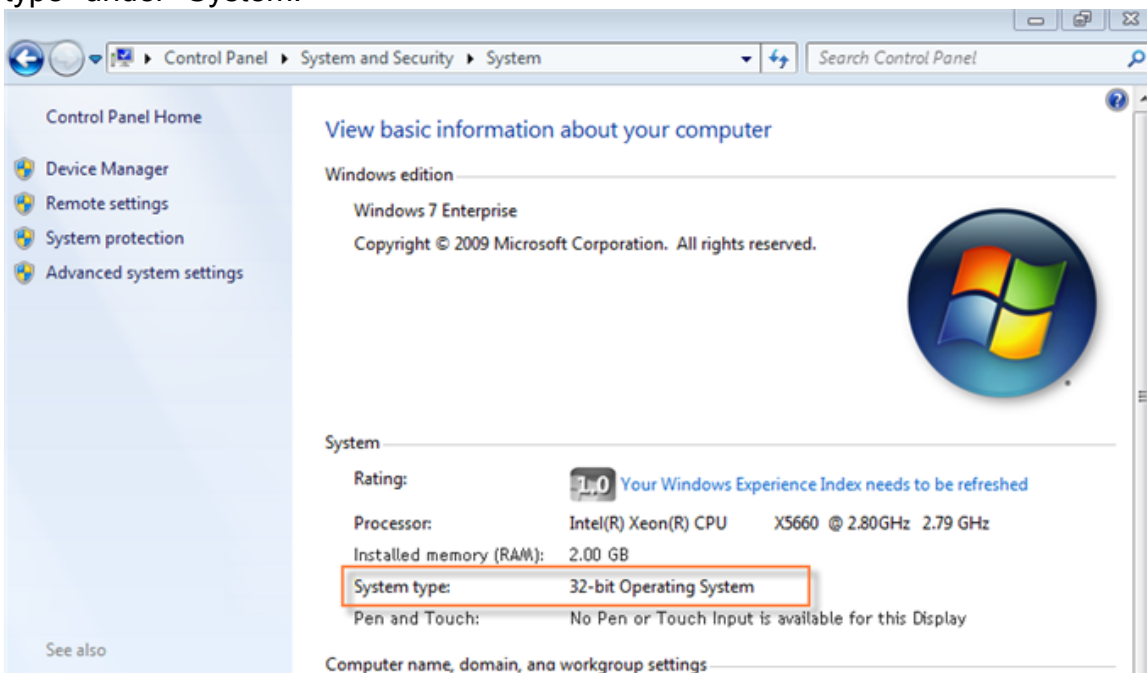
**Note**  
Works for Windows 7 and Windows Vista.

1. Click "Start."
2. Right-click "Computer."
3. Then click "Properties."
4. Under "System," you can view the system type.

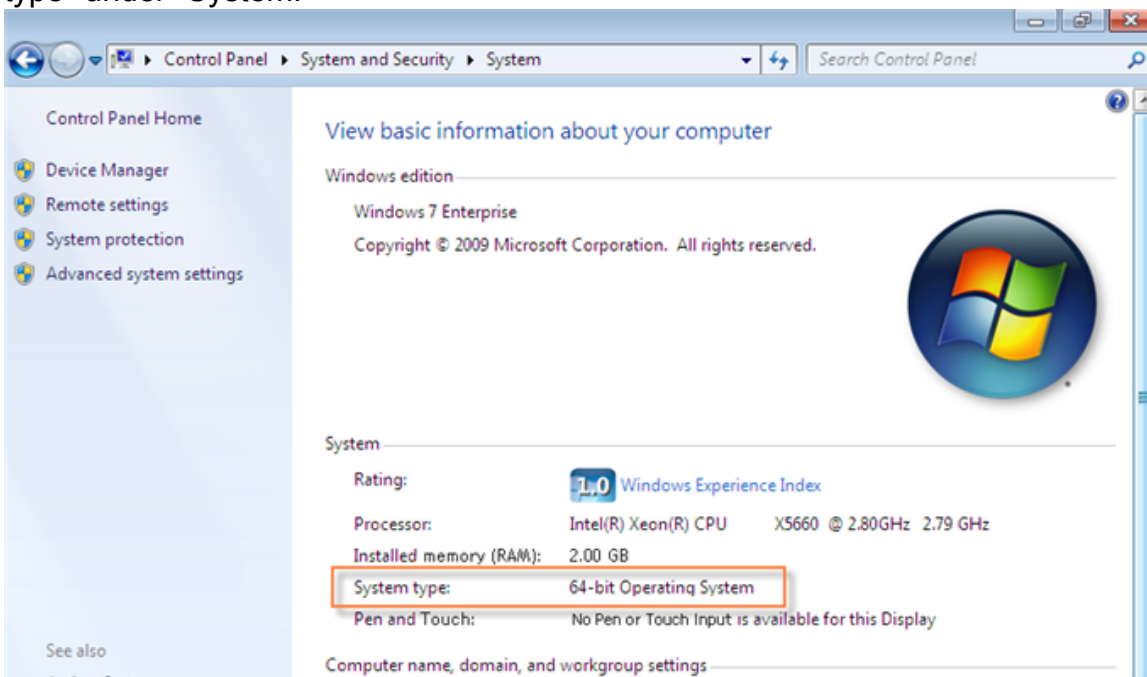
Method 2 - Using the System Screen in Control Panel

1. Access the "Control Panel."
2. Select "System & Security."
3. Then select "System."
4. Under "System," you can view the system type. The operating system appears as follows:
  - For a 32-bit version operating system: "32-bit Operating System" appears for the "System

type" under "System."



- For a 64-bit version operating system: "64-bit Operating System" appears for the "System type" under "System."



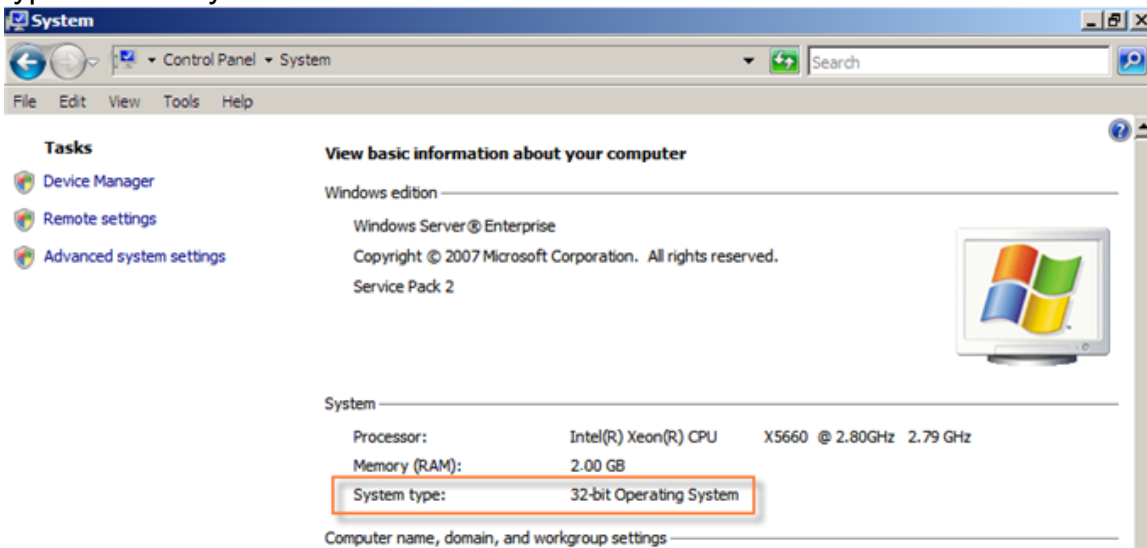
## Windows Server 2008

To find out if your computer is running a 32-bit or 64-bit version of Windows Server 2008, do the following:

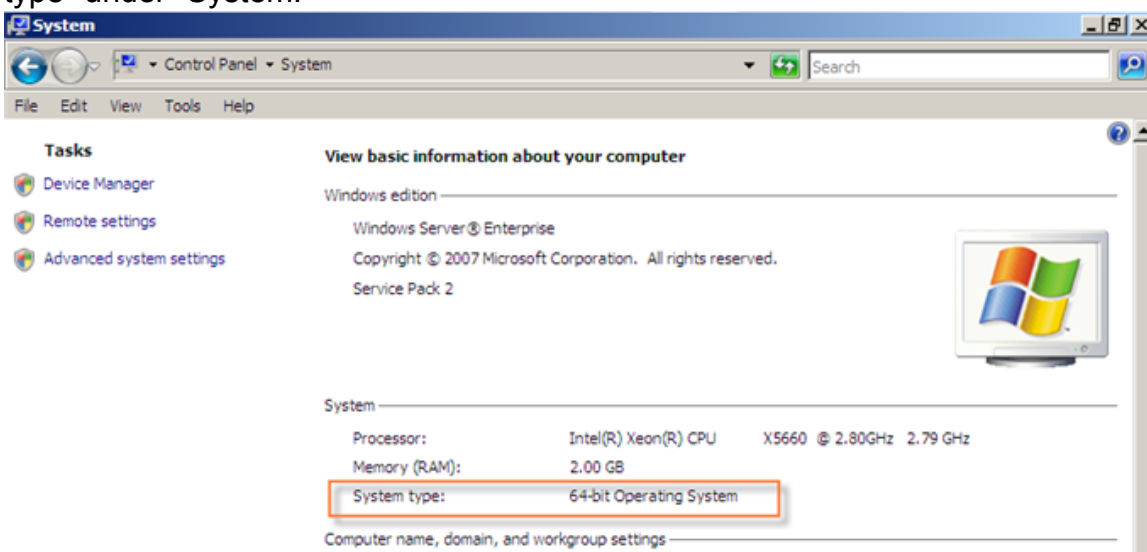
1. Access the Control Panel.
2. Click "System."

### 3. The operating system appears as follows:

- For a 32-bit version operating system: "32-bit Operating System" appears for the "System type" under "System."



- For a 64-bit version operating system: "64-bit Operating System" appears for the "System type" under "System."




---

### Windows Server 2008 R2

Windows Server 2008 R2 is only available in 64-bit.

---

### Windows Server 2008 Server Core

Server Core is a minimal server installation option for computers running on the Windows Server 2008 operating system or later. Server Core provides a low-maintenance server

environment with limited functionality. Server Core requires Windows Server 2008 or later.

1. Click "Start." Then click on "Run" or "Start Search."
2. Type:

```
systeminfo
```

And then press the <ENTER> key.

3. In "System Information", review the value for the System Type item:

- For 32-bit editions of Windows, the value of the System Type item is "x86-based PC."
- For 64-bit editions of Windows, the value of the System Type item is "x64-based PC."

```
C:\Users\Administrator>systeminfo
Host Name:                WIN-UGL1KKRNH30
OS Name:                  Microsoft Windows Server 2008 R2 Standard
OS Version:              6.1.7600 N/A Build 7600
OS Manufacturer:        Microsoft Corporation
OS Configuration:        Standalone Server
OS Build Type:            Multiprocessor Free
Registered Owner:        Windows User
Registered Organization:
Product ID:               00477-001-0000421-84133
Original Install Date:    3/12/2010, 5:58:45 PM
System Boot Time:         7/1/2010, 11:48:35 AM
System Manufacturer:      VMware, Inc.
System Model:              VMware Virtual Platform
System Type:              x64-based PC
Processor(s):             2 Processor(s) Installed.
                          [01]: Intel64 Family 6 Model 44 Stepping 2 GenuineInt
e1 ~2793 Mhz
                          [02]: Intel64 Family 6 Model 44 Stepping 2 GenuineInt
e1 ~2793 Mhz
BIOS Version:             Phoenix Technologies LTD 6.00, 9/22/2009
Windows Directory:        C:\Windows
System Directory:         C:\Windows\system32
Boot Device:              \Device\HarddiskVolume1
```