


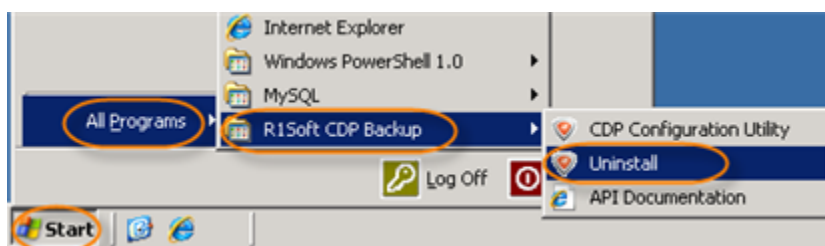
Uninstalling Enterprise Edition on Windows

To remove the R1Soft CDP Enterprise Edition from your computer, follow the steps below.

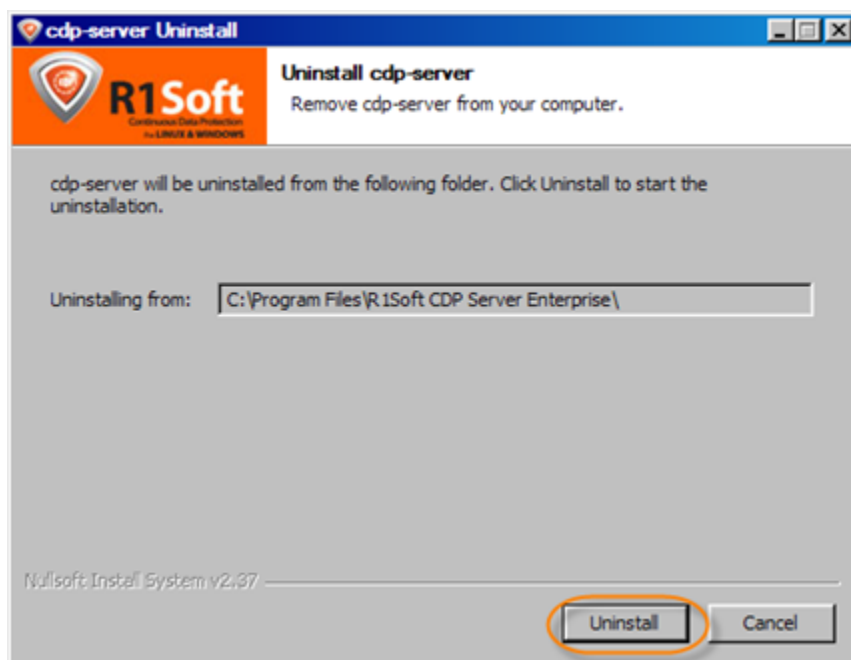
1. Locate the shortcut to the uninstaller program in the Windows Start menu.

The full path to the shortcut is Start > (All) Programs > R1Soft CDP Backup > Uninstall.

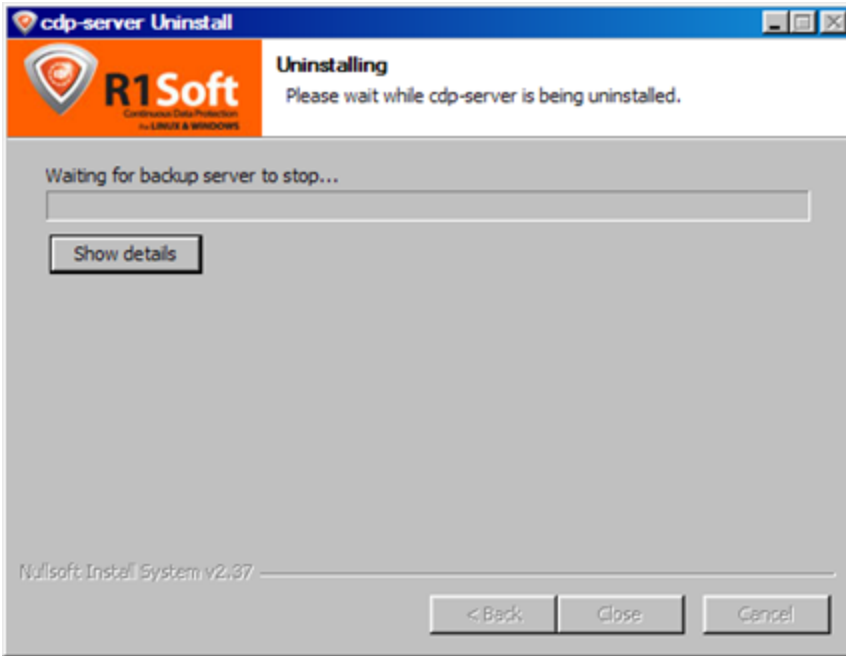
 Notice
The path can be different.



2. The uninstaller program displays the path to the server being uninstalled in the below window. Click "Uninstall" to proceed with uninstallation.



3. Wait for the uninstallation process to finish. It may take a few minutes.



4. Once the process has been completed, click "Close." You do not need to restart your computer.

