

## Monitoring Agents in Data Center Console

CDP Data Center Console allows you to monitor parameters of Agents on multiple CDP Servers at once. This can be done from the "Agents" screen.

Follow the instructions below to access the "Agents" screen.

1. Select "Agents" from the Main Menu.



You will enter the "Agents" screen.

The screenshot shows the 'Agents List' table and the 'Agent Details for Agent' pane. The table lists three agents: 'Agent', 'Agent\_CentOS', and 'Agent\_Ubuntu'. The details pane shows information for the 'Agent' entry, including its name, CDP Server (Ubuntu\_CDP), GUID, Host Name/IP (192.168.1.40), OS Type (Linux), Port Number (1167), Agent Version (4.2.0.17529), OS Version (Linux 2.6.18-308.8.2.el5 #1 SMP Tue Jun 12 09:57:26 EDT 2012 i686), Driver Version (HCP 4.2.1.17028), and Add-ons.

Name	CDP Server	Host Name/IP	Port Number	Agent Version	OS Type	Add-ons	Actions
Agent	Ubuntu_CDP	192.168.1.40	1167	4.2.0.17529	Linux		[Icons]
Agent_CentOS	Ubuntu_CDP	192.168.1.36	1167	4.2.0.17529	Linux		[Icons]
Agent_Ubuntu	Ubuntu_CDP	192.168.1.39	1167		Linux		[Icons]

Identification	
Name	Agent
CDP Server	<a href="#">Ubuntu_CDP</a>
GUID	2135475d-6f85-4b9e-b32b-2e9eaab85cb0
Host Name/IP	192.168.1.40
OS Type	Linux
Port Number	1167
Agent Version	4.2.0.17529
OS Version	Linux 2.6.18-308.8.2.el5 #1 SMP Tue Jun 12 09:57:26 EDT 2012 i686
Driver Version	HCP 4.2.1.17028
Add-ons	

Statistics	
Disk Safes	1
Groups	0
Users	0

## The Agents List | Details Pane

### The Agents List

The list of all Agents is displayed with the following columns:

- Name - The name of the Agent.
- CDP Server - The name of the CDP Server to which the current Agent belongs.

**Note**  
The server name is displayed in the form of a link. You can click the link for quick access to the CDP Server.

Status	Name	CDP Server	Quota Type	Soft Quota	Hard Quota
✓	linux_vol	<a href="#">Houston_DC</a>	⚠		

- Hostname - The hostname or IP address of the Agent.
- Port Number - The port used to connect to the Agent.
- OS Type - The icon-indicating operation system (Windows or Linux) is displayed in this column.
- Actions - This column contains the list of actions that can be performed over the Agent. See the description below.

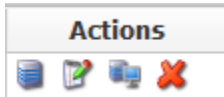
**Tip**

Use "Pages Navigation" to look through the "Agents" list more efficiently.



The Agents Actions

The Agents list contains the "Actions" pane.



The following Actions are available:

Icon	Action	Description
	Open CDP Server to view agents	Click this icon to open the CDP Server.
	Edit CDP Server	Click this icon to edit the Agent properties. See <a href="#">Editing Agents in Data Center Console</a> .
	Test Agent Connection	Click this icon to test the communication between the Agent and Data Center Console. See <a href="#">Testing Agent Connection in Data Center Console</a> .
	Delete	Click this icon to delete the Agent from the Console.

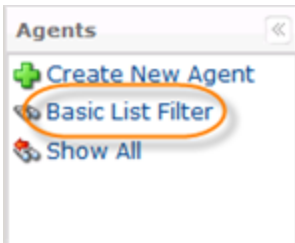
You can perform some of the actions on several Agents at once by selecting them from the list using checkboxes and clicking the corresponding button at the top.

- Edit Selected
- Delete Selected

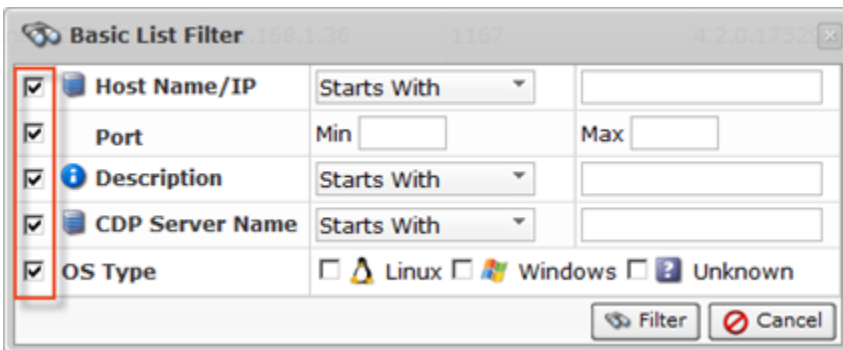
See the descriptions of these actions in the table above.

Filtering the "Agents" List

You can use a Basic List Filter to sort the "Agents" list. Click on the "Basic List Filter" link to access the filtering options.



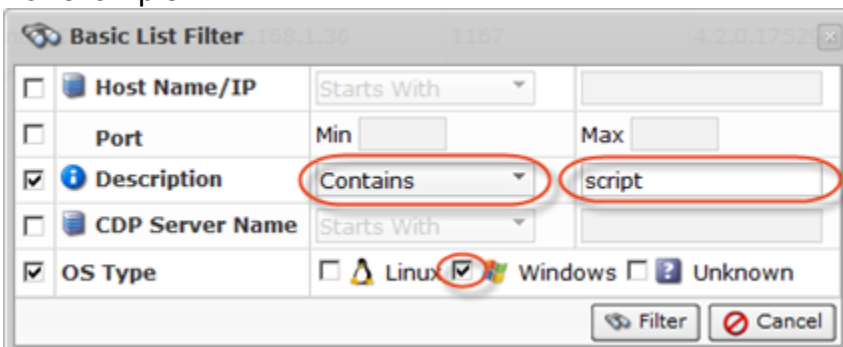
1. Select the necessary options to filter.



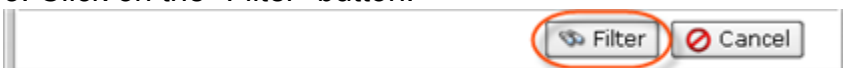
- Hostname - Allows you to sort by hostname.
- Port - Allows you to sort by port.
- Description - Allows you to sort by description.
- CDP Server Name - Allows you to sort by CDP Server name.
- OS Type - Allows you to sort by the OS:
  - Linux
  - Windows
  - Unknown

2. Select the type of search from the drop-down menu (Starts With/Contains/Ends With) and enter the hostname/description/Server name to the field. Select the OS Type.

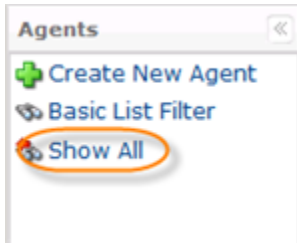
For example:



3. Click on the "Filter" button.



If you want to discard filtering options and view the whole list, click "Show All."



## Details Pane

Click on the Agent in the "Agents" list to see its details in the "Details" pane. The "Details" pane has the following tabs:

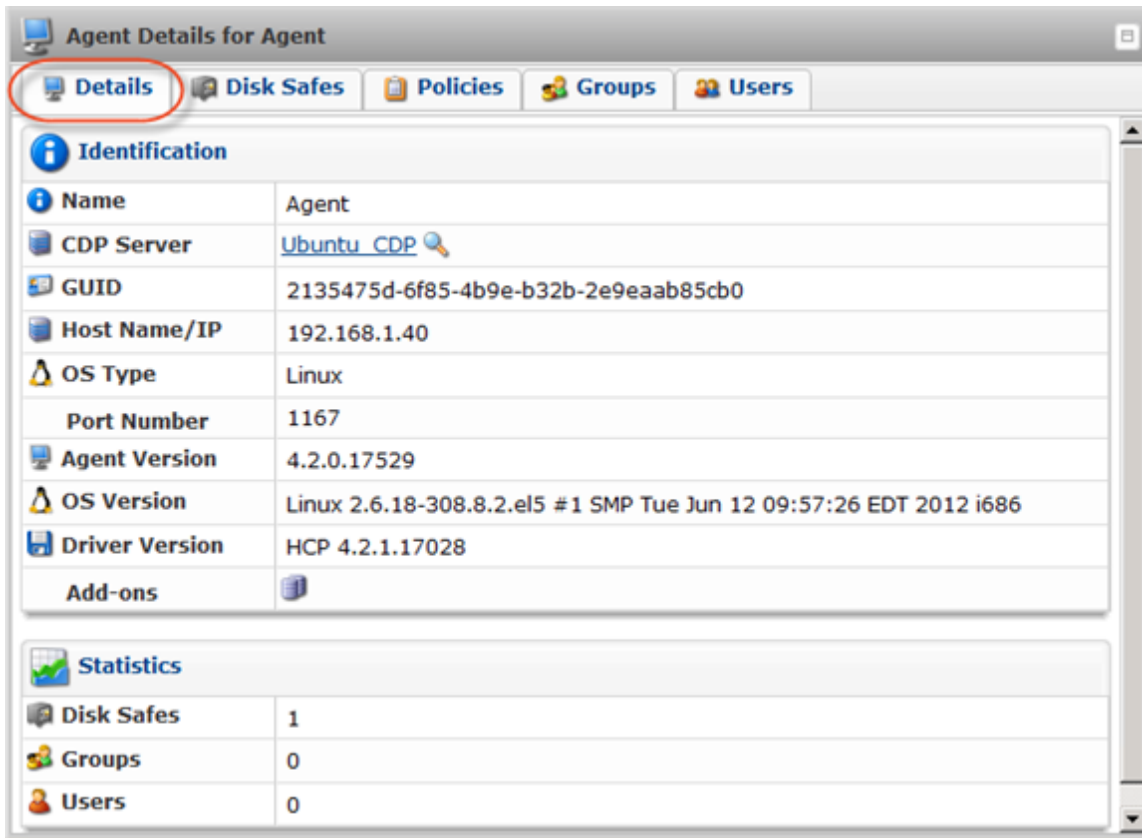
- Details
- Disk Safes
- Policies
- Groups
- Users

---

[The Agents Actions](#) | [Filtering the "Agents" List](#) | [Details Tab](#) | [Disk Safes Tab](#) | [Policies Tab](#) | [Groups Tab](#) | [Users Tab](#)

---

## Details Tab



The screenshot shows a window titled "Agent Details for Agent" with a navigation bar containing "Details", "Disk Safes", "Policies", "Groups", and "Users". The "Details" tab is selected and circled in red. Below the navigation bar, there are two sections: "Identification" and "Statistics".

**Identification**

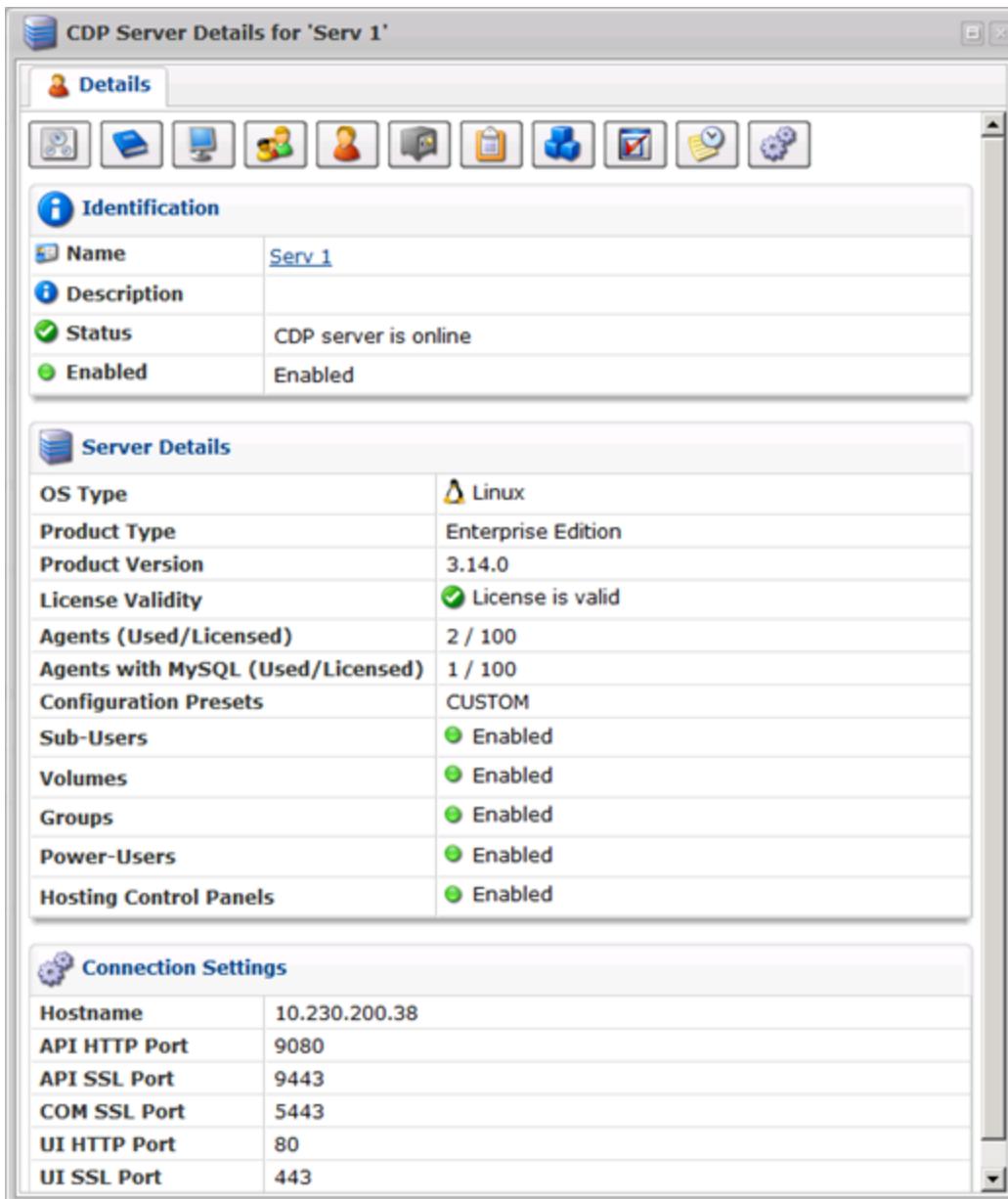
Name	Agent
CDP Server	<a href="#">Ubuntu_CDP</a> 🔍
GUID	2135475d-6f85-4b9e-b32b-2e9eaab85cb0
Host Name/IP	192.168.1.40
OS Type	Linux
Port Number	1167
Agent Version	4.2.0.17529
OS Version	Linux 2.6.18-308.8.2.el5 #1 SMP Tue Jun 12 09:57:26 EDT 2012 i686
Driver Version	HCP 4.2.1.17028
Add-ons	

**Statistics**

Disk Safes	1
Groups	0
Users	0

Most of the information presented here is the same as the data shown in the Agents list columns.

If you click on the 🔍 icon near the CDP Server name, you will access the server details window.



**CDP Server Details for 'Serv 1'**

**Details**

**Identification**

Name	Serv 1
Description	
Status	CDP server is online
Enabled	Enabled

**Server Details**

OS Type	Linux
Product Type	Enterprise Edition
Product Version	3.14.0
License Validity	License is valid
Agents (Used/Licensed)	2 / 100
Agents with MySQL (Used/Licensed)	1 / 100
Configuration Presets	CUSTOM
Sub-Users	Enabled
Volumes	Enabled
Groups	Enabled
Power-Users	Enabled
Hosting Control Panels	Enabled

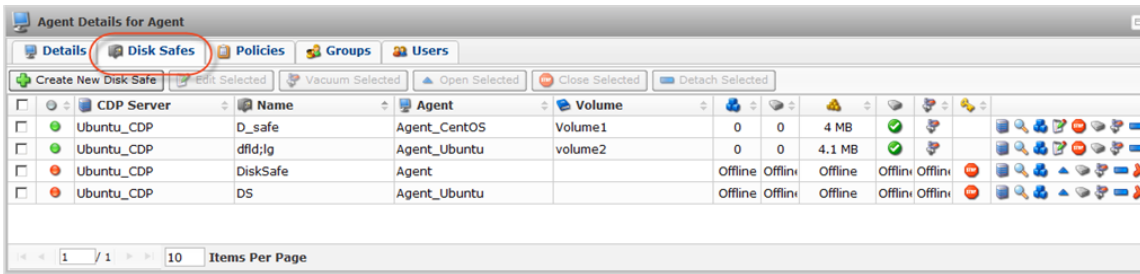
**Connection Settings**

Hostname	10.230.200.38
API HTTP Port	9080
API SSL Port	9443
COM SSL Port	5443
UI HTTP Port	80
UI SSL Port	443

For more information about server details, see [Accessing CDP Servers in Data Center Console](#).

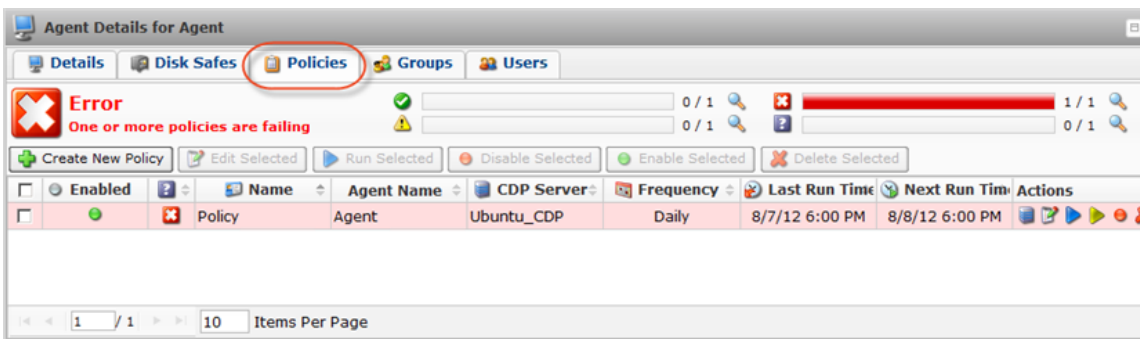
#### Disk Safes Tab

The "Disk Safes" tab is a list of Disk Safes associated with the selected Agent. This screen provides the same functionality as the main "Disk Safes" screen including adding a new Disk Safe. See the detailed description in [Monitoring Disk Safes in Data Center Console](#).

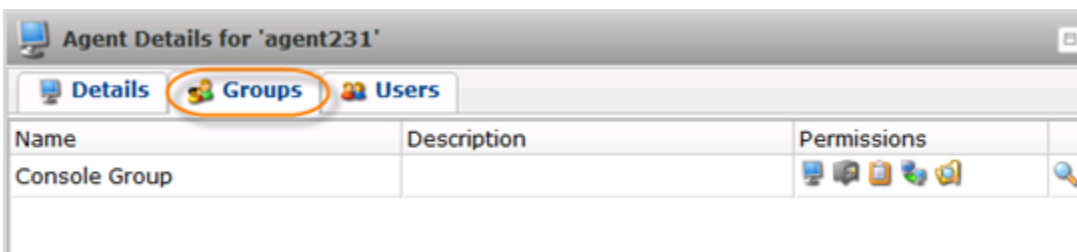


### Policies Tab

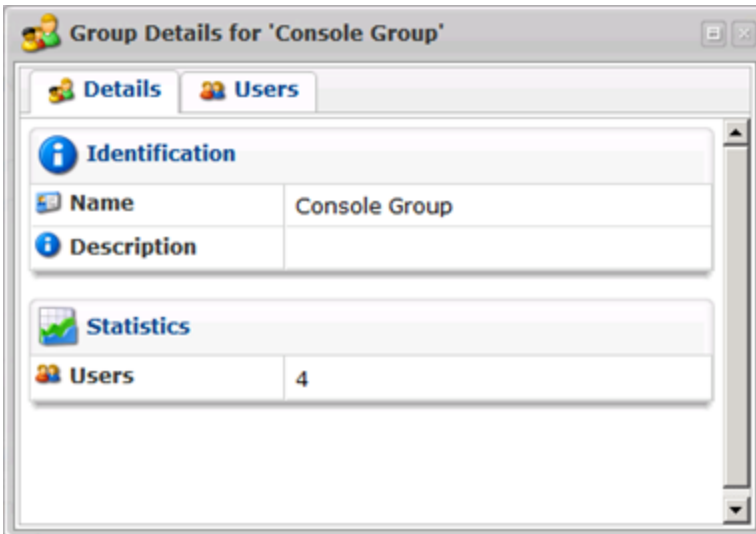
The "Policies" tab is a list of Policies associated with the selected Agent. This screen provides the same functionality as the main "Policies" screen including policy creating. See [Monitoring Policies in Data Center Console](#).



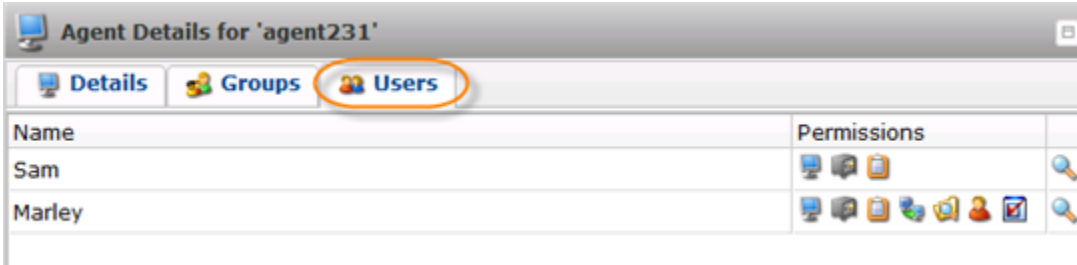
### Groups Tab




Displays the list of Groups assigned to the Agent. In the "Permissions" column, you can see the set of permissions of the current group. And if you click the icon, you can access the "Group Details" window.



Users Tab



Displays the list of Users assigned to the Agent. In the "Permissions" column, you can see the set of permissions of the current user. And if you click the  icon, you can access the "User Details" window.

