

Enabling and Disabling Users

Disabled Users cannot to log in to a CDP Server.

Enabling users

Follow the instructions below to enable Users in CDP.

1. Click on "Users" in the Main Menu.



2. In the "Users" list, find the appropriate User, and click on the "Enable" icon in the "Actions" column for this User.



Note

To find a User, you can use the Basic or Advanced List Filter. See [Customizing the Users List](#).



Note

Normal Users can only view their Sub-Users. Super Users can see all Users in the system.

3. Click "OK" in the confirmation dialog window.

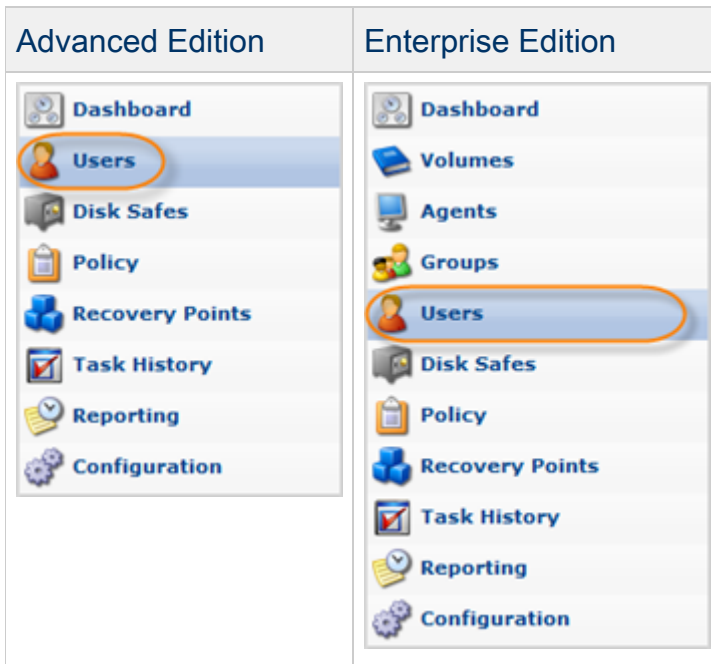
**Note**

After clicking on "OK," you will be returned to the Users list.

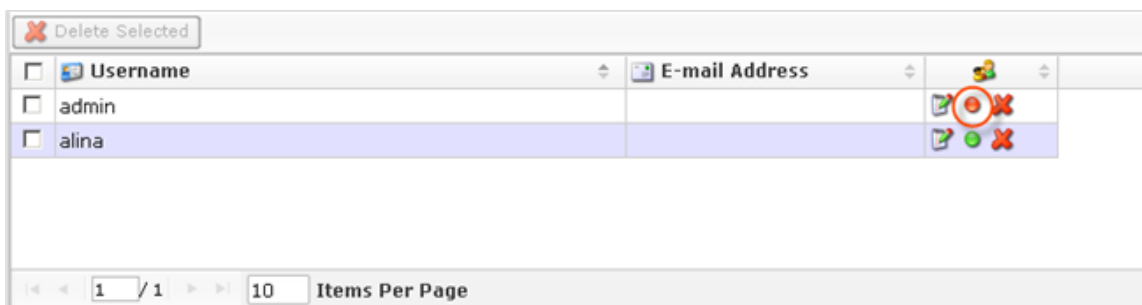
Disabling users

Follow the instructions below to disable Users in CDP.

1. Click on "Users" in the Main Menu.



2. In the "Users" list, find the appropriate User, and click on the "Disable" icon in the "Actions" column for this User.

**Note**

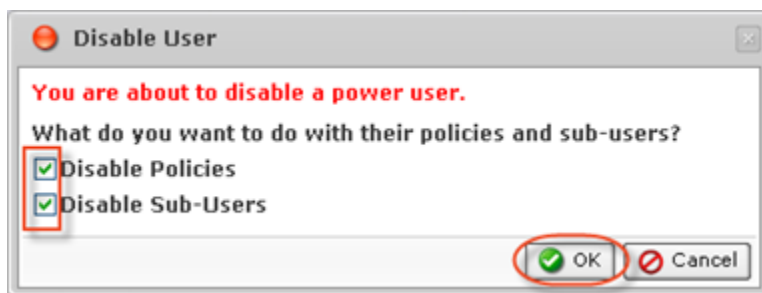
To find a User, you can use the Basic and Advanced List Filters. See [Customizing the Users List](#).

**Note**

Normal Users can only view their Sub-Users. Super Users can see all Users in the system.

3. If a Power User you want to delete has associated Policies and/or Sub-Users, then the following confirmation window will appear. You have the options to:

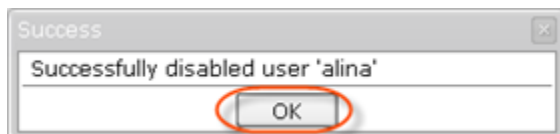
- Disable Policies - You can disable any Policies associated with Agents owned by the Power User.
- Disable Sub-Users - You may choose to disable any Sub-Users administered by the disabled Power User.



The disabling of Sub-Users and Policies is a one time event; however, an administrator may re-enable any disabled Sub-Users or Policies.

Once the required checkboxes are selected/deselected, click "OK."

4. Click "OK" in the confirmation dialog window.

**Note**

After clicking on "OK," you will be returned to the Users list.