

Deleting Users

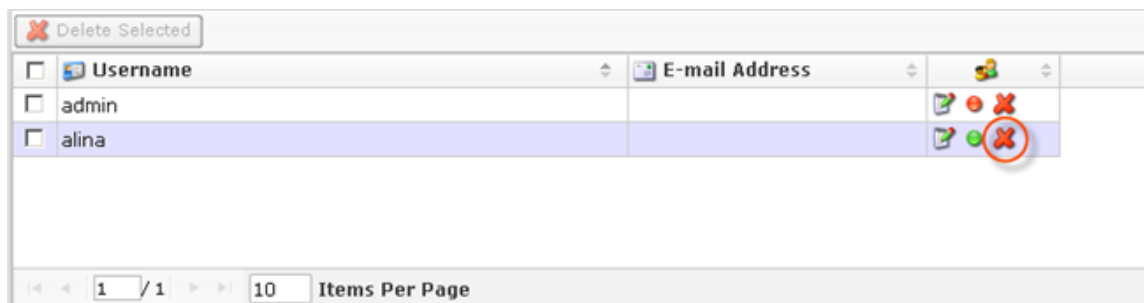
Follow the instructions below to permanently delete an existing User account from CDP.

- Note**
All user settings will be removed. If you want to add the same User later, you will have to reset all privileges.

1. Click on "Users" in the Main Menu to access the "Users" screen.



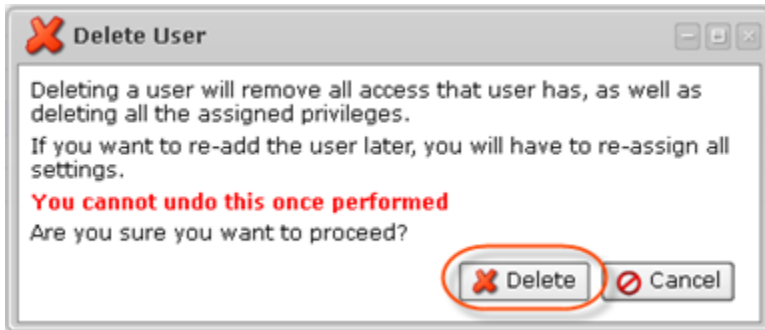
2. In the "Users" list, find the appropriate User and click on the "Delete" icon in the "Actions" column.



**Tip**

To find a User, you can use the Basic and Advanced List Filters. See [Customizing the Users List](#).

3. Confirm your request to delete the User by clicking on "Delete" in the displayed dialog.



4. The User will disappear from the "Users" list.