

Editing Disk Safes

Follow the instructions below to change **Disk Safes** in CDP.

1. Click on "Disk Safes" in the Main Menu to access the "Disk Safes" page.



2. In the "Disk Safes" list, find the Disk Safe you need and click on the "Edit" icon in the "Actions" column for this Disk Safe.

	Name	Agent Name	Volume Name				Auto Add		
<input type="checkbox"/>	cPanel	cPanel	Control Panels	23	3	2.9 GB			
<input type="checkbox"/>	DirectAdmin	DirectAdmin	Control Panels	182	2	1.8 GB	<input checked="" type="checkbox"/>		
<input type="checkbox"/>	disk1	win_agent1	Virtuozzo	0	0	3.6 MB	<input checked="" type="checkbox"/>		



Note

To find a Disk Safe, you can use the Basic and Advanced List Filters. See [Customizing the Disk Safes List](#).

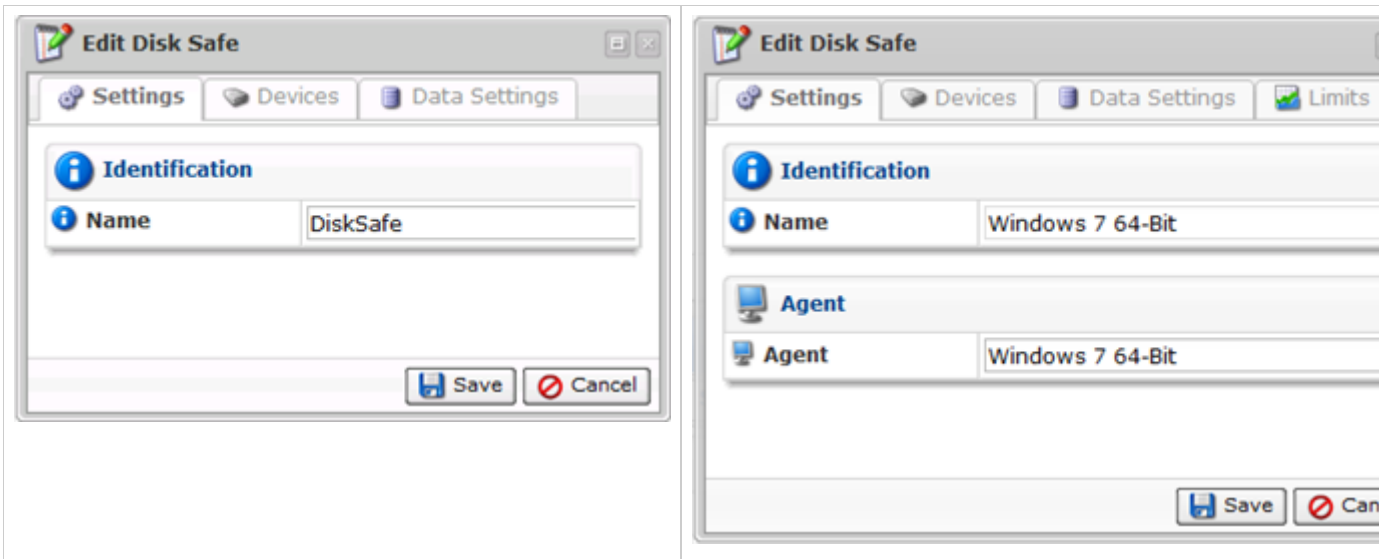


Note

You can also edit several Disk Safes at once. See [Bulk Editing](#) below.

3. The "Edit Disk Safe" window will open.

Standard, Advanced Edition	Enterprise Edition



4. The following tabs are available for editing:

- Settings
- Devices
- Data Settings
- Limits

See the description of all tabs and their properties in [Creating Disk Safes](#).

Note
You cannot change the Disk Safe location through the CDP Server Interface. See also: [Copying and Moving Disk Safes](#).

5. After you have finished editing, click on "Save" at the bottom of the window to apply the changes.



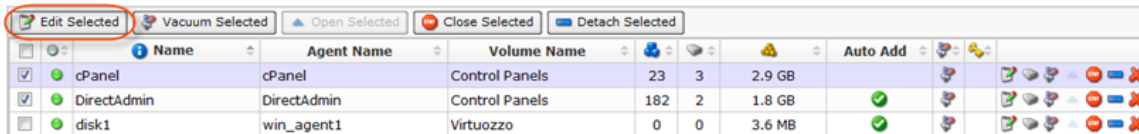
Bulk Editing

Using the "Edit Selected" button, you can change compression settings of multiple Disk Safes at once. The same values will be set for all selected items. Follow the instructions below.

1. Select several Disk Safes by selecting the checkboxes in the first column in the Disk Safes list.

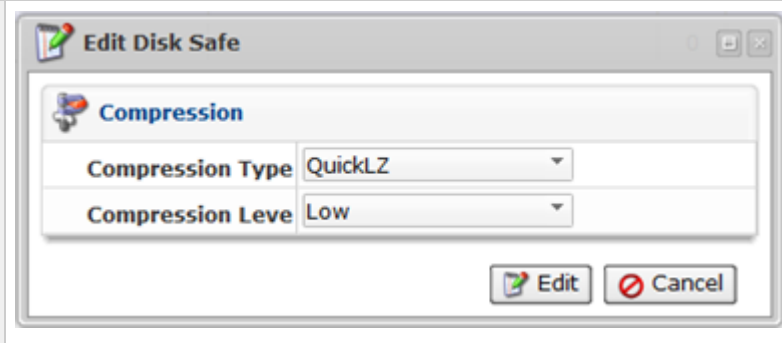
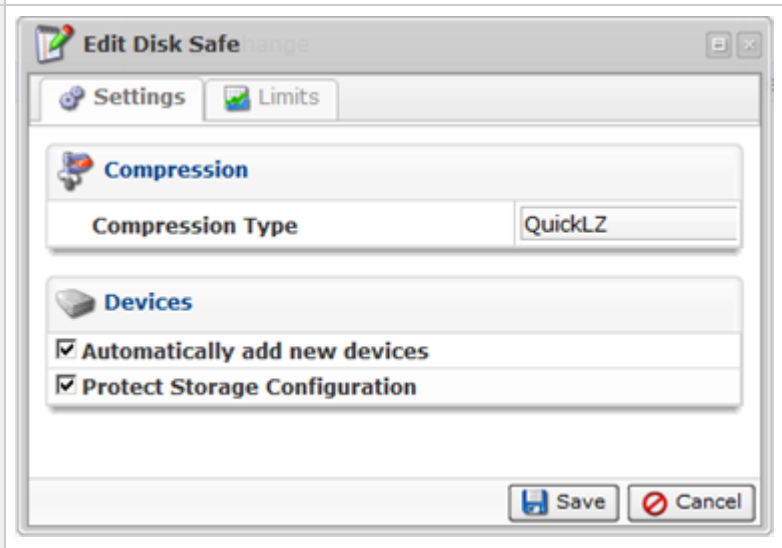
	Name	Agent Name	Volume Name				Auto Add		
<input checked="" type="checkbox"/>	cPanel	cPanel	Control Panels	23	3	2.9 GB			
<input checked="" type="checkbox"/>	DirectAdmin	DirectAdmin	Control Panels	182	2	1.8 GB	✓		
<input type="checkbox"/>	disk1	win_agent1	Virtuozzo	0	0	3.6 MB	✓		

2. Click on "Edit Selected" located in the "Disk Safes" list toolbar.



	Name	Agent Name	Volume Name				Auto Add			
<input checked="" type="checkbox"/>	cPanel	cPanel	Control Panels	23	3	2.9 GB	<input type="checkbox"/>			
<input checked="" type="checkbox"/>	DirectAdmin	DirectAdmin	Control Panels	182	2	1.8 GB	<input checked="" type="checkbox"/>			
<input type="checkbox"/>	disk1	win_agent1	Virtuozzo	0	0	3.6 MB	<input checked="" type="checkbox"/>			

3. The "Edit Disk Safe" window opens.

Standard, Advanced Edition	 <p>The "Edit Disk Safe" window for Standard and Advanced Editions displays the "Compression" section. It includes two dropdown menus: "Compression Type" set to "QuickLZ" and "Compression Level" set to "Low". At the bottom right, there are "Edit" and "Cancel" buttons.</p>
Enterprise Edition	 <p>The "Edit Disk Safe" window for Enterprise Edition features two tabs: "Settings" and "Limits". The "Settings" tab is active, showing the "Compression" section with "Compression Type" set to "QuickLZ". Below this is the "Devices" section, which contains two checked checkboxes: "Automatically add new devices" and "Protect Storage Configuration". At the bottom right, there are "Save" and "Cancel" buttons.</p>

4. In the window, edit one of the following options:

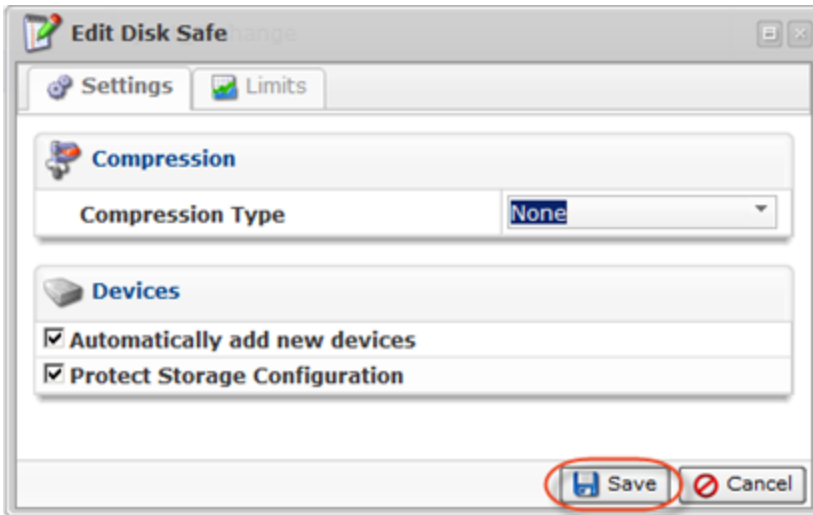
Settings Tab

- Compression Type - Define the type of compression for the Disk Safe(s). See the description in [Creating Disk Safes](#).
- Automatically add new devices - See the description in [Creating Disk Safes](#).
- Protect Storage Configuration - This option allows you to back up partition tables.

Limits Tab

See description of all the options in [Creating Disk Safes](#).

5. Click "Edit" to apply the changes to the selected Disk Safes at once.



6. In the "Disk Safes" list, the updated properties will be displayed in the appropriate column(s). In our case, in the "Compression" column, the values are "ZLIB High" and "QuickLZ".

You can also edit Disk Safes using the "Disk Safes" tab of the Agent "Details" Pane. This screen provides the same functionality as the main "Disk Safes" screen. See more information in [Accessing Agents](#).