

Locking Recovery Points

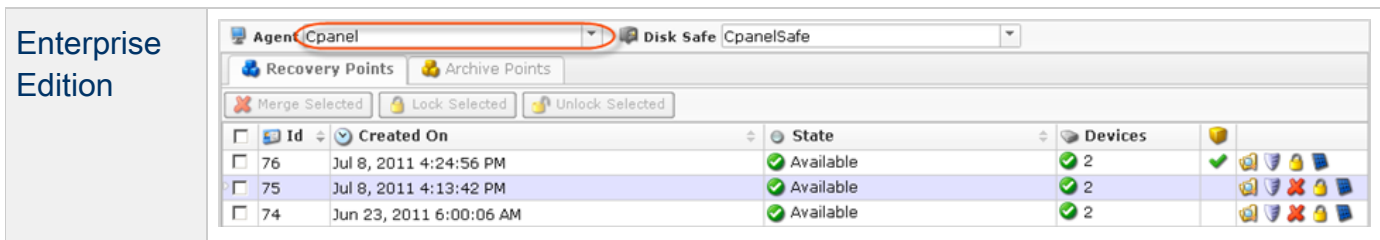
Locking [Recovery Points](#) allows you to protect them from merging (deleting) by Retention Policy or manually.

Follow the instructions below to browse file(s)/folder(s) in Recovery Points in CDP.

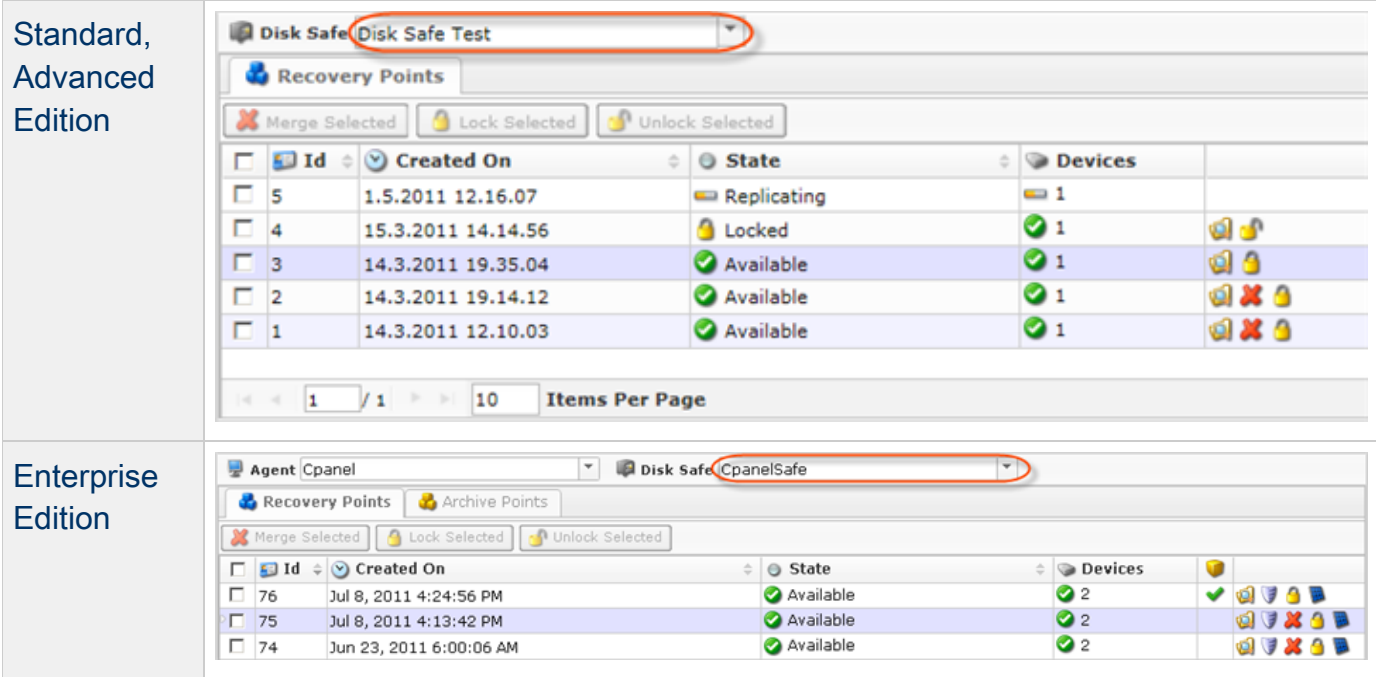
1. Click on "Recovery Points" in the Main Menu to open the "Recovery Points" window.



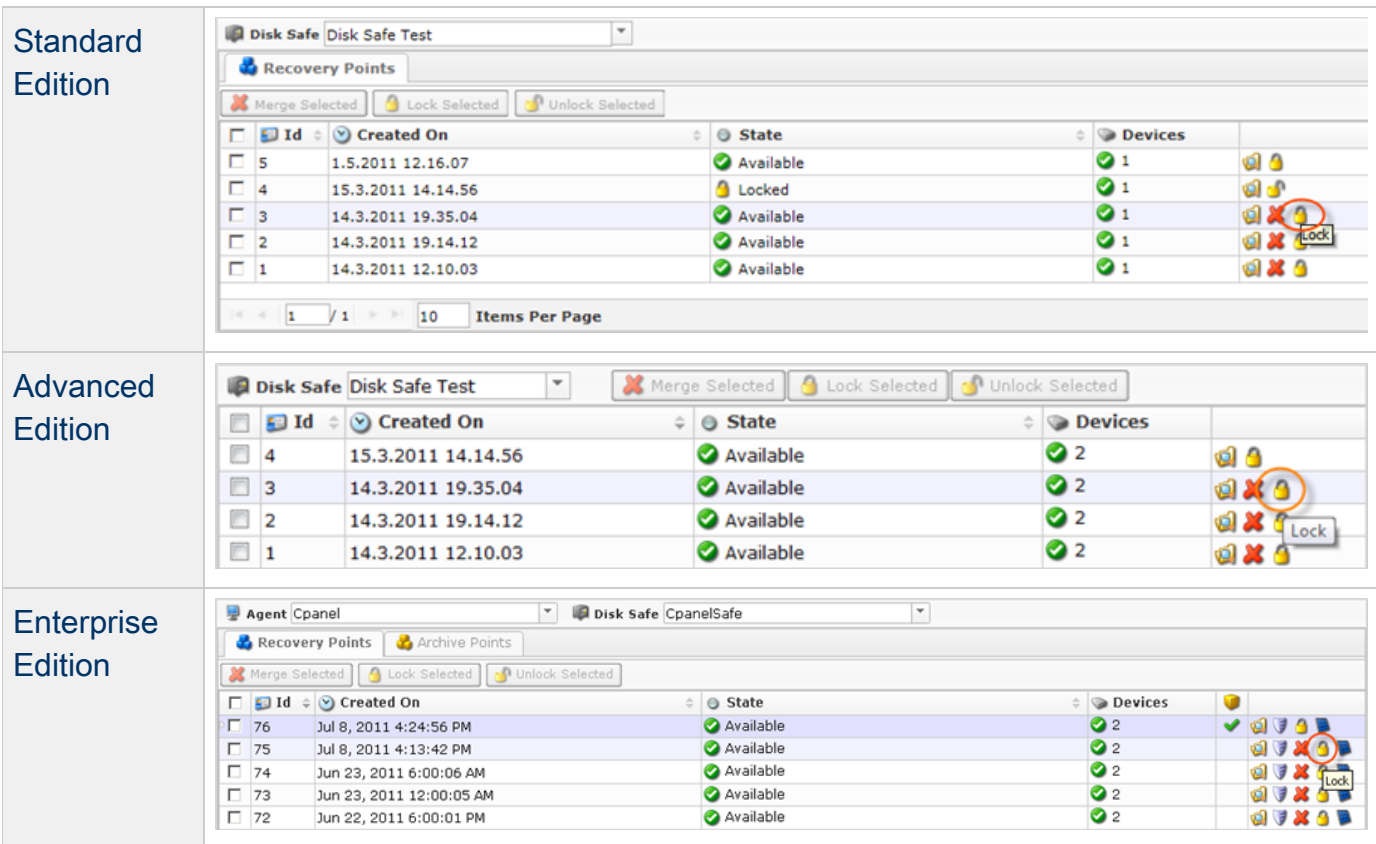
2. **Enterprise Edition:** In the "Recovery Points" list, select an Agent from the drop-down menu located on the "Recovery Points" list toolbar.



3. Select a Disk Safe from the drop-down menu located on the "Recovery Points" list toolbar.



4. In the right top area, find a Recovery Point and click on the "Lock" icon in the "Actions" column for this Recovery Point.



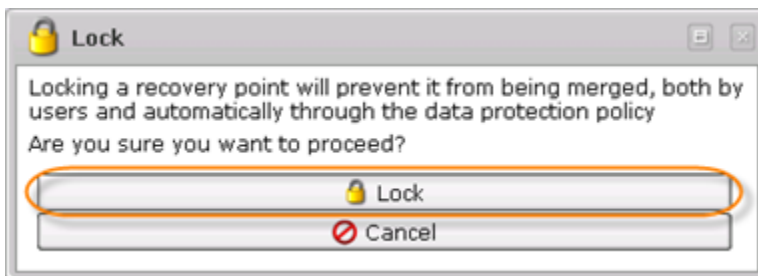
**Tip**

To find a Recovery Point, you can use the Basic and Advanced List Filters. See Customizing the Recovery Points List.

**Note**

You can lock several Recovery Points simultaneously. See below Bulk Locking.

5. Confirm your request to lock the Recovery Point by clicking on "Lock" in the displayed confirmation window.



6. You can see the "Locked" state in the "State" column in the "Recovery Points" list.

<input type="checkbox"/>	Id	Created On	State	Devices	
<input type="checkbox"/>	1528	Jun 24, 2011 3:30:03 PM	Available	2	
<input type="checkbox"/>	1526	Jun 24, 2011 1:30:21 PM	Locked	2	

Bulk Locking

Using the "Lock Selected" button, you can lock multiple Recovery Points simultaneously. Follow the instructions below.

1. Select several Recovery Points by checking check-boxes in the first column in the "Recovery Points" list.

<input type="checkbox"/>	Id	Created On	State	Devices	
<input type="checkbox"/>	1528	Jun 24, 2011 3:30:03 PM	Available	2	
<input checked="" type="checkbox"/>	1526	Jun 24, 2011 1:30:21 PM	Available	2	
<input checked="" type="checkbox"/>	1525	Jun 24, 2011 12:30:09 PM	Available	2	
<input checked="" type="checkbox"/>	1523	Jun 24, 2011 10:30:07 AM	Available	2	
<input type="checkbox"/>	1522	Jun 24, 2011 9:30:27 AM	Available	2	
<input type="checkbox"/>	1521	Jun 24, 2011 8:30:05 AM	Available	2	

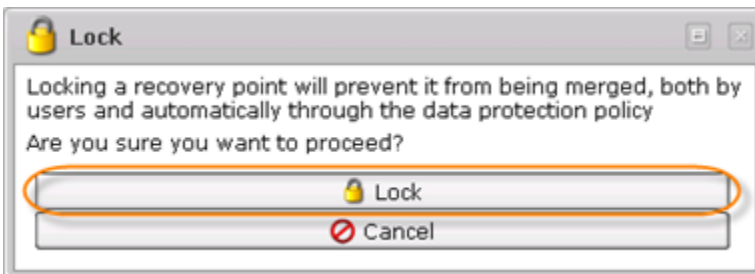
**Tip**

To find a Recovery Point, you can use the Basic Filter. See [Customizing the Recovery Points List](#).

2. Click on "Lock Selected" located in the "Recovery Points" list toolbar.

Merge Selected Lock Selected Unlock Selected					
<input type="checkbox"/>	Id	Created On	State	Devices	
<input type="checkbox"/>	1528	Jun 24, 2011 3:30:03 PM	Available	2	[Icons]
<input checked="" type="checkbox"/>	1526	Jun 24, 2011 1:30:21 PM	Available	2	[Icons]
<input checked="" type="checkbox"/>	1525	Jun 24, 2011 12:30:09 PM	Available	2	[Icons]
<input checked="" type="checkbox"/>	1523	Jun 24, 2011 10:30:07 AM	Available	2	[Icons]
<input type="checkbox"/>	1522	Jun 24, 2011 9:30:27 AM	Available	2	[Icons]
<input type="checkbox"/>	1521	Jun 24, 2011 8:30:05 AM	Available	2	[Icons]

3. Confirm your request to lock the Recovery Point by clicking on "Lock" in the displayed confirmation window.



4. You can see the "Locked" state in the "State" column in the "Recovery Points" list.

<input type="checkbox"/>	Id	Created On	State	Devices	
<input type="checkbox"/>	1528	Jun 24, 2011 3:30:03 PM	Available	2	[Icons]
<input checked="" type="checkbox"/>	1526	Jun 24, 2011 1:30:21 PM	Locked	2	[Icons]
<input checked="" type="checkbox"/>	1525	Jun 24, 2011 12:30:09 PM	Locked	2	[Icons]
<input checked="" type="checkbox"/>	1523	Jun 24, 2011 10:30:07 AM	Locked	2	[Icons]
<input type="checkbox"/>	1522	Jun 24, 2011 9:30:27 AM	Available	2	[Icons]
<input type="checkbox"/>	1521	Jun 24, 2011 8:30:05 AM	Available	2	[Icons]
<input type="checkbox"/>	1520	Jun 24, 2011 7:30:03 AM	Available	2	[Icons]