

## Configuring Network for Bare-Metal Restore

After the boot from Live CD and PXE Network Boot, you may need to configure the network settings. Follow the instructions below.



### Note

The network configuration process is the same for both two (2) boot methods.

- Live CD
- PXE Network Boot

It is the same for booting into Agent and Server environment.

1. If you have a DHCP server in your network, then the network is probably already configured. Type "`ifconfig eth0`" and press <Enter> to see if the IP address has been assigned to your network card.

```

R1Soft
Disaster Recovery -- Debian-Live Edition
Version
configure network with
tty consoles are available by pressing Alt+(F1-F8)
agent logs are on Alt+F2
r1soft-recovery:~# ifconfig eth0
  
```

You will receive the information in the format shown below.

```

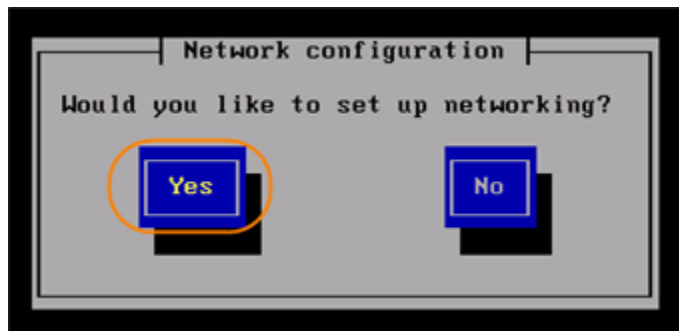
r1soft-recovery:~# ifconfig eth0
eth0      Link encap:Ethernet  HWaddr 08:0c:29:d5:cc:f8
          inet addr:10.61.200.164  Bcast:10.61.255.255  Mask:255.255.0.0
          UP BROADCAST RUNNING MULTICAST  MTU:1500  Metric:1
          RX packets:1589 errors:0 dropped:0 overruns:0 frame:0
          TX packets:2 errors:0 dropped:0 overruns:0 carrier:0
          collisions:0 txqueuelen:1000
          RX bytes:158799 (155.0 KiB)  TX bytes:684 (684.0 B)
          Interrupt:18 Base address:0x1080
  
```

2. If you do not have a DHCP server in your network or if the server assigned a wrong IP address

to your network card, you can reconfigure the network manually. Type "netconfig" without quotes at the command line. Then press the <Enter> key.



3. The next screen displays the "Network configuration" startup. Select "Yes."

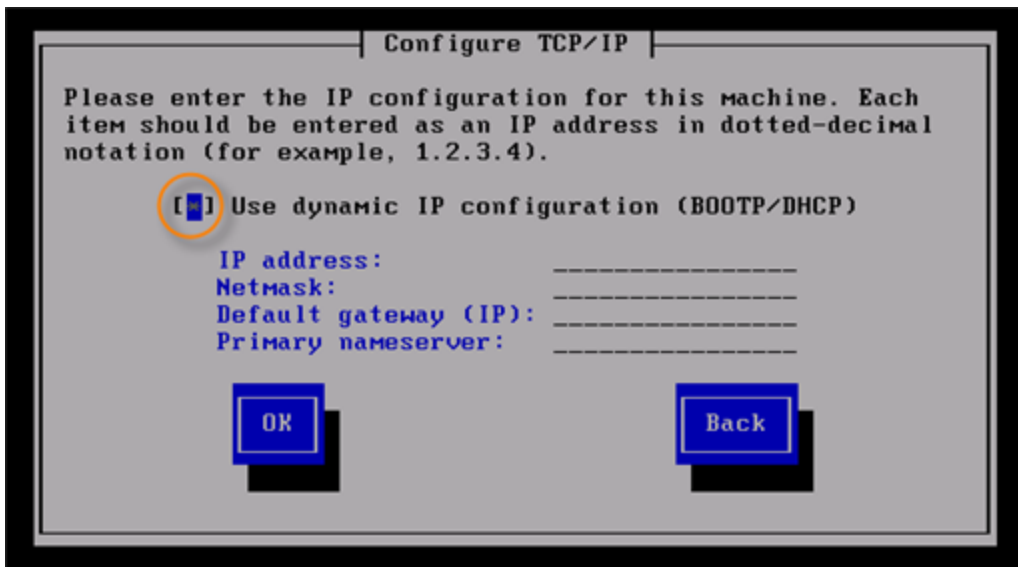


3.2. When the "Configure TCP/IP" screen has loaded, you will have two (2) options. Choose one (1) of the following options:

Option A:

Check the "Use dynamic IP configuration (BOOTP/DHCP)" option. The IP address, Netmask, Default gateway (IP), and Primary nameserver will be acquired from the DHCP server.

Use this option only when you are not satisfied with the results of the first attempt to configure the network via DHCP. For example, if the DHCP server itself has just been installed and needs fine tuning.



-OR-

Option B:

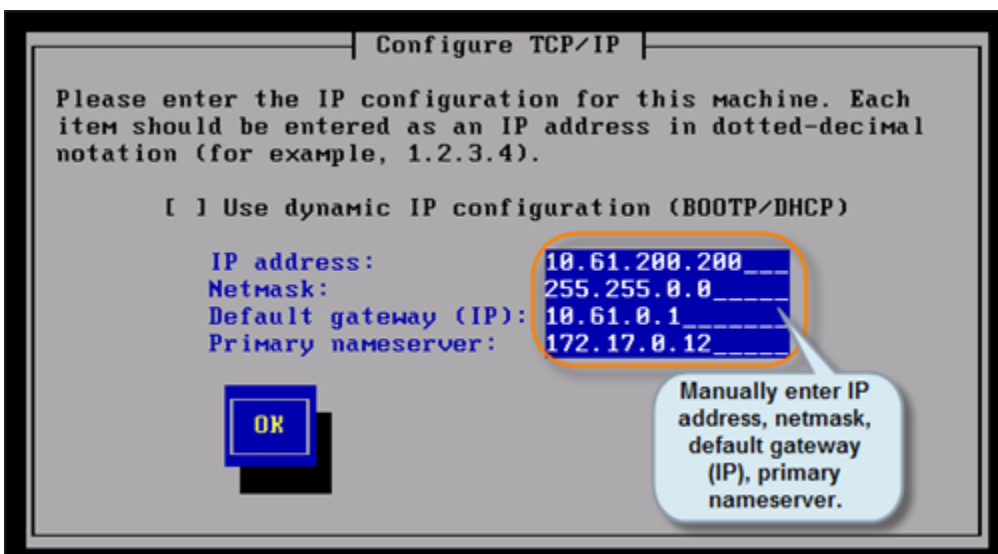
Type in the following information manually:

- IP address
- Netmask
- Default gateway (IP)
- Primary nameserver

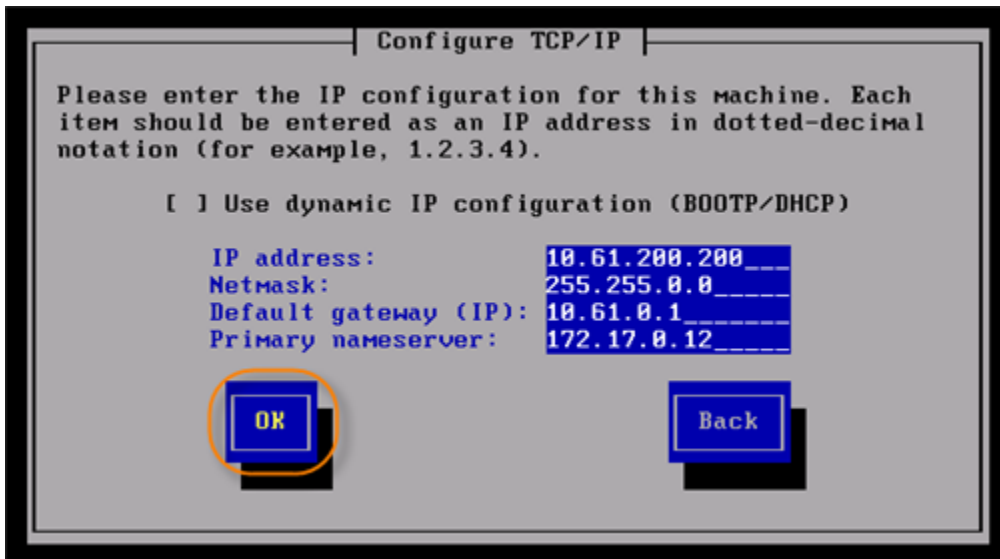


#### Note

Type IP address and press the Down arrow key on your keyboard to automatically enter the values.



3.3 Once you have selected your option in Step 3.2 above, select "OK" to continue to the Bare-Metal Restore process.



3.4 When the "Restart Network" screen has loaded, select "Yes" to restart the network configuration settings.



#### Notice

You must select "Yes." Otherwise, the network may not work properly.



3.5 When the "Start SSHD" screen has loaded, select "No." There is no need for SSH if you are performing the Bare-Metal Restore from the local console.



3.6 The next screen will display a message with the IP address of the newly configured network interface.

```
Restarting networking please wait...  
[ 593.153833] eth0: link up  
r1soft-recovery:~# _
```

4. If you are performing Bare-Metal Restore using Server Live CD or Server PXE Boot, proceed to [Configuring Bare-Metal Restore Server](#).

5. Then proceed to [Launching Bare-Metal Restore](#).