

Viewing Task Summary

Follow the instructions below to view Task information via the CDP Interface.

i Tip
You can access the summary of the last 10 finished replications and the last 10 Tasks with alerts from the Dashboard. See [Using Standard Edition Dashboard](#), [Using Enterprise Edition Dashboard](#), [Using Advanced Edition Dashboard](#).

i Tip
The Task results can be sent via email as a Report. See [Reporting](#).

1. Click on "Task History" in the Main Menu to open the "Task History" screen.



2. In the "Task History" list, find the Task you want to view the summary for and click it.

State	Alert	Type	Name	Agent Name	Scheduled	Run Time	
✓				Windows 7	1/14/11 3:30 AM	7m 51s	
✓			Backup Windows 7/Windows 7	Windows 7	1/14/11 2:58 AM	18m 21s	
✗	!		Backup Windows 7/Windows 7	Windows 7	1/13/11 4:35 PM	3s	

1 / 12 3 Items Per Page

**Tip**

To find a Task, you can use the Basic and Advanced List Filters. See [Customizing the Task History List](#).

3. Select the necessary tab in the Details pane in the right bottom part of the screen. The available list of tabs depends on the type of the selected task. The following tabs are common for all task types:

- Summary - Accumulates general information about the task including verbose status and statistics. If the task is running, displays the progress bar and performance.
- Alerts - Contains Alerts that occurred during Task run. See [Viewing Alerts](#).
- Logs - Shows logs messages received from the CDP Server and Agent. See [Viewing Log Messages](#).
- Task - Shows details about the selected Task.

[Summary Tab of a Finished Task](#) | [Summary Tab of a Running Task](#) | [Alerts Tab](#) | [Logs Tab](#) | [Task Tab](#)

Summary Tab of a Finished Task

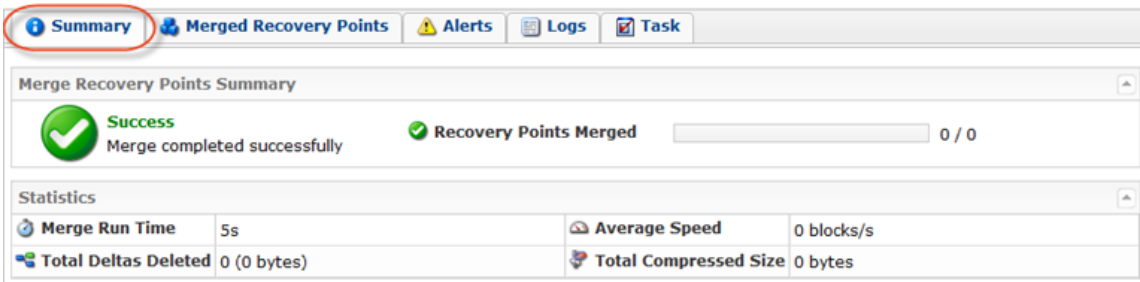
The following example provides the list of fields displayed on the "Summary" tab of a finished task.

"Summary" Block

The first block indicates whether replication policy is completed successfully or with alerts; shows the number of replicated and failed devices.

"Statistics" Block

- Merge Run Time - Indicates total amount of performance time in hours, minutes, and seconds.
- Total Deltas Deleted - Shows the ratio of deleted Deltas.
- Average Speed - Provides the average speed of the operation.
- Total Compressed Size.



Summary Tab of a Running Task

The following example provides the list of fields displayed on the "Summary" tab of a running Restore Files task.

"File Restore Summary" Block

- **State** - Graphically indicates the current State of the Task. The state can change over time. Move the mouse pointer over it to display a yellow tool tip that informs you of what the icon indicates. A Task can be in one (1) of the following states:
 - **Queued** - The Task is waiting and will run as soon as more resources are available.



Note

If the backup agent is busy, the Tasks are queued, not rejected.

- **Running** - The Task is currently in progress.
- **Finished** - The Task has completed successfully and without errors.
- **Error** - The Task has completed with one or more errors.
- **Canceled** - The Task has been terminated by the User on the "Task History" page while running.
- **Duplicate** - There is a duplicate scheduled Task in the queue.
- **Files Restored** - Amount of files restored out of total volume. For a visualization purposes the indicator bar is presented.
- **Files Failed** - Amount of files have not been restored due to different reasons.



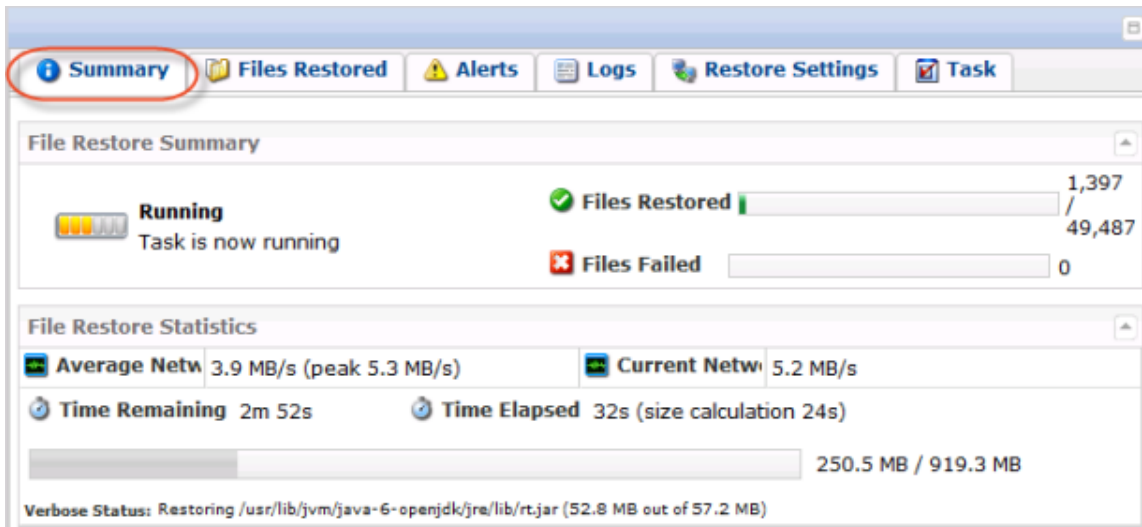
Note

"Task Finished" status is shown for Tasks not running.

"File Restore Statistics" Block

- **Average Network Rate** - Average rate of the data being transferred through internet (in MB/s or KB/s) including the peak rate (in brackets).
- **Current Network Rate** - Current rate of the data being transferred through internet (in MB/s or KB/s).

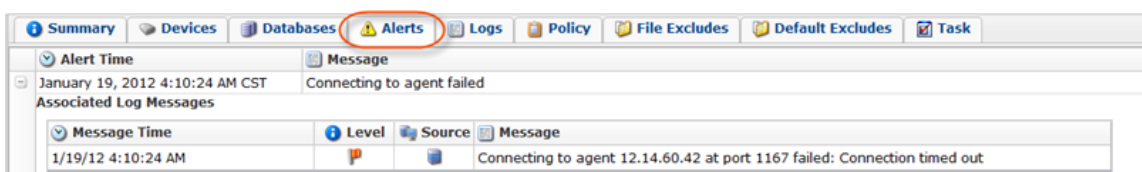
- Time Remaining - Time remaining until the Task is finished. This time is constantly re-calculated during the process according to a changing conditions.
- Time Elapsed - Time spent since the Task has been started including the size calculation (in brackets).
- Verbose Status - Shows the name of file being restored at the moment including the remaining amount of data out of total volume (in brackets).



Alerts Tab

The following example provides the list of fields displayed on the "Alerts" tab of a task.

- Alert Time - The exact date and time (in hours, minutes, and seconds) of the alerts that occurred during the task performance.
- Message - The text of a Log Message.
- Message Time - The exact date and time (in hours, minutes, and seconds) that the alert message was received.
- Level - Graphically indicates the level of the log message:
 - Info - Presents a general notification about a recent event.
 - Warning - Alerts of a perilous, detrimental event. For example, reaching soft quota.
 - Error - Informs the user that an operation could not continue or complete due to some insurmountable error.
- Source - Graphically indicates where the message has come from: CDP Server or Agent.
- Message - Contains the text of Log Message.



Logs Tab

The following example provides the list of fields displayed on the "Logs" tab of a task.

- Message Time - Displays the date and time the message was received.
- Level - Graphically indicates the level of the log message:
 - Info - Presents a general notification about a recent event.
 - Warning - Alerts of a perilous, detrimental event. For example, reaching soft quota.
 - Error - Informs the user that an operation could not continue or complete due to some insurmountable error.
- Source - Graphically indicates where the message has come from: CDP Server or Agent.
- Message - Contains the text of Log Message.

Message Time	Level	Source	Message
1/19/12 4:10:03 AM	Info	Server	Attempting to connect to agent 12.14.60.42 at port 1167
1/19/12 4:10:24 AM	Error	Server	Connecting to agent 12.14.60.42 at port 1167 failed: Connection timed out
1/19/12 4:10:24 AM	Info	Server	Task Finished

Tips

- You can filter the Log Messages. Use the checkboxes at the top of the tab.

Message Time	Level	Source	Message
1/19/12 4:10:03 AM	Info	Server	Attempting to connect to agent 12.14.60.42 at port 1167
1/19/12 4:10:24 AM	Error	Server	Connecting to agent 12.14.60.42 at port 1167 failed: Connection timed out
1/19/12 4:10:24 AM	Info	Server	Task Finished

- Click on "Download Log Msgs" to download the logs to your PC.

Message Time	Level	Source	Message
1/19/12 4:10:03 AM	Info	Server	Attempting to connect to agent 12.14.60.42 at port 1167
1/19/12 4:10:24 AM	Error	Server	Connecting to agent 12.14.60.42 at port 1167 failed: Connection timed out
1/19/12 4:10:24 AM	Info	Server	Task Finished

Task Tab

The following example provides the list of fields displayed on the "Task" tab of a task.

- State - Graphically indicates the current State of the Task. The state can change over time if the Task is still running. A Task can be in one (1) of the following states:
 - Queued - The Task is waiting and will run as soon as more resources are available.

**Note**

If Agent is busy, the Tasks are queued, not rejected.

- Running - The Task is currently in progress.
- Finished - The Task has completed successfully and without errors.
- Error - The Task has completed with one or more errors.
- Canceled - The Task has been terminated while running by the User on the "Task History" page.
- Duplicate - There is a duplicate scheduled Task in the queue.
- Running Status - For running Tasks, provides information about current action.
- Alerts - Indicates how many alerts have been received for the Task.
- Type - Graphically indicates Task type: Restore Files, Merge Recovery Points, Data Protection Policy, Vacuum, Data Base Restore, or Bare Metal Restore.
- Name - For Data Protection Policies, the name specified in the Policy properties is shown in this column.
- Task Id - Identification number generated by the system.
- Agent Name - Shows the name of the Agent.
- Agent Host Name/IP - Shows the IP address of the Agent.
- Scheduled - Date and time when a Task was scheduled.
- Start Time - Date and time when a Task was started.
- End Time - For finished Tasks, the field displays date and time when a Task was finished. For running Tasks, the field is empty.
- Run Time - Duration of a Task. For example, 45m 17s. For running Tasks, the field changes and displays the time that has passed after the Task start.
- Time in Queue - The waiting time while the task is performing.

Summary Devices Databases Alerts Logs Policy File Excludes Default Excludes Task	
State	Finished
Running Status	Task Finished
Alerts	0
Type	Data Protection Policy
Name	DirectAdmin
Task Id	f0cf53f7-0eae-407d-a0a9-1026969db8b5
Agent Name	DirectAdmin
Agent Host Name/IP	12.14.60.45
Scheduled	January 19, 2012 4:45:01 AM CST
Start Time	January 19, 2012 4:45:01 AM CST
End Time	January 19, 2012 4:45:34 AM CST
Run Time	33s
Time In Queue	0s
Execution source	CDP (Scheduled)