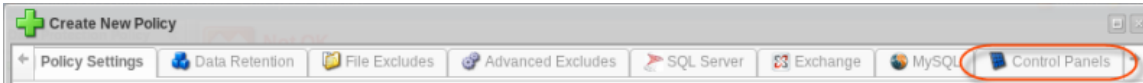


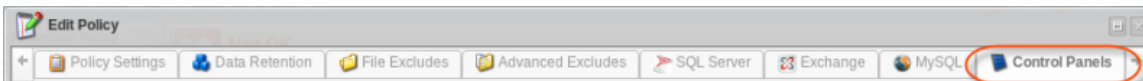
Adding Control Panel Instances

Follow the instructions below in CDP Enterprise or Advanced Edition to add a new Control Panel Instance to a Policy.

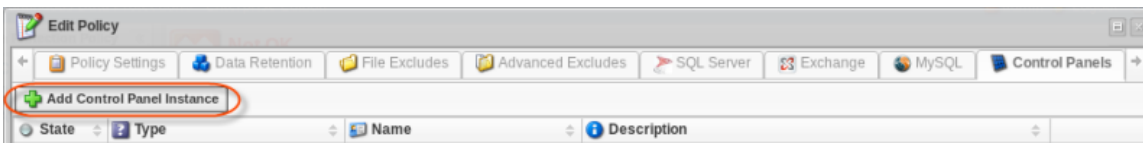
1. Select the "Control Panels" tab in the "Policy Properties" window. You can do so while [creating a new Policy](#), as shown below.



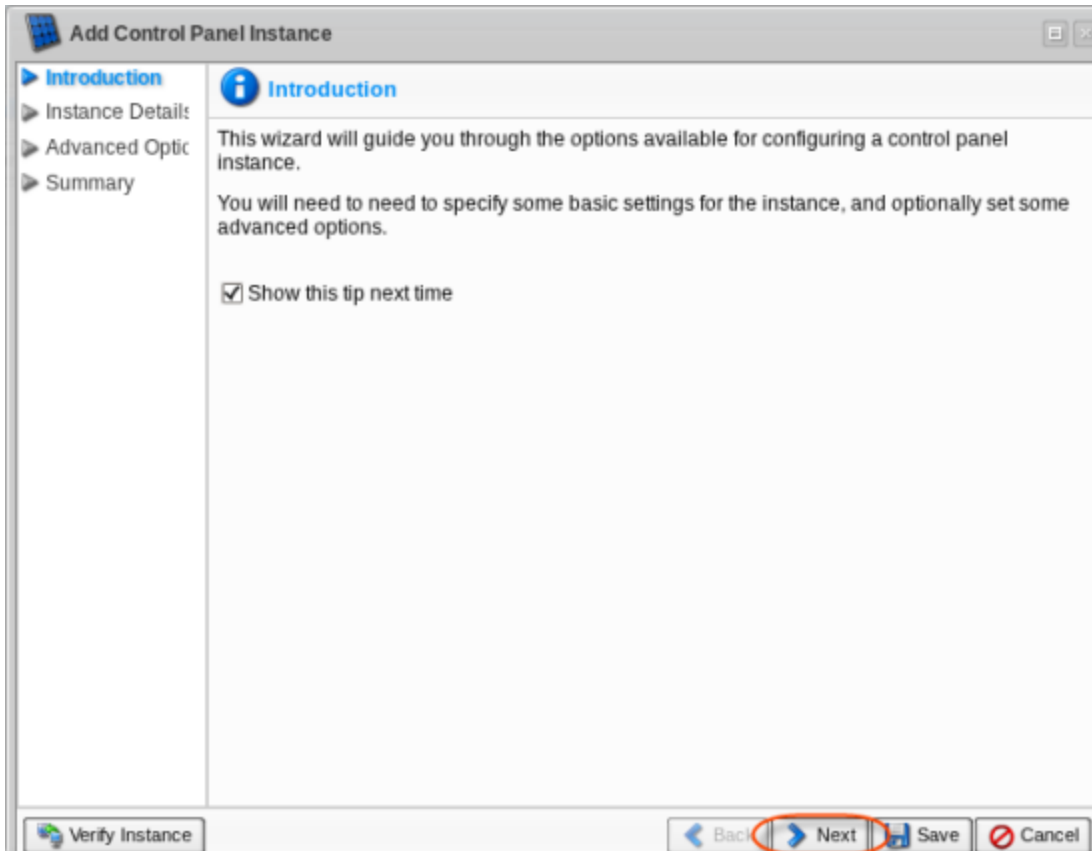
You can also select the "Control Panels" tab in the "Edit Policy" window after the Policy has been saved and even run. See [Editing Policies](#).



2. On the "Control Panels" tab of the "Edit Policy" window, click on the "Add Control Panel Instance" button.



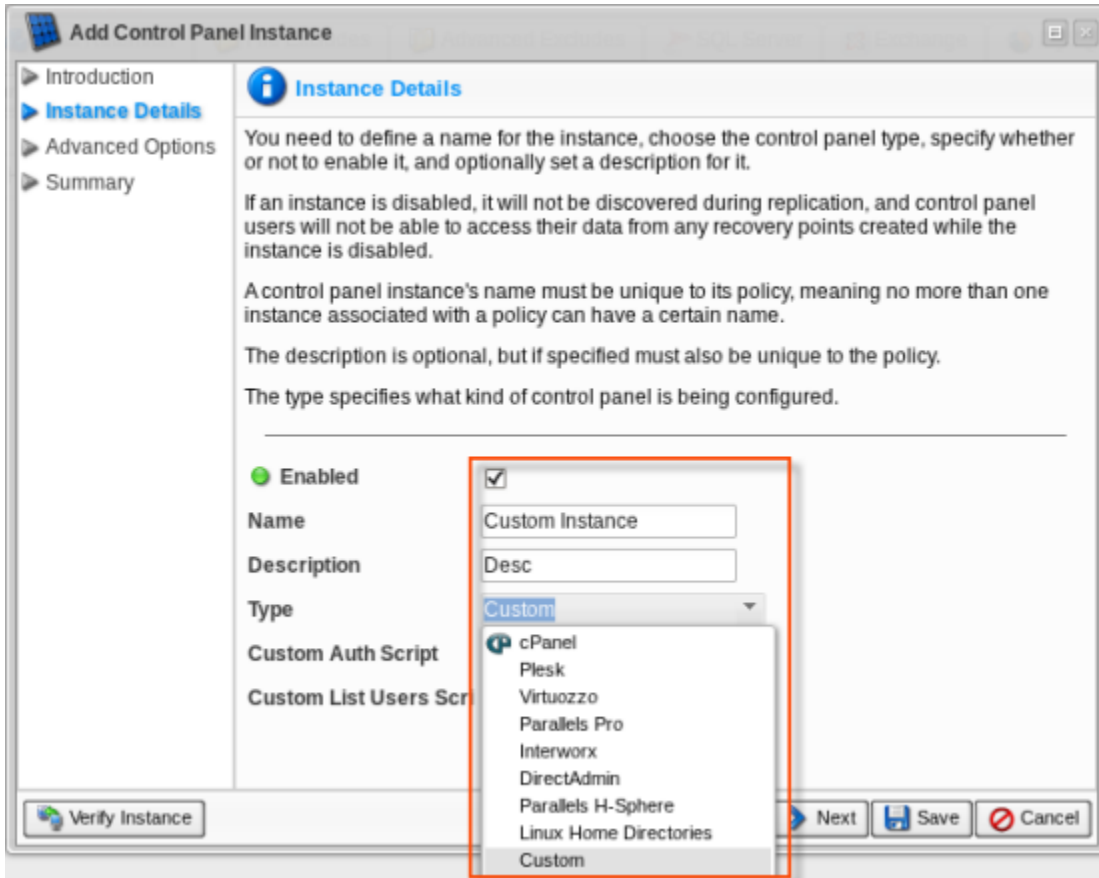
3. The "Add Control Panel Instance" window will appear. Familiarize yourself with the introductory information, and click "Next" to proceed with adding the Instance.



4. On the following "Instance Details" screen, you can define the options for your Control Panel Instance:

- Enabled - Use this check-box to enable or disable the Control Panel Instance. If an Instance is disabled, it will not be discovered during replication, and Control Panel users will not be able to access their data from any recovery points created while the Instance is disabled.
- Name - Define a name for the Control Panel Instance to identify it. A Control Panel Instance's name must be unique to its Policy, meaning that no more than one Instance associated with a Policy can have a particular name.
- Description - Enter additional information about the Control Panel Instance. This information is optional, but if specified, it must also be unique to the Policy.
- Type - This is the type of the Control Panel Instance. It specifies which type of Control Panel is being configured and can be defined as one of the following:
 - cPanel
 - Plesk
 - Virtuozzo
 - Parallels Pro
 - Interworx
 - DirectAdmin
 - Parallels H-Sphere
 - Linux Home Directories

- Custom



The "Custom" option allows you to add your own Perl script to use a new type of Control Panel. If using this option, you must fill in two additional fields: "Custom Auth Script" and "Custom List Users Script."

The screenshot shows the 'Add Control Panel Instance' dialog box with the 'Instance Details' tab selected. The dialog has a sidebar with 'Introduction', 'Instance Details', 'Advanced Options', and 'Summary'. The main area contains instructions and a form. The 'Enabled' checkbox is checked. The 'Name' field contains 'Custom Instance', 'Description' contains 'Desc', and 'Type' is set to 'Custom'. The 'Custom Auth Script' and 'Custom List Users Scri' fields are highlighted with a red box and contain 'custom-auth.pl' and 'custom-listusers.pl' respectively.

Add Control Panel Instance

Instance Details

You need to define a name for the instance, choose the control panel type, specify whether or not to enable it, and optionally set a description for it.

If an instance is disabled, it will not be discovered during replication, and control panel users will not be able to access their data from any recovery points created while the instance is disabled.

A control panel instance's name must be unique to its policy, meaning no more than one instance associated with a policy can have a certain name.

The description is optional, but if specified must also be unique to the policy.

The type specifies what kind of control panel is being configured.

Enabled

Name: Custom Instance

Description: Desc

Type: Custom

Custom Auth Script: custom-auth.pl

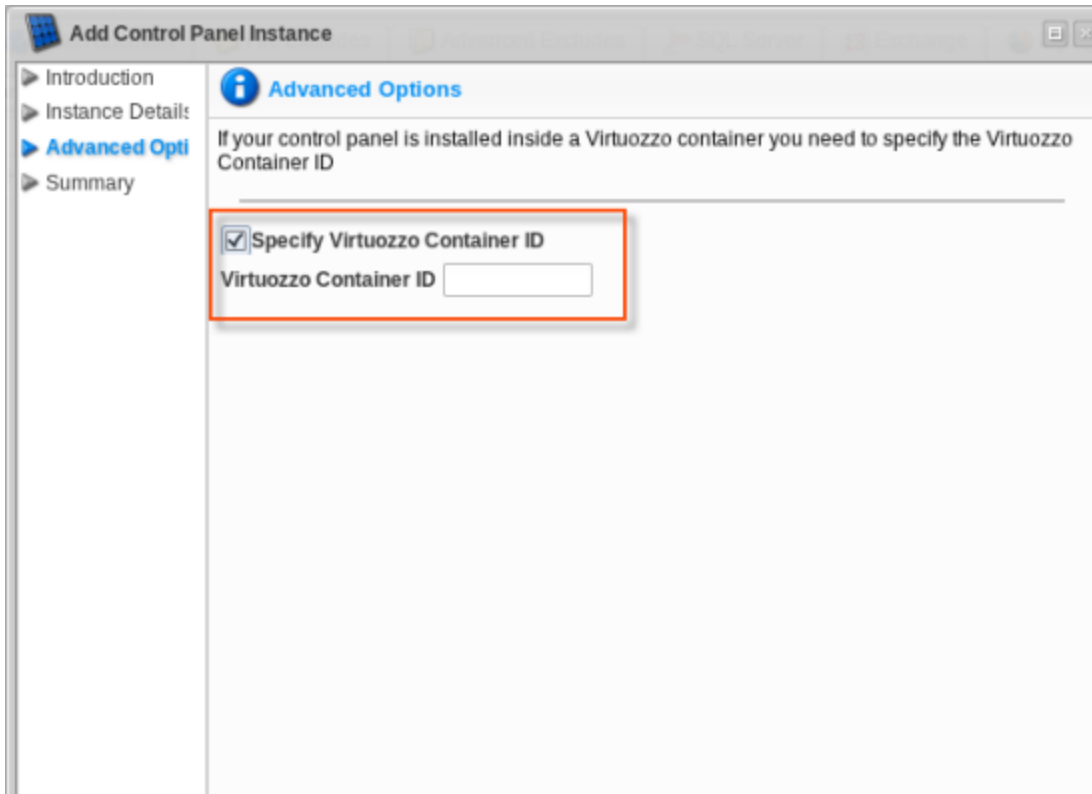
Custom List Users Scri: custom-listusers.pl

Click "Next."

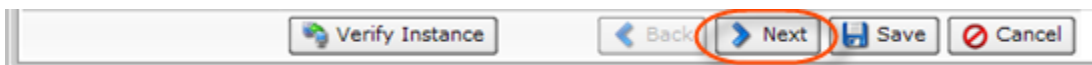
The screenshot shows the footer of the dialog box with four buttons: 'Verify Instance', 'Back', 'Next', 'Save', and 'Cancel'. The 'Next' button is highlighted with a red circle.

Verify Instance Back Next Save Cancel

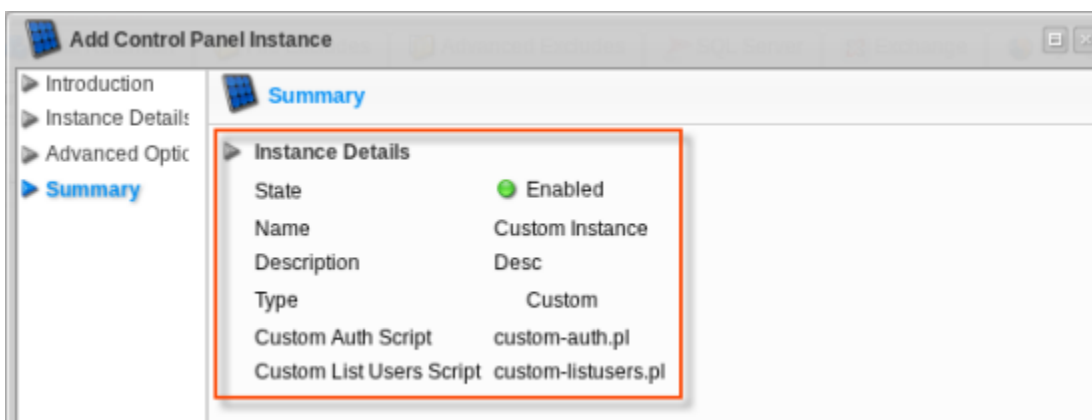
5. If your Control Panel is installed inside a Parallels Virtuozzo Containers (PVC) container, you need to specify the Virtuozzo Container ID (for cPanel, Plesk, Parallels Pro, Interworx, or DirectAdmin types). This advanced option is not available for the Virtuozzo Control Panel type.



6. Click "Next."



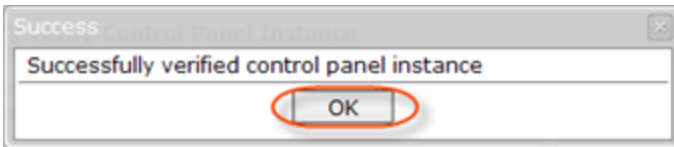
7. On the last "Summary" screen, the settings you have selected will be listed.



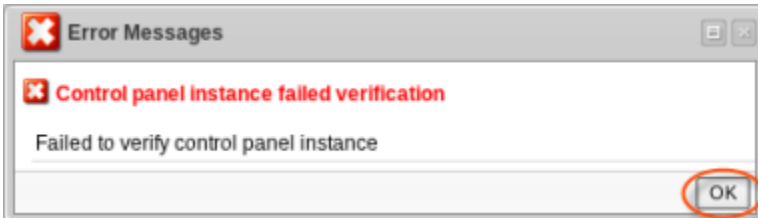
8. You can verify the Instance before saving by clicking the "Verify Instance" button.



If the verification is successful, a dialog window will appear. Click "OK."

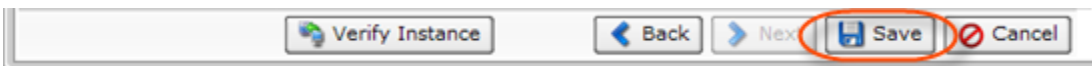


If the verification fails, the "Error Messages" window will appear. This means that CDP cannot find the Control Panel type you specified. Make sure you have selected the correct Control Panel type.

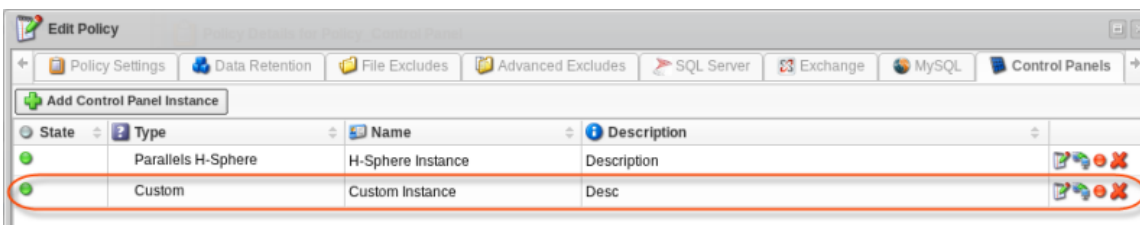


Click "OK" and try to fix the error. Then verify the Instance again.

9. Once you have verified that the specified settings are correct, click "Save" to add your Control Panel Instance to the Policy.



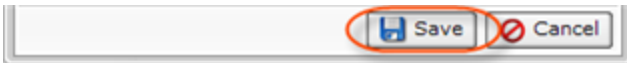
10. The wizard screen will close, and the added Control Panel Instance will appear on the "Control Panels" tab of the "Edit Policy" window. Instance options are displayed in the appropriate columns.



The following actions over the Control Panel Instance are available via the icons:

- Edit - Allows you to change and add Instance options.
- Verify Instance - Verifies that the Instance actually exists on the specified agent.
- Disable - Disables the Instance. This will prevent the Instance from being discovered during replication, and Control Panel users will be unable to log in to the CDP Server to retrieve their data.
- Delete - Removes the Instance without prompting you to confirm.

11. Click on the "Save" button in the "Edit Policy" window to save your changes.



12. Once you have added the Control Panel Instance to the Policy, the system will display a direct link to CDP for Control Panel users in the "Login" column. Using the link, users can access their backups and restore data as a .zip or .tar file. To log in, they must use their Control Panel credentials.

Continuous Data Protection® - Enterprise Edition

Data Protection Policy: **OK** Policies are OK

1 / 1 0 / 1 0 / 1

Edit Selected Run Selected Disable Selected Enable Selected Delete Selected

Name	Disk S	Agent Nar	Frequency	Last Run Time	Next Run Time
Policy_Coi	DiskSafe	Agent	On Demand	27-Jun-12 06:42 AM	--

1 / 1 10 Items Per Page

Policy Details for Policy_Control Panel

Policy Settings Data Retention File Excludes MySQL SQL Server Exchange Control Panels

State Enabled Disabled Type cPanel Plesk Virtuozzo Parallels Pro Interworx DirectAdmin Parallels H-Sphere

State	Type	Name	Control pa	Login	Download Plugin
<input checked="" type="checkbox"/>	Parallels H-Sphere	H-Sphere Instance	dc6d247f-a112-4b9f-a8c4-077921f	Control panel end-user login link	
<input checked="" type="checkbox"/>	Custom	Custom Instance	90781eff-262e-4b3b-a3f1-6f5c1309	Control panel end-user login link	