

Configuring Product Features

A CDP administrator can configure the interface of the product to make it more accessible and easy to use. This is done by hiding some menu options and product features that are not required by some users.

When upgrading CDP to a version of 3.14 or greater, the system will select a configuration based on the objects that are present in your CDP Server.

- Example: If you use Volumes and sub users, you can only choose "Service Provider with Multi-level Reselling;" other options are greyed out (not available).
- Example: If you use Volumes, sub users, and groups, you can only use custom settings.

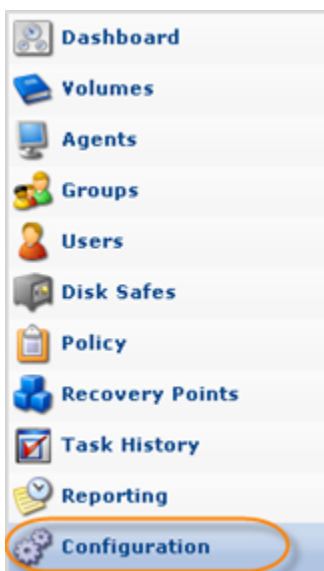


Note

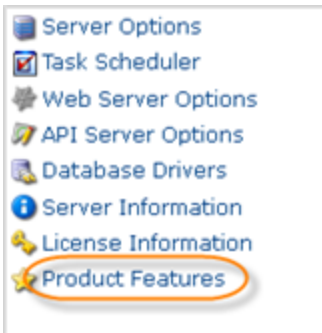
The changes are not permanent and can be reverted at any time.

Follow the instructions below to configure the Product Features.

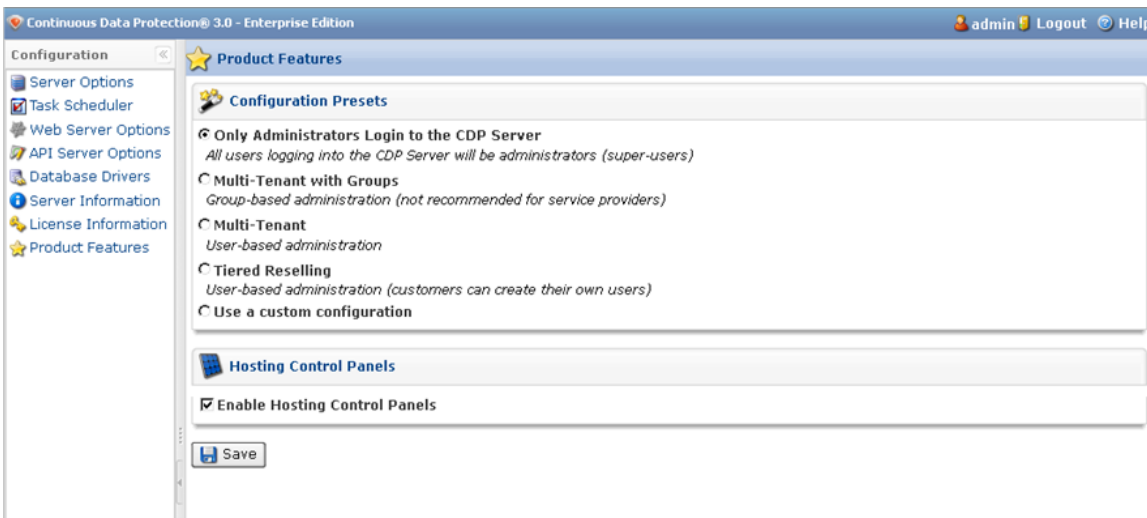
1. Click on "Configuration" in the Main Menu to open the "Configuration" window.



2. In the "Configuration" menu, select "Product Features."



3. The "Product Features" window will appear.



The following configurations are available:

- Configuration Preset
 - Only Administrators Login to the CDP Server
 - Multi-Tenant with Groups
 - Multi-Tenant
 - Tiered Reselling
 - Use a Custom Configuration
- Hosting Control Panels
 - Enable Hosting Control Panels

Note

You can only use configurations that are compatible with your current objects (Users, Groups, Volumes). Other configurations are greyed out.

Configuration Presets | Hosting Control Panels

Configuration Presets

Only Administrators Login to the CDP Server



This configuration is suitable for:

- Hosting companies managing their own servers;
- Smaller enterprises;
- Smaller deployments.

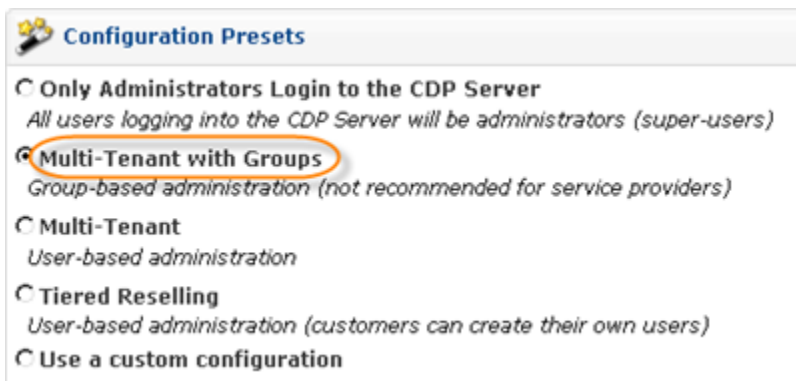
Properties:

- Volumes are hidden;
- Power and Sub-Users are hidden (Super-Users only);
- Groups are hidden.

The configuration cannot be selected if:

- Any Volumes are defined on the CDP server
- Any Power-Users are defined on the CDP server
- Any Sub-Users are defined on the CDP server
- Any Groups are defined on the CDP server

Multi-Tenant with Groups



This configuration is suitable for:

- Enterprises that delegate authority to different users or teams.

Properties:

- Volumes are visible;
- Power-Users are visible and Sub-Users are hidden. Agents can have a Power-User Owner;
- Groups are visible;
- Only Groups can have permissions on Agents or Volumes (not Users).

The configuration cannot be selected if:

- Any Sub-Users are defined on the CDP server
- Any Power-Users are assigned to Volumes on the CDP server

Multi-Tenant



This configuration is suitable for:

- Multi-tenant hosting companies;
- Managed hosting companies, where customers can check backups or restore.

Properties:

- Volumes are visible;
- Power-Users are visible and Sub-Users are hidden. Agents can have a Power-User Owner;
- Groups are hidden;
- Only Power-Users can have permissions on Agents or Volumes (not Groups);
- Each customer gets a Power-User and one or more Volumes.

The configuration cannot be selected if:

- Any Groups are defined on the CDP server
- Any Sub-Users are defined on the CDP server

Tiered Reselling

 **Configuration Presets**

Only Administrators Login to the CDP Server
All users logging into the CDP Server will be administrators (super-users)

Multi-Tenant with Groups
Group-based administration (not recommended for service providers)

Multi-Tenant
User-based administration

Tiered Reselling
User-based administration (customers can create their own users)

Use a custom configuration

This configuration is suitable for:

- Service Providers that allow customers renting space to resell space on CDP.

Properties:

- Volumes are visible;
- Power-Users are visible and Agents can have a Power-User Owner;
- Sub-Users are visible;
- Groups are hidden;
- Only Power-Users can have permissions on Volumes (not Groups or Sub-Users);
- Sub-Users or Power-Users can have permission on Agents (not Groups);
- Each customer gets a Power-User and one or more Volumes and can create Sub-Users and Disk Safes.

The configuration cannot be selected if:

- Any Groups are defined on the CDP server
- Any Sub-Users are assigned to Volumes on the CDP server

Custom

 **Configuration Presets**

Only Administrators Login to the CDP Server
All users logging into the CDP Server will be administrators (super-users)

Multi-Tenant with Groups
Group-based administration (not recommended for service providers)

Multi-Tenant
User-based administration

Tiered Reselling
User-based administration (customers can create their own users)

Use a custom configuration

Power-Users

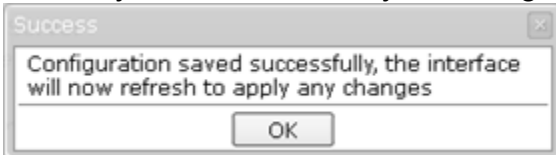
Sub-Users

Groups


Volumes

In this configuration you can disable Power-Users, Sub-Users, Volumes or Groups by unchecking the corresponding checkboxes.

4. After you have selected your configuration, click "Save." You will see the following message:



Hosting Control Panels

 **Hosting Control Panels**

Enable Hosting Control Panels

- Enable Hosting Control Panels - Use this checkbox to enable the Hosting Control Panels Add-on.

For more information about Control Panels, please, visit the [CDP for Hosting Control Panels](#) section.