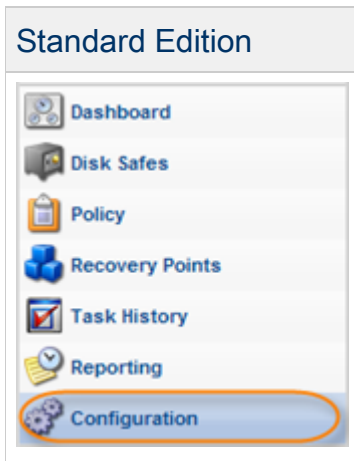


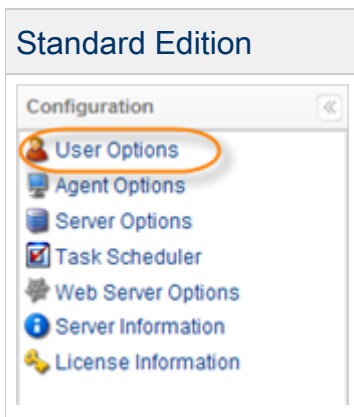
Configuring User Options

Follow the instructions below to change your Username or Password in CDP Standard Edition.

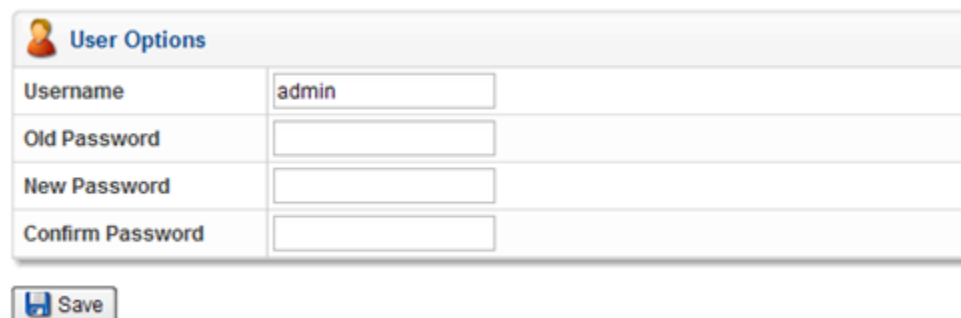
1. Click on "Configuration" in the Main Menu to open the "Configuration" window.



2. In the "Configuration" menu, click on "User Options."



3. The "User Options" window opens.



A screenshot of the 'User Options' window. The window title is 'User Options'. It contains a form with the following fields:

Username	<input type="text" value="admin"/>
Old Password	<input type="password"/>
New Password	<input type="password"/>
Confirm Password	<input type="password"/>

Below the form is a 'Save' button with a floppy disk icon.

4. You can define the following options:

- Username - To change your Username, enter a new one instead of the current one.
- Password - To change your password, do the following:
 1. Type your current password in the "Old Password" field.
 2. Type the new password in the "New Password" field.
 3. Type the new password one more time in the "Confirm Password" field.

5. Click on "Save."



See also:

- [Setting CDP Server Users](#)
- [Adding Users \(Enterprise Edition\)](#)
- [Editing User Properties \(Enterprise Edition\)](#)