

# Installing Data Center Console on Windows

Unlike CDP Server products that are installed in one step, Data Center Console (DCC) requires some configuration prior to the installation as well as some additional manual steps after the initial install of the software package.

Read about the previous step here: [Prerequisites for Installing Data Center Console](#).

Follow the instructions below to install and configure Data Center Console on Windows.

---

[Installing Data Center Console on Windows](#) | [Installing MySQL Java Connector](#) | [Configuring Database Properties](#) | [Starting the Data Center Console](#) | [Accessing Data Center Console for the First Time](#)

---

## Installing Data Center Console on Windows

1. Log on to the Windows server as a member of the local Administrators group.



### Notice

You should install Data Center Console on an independent host that does not have a CDP Server installed.

2. Navigate to the directory where you saved the Data Center Console installation file. The installer will have a name that is similar to the following:

- File name: `R1Soft-CDP-DataCenter-Console-win64-4.2.0.exe`.

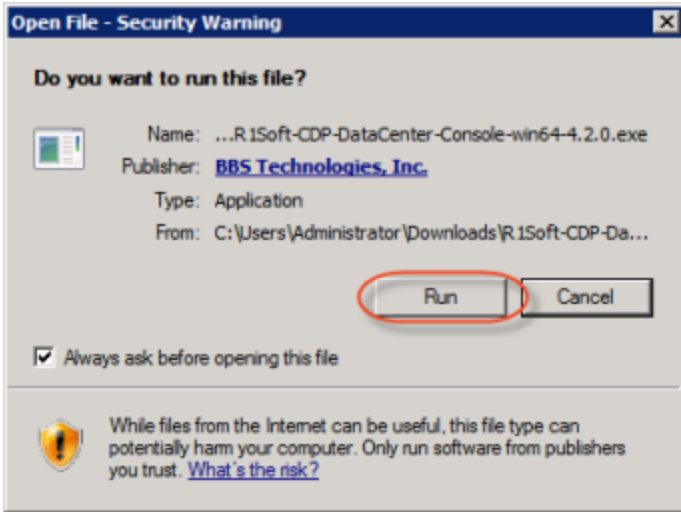


### Note

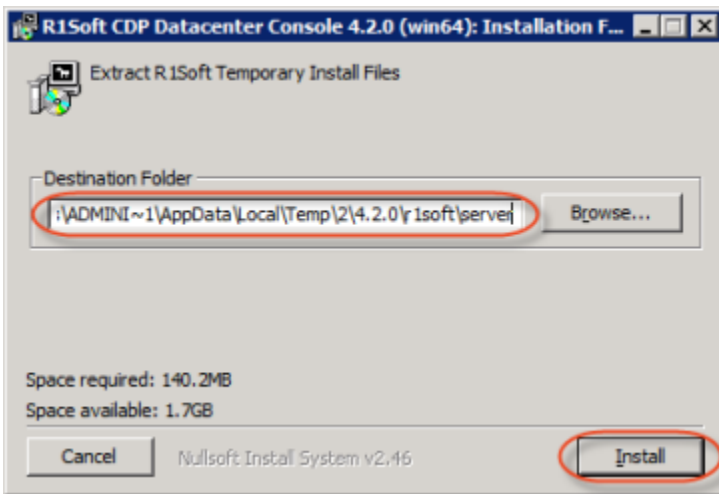
Make sure that you have a 64-bit version of the Windows operating system.

3. Execute the installer by double-clicking

`R1Soft-CDP-DataCenter-Console-win64-4.2.0.exe`. In the next window, click "Run."

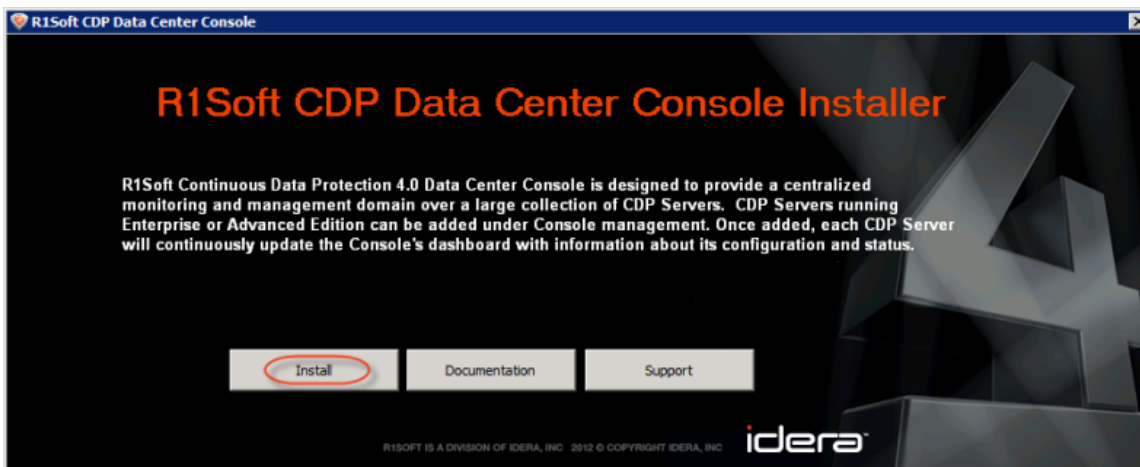


4. In the next window, select a destination folder and click "Install."

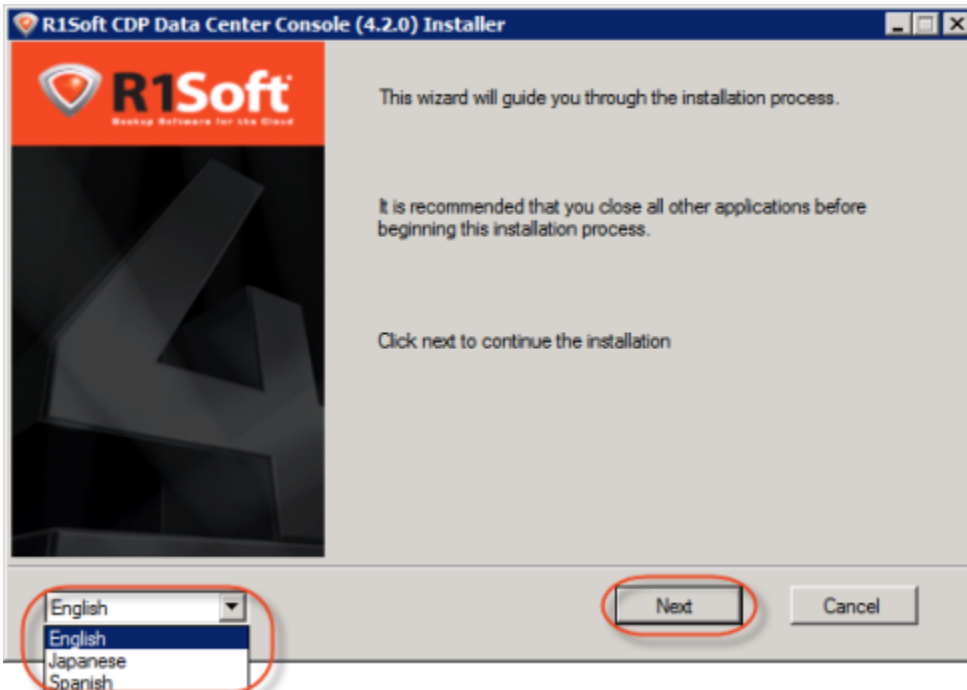


5. Wait while the files are extracted.

6. The "R1Soft CDP Data Center Console Installer" window appears. Click "Install."



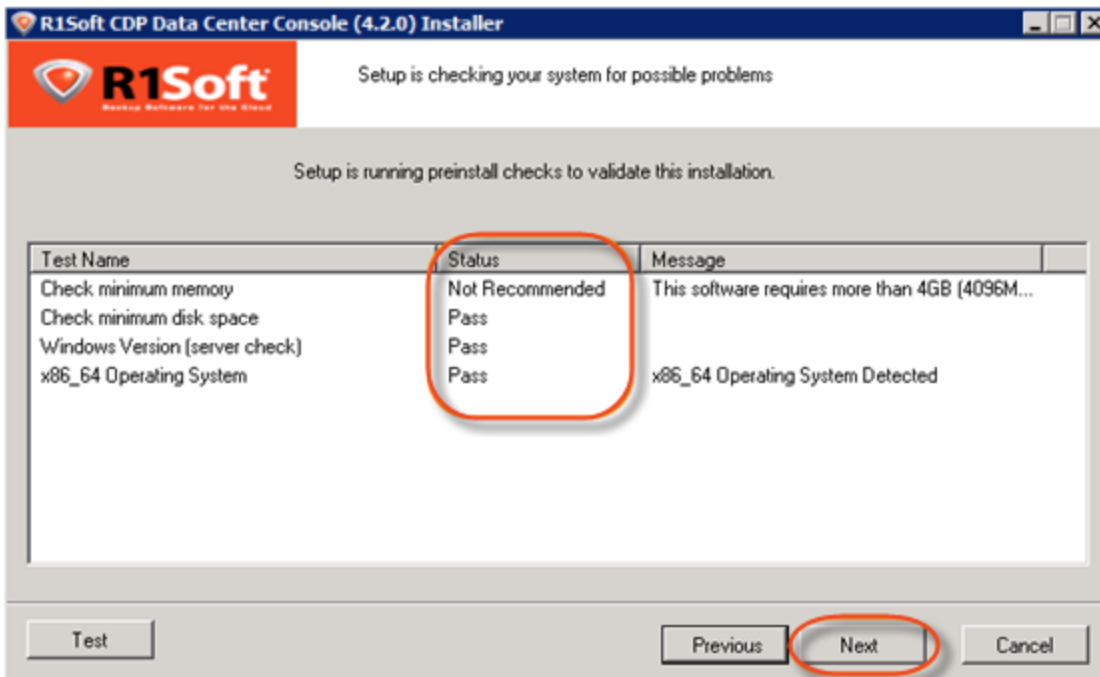
7. Select the language for Data Center Console and click "Next."



8. The next screen will display the "End-User License Agreement." Read it to the end, select the "I accept..." check-box, and then click "Install."

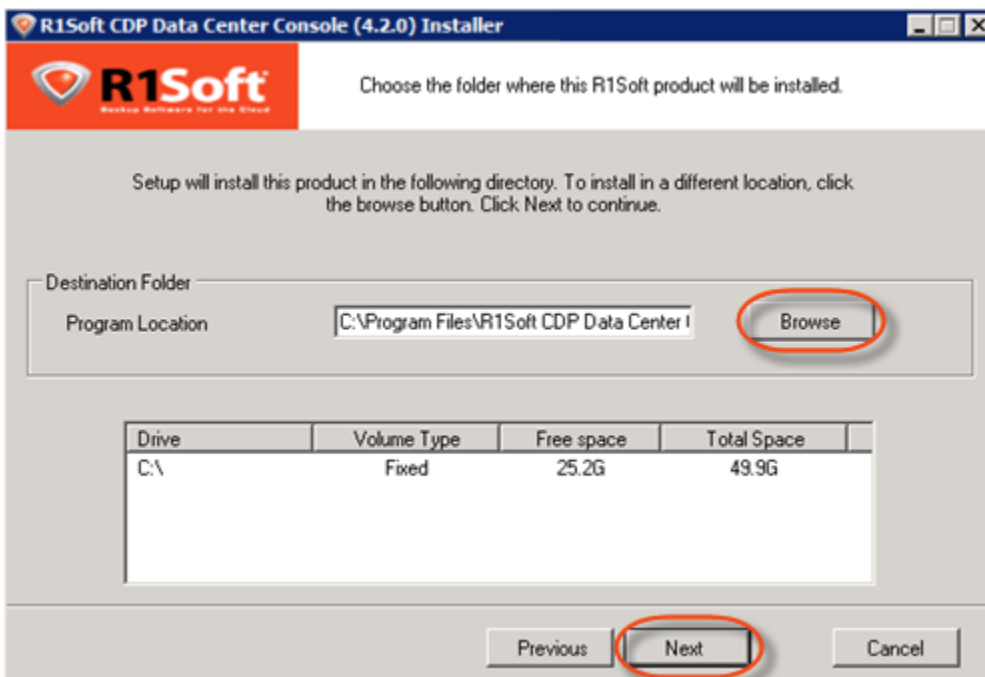


9. The installer will check your system for possible problems.



The possible values for the "Status" column are "Pass," "Not Recommended," and "Fail." It is preferable that all tests have a "Pass" status. However, it is still possible to continue the installation with a "Not Recommended" status. Click "Next."

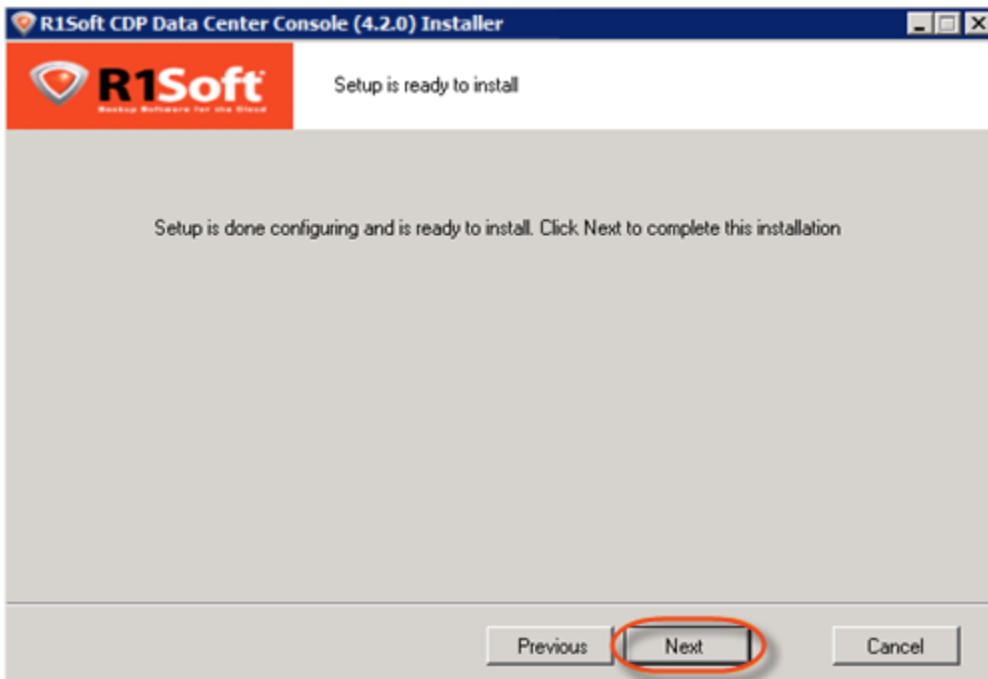
10. On the next screen, choose the installation directory for the Console. It is safe to leave the default location unchanged. Click "Next" to continue.



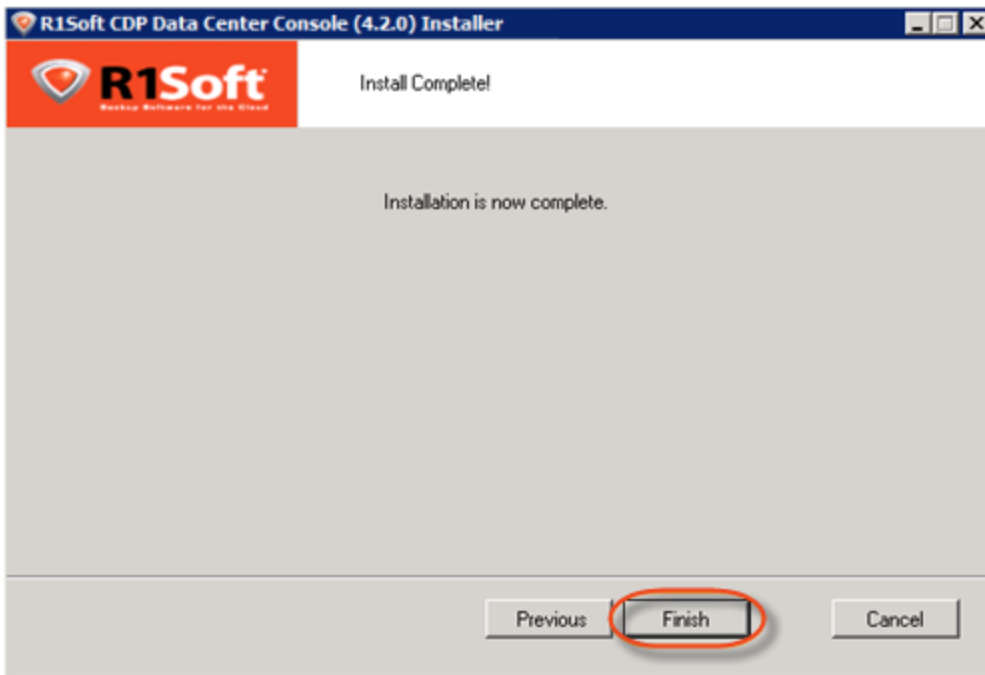
11. Verify the HTTP and HTTPS ports for the Console. It is recommended that you leave the values unchanged. Click "Next."



12. The Console is ready to be installed. Click "Next."



13. The installation process is complete. Click "Finish."



You will need to perform the following steps before you can launch the Data Center Console.

---

### Installing MySQL Java Connector

1. Download the MySQL Java Connector from the following website:

<http://www.mysql.com/downloads/connector/j/>

2. To the right of the "Connector/J 5.1.22" heading, click the download link for one of the following files:

- Windows: `mysql-connector-java-5.X.XX.zip`
- Linux: `mysql-connector-java-5.X.XX.tar.gz`



#### Note

As of September 2012, the version used in this example is labeled "`mysql-connector-java-5.1.22.zip`."

Generally Available (GA) Releases


## Connector/J 5.1.22

Select Platform:

Platform Independent

[Looking for previous GA versions?](#)

<b>Platform Independent (Architecture Independent), Compressed TAR Archive</b> (mysql-connector-java-5.1.22.tar.gz)	5.1.22	3.8M	<a href="#">Download</a>
		MD5: 89eb2502628e7ecba88ad6dbf4d36048   <a href="#">Signature</a>	
<b>Platform Independent (Architecture Independent), ZIP Archive</b> (mysql-connector-java-5.1.22.zip)	5.1.22	4.1M	<a href="#">Download</a>
		MD5: e10b7722e8431eed9d9276b7711ebe07   <a href="#">Signature</a>	

 We suggest that you use the MD5 checksums and GnuPG signatures to verify the integrity of the packages you download.

### 3. Follow the instructions for registration or log in.

Please take the time to let us know about you.

If this is the first time you have downloaded from us, you will be sent a password to enable you to log into all of the MySQL web sites, including forums and bugs.

If you already have a MySQL.com account, save time by logging in now.

<p><b>Returning Users</b></p> <p><i>Save time by logging in</i></p> <p>Email: <input type="text"/></p> <p>Password: <input type="password"/></p> <p><a href="#">Forgot your password?</a></p> <p><a href="#">Login</a></p>	<p><b>New Users</b></p> <p>Proceed with registration</p> <p><a href="#">Proceed</a></p>
--	---

Alternatively, skip registration by clicking on the link labeled "No thanks, just start my download!"

Please take the time to let us know about you.

If this is the first time you have downloaded from us, you will be sent a password to enable you to log into all of the MySQL web sites, including forums and bugs.

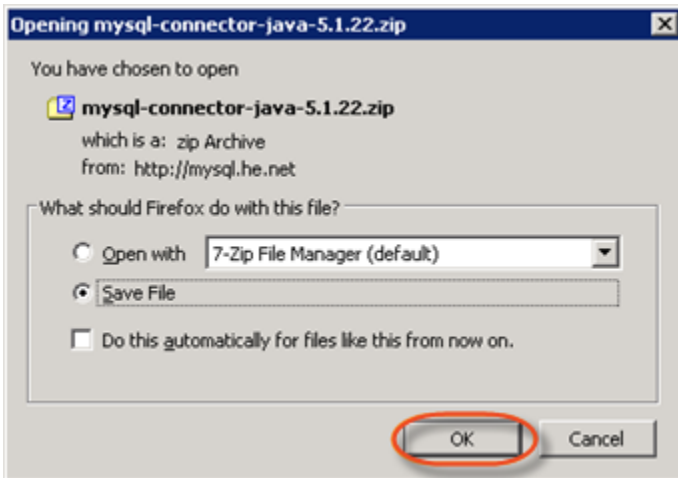
If you already have a MySQL.com account, save time by logging in now.

<p><b>Returning Users</b></p> <p><i>Save time by logging in</i></p> <p>Email: <input type="text"/></p> <p>Password: <input type="password"/></p> <p><a href="#">Forgot your password?</a></p> <p><a href="#">Login</a></p>	<p><b>New Users</b></p> <p>Proceed with registration</p> <p><a href="#">Proceed</a></p>
--	---

[No thanks, just start my download!](#)

4. You will be provided with the required mirror links. Download and save the file to a temporary

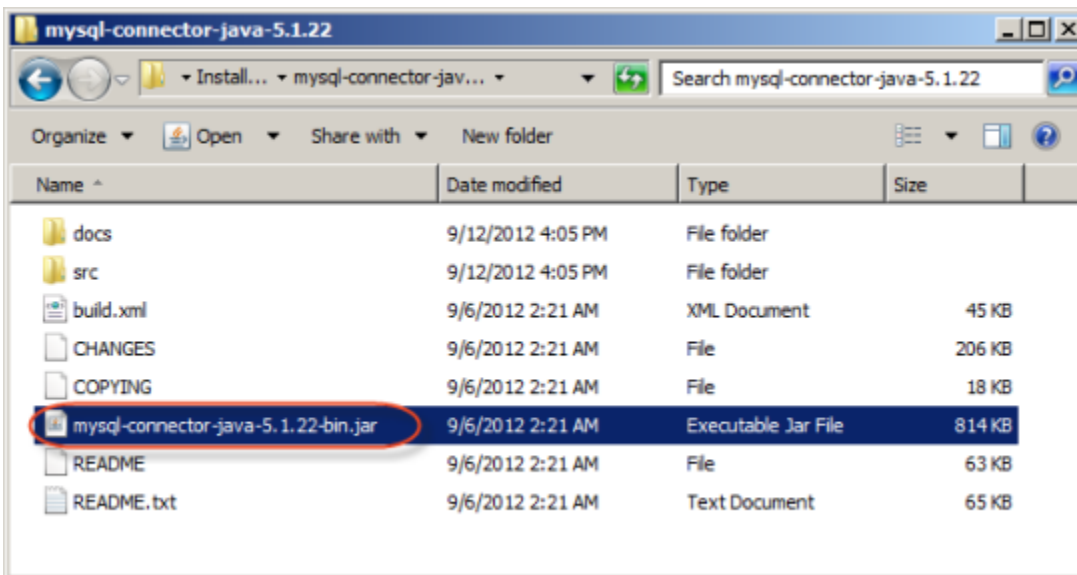
directory or known location.



5. Extract the .zip or .tar archive in the location where you downloaded the file.

6. Look in the newly created directory for a file called `mysql-connector-java-5.X.X-bin.jar`. This is the file you need.

7. The connector is a .jar file. It is contained in the archive. After you have downloaded the archive, browse through its contents, locate the `mysql-connector-java-5.1.16-bin.jar` file, and copy it to the `<DCC Installation Directory>/conf/database-drivers` directory.



## Configuring Database Properties

1. Go to `<DCC Installation Directory>/conf` and open the `server.properties` file. The contents of the file are as follows:

```

database-server=
database-port=
database-name=
database-username=
database-password=
database-poolsize=
database-test-interval=

```

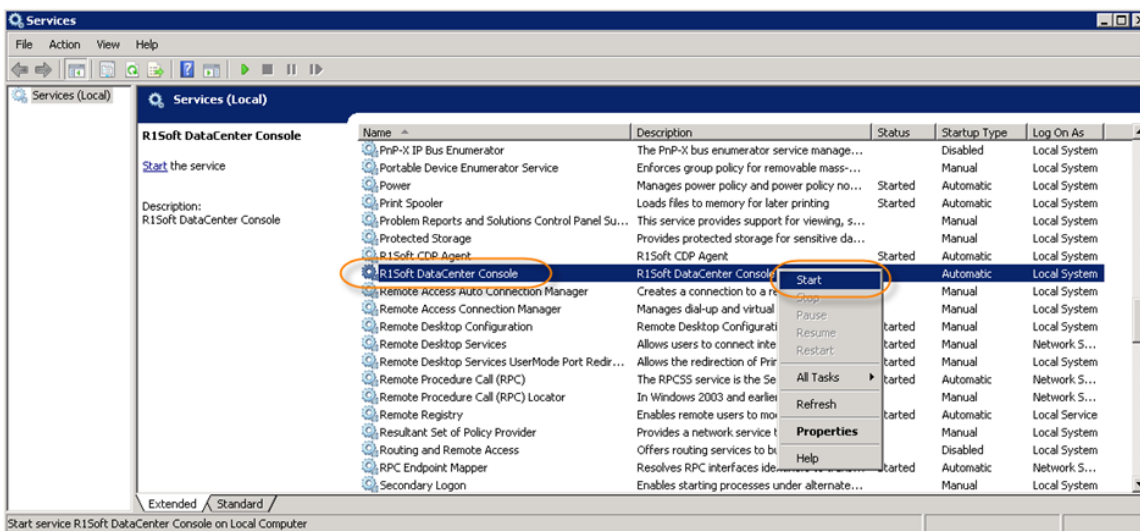
2. Provide the appropriate values for the following database-related properties:

- database-port - Set the database-port to "3306" (without quotes).
- database-server - Set the database-server to "localhost" (without quotes).
- database-username, database-password - Use your MySQL credentials for these values.
- database-name - The name of the database created during the prerequisites step.
- database-poolsize
- database-test-interval

3. Save the file.

## Starting the Data Center Console

Open the Windows Services Panel and start the "R1Soft Data Center Console" service.



## Accessing Data Center Console for the First Time

1. Open a web browser and enter the following URL:

```
http://localhost:8080
```

2. In the login form, enter the default username ("admin") and password ("admin"), and then click

"Login."

Login	
Username	<input type="text" value="user"/>
Password	<input type="password" value="****"/>
<input type="button" value="Login"/>	