

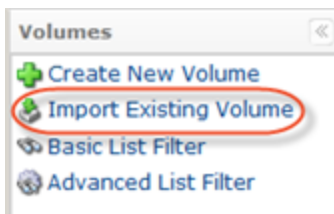
# Importing Existing Volume in Data Center Console

It is possible to import existing Volume in Data Center Console. Follow the instructions below.

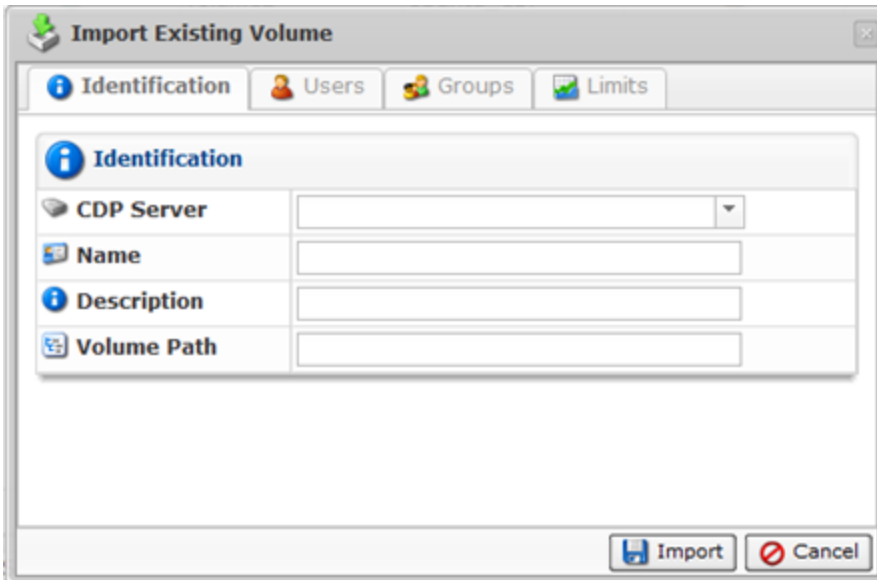
1. Select Volumes from the Main Menu.



2. In the "Volumes" menu, click the "Import Existing Volume" link.



3. The "Import Existing Volume" window opens.



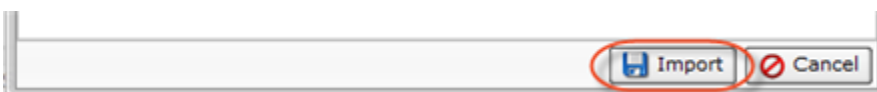
The following tabs are available:

- Identification
- Users
- Groups
- Limits

See [Creating Volumes in Data Center Console](#) for the information about every tab.

**Note**  
Make sure that you indicate the name and the path of the Volume that already exists in the chosen CDP server.

4. Once you fill in the required fields, click "Save."



5. The "Success" message appears. Click "OK."

