

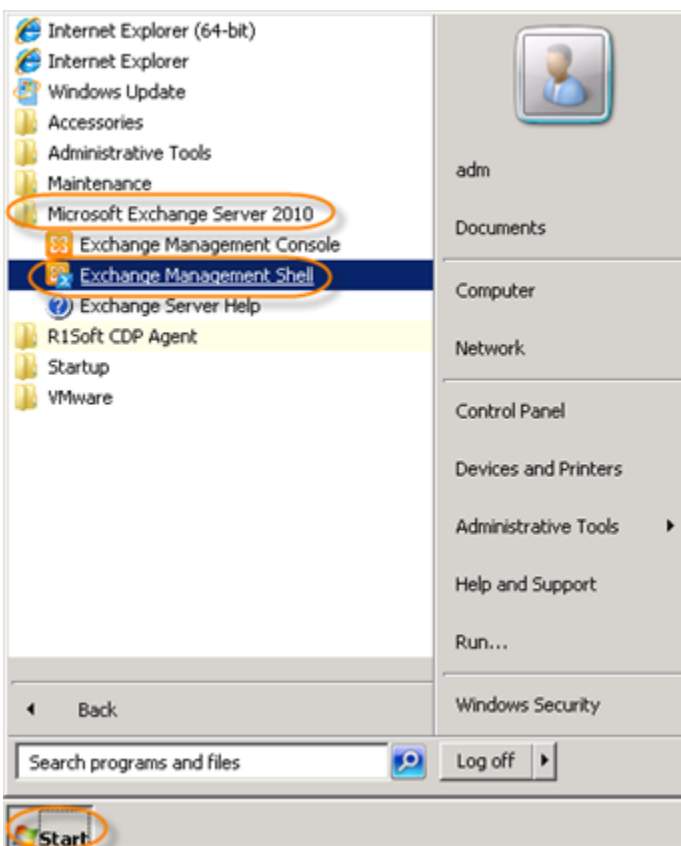
Recovering a Mailbox from MS Exchange 2010

1. Create a Recovery Database | 2. Use CDP Restore | 3. Mount the Recovery Database

1. Create a Recovery Database

To recover mailboxes, create a recovery database as described below.

1. Launch the Exchange Management Shell to restore the mailbox. Go to Start > (All) Programs > Microsoft Exchange Server 2010 Exchange Management Shell.



2. The Exchange Management Shell screen will open.

```

Welcome to the Exchange Management Shell!

Full list of cmdlets: Get-Command
Only Exchange cmdlets: Get-ExCommand
Cmdlets that match a specific string: Help *<string>*
Get general help: Help
Get help for a cmdlet: Help <cmdlet name> or <cmdlet name> -?
Show quick reference guide: QuickRef
Exchange team blog: Get-ExBlog
Show full output for a command: <command> ! Format-List

Tip of the day #74:
Exchange 2010 uses management role groups and management role assignment policies to manage permissions.
Role groups enable you to grant permissions to groups of administrators and specialist end users. These are people who manage your organization or perform special tasks, like mailbox searches for compliance reasons.
Role assignment policies enable you to grant permissions to your end users. These permissions include whether users can manage their own distribution groups, edit their own profile information, access voice mail, and more.

VERBOSE: Connecting to XCHG.thesimpsons.us
VERBOSE: Connected to XCHG.thesimpsons.us.
  
```

3. Use the `New-MailboxDatabase` command to create a mailbox database object in the database container in the Active Directory. For detailed syntax and parameter information, see [http://msdn.microsoft.com/en-us/library/aa997976\(v=EXCHG.140\).aspx](http://msdn.microsoft.com/en-us/library/aa997976(v=EXCHG.140).aspx).

In our example, we restore the `C:\test\RecoveryDB.edb` file using the following command:

```
New-MailboxDatabase -Recovery -Name RecoveryDB -Server XCHG -EdbFilePath C:\test\RecoveryDB.edb -LogFolderPath C:\test\logs
```

```
[PS] C:\Windows\system32>New-MailboxDatabase -Recovery -Name RecoveryDB -Server XCHG -EdbFilePath C:\test\RecoveryDB.edb
-LogFolderPath C:\test\logs
WARNING: Recovery database 'RecoveryDB' was created using existing file C:\test\RecoveryDB.edb. The database must be
brought into a clean shutdown state before it can be mounted.
```

Name	Server	Recovery	ReplicationType
RecoveryDB	XCHG	True	None

2. Use CDP Restore

Use CDP to restore a Microsoft Exchange 2010 Mailbox to an alternate location. See details in [Restoring a Microsoft Exchange 2010 Database to an Alternate Location](#).



Notice

Use the database created above to map against the Recovery Point Exchange database.

3. Mount the Recovery Database

Mount the database if it was not already mounted by the CDP alternate restore.

To mount "RecoveryDB," use the `Mount-Database` command. For detailed syntax and parameter information, see [http://msdn.microsoft.com/en-us/library/aa998871\(v=EXCHG.140\).aspx](http://msdn.microsoft.com/en-us/library/aa998871(v=EXCHG.140).aspx). In our example, we use the following command:

```
Mount-Database "RecoveryDB"
```

```
[PS] C:\Windows\system32>Mount-Database "RecoveryDB"
```

1. Use the `Get-MailboxStatistics` command to obtain information about a mailbox, such as the size of the mailbox, the number of messages it contains, and the last time it was accessed.

For detailed syntax and parameter information, see <http://msdn.microsoft.com/en-us/library/bb124612%28ru-ru,EXCHG.140%29.aspx>.

```
[PS] C:\Windows\system32>Get-MailboxStatistics -Database RecoveryDB
```

DisplayName	ItemCount	StorageLimitStatus	LastLogonTime
Homer J. Simpson	9	BelowLimit	2/17/2011 6:32:51 PM
SystemMailbox{d7fe3a75...	1	BelowLimit	
Marge Simpson	11	BelowLimit	2/17/2011 6:28:04 PM
Bart Simpson	11	BelowLimit	2/17/2011 6:36:54 PM
Lisa Simpson	9	BelowLimit	2/17/2011 6:39:35 PM
Microsoft Exchange	2	NoChecking	

2. Extract mailbox content from a restored database using the "Restore-Mailbox" command. The -RecoveryDatabase parameter specifies the recovery database from which you are restoring the mailbox. In the following example, we restore a "MargeSimpson" mailbox. More parameters for "Restore-Mailbox" can be found here: <http://msdn.microsoft.com/en-us/library/bb125218.aspx>

Restore-Mailbox -Identity MargeSimpson -RecoveryDatabase RecoveryDB

```
[PS] C:\Windows\system32>Restore-Mailbox -Identity MargeSimpson -RecoveryDatabase RecoveryDB
```

Confirm
Are you sure you want to perform this action?
Recovering mailbox content from mailbox 'Marge Simpson' in the recovery database 'RecoveryDB' to the mailbox for 'Marge Simpson (MargeSimpson@thesimpsons.us)'. This operation may take a long time to complete.
[Y] Yes [A] Yes to All [N] No [L] No to All [?] Help (default is "Y"):

```
RunspaceId      : 3c398258-d268-47b9-b987-9ed0d96323f0
Identity        : thesimpsons.us/Users/Marge Simpson
DistinguishedName : CN=Marge Simpson,CN=Users,DC=thesimpsons,DC=us
DisplayName     : Marge Simpson
Alias           : MargeSimpson
LegacyExchangeDN : /o=Springfield/ou=Exchange Administrative Group (FYDIBOHF23SPDLT)/cn=Recipients/cn=Marge Simpson
PrimarySmtpAddress : MargeSimpson@thesimpsons.us
SourceServer    : XCHG.thesimpsons.us
SourceDatabase  : RecoveryDB
SourceGlobalCatalog : ADC
SourceDomainController : ADC
TargetGlobalCatalog : ADC
TargetDomainController : thesimpsons.us/Users/Marge Simpson
TargetMailbox   : thesimpsons.us/Users/Marge Simpson
SourceForestCredential :
TargetForestCredential :
TargetFolder    :
PSTFilePath     :
RecoveryMailboxGuid : aa9de695-c54b-4589-82f5-645887a4c2a4
RecoveryMailboxLegacyExchangeDN : /o=SPRINGFIELD/OU=EXCHANGE ADMINISTRATIVE GROUP (FYDIBOHF23SPDLT)/CN=RECIPIENTS/CN=MARGE SIMPSON
RecoveryMailboxDisplayName : Marge Simpson
RecoveryDatabaseGuid : 859452dd-f5ec-45bd-8765-415f24d6708c
StandardMessagesDeleted : 0
AssociatedMessagesDeleted : 0
DumpsterMessagesDeleted : 0
MoveType        : Restore
MoveStage       : Completed
StartTime       : 2/18/2011 6:08:05 PM
EndTime        : 2/18/2011 6:08:07 PM
StatusCode      : 0
StatusMessage   : This mailbox in the recovery database has been restored to the target user mailbox.
ReportFile      : C:\Program Files\Microsoft\Exchange Server\U14\Logging\MigrationLogs\restore-Mailbox 20110218-180800-8313482.xml
ServerName      : XCHG.thesimpsons.us
```