

## Upgrading Data Center Console for Windows



### Notice

Data Center Console must be upgraded first.

You can receive email notifications about new version releases of R1Soft software. New versions are improved by bug fixes and new/reworked functionality. All enhancements made to the product are documented in the [Release Notes](#), where you can find a brief summary of recent changes, enhancements, and bug fixes in a particular software release.

It is assumed that you have a [Windows Server 2008 R2](#) running Data Center Console 4.2.0 or an earlier version.



### Note

R1Soft products follow this format for version numbers: MAJOR.MINOR.MAINTENANCE. Pre-release downloads ALWAYS have a version number that has an ODD MINOR number, e.g., 3.6.0. Stable downloads ALWAYS have a version number with an EVEN MINOR number, e.g., 3.18.1.



### Notice

To upgrade the CDP Server, you do not need to uninstall the previous version. It is safe to upgrade Data Center Console on an active, running server. After the upgrade is complete, a reboot is not required. All your licenses, settings, added CDP Servers, etc., will remain unchanged.

Follow the instructions below to upgrade the Data Center Console.

1. Find your current Data Center Console version before upgrading. To do this, log in to the program, and click "Configuration" in the main menu.



2. At the top of the page, you will see the current version of your Data Center Console.

Continuous Data Protection® - Data Center Console admin Logout Help

Configuration <

- Server Information
- Console Options
- Web Server Options
- API Server Options

Dashboard

CDP Servers

Disk Usage

Volumes

Agents

Groups

Users

Disk Safes

Policies

Reporting

Configuration

### Server Information

Version	4.2.0 build 17723
Build Date	Aug 8, 2012 4:52:35 PM

### System Details

DCC Start Time	Aug 22, 2012 06:43:56 AM	
DCC Uptime	00 days, 2:34:32	
Last Transaction ID	4	
OS Name	Windows Server 2008 R2	
OS Architecture	amd64	
OS Version	6.1	
Max Configured Heap Memory	912 MB	
Processors Detected	2	
Free Physical Memory	983.3 MB	
Total Physical Memory	3.9 GB	
Heap	Initial	128 MB
	Maximum	912 MB
	Committed	128 MB
	Used	96.3 MB
Non-Heap	Initial	26 MB
	Maximum	304 MB
	Committed	86.1 MB
	Used	85.2 MB

### System Logging

Logging Level: INFO

### Download Data for Tech Support

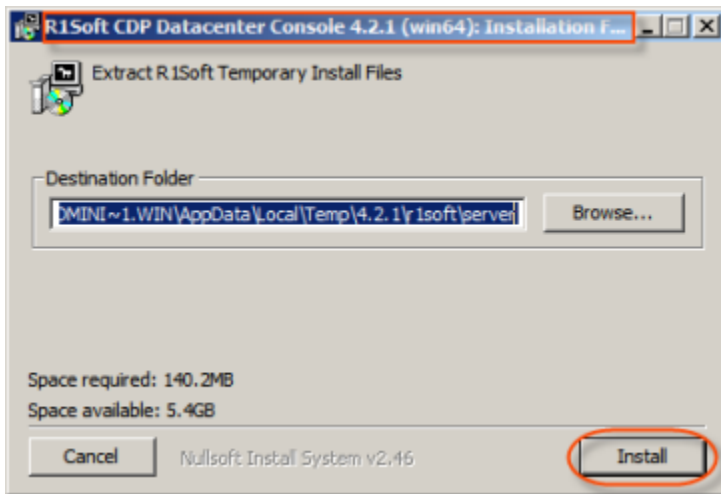
Log Files

3. Then see [Obtaining Data Center Console for Windows](#) for instructions on finding out if there is a new version available for downloading.

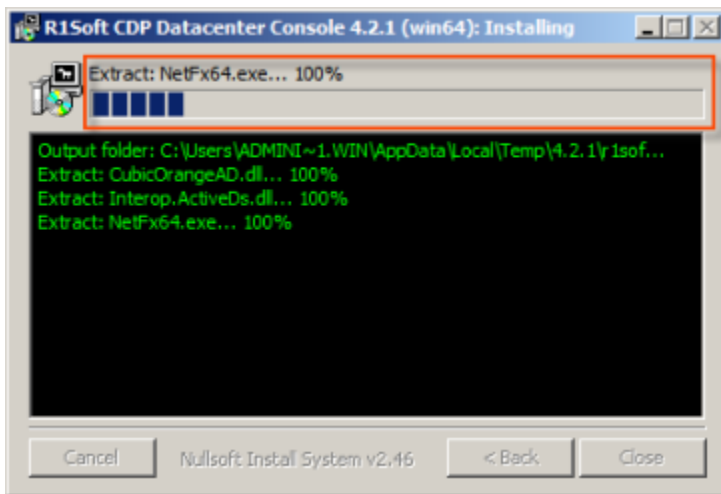
4. Once you have downloaded the new version, double-click it to start the installation process. The installation wizard will open.

**Note**  
The upgrade process is the same as the installation process.

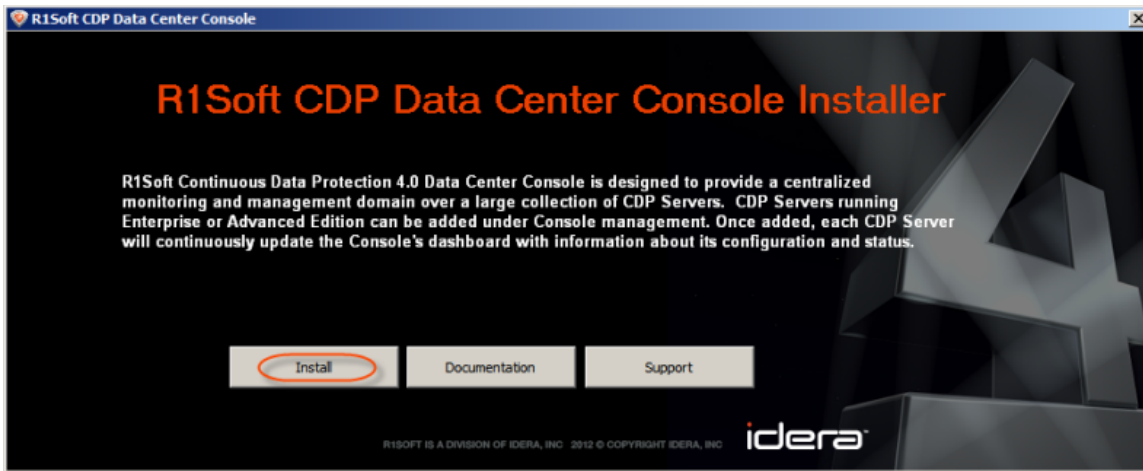
Click the "Next" button.



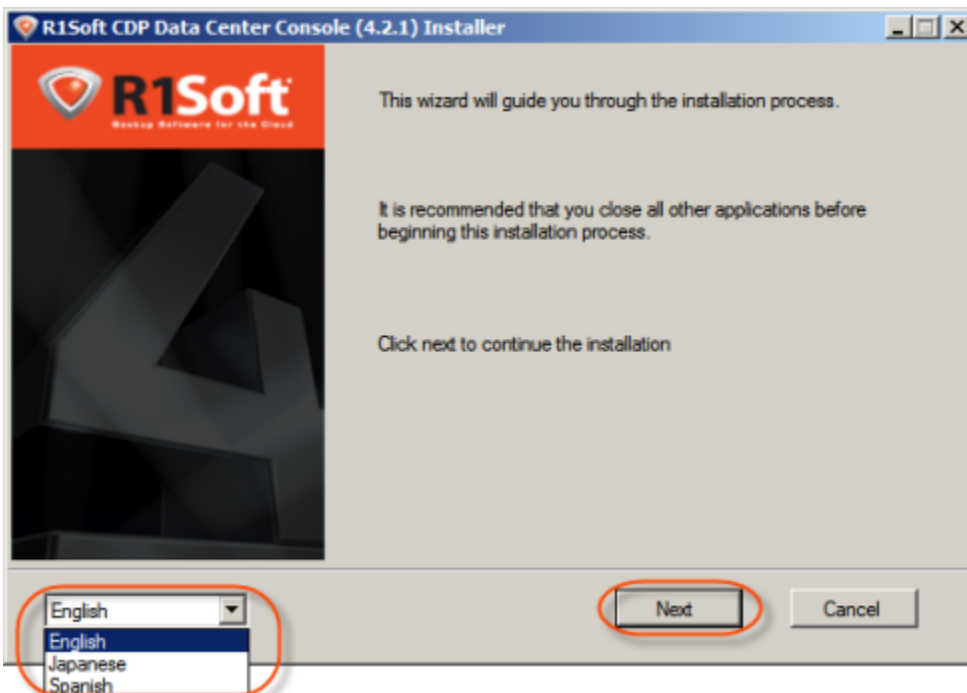
5. File extraction will start.



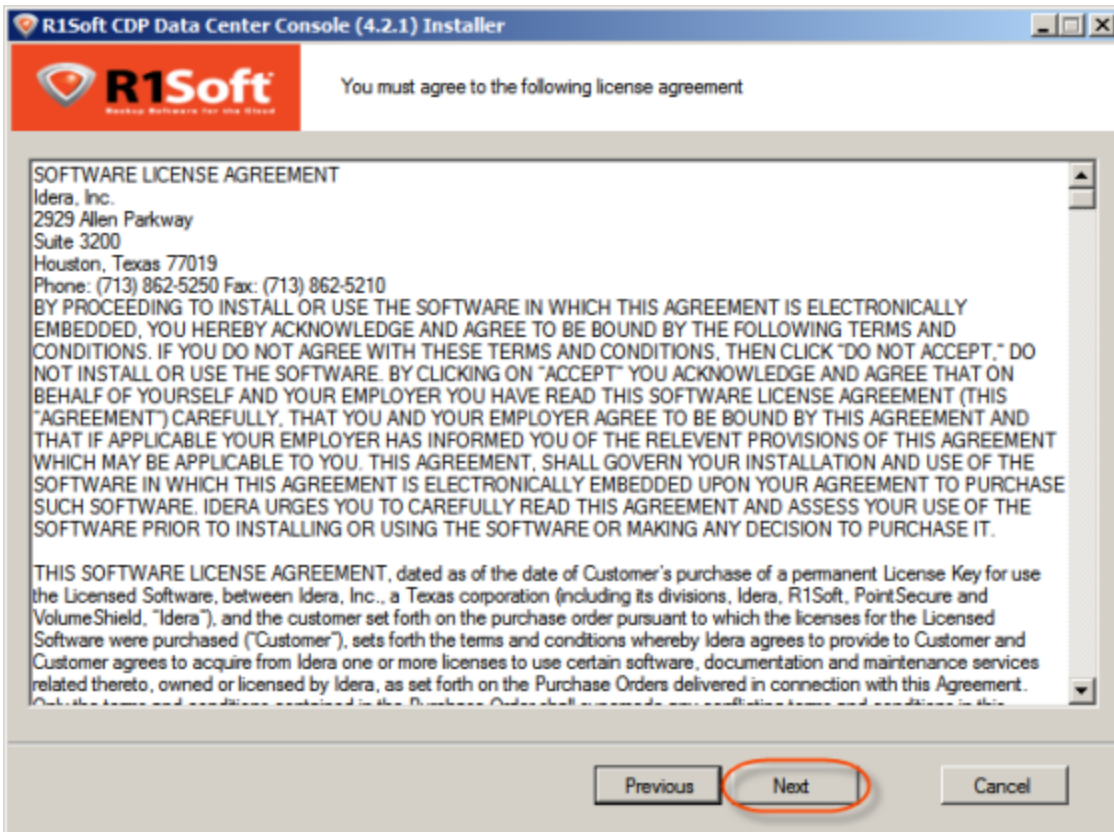
6. Click the "Install" button in the introductory window.



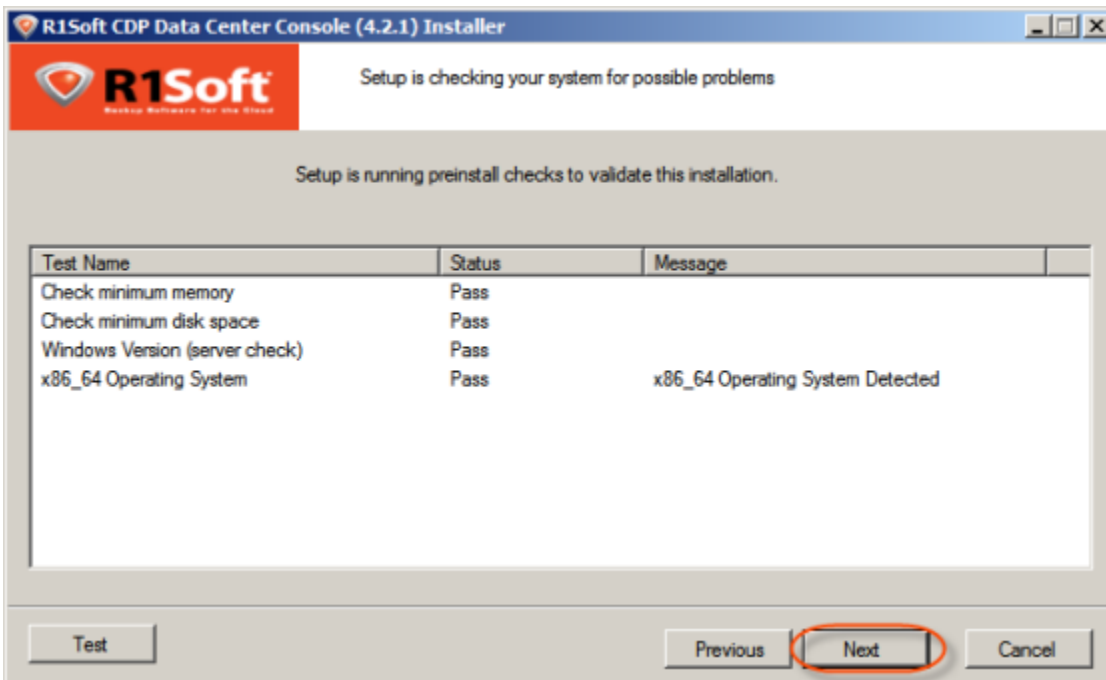
7. Choose a preferred language, and click the "Next" button.



8. Read the agreement, and click the "Next" button.

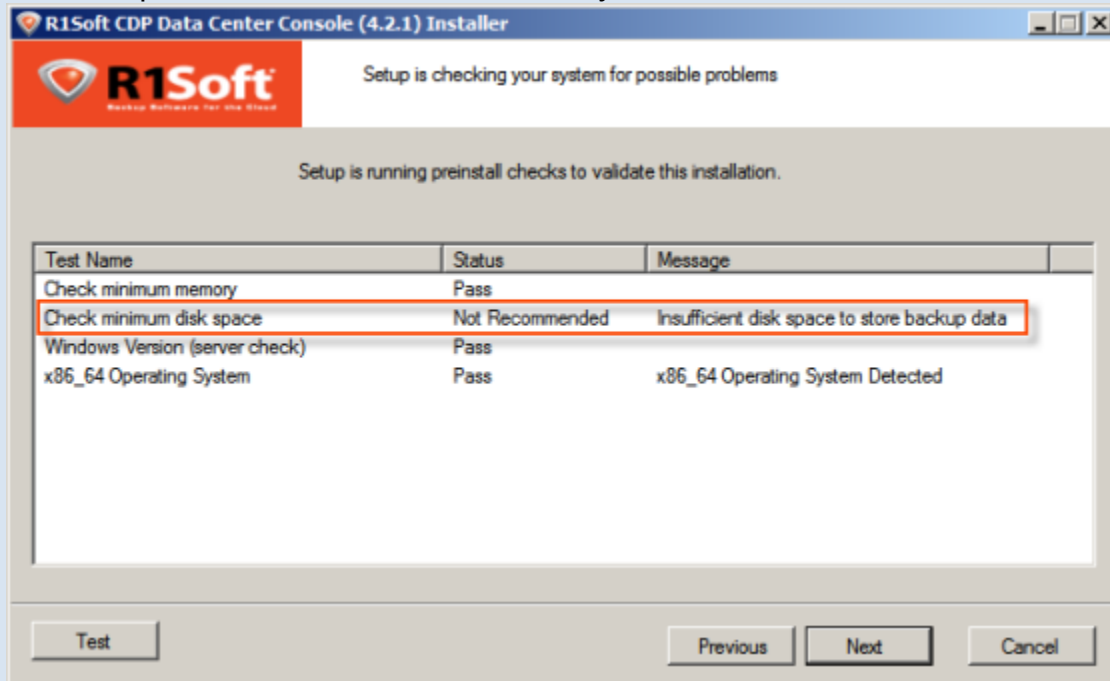


9. Setup will check for any problems. If no problems are found, click the "Next" button.

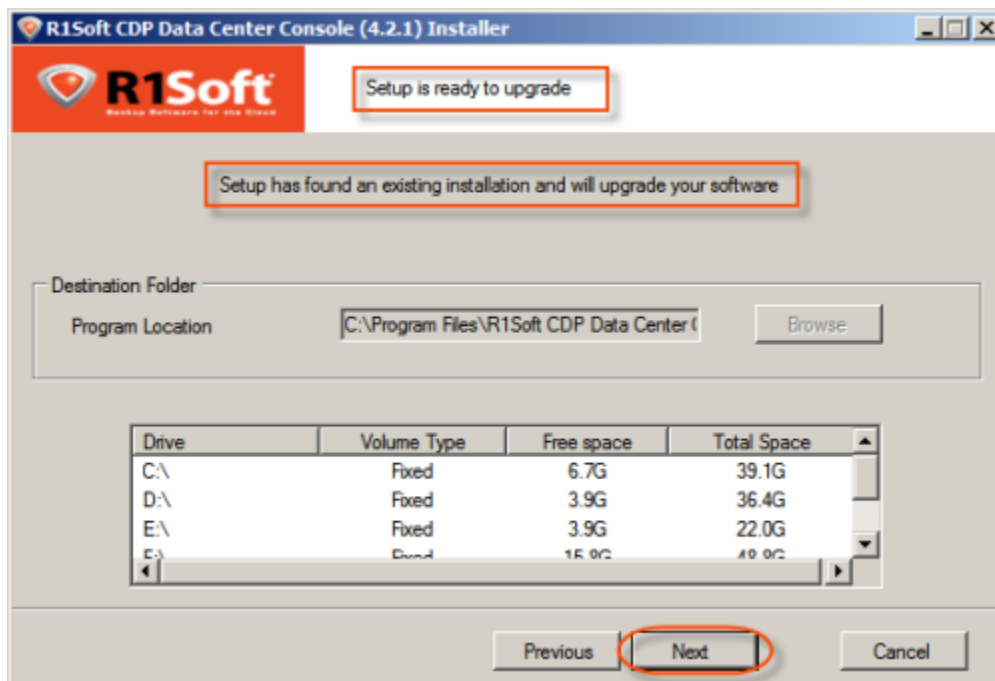


**Note**

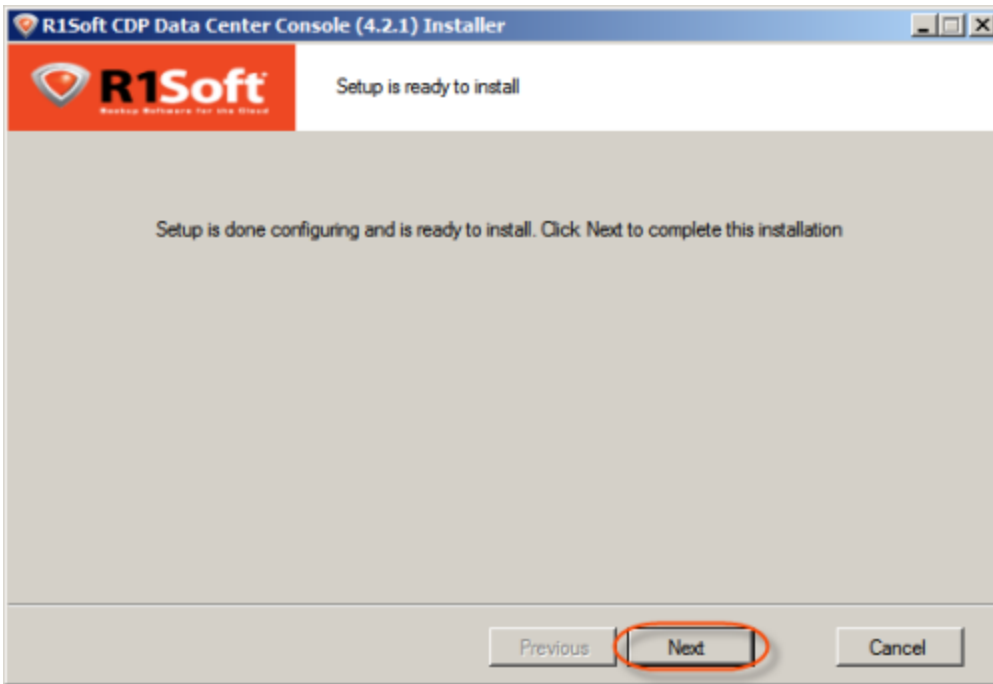
There may be some problems with the installation. Eliminate them and continue. In our example, this issue is not critical, and you can continue.



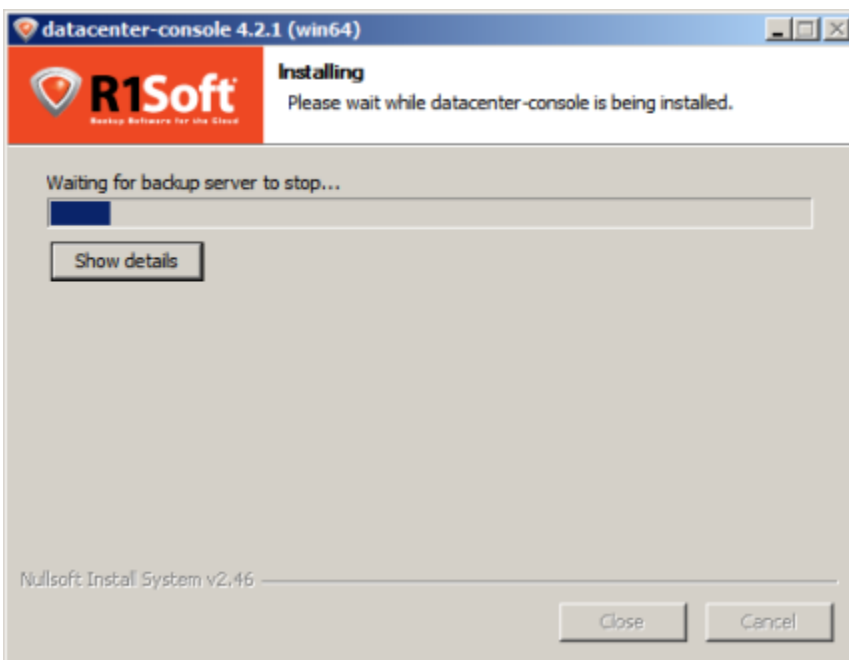
10. Since we are upgrading, you may see the "Setup is ready to upgrade" message. Click "Next."



11. Click "Next" to install the new version.

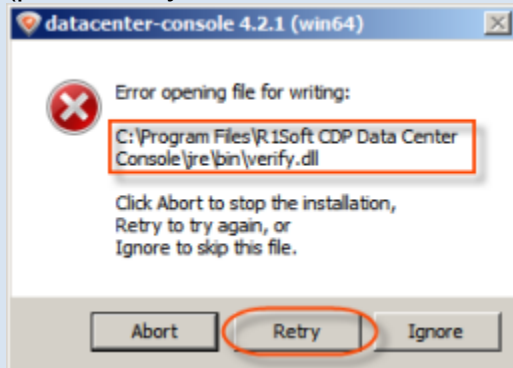


12. The installation progress bar is shown.

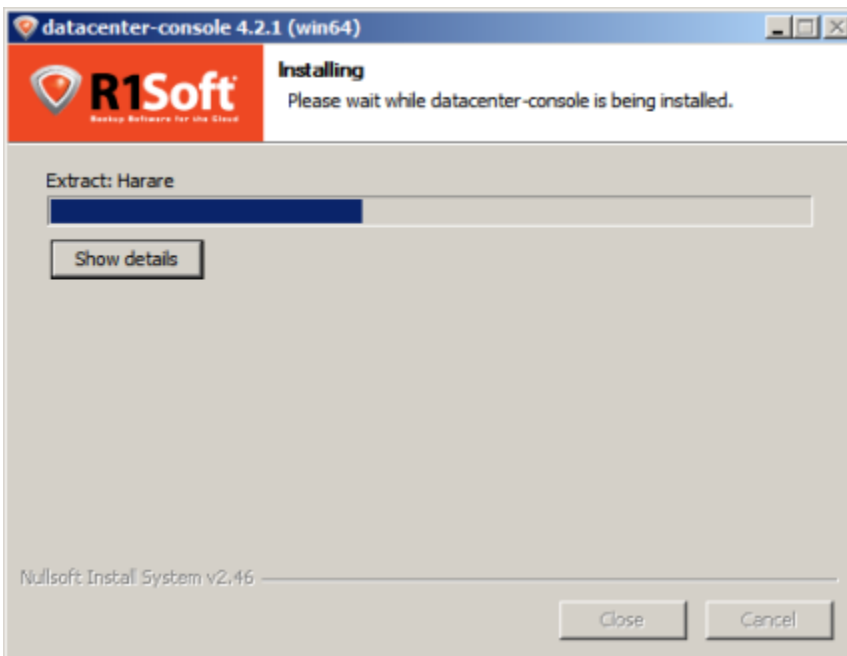


**Note**

If you encounter such a message(s), find the file(s) indicated and rename them (provide any other file name for them). Then click the "Retry" button.



13. The installation process will continue.



14. Installation is now complete. Click the "Finish" button.



15. Now you can check if the Data Center Console's version has been changed.

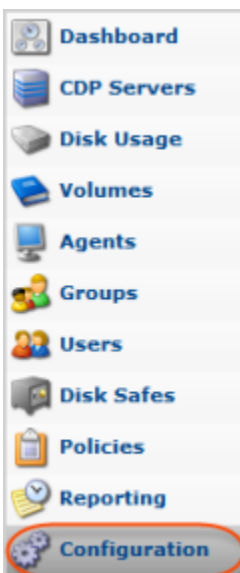


#### Note

Be aware that you do not have to start the "R1Soft DataCenter Console" service, as it starts automatically after the installation completes.

16. Open a browser, and enter the Data Center Console's address as you did earlier.

17. Click "Configuration" in the main menu.



18. In our example, we can see that the version has been changed as expected.

Continuous Data Protection® - Data Center Console admin Logout Help

Configuration

- Server Information
- Console Options
- Web Server Options
- API Server Options

Dashboard

- CDP Servers
- Disk Usage
- Volumes
- Agents
- Groups
- Users
- Disk Safes
- Policies
- Reporting
- Configuration

### Server Information

Version	4.2.1 build 17780
Build Date	Aug 20, 2012 4:20:21 PM

### System Details

DCC Start Time	Aug 22, 2012 10:16:05 AM	
DCC Uptime	00 days, 0:26:08	
Last Transaction ID	4	
OS Name	Windows Server 2008 R2	
OS Architecture	amd64	
OS Version	6.1	
Max Configured Heap Memory	912 MB	
Processors Detected	2	
Free Physical Memory	652.6 MB	
Total Physical Memory	3.9 GB	
Heap	Initial	128 MB
	Maximum	912 MB
	Committed	368.1 MB
	Used	216 MB
Non-Heap	Initial	26 MB
	Maximum	304 MB
	Committed	74.3 MB
	Used	73.5 MB