


Removing Devices

Removing a **Device** will delete all data associated with that Device from the Disk Safe.

 **Notice**
You cannot undo Removing Device once performed.


Follow the instructions below to remove Devices assigned to a Disk Safe in the CDP Interface.

1. Click on "Disk Safes" in the Main Menu to access the "Disk Safes" page.

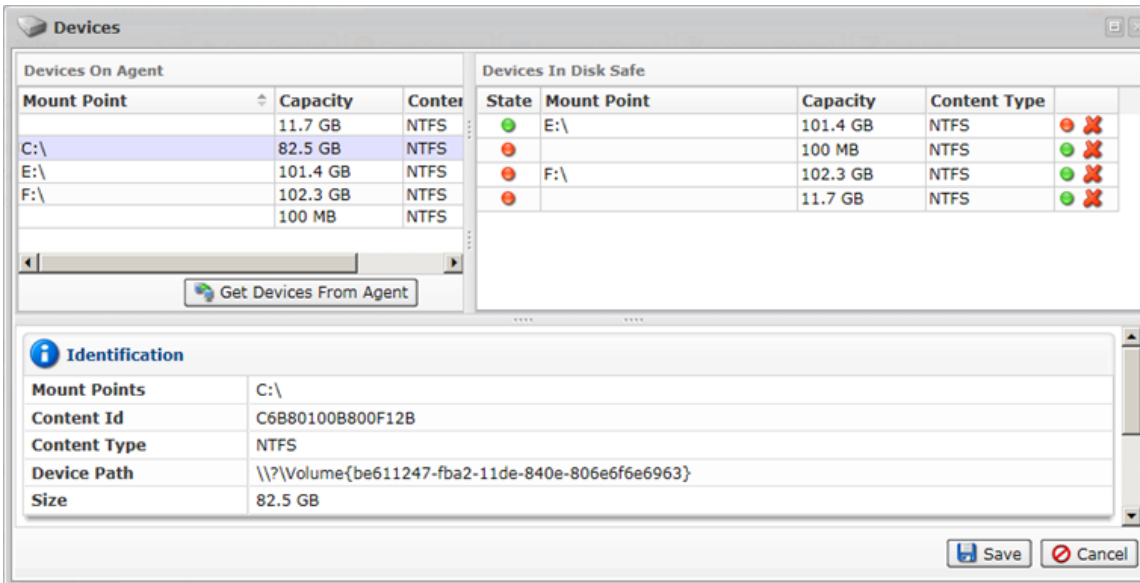


2. In the "Disk Safes" list, find a Disk Safe and click on the "Manage Devices" icon in the "Actions" column for this Disk Safe.

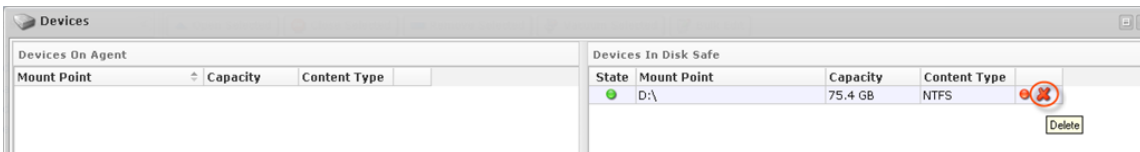
<input type="checkbox"/>	State	Name	Agent Name	Volume Name				All Devices	QuickLZ	
<input type="checkbox"/>		plesk	plesk	Volume0	1432	3	2.7 GB		QuickLZ	
<input type="checkbox"/>		virtuozzo	virtuozzo	Volume0	338	3	8.1 GB		QuickLZ	
<input type="checkbox"/>		DS - 192		QA	1	4	2.8 GB		QuickLZ	
<input type="checkbox"/>		10.230.100.234	10.230.100.234		3	4	2.6 GB		QuickLZ	
<input type="checkbox"/>		Office	virtuozzo	Volume0	46	2	7.3 GB		QuickLZ	
<input type="checkbox"/>		t3st	10.230.100.234	Volume0	0	0	3.5 MB		QuickLZ	

 **Tip**
To find a Disk Safe, you can use the Basic and Advanced List Filters. See [Customizing the Disk Safes List](#).

3. The "Devices" window will open.



4. In the "Devices In Disk Safe" pane, click on the "Delete" icon in front of the Device you want to remove.



5. Confirm your request to remove the Device from the Disk Safe by clicking on "Remove" in the displayed confirmation window.

