

Restoring Files

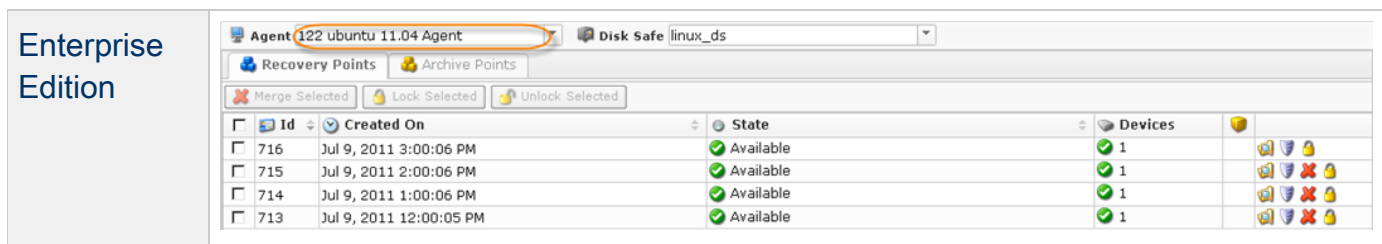
You can restore whole Device(s) or selected files and folders from any [Recovery Point](#). You can extract files from a Recovery Point to an off-site server or local hard disk.

To restore data in CDP, follow the instructions below.

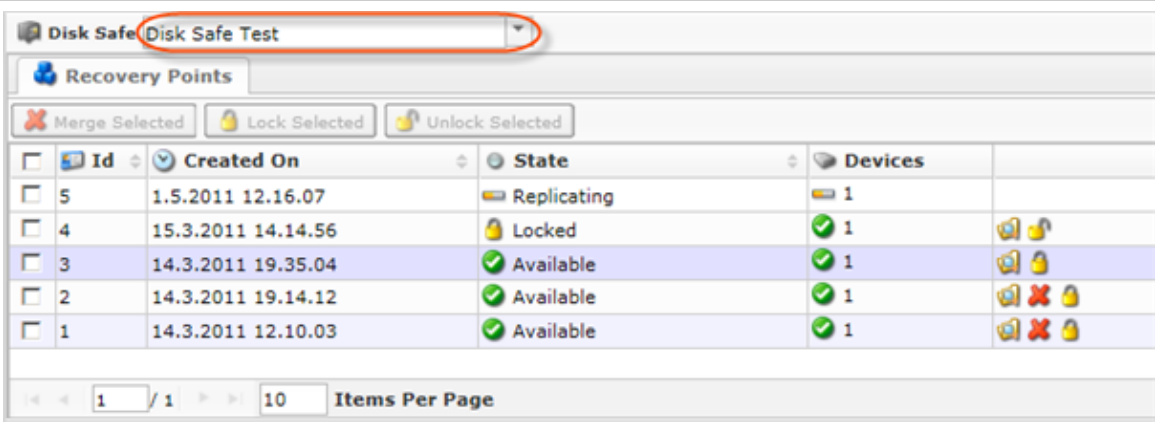
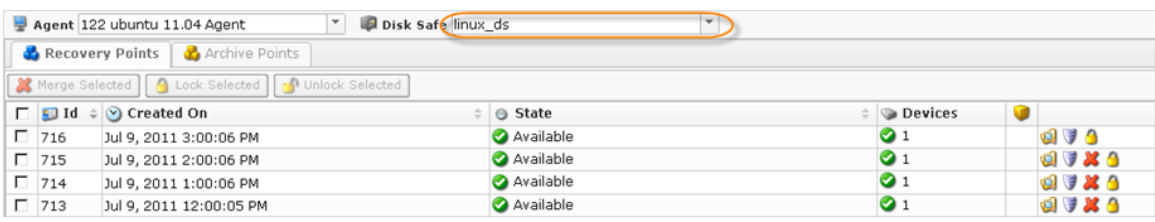
1. Click on "Recovery Points" in the Main Menu to open the "Recovery Points" window.



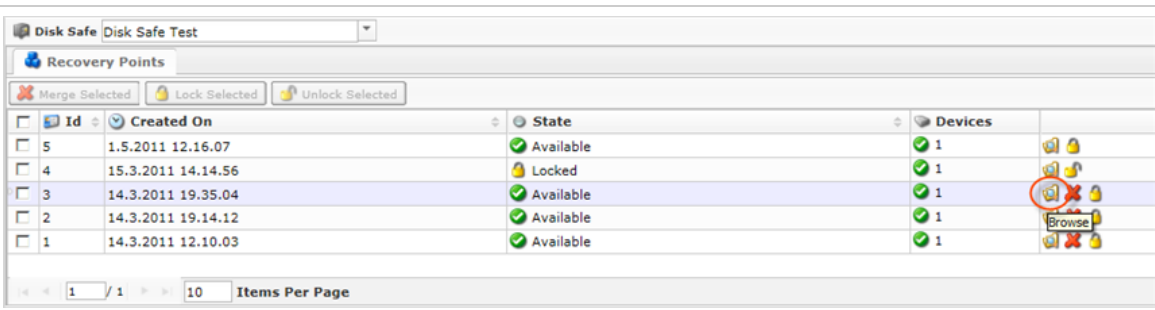
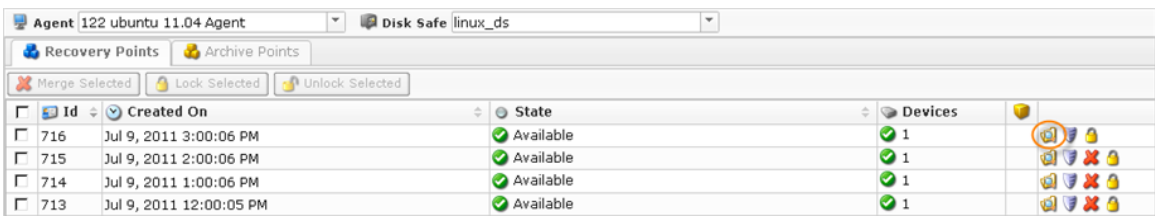
2. **Enterprise Edition:** In the "Recovery Points" list, select an Agent from the drop-down menu located on the "Recovery Points" list toolbar.



3. Select a Disk Safe from the drop-down menu located on the "Recovery Points" list toolbar.

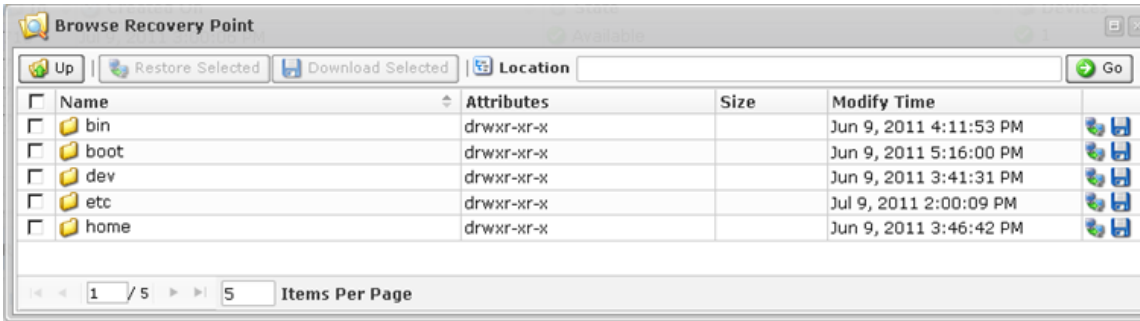
Standard Edition																								
	<table border="1"> <thead> <tr> <th>Id</th> <th>Created On</th> <th>State</th> <th>Devices</th> </tr> </thead> <tbody> <tr> <td>5</td> <td>1.5.2011 12.16.07</td> <td>Replicating</td> <td>1</td> </tr> <tr> <td>4</td> <td>15.3.2011 14.14.56</td> <td>Locked</td> <td>1</td> </tr> <tr> <td>3</td> <td>14.3.2011 19.35.04</td> <td>Available</td> <td>1</td> </tr> <tr> <td>2</td> <td>14.3.2011 19.14.12</td> <td>Available</td> <td>1</td> </tr> <tr> <td>1</td> <td>14.3.2011 12.10.03</td> <td>Available</td> <td>1</td> </tr> </tbody> </table>	Id	Created On	State	Devices	5	1.5.2011 12.16.07	Replicating	1	4	15.3.2011 14.14.56	Locked	1	3	14.3.2011 19.35.04	Available	1	2	14.3.2011 19.14.12	Available	1	1	14.3.2011 12.10.03	Available
Id	Created On	State	Devices																					
5	1.5.2011 12.16.07	Replicating	1																					
4	15.3.2011 14.14.56	Locked	1																					
3	14.3.2011 19.35.04	Available	1																					
2	14.3.2011 19.14.12	Available	1																					
1	14.3.2011 12.10.03	Available	1																					
Advanced, Enterprise Edition																								
	<table border="1"> <thead> <tr> <th>Id</th> <th>Created On</th> <th>State</th> <th>Devices</th> </tr> </thead> <tbody> <tr> <td>716</td> <td>Jul 9, 2011 3:00:06 PM</td> <td>Available</td> <td>1</td> </tr> <tr> <td>715</td> <td>Jul 9, 2011 2:00:06 PM</td> <td>Available</td> <td>1</td> </tr> <tr> <td>714</td> <td>Jul 9, 2011 1:00:06 PM</td> <td>Available</td> <td>1</td> </tr> <tr> <td>713</td> <td>Jul 9, 2011 12:00:05 PM</td> <td>Available</td> <td>1</td> </tr> </tbody> </table>	Id	Created On	State	Devices	716	Jul 9, 2011 3:00:06 PM	Available	1	715	Jul 9, 2011 2:00:06 PM	Available	1	714	Jul 9, 2011 1:00:06 PM	Available	1	713	Jul 9, 2011 12:00:05 PM	Available	1			
Id	Created On	State	Devices																					
716	Jul 9, 2011 3:00:06 PM	Available	1																					
715	Jul 9, 2011 2:00:06 PM	Available	1																					
714	Jul 9, 2011 1:00:06 PM	Available	1																					
713	Jul 9, 2011 12:00:05 PM	Available	1																					

4. Find a Recovery Point and click on the "Browse" icon in the "Actions" column for this Recovery Point.

Standard Edition																								
	<table border="1"> <thead> <tr> <th>Id</th> <th>Created On</th> <th>State</th> <th>Devices</th> </tr> </thead> <tbody> <tr> <td>5</td> <td>1.5.2011 12.16.07</td> <td>Available</td> <td>1</td> </tr> <tr> <td>4</td> <td>15.3.2011 14.14.56</td> <td>Locked</td> <td>1</td> </tr> <tr> <td>3</td> <td>14.3.2011 19.35.04</td> <td>Available</td> <td>1</td> </tr> <tr> <td>2</td> <td>14.3.2011 19.14.12</td> <td>Available</td> <td>1</td> </tr> <tr> <td>1</td> <td>14.3.2011 12.10.03</td> <td>Available</td> <td>1</td> </tr> </tbody> </table>	Id	Created On	State	Devices	5	1.5.2011 12.16.07	Available	1	4	15.3.2011 14.14.56	Locked	1	3	14.3.2011 19.35.04	Available	1	2	14.3.2011 19.14.12	Available	1	1	14.3.2011 12.10.03	Available
Id	Created On	State	Devices																					
5	1.5.2011 12.16.07	Available	1																					
4	15.3.2011 14.14.56	Locked	1																					
3	14.3.2011 19.35.04	Available	1																					
2	14.3.2011 19.14.12	Available	1																					
1	14.3.2011 12.10.03	Available	1																					
Advanced, Enterprise Edition																								
	<table border="1"> <thead> <tr> <th>Id</th> <th>Created On</th> <th>State</th> <th>Devices</th> </tr> </thead> <tbody> <tr> <td>716</td> <td>Jul 9, 2011 3:00:06 PM</td> <td>Available</td> <td>1</td> </tr> <tr> <td>715</td> <td>Jul 9, 2011 2:00:06 PM</td> <td>Available</td> <td>1</td> </tr> <tr> <td>714</td> <td>Jul 9, 2011 1:00:06 PM</td> <td>Available</td> <td>1</td> </tr> <tr> <td>713</td> <td>Jul 9, 2011 12:00:05 PM</td> <td>Available</td> <td>1</td> </tr> </tbody> </table>	Id	Created On	State	Devices	716	Jul 9, 2011 3:00:06 PM	Available	1	715	Jul 9, 2011 2:00:06 PM	Available	1	714	Jul 9, 2011 1:00:06 PM	Available	1	713	Jul 9, 2011 12:00:05 PM	Available	1			
Id	Created On	State	Devices																					
716	Jul 9, 2011 3:00:06 PM	Available	1																					
715	Jul 9, 2011 2:00:06 PM	Available	1																					
714	Jul 9, 2011 1:00:06 PM	Available	1																					
713	Jul 9, 2011 12:00:05 PM	Available	1																					

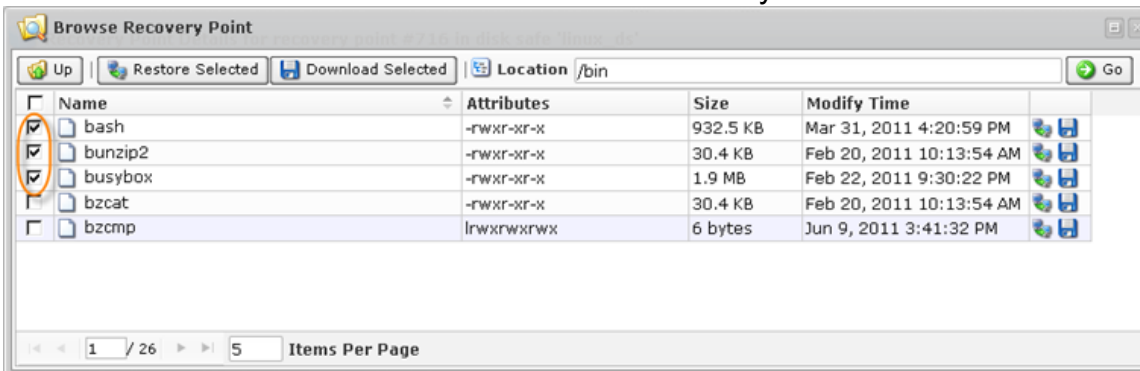
Tip
To find a Recovery Point, you can use the Basic and Advanced List Filters. See [Customizing the Recovery Points List](#).

5. The "Browse Recovery Point" window opens.

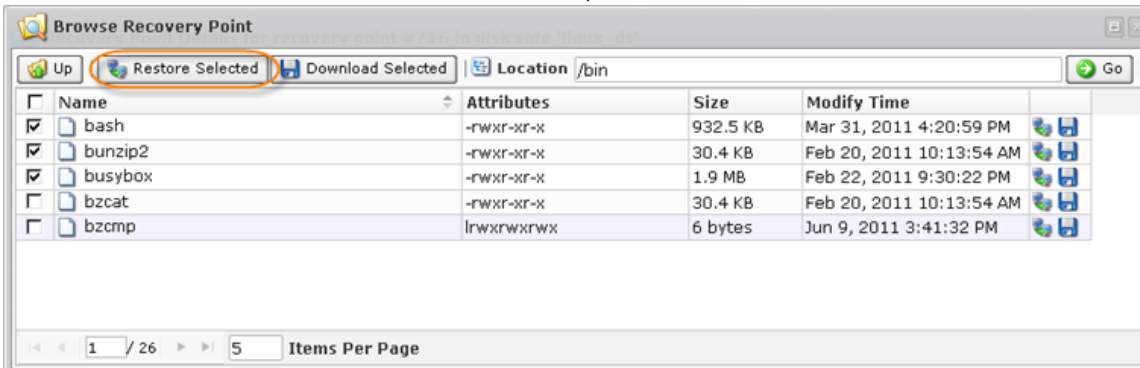


See also: [Browsing Recovery Points](#).

6. Select the checkboxes next to the files and folders you want to restore.



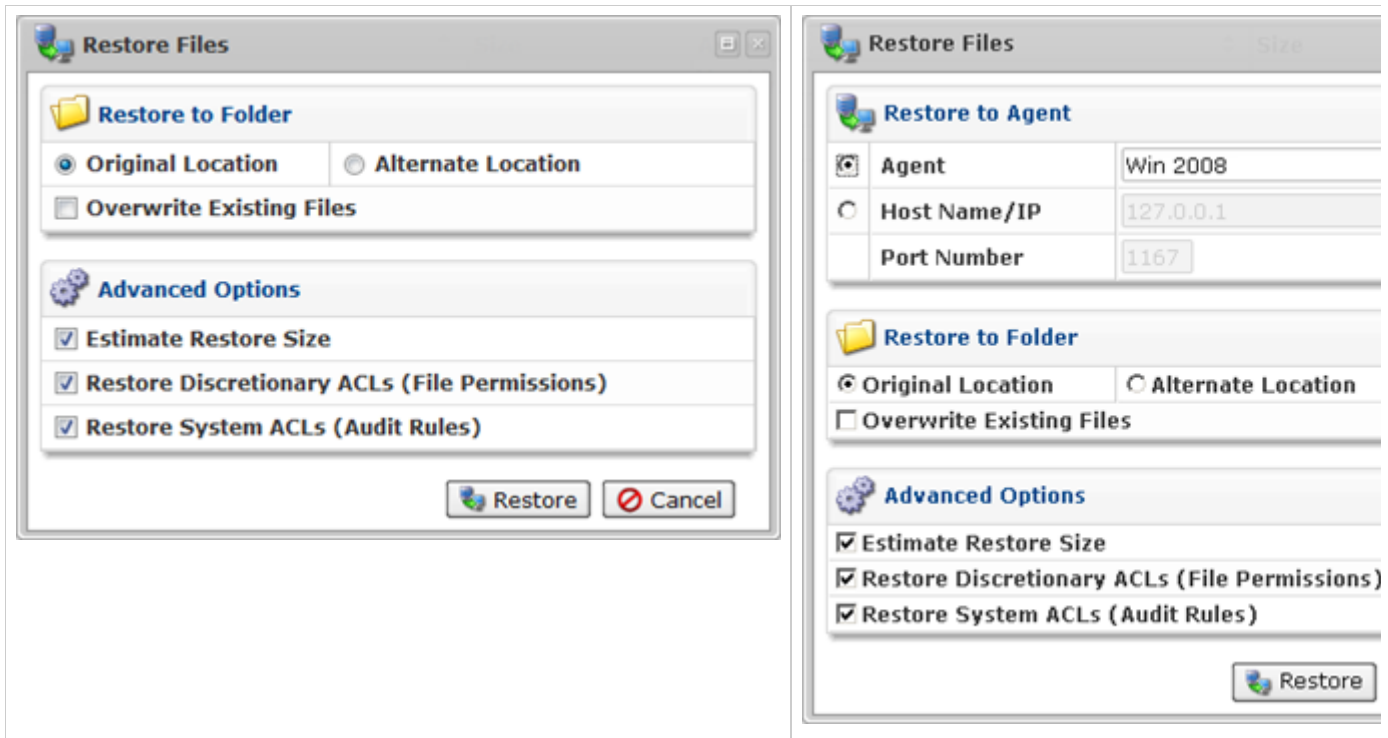
7. Once the files and folders are selected, click on "Restore Selected."



8. The "Restore Files" window will open.

Standard Edition

Enterprise Edition



9. Specify the following options:

Restore to Agent (Enterprise Edition)

- **Agent** - Select this option to restore to an Agent already added to the system. Connects to the Agent name and uses the port configured.
- **Host Name/IP** - Connect to the specified host name and port. This option allows you to Restore to a Host with a Host Name/IP address different than the original Host.
- **Port Number** - Used together with the Host Name/IP.

Restore to Folder

- **Original Location** - Restores to the same directories when the Recovery Point was created.
- **Alternate Location** - Specify a path on the Host to Restore the files to. The complete path and directory structure of all selected files will be created under the path specified here. If the specified path does not exist, it will be created.
- **Overwrite Existing Files** - When enabled, any existing files or directories with the same name will be overwritten, even if they are newer.

Advanced Options

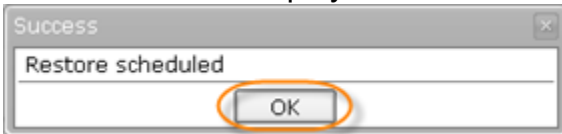
- **Estimate Restore Size** - Enabled by default. When enabled you can see the additional "Estimated Restore Size" and "Estimated Object Count" values in the "Reporting" page - "Summary" tab - "Restore Status" area.
- **Restore Discretionary ACLs (File Permissions)**
- **Restore System ACLs (Audit Rules)**

10. Click on "Restore."



11. A notification window will inform you that the Restore task has been scheduled. It means the Task has started. The "Reporting" screen displays the progress of the Task.

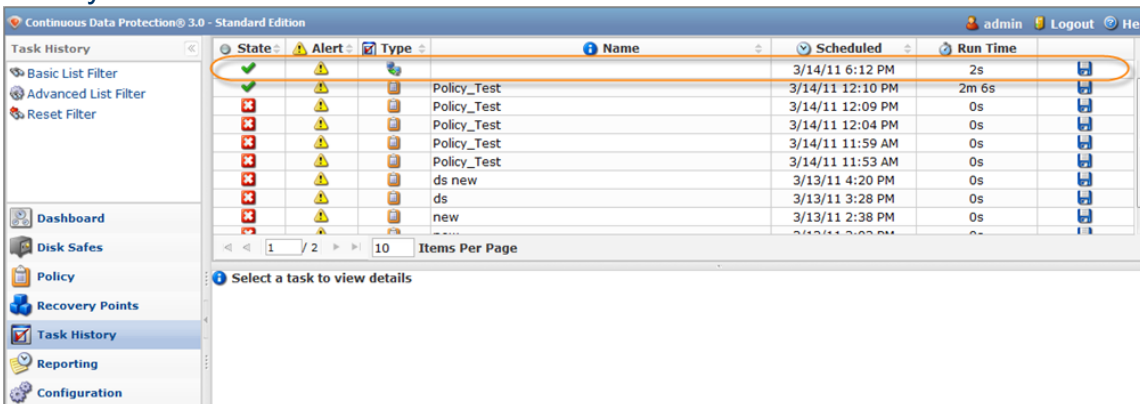
Click "OK" in the displayed window.



Tip

The Task results can be sent via Email as a Report. See [Reporting](#).

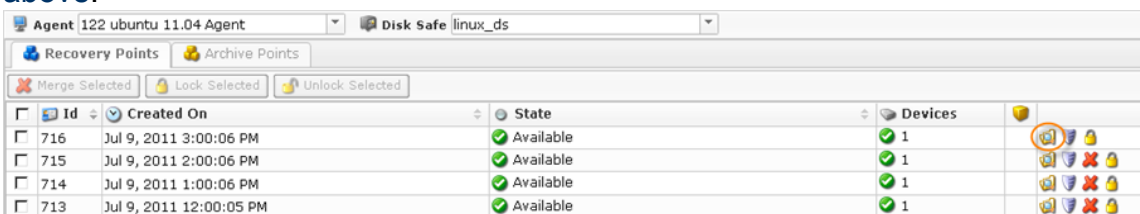
12. To view the Restore Task details, access the "Reporting" window. See [Accessing Task History](#).



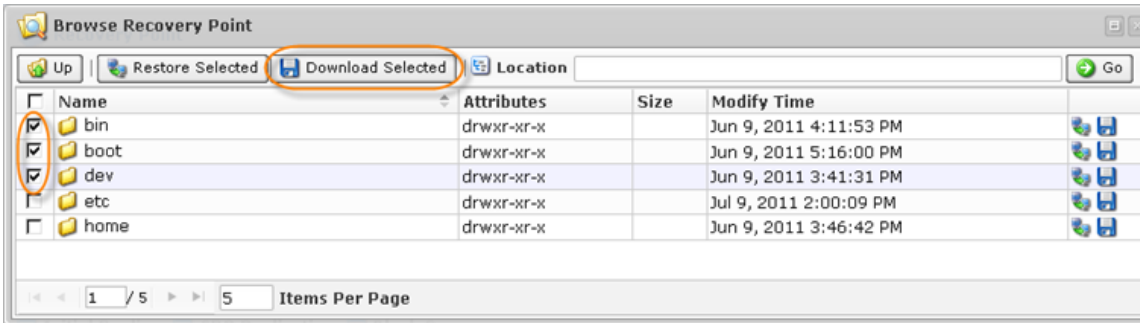
Downloading Files as an Archive

In CDP you can download the files stored in Recovery Points as a [tar](#) or a [zip](#) archive. Follow the instructions below.

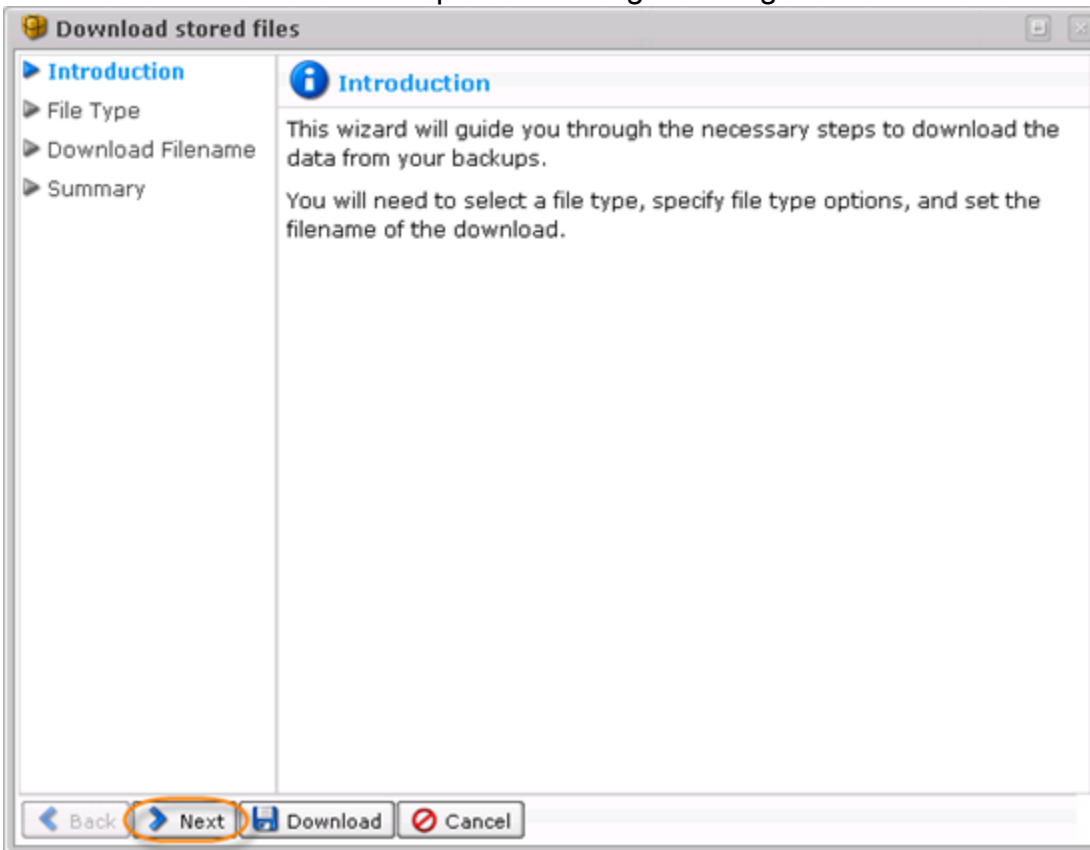
1. Select the Recovery Point you want to save files from and click "Browse." See the instructions [above](#).



2. Check the boxes next to the files or folders you want to download and click "Download Selected."

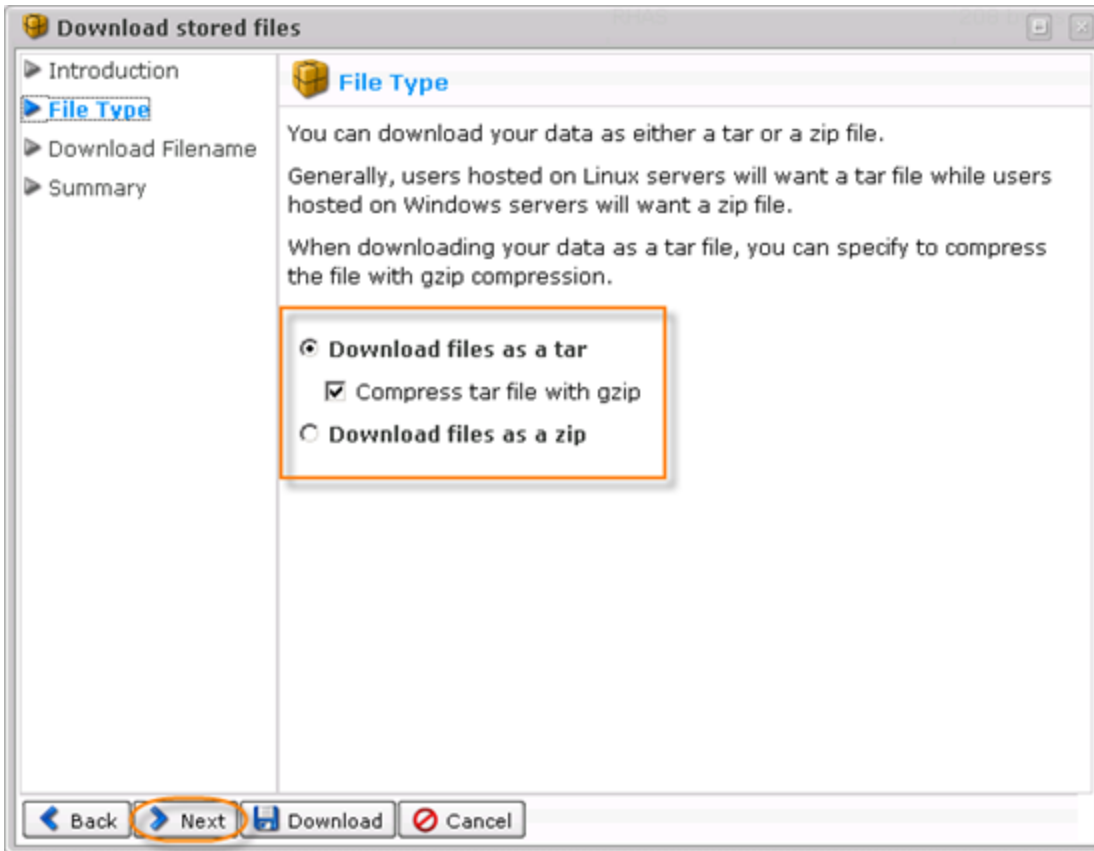


3. The "Download Stored Files" wizard will appear. Familiarize yourself with the introductory information and click "Next" to proceed with generating the archive for downloading.



4. On the "File Type" screen, select the type of the archive file. The following options are available:

- Download files as a tar - Allows you to download data as a [tar](#) file. This would be more preferable for Linux users.
 - Compress tar file with gzip - Check this box to compress the [tar](#) file with gzip compression.
- Download files as a zip - Allows you to download data as a [zip](#) file. This would be more preferable for Windows users.



Click "Next."

5. On the next "Download Filename" screen, define the name of the archive. The following options are available:

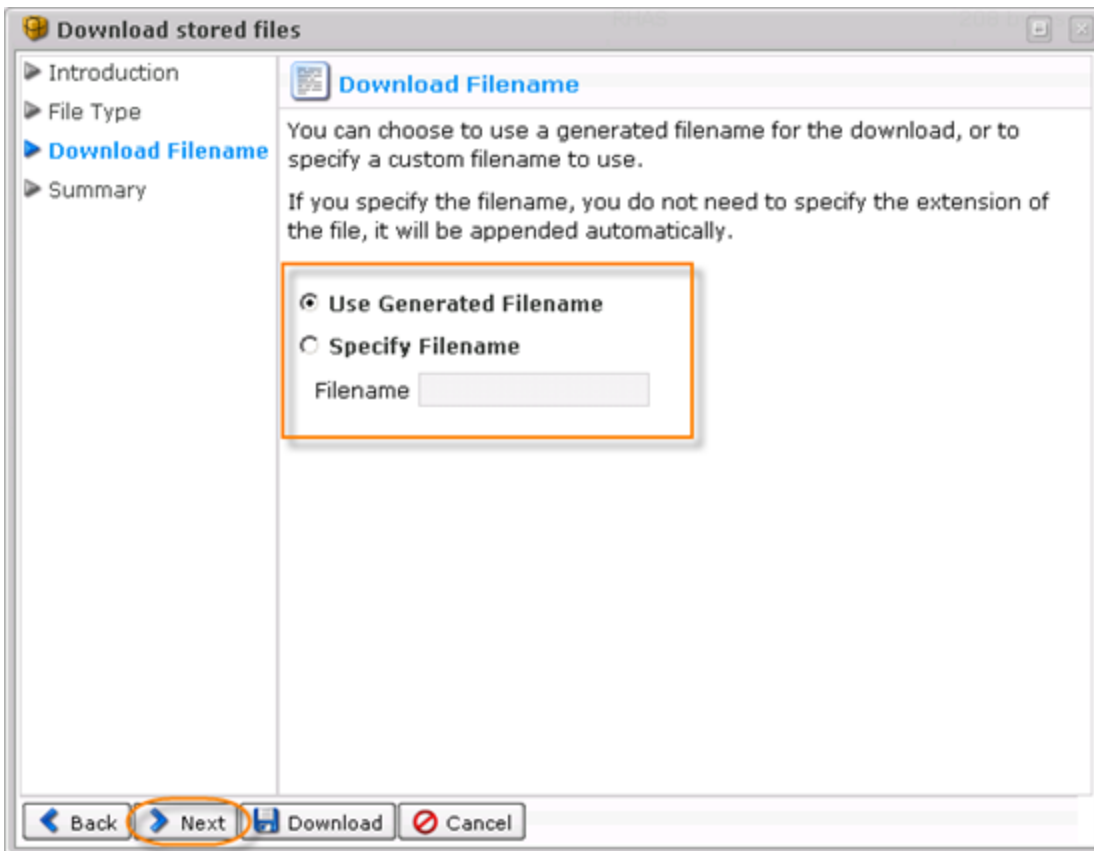
- Use Generated Filename - Select this option to generate the file name automatically. The name will be in the following format:

cdp-data-[date of Recovery Point creation]-[time of Recovery Point creation]

Example: cdp-data-2011-07-09-03-00-06.tar.gz

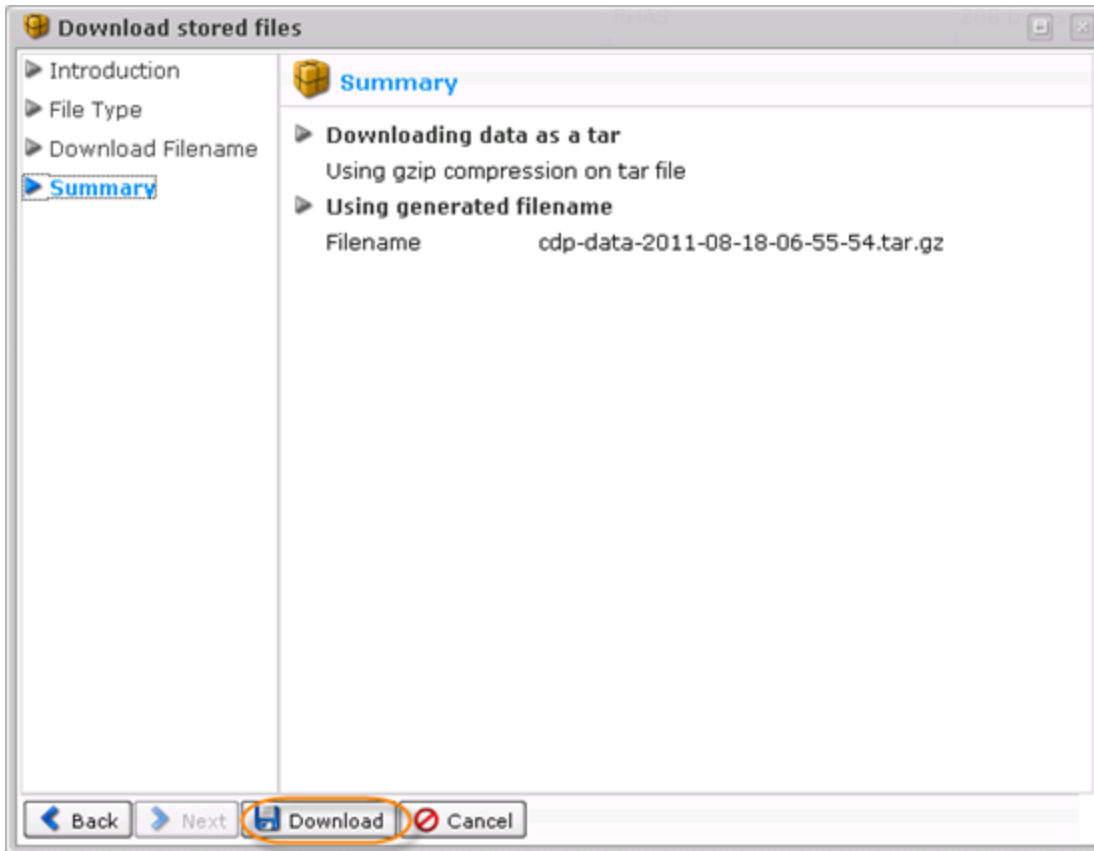
- Specify Filename - Select this option to input custom file name.

i Note
You do not need to specify the extension of the file. It will be appended automatically.



Click "Next."

6. On the last "Summary" screen, the settings you have selected are listed.



Click "Download" to obtain the archive.