

Using Standard Edition Dashboard

Follow the instructions below to access the Dashboard in CDP.

1. The Dashboard page typically loads automatically after you log in. See [Logging in to CDP Server](#).

Continuous Data Protection 3.0 - Standard Edition

admin Logout Help

Dashboard

Getting Started

Continuous Data Protection in 4 Easy Steps

Create a Disk Safe Define a Data Protection Policy Wait for Initial Replica Enjoy CDP Replication

Policies

OK Policies are OK

Server Disk Usage

Disk	Used	Free Space	Capacity
C:\	23.3 GB	74.3 GB	97.7 GB

Last 10 Finished Replications

State	Type	Name	Start Time	Detail

Last 10 Tasks With Alerts

State	Type	Name	Start Time	Detail

Dashboard

Disk Safes

Policy

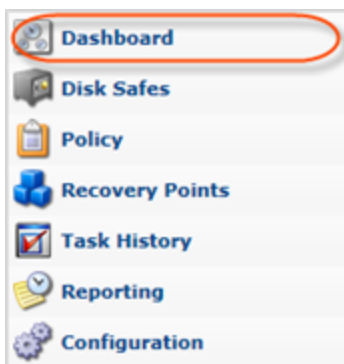
Recovery Points

Task History

Reporting

Configuration

To access the Dashboard from any other screen, click on "Dashboard" in the main menu.



Tip

You can access the Dashboard by typing the Server IP, the root folder in the browser address bar. For example: <http://10.61.200.31/>.

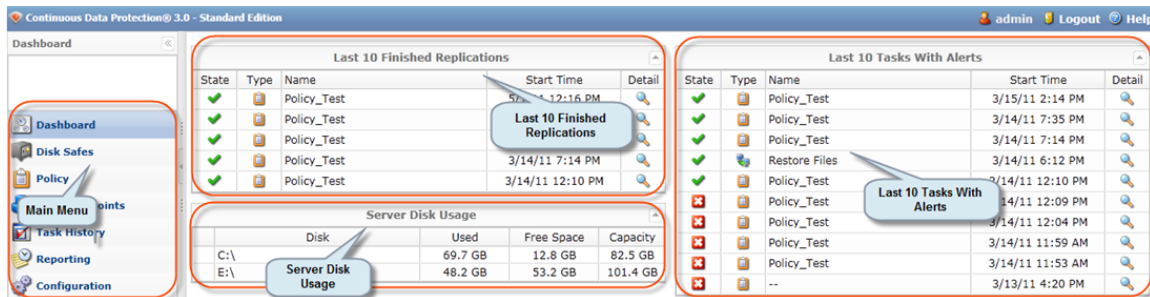


After you log in to CDP for the first time after installation, you see that the "Dashboard" has an additional "Getting Started" area.



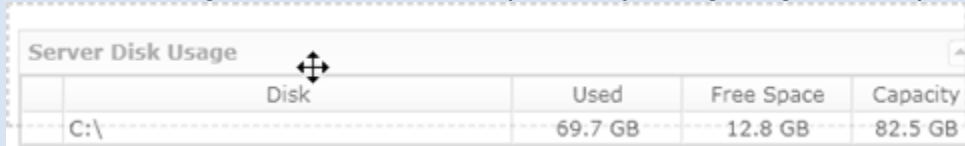
The Dashboard can contain the following panes:

- Getting Started Area - Provides access to the major functions of the system.
- Last 10 Finished Replications - Provides details of ten recently finished Policies. You can access their summary.
- Last 10 Tasks with Alerts - Provides details of ten recently finished Tasks with alerts. You can see the alerts in detail.
- Server Disk Usage - Provides information about used and free space, and capacity for each Device.



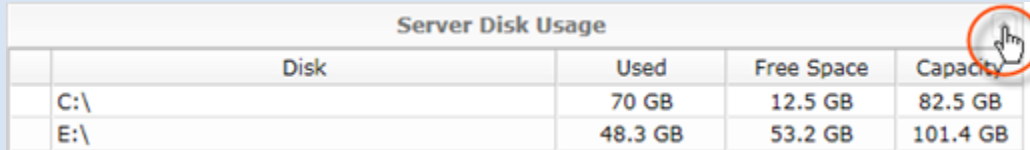
Tips

- You can change the location of the panes by using drag-and-drop.



Server Disk Usage			
Disk	Used	Free Space	Capacity
C:\	69.7 GB	12.8 GB	82.5 GB

- You can expand/collapse the pane details by clicking on the arrow button in the top right corner of the header of the pane.



Server Disk Usage			
Disk	Used	Free Space	Capacity
C:\	70 GB	12.5 GB	82.5 GB
E:\	48.3 GB	53.2 GB	101.4 GB

[Getting Started Area](#) | [Last 10 Finished Replications](#) | [Last 10 Tasks with Alerts](#) | [Server Disk Usage](#)

Getting Started Area

For beginners, the links to the main actions are displayed in the Dashboard:

- [Create a Disk Safe](#) - See [Creating Disk Safes](#).
- [Define a Data Protection Policy](#) - See [Creating Policies](#).
- [Wait for Initial Replica](#) - See [Accessing Task History](#).
- [Enjoy CDP Replication](#)

After clicking on the link, you will go directly to the appropriate screen.

Last 10 Finished Replications

The table displays information about 10 recently finished Policies. The table includes the following columns:

- **State** - Graphically indicates the current State of the Task. The state can change over time. Move the mouse pointer over it to display a yellow tool tip that informs you of what the icon indicates. A Task can be in one (1) of the following states:
 - **Queued** - The Task is waiting and will run as soon as more resources are available.
 - **Running** - The Task is currently in progress.
 - **Finished** - The Task has completed successfully and without errors.
 - **Error** - The Task has completed with one or more errors.

- Canceled - The Task has been terminated by the User on the "Reporting" page while running.
- Duplicate - There is a duplicate scheduled Task in the queue.
- Type - Graphically indicates Task type: Restore Files, Merge Recovery Points or Data Protection Policy. Move the mouse pointer over it to display a yellow tool tip that informs you of what the icon indicates.
- Name - For Data Protection Policies, the name specified in the Policy properties is shown in this column.
- Start Time - Date and time when a Task was started.
- Detail - By clicking on the icon located in the "Detail" column, you can open the "Summary" window for the Task. The same information as shown on the "Summary" tab in the "Reporting" screen is provided in the opened window. See descriptions in [Viewing Task Summary](#).

Last 10 Finished Replications				
State	Type	Name	Start Time	Detail
		Policy 2	10/26/09 7:00 AM	
		Policy 2	10/25/09 7:00 AM	
		Policy 1	10/24/09 10:28 PM	
		Policy 1	10/23/09 4:41 PM	

Last 10 Tasks with Alerts


The table displays information about 10 recent Tasks with alerts. Columns are the same as in "Last 10 Finished Replications."

By clicking on the icon located in the "Detail" column, you can open the "Alerts" window for the Task. The same information as shown on the "Alerts" tab in the "Reporting" screen is provided in the opened window. See descriptions in [Viewing Alerts](#).

Last 10 Tasks With Alerts				
State	Type	Name	Start Time	Detail
		Policy 2	11/29/09 12:00 AM	
		Policy 2	11/28/09 12:00 AM	
		Policy 2	11/27/09 12:00 AM	
		Policy 2	11/26/09 12:00 AM	
		Policy 2	11/25/09 12:00 AM	
		Policy 2	11/24/09 12:00 AM	
		Policy 2	11/23/09 12:00 AM	
		Policy 2	11/22/09 12:00 AM	
		Policy 2	11/21/09 12:00 AM	
			11/20/09 11:49 AM	

Server Disk Usage

- Alert - Move the mouse pointer over it to display a yellow tool tip that shows you the message. For example, "Disk space limit has been reached".



Server Disk Usage				
	Disk	Used	Free Space	Capacity
	C:\	27,6 GB	1,7 GB	29,3 GB
	D:\	65,1 GB	32,6 GB	97,7 GB

Disk space limit has been reached

- Disk - Disk name. See [Devices](#).
- Used - Disk Resources occupied by data, in megabytes and in gigabytes.
- Free Space - Disk Resources not occupied by data, in megabytes and in gigabytes.
- Capacity - The capacity of a Disk to hold and retain data.

Server Disk Usage				
	Disk	Used	Free Space	Capacity
	C:\	69.7 GB	12.8 GB	82.5 GB
	E:\	48.2 GB	53.2 GB	101.4 GB

If Disk Usage reaches a warn level, the Server Disk Usage area changes its color. See more in [Configuring Server Options](#) for configuration of the option "Warn When Disk Usage Exceeds".

Server Disk Usage				
	Disk	Used	Free Space	Capacity
	/dev/sdb1	18.3 GB	99.8 GB	118.1 GB
	/dev/mapper/VolGr	8.5 GB	29.1 GB	37.7 GB

Disk space is low