

Error - Could Not Create Disk Safe Directory

Symptom

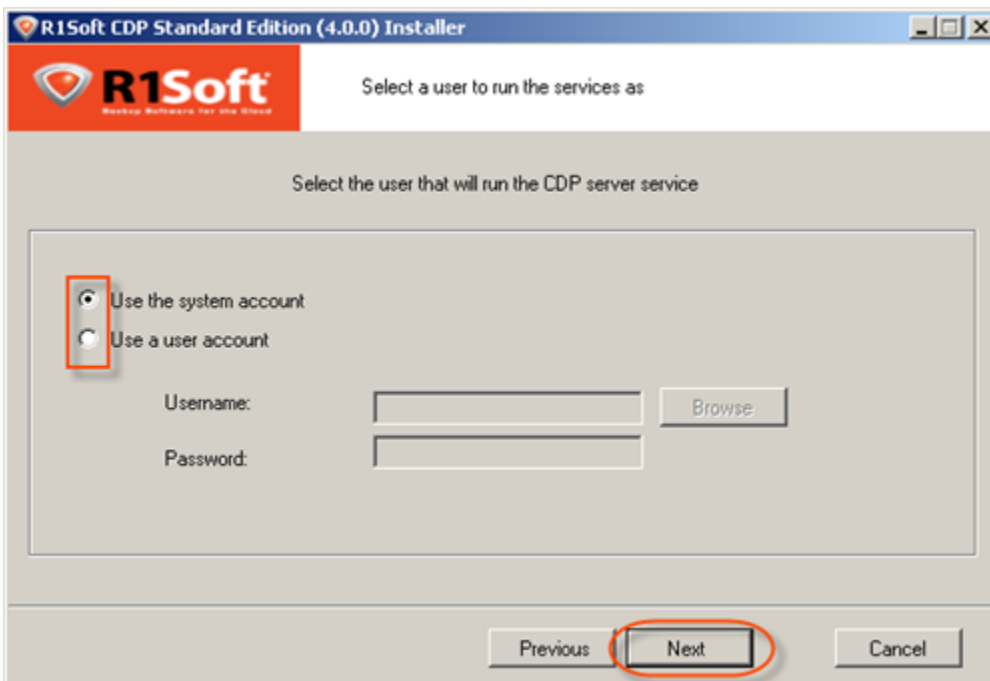
The CDP Server can not create a directory:

Could not create disk safe directory at \\10.19.10.201\rpiabk1\cdp

Cause

Typically, this issue is caused by the CDP Server Windows Service running as Local System User by default. Local System User likely does not have permission to write to the network share.

During installation, the installer requests you to select a user to run the CDP Server as. You have to specify a domain user (or user that has permission to the share).



Resolution

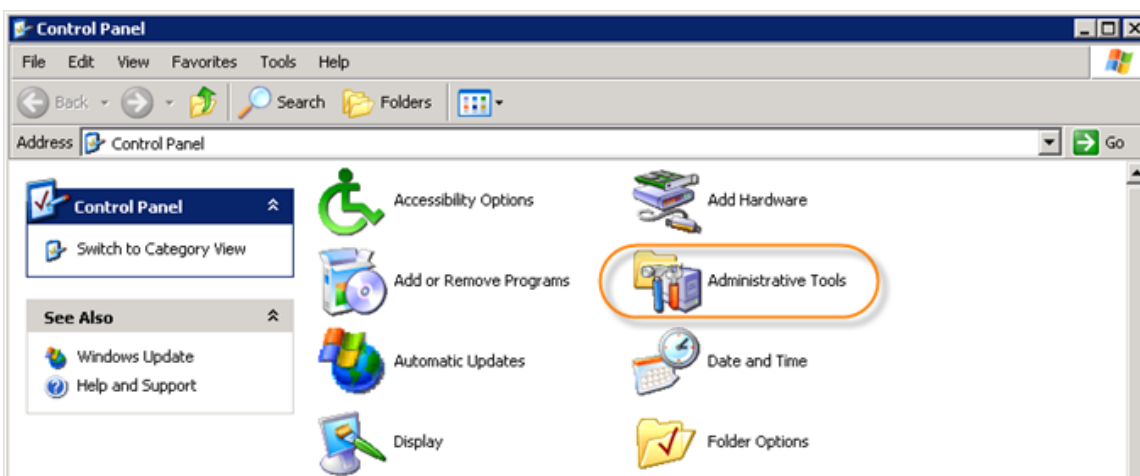
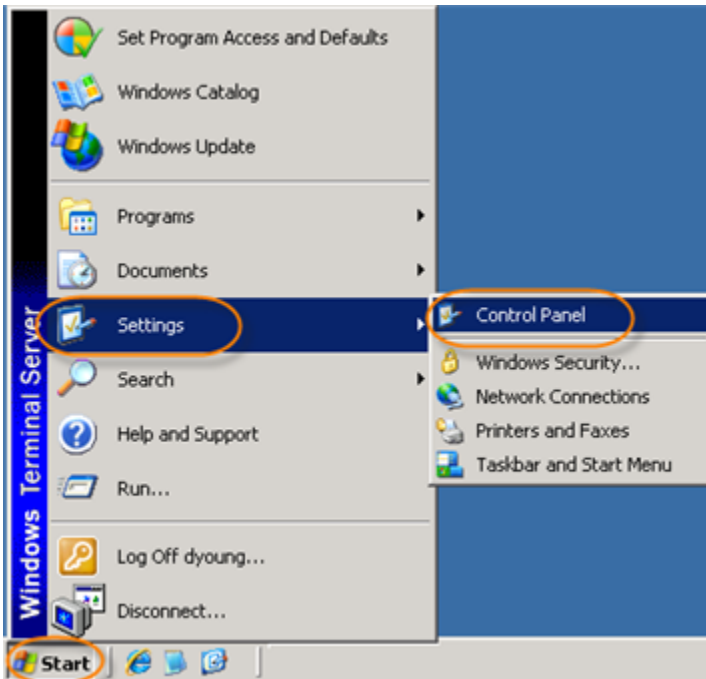
To change the user to run the CDP Server as, follow the instructions below.

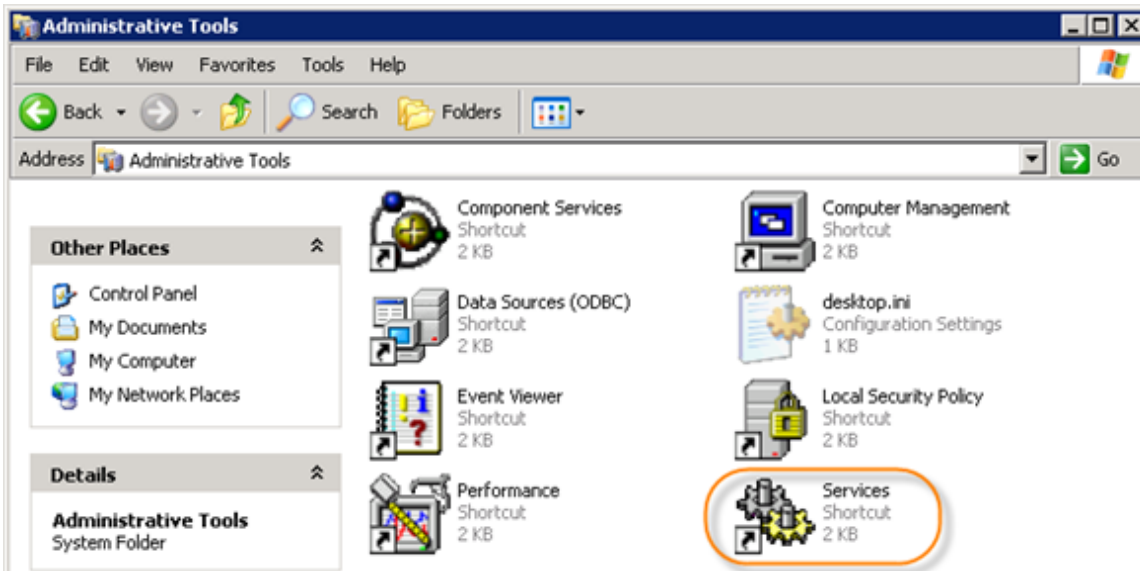
**Tip**

You can do the same operation using the Windows Configuration Utility. See [Configuring CDP Server "Run Service As" Account \(Continuous Data Protection 3.0 Documentation\)](#).

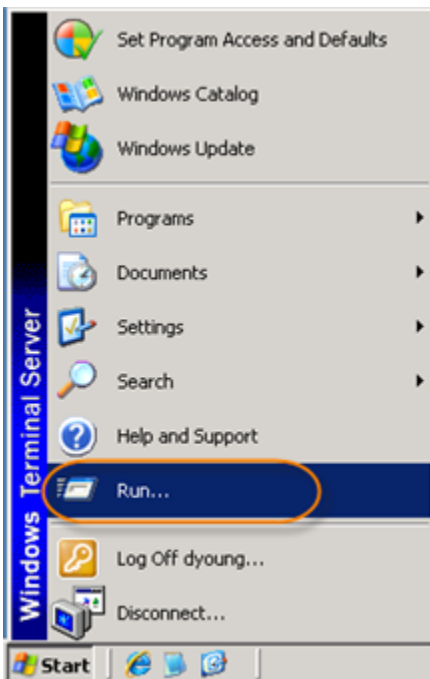
1. Access the Windows Services window.

You can select Start > Control Panel > Administrative Tools > Services.

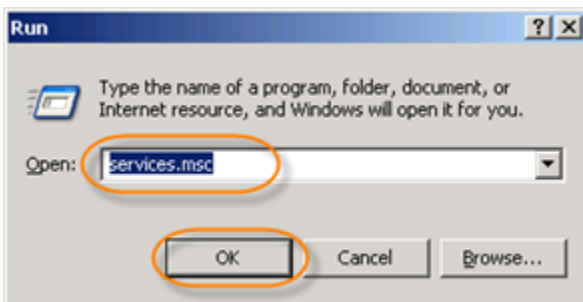




Or alternatively, you can select Start > Run...

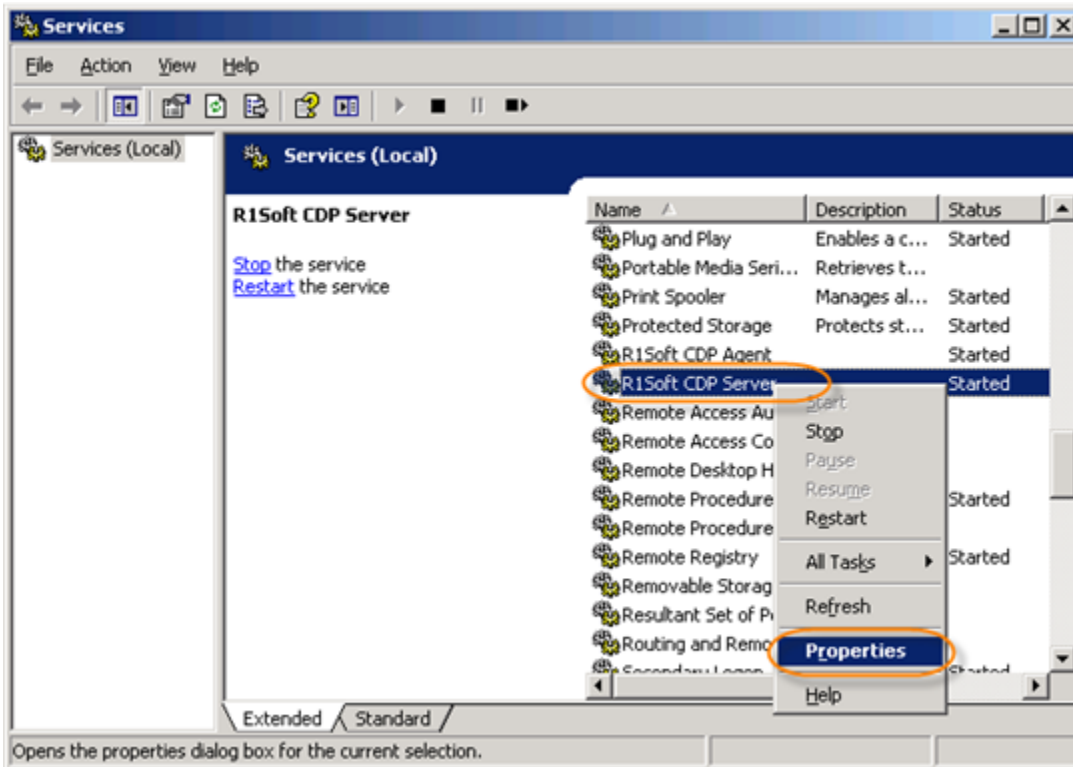


And then type "services.msc" and click "Open."

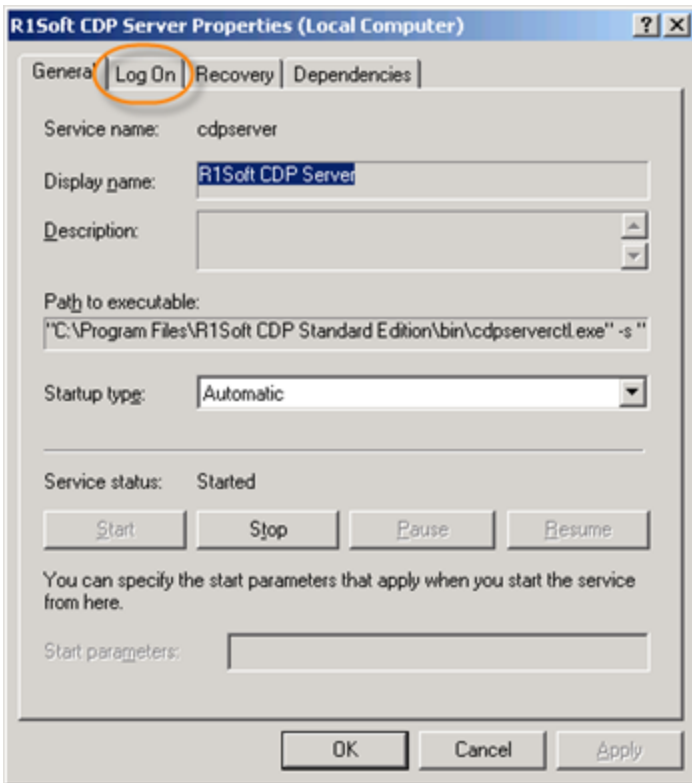


2. Change the CDP Server service to log on as an account that has permission to access the network share.

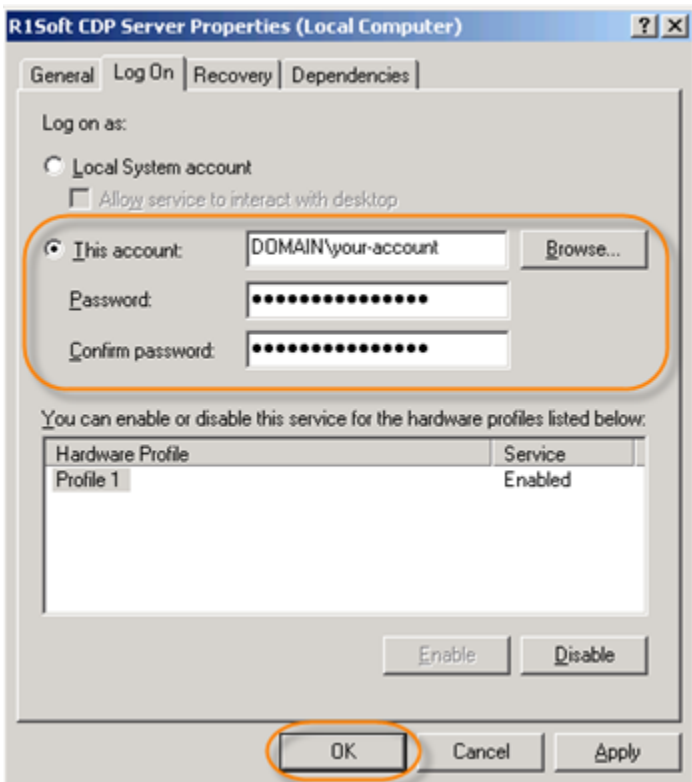
First, find the "R1Soft CDP Server" item in the "Services" application. Right-click it and select the "Properties" item from the context menu.



In the "R1Soft CDP Server Properties" window, switch to the "Log On" tab.

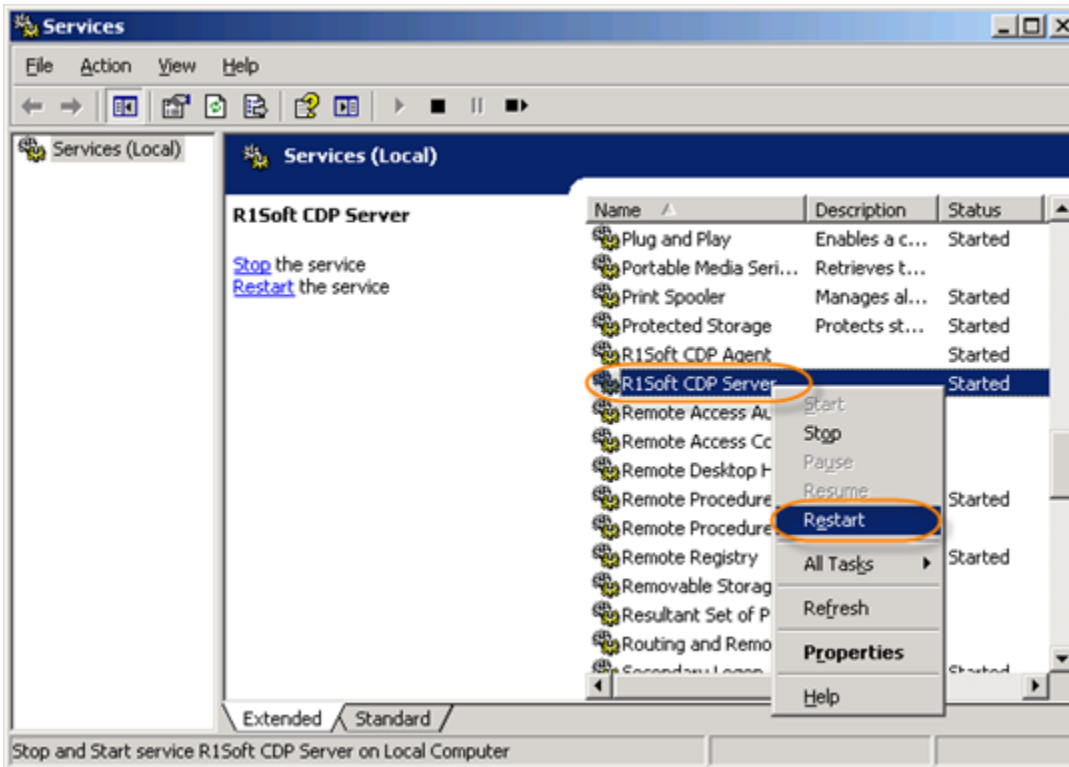


In the "Log On" window, select a suitable user account. Enter the appropriate Password and click "OK."



3. Restart the CDP Server service.

Right-click the "R1Soft CDP Server" service and select "Restart" from the context menu.



Related Articles

Page: BMR of a Citrix Xen 6.0 paravirtualized VM (Knowledge Base) Labels: bare-metal_restore_3, disk_safe_3, partition_3, file_system_3, bmr_3, citrix_3, xen_3, pv_3, hvm_3

Page: Setting Permissions on SSHFS File System (Knowledge Base) Labels: disk_safe_3, troubleshoot_3

Page: Assigning Backups to a Different Disk Safe (Knowledge Base) Labels: disk_safe_3

Page: Error - Caused by Java SQL SQLException Database Is Locked (Knowledge Base) Labels: nfs_3, disk_safe_3, troubleshoot_3

Page: Error - Could Not Create Disk Safe Directory (Knowledge Base) Labels: disk_safe_3, troubleshoot_3, cdp_server_3

Page: Error - Location Does Not Contain a Valid Disk Safe (Knowledge Base) Labels: disk_safe_3, troubleshoot_3

Page: Using Two Policies per Agent (Knowledge Base) Labels: disk_safe_3, policy_3, agent_3, troubleshoot_3, volumes_3

Page: Error - Linux cdp agent fails with "Floating Point Exception" (Knowledge Base) Labels: nfs_3, disk_safe_3, troubleshoot_3

Page: Error - InnoDB Restore Fails to Prepare MySQL Instance (Knowledge Base) Labels:

[mysql_3](#), [innodb_3](#), [apparmor_3](#), [teardown_3](#), [file_restore_3](#), [troubleshoot_3](#)

Page: [Setting Permissions on SSHFS File System \(Knowledge Base\)](#) Labels: [disk_safe_3](#), [troubleshoot_3](#)

Page: [Error - Restore with Overwrite Files on Drops the Network \(Knowledge Base\)](#) Labels: [file_restore_3](#), [troubleshoot_3](#)

Page: [Error - AGENT Unable to Set Default Name Check Option \(Knowledge Base\)](#) Labels: [randmmap_3](#), [troubleshoot_3](#), [agent_3](#)

Page: [Error - Caused by Java SQL SQLException Database Is Locked \(Knowledge Base\)](#) Labels: [nfs_3](#), [disk_safe_3](#), [troubleshoot_3](#)

Page: [Error - Could Not Create Disk Safe Directory \(Knowledge Base\)](#) Labels: [disk_safe_3](#), [troubleshoot_3](#), [cdp_server_3](#)

Page: [Error - Could Not Start Snapshot \(Knowledge Base\)](#) Labels: [troubleshoot_3](#), [agent_3](#)

Page: [Error - Java Heap Space out of Memory \(Knowledge Base\)](#) Labels: [troubleshoot_3](#)

Page: [Error - Location Does Not Contain a Valid Disk Safe \(Knowledge Base\)](#) Labels: [disk_safe_3](#), [troubleshoot_3](#)

Page: [Using Two Policies per Agent \(Knowledge Base\)](#) Labels: [disk_safe_3](#), [policy_3](#), [agent_3](#), [troubleshoot_3](#), [volumes_3](#)

Page: [Error - Linux cdp agent fails with "Floating Point Exception" \(Knowledge Base\)](#) Labels: [nfs_3](#), [disk_safe_3](#), [troubleshoot_3](#)

Page: [Error - Could Not Create Disk Safe Directory \(Knowledge Base\)](#) Labels: [disk_safe_3](#), [troubleshoot_3](#), [cdp_server_3](#)
