

Accessing CDP Configuration Utility

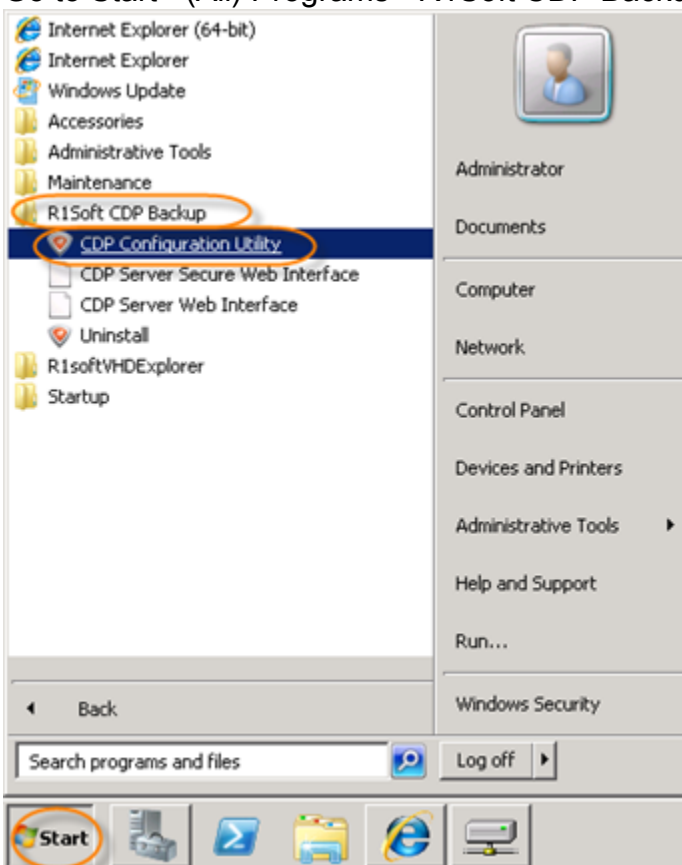
Follow the instructions below to access the [Windows CDP Configuration Utility](#).



Note

For Enterprise Edition, CDP Configuration Utility is available on the machine with CDP Server installed. On the machine where CDP Agent is installed, use [Windows CDP Agent Configuration Utility](#).

Go to Start > (All) Programs > R1Soft CDP Backup > CDP Configuration Utility.



The Configuration Utility will start.

The image shows a screenshot of the 'CDP Configuration Utility' application window. The window has a blue title bar with the text 'CDP Configuration Utility' and standard window control buttons (minimize, maximize, close). Below the title bar is a menu bar with 'File', 'Services', and 'Help'. A tabbed interface is visible with four tabs: 'Credentials', 'Server Configuration', 'Agent Configuration', and 'Set Heap Size'. The 'Agent Configuration' tab is currently selected. Below the tabs, there is a text instruction: 'Resets a CDP user. Complete the fields and click Apply to save the changes. Once done, you will have to restart the CDP Server service for your changes to take effect.' The main area of the dialog contains three input fields: 'Username:', 'Password:', and 'Verify:', each followed by a text box. At the bottom right of the dialog, there are two buttons: 'Apply' and 'Cancel'.