

Accessing Enterprise Edition Web Interface

With CDP properly installed, you can access the administration Interface by opening a Web browser and typing in the Host Name or IP address of the CDP Server.

[Accessing CDP from Local Machine](#) | [Accessing CDP from Internet/LAN](#) | [Using Secure Connection](#) | [Logging in to the CDP Server](#)

Accessing CDP from Local Machine

You can connect to the CDP Server Web Interface from the computer where it is installed. Type the following address in a browser address bar:

`http://localhost`



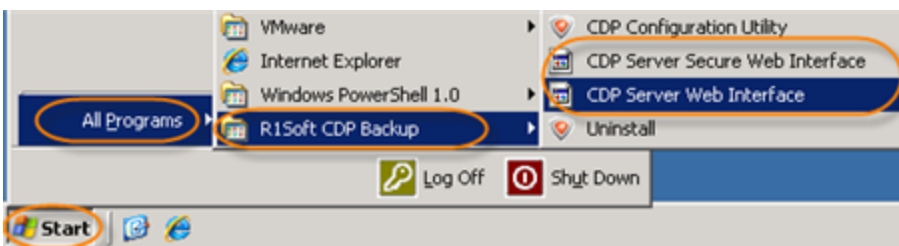
You can also access the CDP Server Web Interface from the Start Menu.

For example, Start > Programs/All Programs > R1Soft CDP Backup > CDP Server Secure Web Interface or CDP Server Web Interface.



Notice

The Start menu folder can be different if the User has chosen another name during the CDP installation.



Accessing CDP from Internet/LAN

To connect to the CDP Server Web Interface from any computer connected to Internet/LAN, follow the instructions below.

In the address bar of the browser, type the IP address (Host Name) of the CDP Server. Typically, it is same as the IP address of the computer. Example:

`http://178.120.122.126`



Tip

In Windows, you can find out the IP address of the computer by following these instructions. Click "Start," select "Run" (in some versions), type "cmd," type "ipconfig," and press <Enter>. IP address of your PC will be displayed among the other configuration parameters.



Tip

In Linux, type the "ifconfig" command to find out the IP address of the machine.

Using Secure Connection

You can use the following connection types to CDP Web Interface:

- CDP Server Web Interface - Uses HTTP protocol.
- CDP Server Secure Web Interface - Uses encrypted (SSL) HTTPS connections.

CDP Server Secure Web Interface uses encrypted (SSL) HTTPS connections. To access the CDP Server securely, add "https://" before the IP address (Host Name) of the CDP Server. See also: [Running CDP over SSL \(HTTPS\)](#).



CDP Server Web Interface uses HTTP protocol.



Note

By default, HTTP and SSL are enabled. You can configure these settings in [Configuration > Web Server Options](#). See [Configuring Web Server Options](#).

Logging in to the CDP Server

Once you have established a connection to the CDP Server, you will be prompted for a Username and Password.



The screenshot shows the login dialog box for Continuous Data Protection 3.0 - Enterprise Edition. The dialog has a title bar with the product name and a Help icon. The main area contains a form with two input fields: Username and Password. Below the fields is a Login button with a key icon. The Copyright notice at the bottom reads: Copyright 2006-2010 R1Soft and BBS Technologies Inc.

Type in "admin" as the Username and type in the Password you specified during installation. Click on "Login."



The screenshot shows the login dialog box with the Username field containing the text "admin" and the Password field containing a series of dots. The Login button is highlighted with an orange oval. The Copyright notice at the bottom reads: Copyright 2006-2010 R1Soft and BBS Technologies Inc.

Proceed to the next step: [Activating CDP Enterprise Edition](#).